

REF.: 1.92 ACRES; G. E. LEHMANN QUALIFIED PERSONAL RESIDENCE TRUST, ET AL, TO ROBERT F. GILBERT, ET AL; WARRANTY DEED; DECEMBER 23, 2005; VOLUME 1495 PAGE 469, OFFICIAL PUBLIC RECORDS

REF.: 0.37 ACRE & 0.68 ACRE; GORDON H. MONROE, TRUSTEE, ET AL, TO SECOND GENERATION INVESTMENTS; WARRANTY DEED WITH VENDOR'S LIEN; FEBRUARY 14, 2007; VOLUME 1588 PAGE 52, OFFICIAL PUBLIC RECORDS

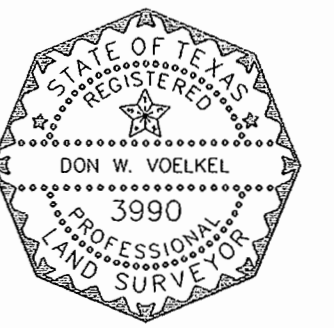
I hereby certify that this plot and accompanying field notes description are accurate representations of the property shown and described hereon as determined by a survey made on the ground under my direction and supervision, and that all property corners are marked as shown.
(Bearing basis = True north based on GPS observations)

Date surveyed: April 27 - June 13, 2007
August 5, 2008

Dated this 15th day of August, 2008

Don W. Voelkel

Don W. Voelkel
Registered Professional Land Surveyor No. 3990



SUBJECT TRACT DEED REFERENCES:

REF.: 8.9 ACRES; G. E. LEHMANN, ET AL, TO LEHMANN PARTNERS, LTD.; WARRANTY DEED; SEPTEMBER 12, 1989; VOLUME 528 PAGE 142, REAL PROPERTY RECORDS

REF.: 0.06 ACRE; G. E. LEHMANN, ET AL, TO LEHMANN PARTNERS, LTD.; WARRANTY DEED; SEPTEMBER 12, 1989; VOLUME 528 PAGE 154, REAL PROPERTY RECORDS

REF.: 11.1 ACRES; G. E. LEHMANN, ET AL, TO LEHMANN PARTNERS, LTD.; WARRANTY DEED; SEPTEMBER 12, 1989; VOLUME 528 PAGE 172, REAL PROPERTY RECORDS

REF.: 4.7 ACRES AS EXHIBIT "E"; G. E. LEHMANN, ET AL, TO LEHMANN PARTNERS, LTD.; WARRANTY DEED; SEPTEMBER 12, 1989; VOLUME 528 PAGE 181, REAL PROPERTY RECORDS

REF.: 4.2 ACRES; G. E. LEHMANN, ET AL, TO LEHMANN PARTNERS, LTD.; WARRANTY DEED; SEPTEMBER 12, 1989; VOLUME 528 PAGE 223, REAL PROPERTY RECORDS

REF.: 2.5 ACRES AND 3.51 ACRES; MONROE PARTNERS, LTD, TO ENERGY/LAND INC.; GENERAL WARRANTY DEED; JANUARY 19, 2007; VOLUME 1580 PAGE 54, OFFICIAL PUBLIC RECORDS

REF.: 13.1 ACRES; SECOND GENERATION INVESTMENTS TO ENERGY/LAND INC.; GENERAL WARRANTY DEED; MARCH 30, 2007; VOLUME 1594 PAGE 362, OFFICIAL PUBLIC RECORDS

REF.: 0.61 ACRE; MICHAEL J. MYERS, ET AL, TO MARION L. REDMON; WARRANTY DEED WITH VENDOR'S LIEN; OCTOBER 6, 2005; VOLUME 1474 PAGE 50, REAL PROPERTY RECORDS

REF.: 1.00 ACRE; EVELYN S. GRAHAM TO EVELYN S. GRAHAM, TRUSTEE; WARRANTY DEED; NOVEMBER 13, 2006; VOLUME 1577 PAGE 145, OFFICIAL PUBLIC RECORDS

REF.: 0.66 ACRE; MARK T. COWDEN, ET UX, TO JAMES M. KURZ, ET UX; WARRANTY DEED WITH VENDOR'S LIEN; SEPTEMBER 15, 1994; VOLUME 765 PAGE 623, REAL PROPERTY RECORDS

REF.: 0.99 ACRE; SCOTT F. MONROE, ET AL, TO CHARLES W. WOLFF; WARRANTY DEED WITH VENDOR'S LIEN; JANUARY 15, 1985; VOLUME 309 PAGE 491, REAL PROPERTY RECORDS

REF.: 24 FT. WIDE ROAD RIGHT-OF-WAY EASEMENT; GORDON H. MONROE, ET AL TO LEHMANN II, LTD.; JULY 6, 1995; VOLUME 807 PAGE 86, REAL PROPERTY RECORDS

REF.: 14.348 ACRES; C. F. BIEDERSTAFF ET UX, TO L.D.B. CORPORATION; WARRANTY DEED; OCTOBER 9, 1978; VOLUME 214 PAGE 342, DEED RECORDS

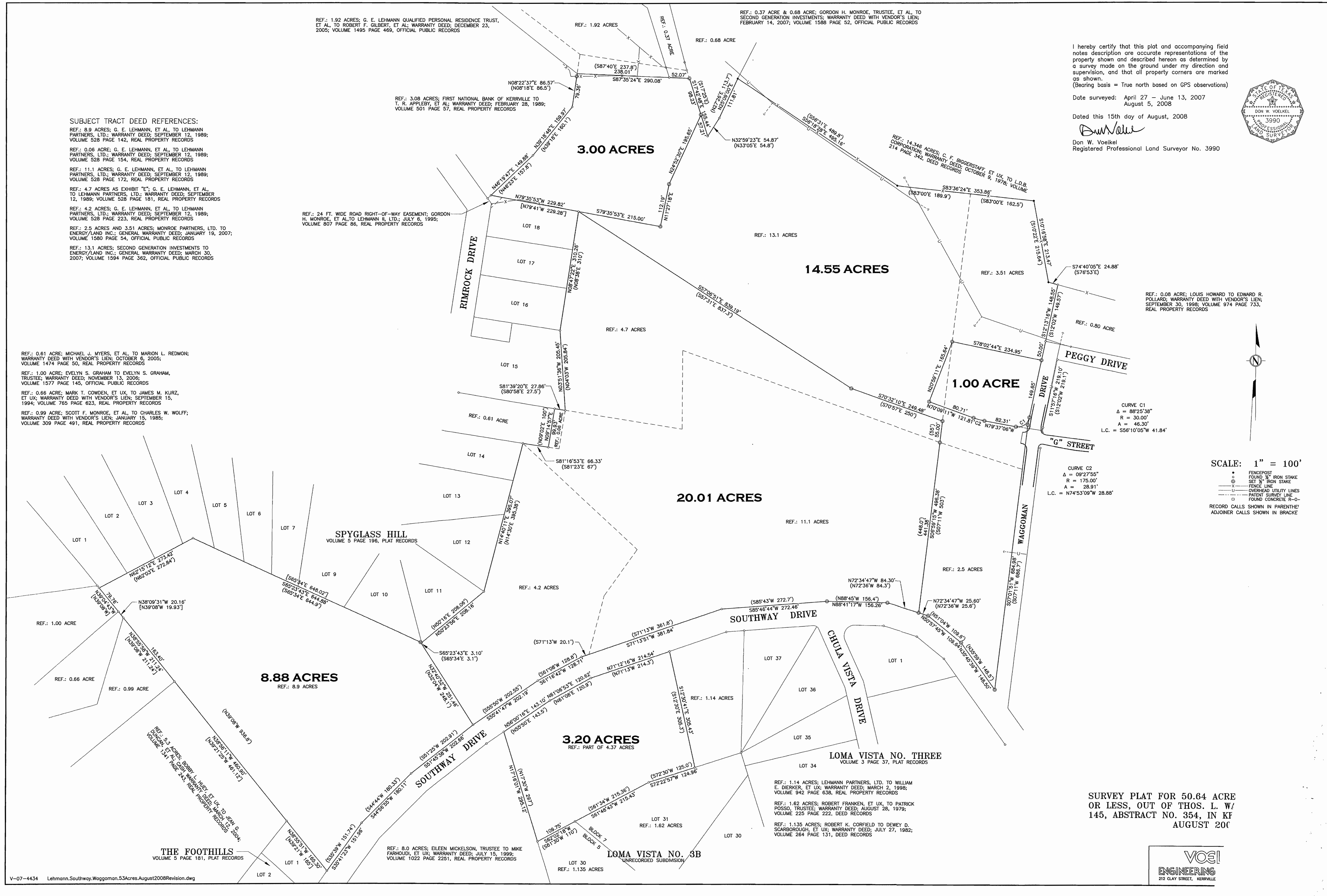
REF.: 0.08 ACRE; LOUIS HOWARD TO EDWARD R. POLLARD; WARRANTY DEED WITH VENDOR'S LIEN; SEPTEMBER 30, 1998; VOLUME 974 PAGE 733, REAL PROPERTY RECORDS

CURVE C1
Δ = 88°25'38"
R = 30.00'
A = 46.30'
L.C. = 556°10'05" 41.84'

CURVE C2
Δ = 09°27'55"
R = 175.00'
A = 28.91'
L.C. = N74°53'09"W 28.88'

SCALE: 1" = 100'

- FENCEPOST
 - FOUND 1/2" IRON STAKE
 - ⊗ SET 1/2" IRON STAKE
 - FENCE LINE
 - OVERHEAD UTILITY LINES
 - PATENT SURVEY LINE
 - FOUND CONCRETE I-P-O
- RECORD CALLS SHOWN IN PARENTHES;
ADJOINER CALLS SHOWN IN BRACKET



SURVEY PLAT FOR 50.64 ACRE OR LESS, OUT OF THOS. L. W/ 145, ABSTRACT NO. 354, IN KF AUGUST 200

