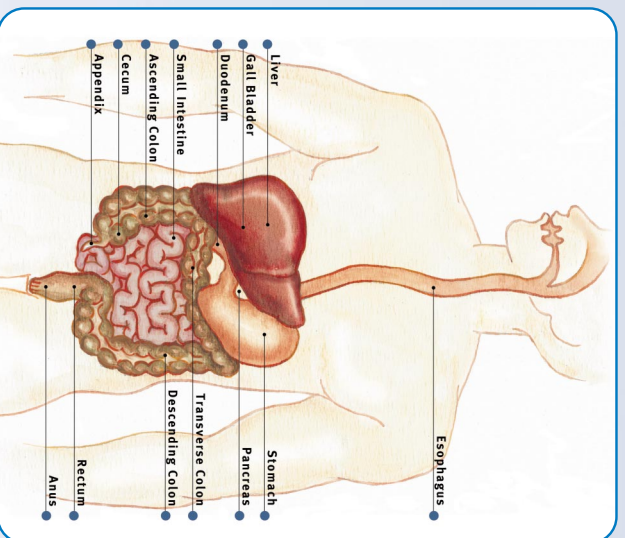


# Small Bowel Capsule Endoscopy



## How Does the Capsule Get Eliminated, and Will I Feel It Come Out?

The capsule is disposable and passes naturally with your bowel movement. You should not feel any pain or discomfort.

## What are the Possible Complications of Capsule Endoscopy?

Although complications may occur, they are rare when doctors who are specially trained and experienced in this procedure perform the test. A potential risk could be retention of the capsule. It is important for you to recognize early signs of possible complications. If you have a fever after the test, trouble swallowing or increasing chest or abdominal pain, tell your doctor immediately.



Your capsule endoscopy is scheduled for:

---

---

---

---

---

---

Additional instructions:

---

---

---

---

---

---



Expanding the scope of GI

[www.givenimaging.com](http://www.givenimaging.com)

Copyright © 2001-2005 Given Imaging Ltd. All Rights Reserved. The GIVEN logo, GIVEN, PILLCAM, the PILLCAM logo, PILLCAM, ORBOWEN and PILLCAM are trademarks or registered trademarks of Given Imaging Ltd. All other trademarks belong to their respective owners.

GMB-0024-01



*Your doctor may determine that a capsule endoscopy of the small bowel is necessary for further evaluation of your condition. Capsule endoscopy with PillCam™ SB video capsule will provide your doctor with pictures of your small intestine. This brochure has been prepared to help you understand the procedure. It includes answers to questions most frequently asked by patients. Please read it carefully.*

*Feel free to ask your doctor or nurse any additional questions before the procedure is scheduled.*

## What is Capsule Endoscopy?

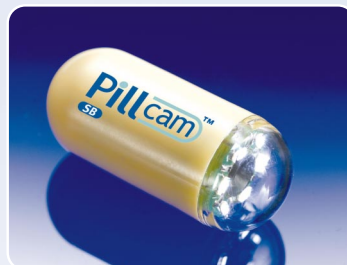
Capsule endoscopy with PillCam™ SB video capsule enables your doctor to examine your entire small intestine. Your doctor will have you ingest a vitamin-pill sized video capsule, which has its own camera and light source. During the 8 hour exam, you are free to move about. While the video capsule travels through your body, it sends images to a data recorder you will wear on a waist belt. Most patients find the test comfortable. Afterwards your doctor will view the images on a video monitor.

## Why is Capsule Endoscopy of the Small Bowel Performed?

Capsule endoscopy helps your doctor determine the cause for recurrent or persistent symptoms such as abdominal pain, diarrhea, bleeding or anemia. In certain chronic gastrointestinal diseases, this method can also help to evaluate the extent to which your small intestine is involved or monitor the effect of therapy. Your doctor might use capsule endoscopy to obtain motility data such as gastric or small bowel passage time.

## How Should I Prepare for the Procedure?

You will receive preparation instructions before the examination. An empty stomach allows optimal viewing conditions, so you should start a liquid diet after lunch the day prior to the examination and have nothing to eat or drink, including water, for approximately ten hours before a small bowel examination. Your doctor will tell you when to start fasting. Tell your doctor in advance about any medications you take as you might need to adjust your usual dose for the examination. Tell your doctor of the presence of a pacemaker

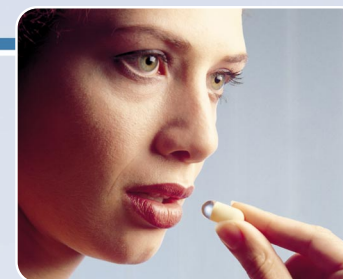


or other implanted electromedical devices, previous abdominal surgery, swallowing problem or previous history of obstructions in the bowel.

## What Can I Expect During Capsule Endoscopy?

The doctor or nurse will prepare you for the examination by applying a sensor array to your abdomen with adhesive sleeves. The capsule endoscope is ingested with water and passes naturally through your digestive tract while transmitting video images to a data recorder worn on a belt for approximately eight hours. You will be able to eat four hours after the capsule ingestion unless your doctor instructs you otherwise.

**IMPORTANT REMINDER:** *This information is intended only to provide general information and not as a definitive basis for diagnosis or treatment in any particular case. It is very important that you consult your doctor about your specific condition.*



## What Happens After Capsule Endoscopy?

At the end of the procedure, you will need to go back to your doctor to return the data recorder and sensor array. The images acquired during your exam will then be downloaded to a workstation for your doctor to review. After ingesting the capsule and until it is excreted, you should not have a Magnetic Resonance Imaging (MRI) examination or be near an MRI machine.

## How Will I Know the Results of the Capsule Endoscopy?

After you return the equipment, your doctor will process the information from the data recorder and will view a color video of the pictures taken from the capsule. After the doctor has looked at this video, you will be contacted with the results.