

Butte County - a Thumbnail Sketch

Butte County, sparsely settled in the 1840s, boomed to prosperity in the 1850s as miners combed the branches and tributaries of the creeks and rivers for gold.

Butte County's varied geography shaped its history. Vast alluvial soils deposited by the Sacramento River (the county's western boundary) provided rich land for major agricultural production.

The rock of the Sierra Nevada Mountain Range was rich in gold. Dozens of small mining communities developed along the branches and tributaries of the huge Feather River drainage. Most are now gone, many beneath the waters of Lake Oroville.

North of the Feather River drainage where the southern end of the volcanic Cascade Mountain Range overlaps the Sierra Nevadas, ancient lava flows created rocky ground and shallow soils with vernal pools for grazing land and, in the mountains, timber stands that supported a substantial lumber industry.

Two major towns emerged:

Oroville ('oro' being the Spanish word for gold) emerged as a major mining town, at one time one of the largest cities in California. It became the seat of County Government.

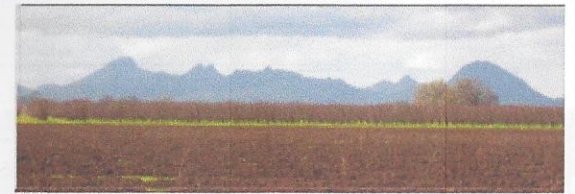
Chico, named for the Mexican land grant 'Rancho Arroyo Chico,' was located on rich farm land near the Sacramento River, and on the route to Oregon. It became a center for agriculture and transportation, including being the starting point of the Humboldt Road, the main route to the mines in Idaho in the 1800's.



Butte County Historical Society
Post Office Box 2195
Oroville, CA 95965-2195

BUTTE COUNTY HISTORICAL SOCIETY

**Your first stop
for local history in Butte County**



**The Sutter Buttes, originally in Butte County,
for which the county was named.**

Butte County Historical Society
P. O. Box 2195
Oroville, CA 95965
(530) 533-9418

Contact us by e-mail:
buttehistory@sbcglobal.net

Or visit our website at:
www.buttecountyhistoricalsociety.org

The Butte County Historical Society is a non-profit volunteer organization devoted to preserving the history of Butte County and sharing it with all.

The Museum and Museum Store

1749 Spencer St., Oroville

Exhibiting a variety of Butte County history topics with artifacts from our collection.

Open Friday, 9 am - noon
& Saturday, 11 am - 3 pm
530-533-9418

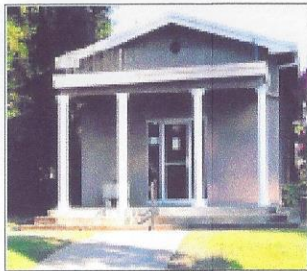


The Archives

2335 Baldwin St., Oroville
(Behind the Museum)

The Archives and Research Center is a rich source of Butte County historical information.

Open Thursday & Friday
9 am - noon
530-533-9418



Oregon City School

2100 Oregon Gulch Rd.
Oregon City, CA

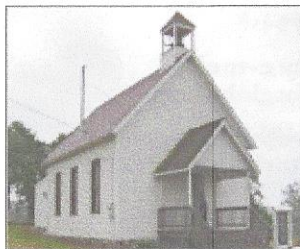
Open Saturday/Sunday
1 pm - 4 pm
530-533-9418



Bangor Church 1882

5730 La Porte Road
Bangor, CA

Open 1st & 3rd Saturday
12 pm - 2 pm
Closed: Dec-Jan / July-Aug
530-679-2112



Available for special occasion rentals



Available for special occasion rentals

The Ehmann Home

1480 Lincoln Blvd., Oroville

An elegant 1911 Craftsman style Bungalow, home of the Ehmanns, the first family of the California Olive Industry.

Open Saturdays, 11 am - 3 pm
530-533-5316

Programs are open to the public

Monthly programs feature a wide variety of Butte County History topics. Programs often include excursions to historic sites.

Publications

Slickens is the monthly BCHS newsletter that will keep you informed about:

- Monthly programs
- Special events
- Other interesting news relating to Butte County history activities.

Diggin's is the BCHS periodical with in-depth articles about the history of our county. Now in its 55th year, it is published quarterly. Indexes are available to help you find the topics or people you are looking for.

Back copies are available for sale at the Museum, the Archives and the Ehmann Home.

BCHS receives no government funding, and exists mostly on memberships and donations from the people and the friends of Butte County.

Please join us in helping preserve the valuable history and historic resources of Butte County.



Membership in BCHS is open to all.

Members receive:

- ◊ Slickens, the monthly newsletter
- ◊ Diggin's, historical quarterly publication
- ◊ 10% discount on museum store purchases
- ◊ Early notice of BCHS activities

BCHS MEMBERSHIP APPLICATION:

Check one:

- Individual (\$30)
- Family (\$40)
- Senior (\$25)
- Senior Family (\$35)
- Supporting (\$50)
- Sustaining (\$100)
- Organizational (\$30)

Name _____

Address _____

City _____ Zip _____

Phone _____

Email _____

Mail, with your check, to: **BCHS**
PO Box 2195
Oroville, CA 95965