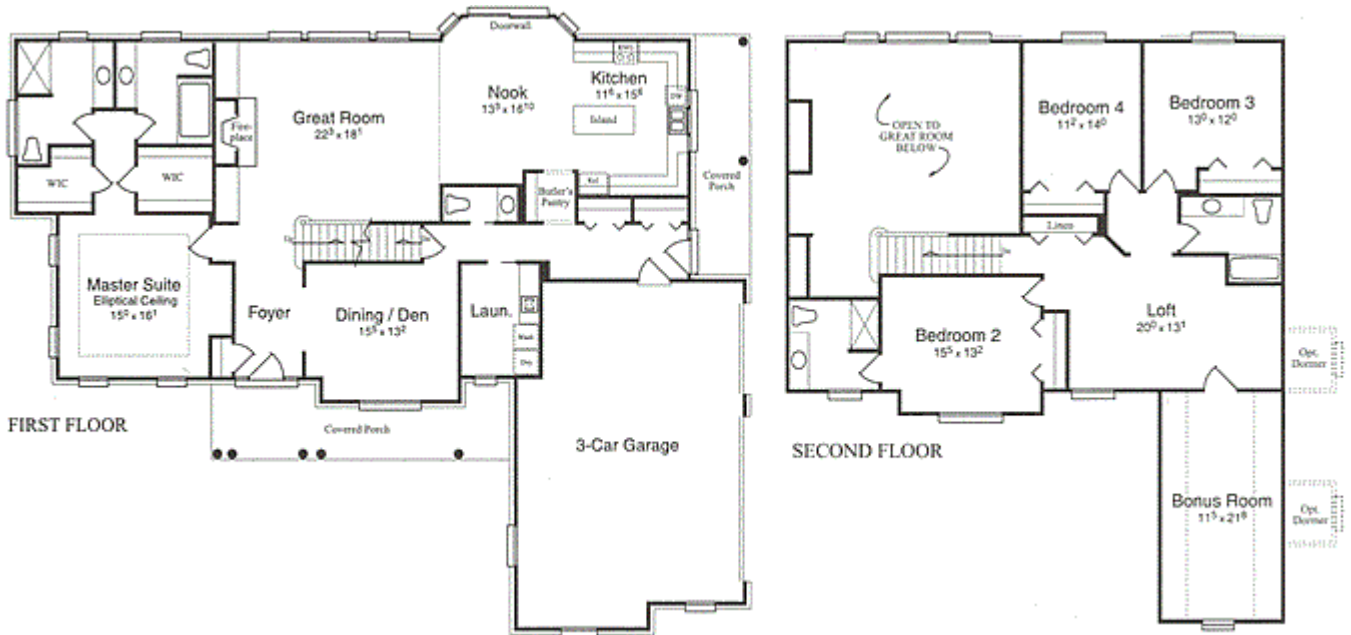


### The Highlander



### Floor Plan





**3,371 SQ. FT.**  
**Split-Level**  
**4-5 Bedrooms**  
**4.5 Baths**  
**3 Car Garage**

### **Features Included in Home**

1. Full brick first floor
2. Stone under front porch and front of garage
3. Louvered shutters front elevation
4. Large covered front porch with round columns
5. Side entry porch with 6" x 6" wrapped boxed posts
6. Three car garage
7. Sidelights each side of front door and side entry door with transom above front door
8. 9 ft. ceilings first floor, elliptical ceiling in master bedroom, and two story ceiling in great room
9. Fireplace
10. Stair railing at main stair
11. Large kitchen with island
12. Unique butler's pantry
13. Luxurious his and hers master bath
14. Large closets throughout
15. Large laundry room
16. Bonus room