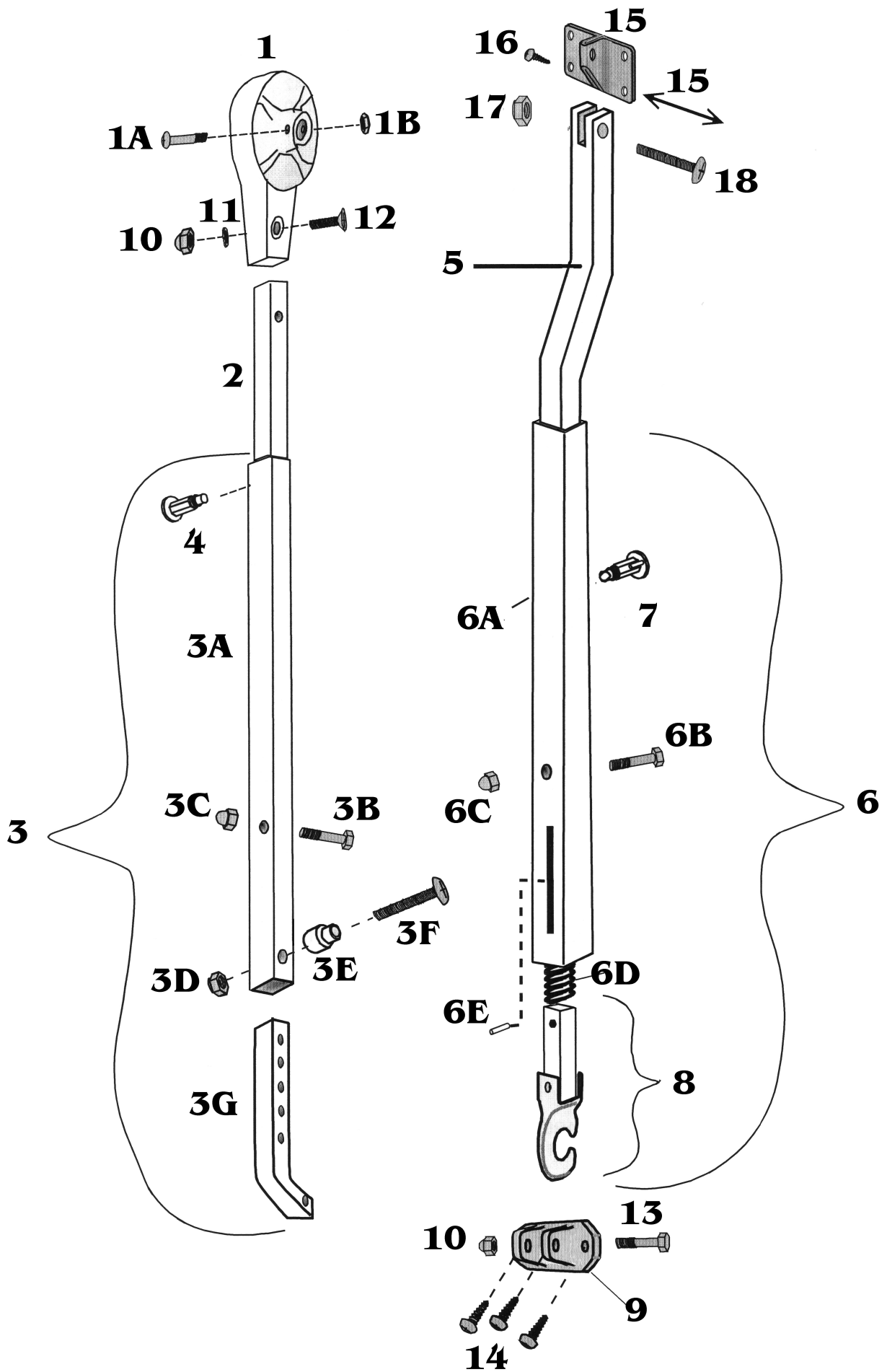


NX Hardware 2001 to Present



Ref #	PART #	NX HARDWARE 2001 to Present
1	215201	HEAD CASTING ASSEMBLY, STANDARD (red logo), includes:
1A	317212	BOLT, 10/32 x 1-1/2", HARDENED STEEL
1B	311070	NUT, 10/32, NYLOCK HEX (stainless)
2	219000-NX(X)	MAIN ARM BAR (stainless)
2	719100-NX(X)	MAIN ARM BAR (aluminum)
3	21620F/R-XXX	BRIGHT FRONT/REAR MAIN ARM TUBE ASSEMBLY, includes:
3	71620F/R-XXX	SATIN FRONT/REAR MAIN ARM TUBE ASSEMBLY, includes:
3A	216200	BRIGHT MAIN ARM TUBE ONLY (or)
3A	716200	SATIN MAIN ARM TUBE ONLY
3B	310040	BOLT, 1/4 - 20 X 1-1/4", HEX HEAD
3C	311020	CAP NUT, 1/4 - 20 (aluminum)
3D	311060	NUT, 1/4 - 20, NYLOCK HEX (stainless)
3E	325215	STEP SPACER, 1/4"
3F	317203	STUD PIN, 1/4 - 20 X 2"
3G	216700-XXX	BRIGHT HINGE BAR (or)
3G	716700-XXX	SATIN HINGE BAR
4	290002	SNAP STUD ASSEMBLY
5	217240-XXX	BRIGHT FRONT/REAR RAFTER ARM BAR
5	717240-XXX	SATIN FRONT/REAR RAFTER ARM BAR
6	218230	BRIGHT RAFTER ARM TUBE ASSEMBLY, includes:
6	718230	SATIN RAFTER ARM TUBE ASSEMBLY, includes:
6A	218220	BRIGHT RAFTER ARM TUBE (or)
6A	718220	SATIN RAFTER ARM TUBE
6B	310030	BOLT, 1/4 - 20 X 1-3/8", HEX HEAD
6C	311020	CAP NUT, 1/4 - 20 (aluminum)
6D	322110	COMPRESSION SPRING, 4-1/4"
6E	313220	GUIDE PIN, 1/8 X 5/8
8	218615	BRIGHT CLAW AND BAR ASSEMBLY WITH PIN (or)
8	718615	SATIN CLAW AND BAR ASSEMBLY WITH PIN
7	290001	RATCHET STUD ASSEMBLY
9	210060	BASE HINGE, RECTANGULAR (floor mount)
15	325352	RAFTER BASE, FLAT
	299503	NX HARDWARE MOUNTING KIT, includes:
10	311010	(4) NUT, 1/4 - 20, ACORN CAP (stainless)
11	312010	(2) LOCKWASHER, 1/4" (stainless)
12	317190	(2) BOLT, 1-3/8", FLAT HEAD
13	310010	(2) BOLT, 1/4 - 20 X 1-5/8", HEX HEAD
14	317040	(6) SCREW, 14 X 2" SHEET METAL (stainless)
16	317030	(8) SCREW, 10 X 3/4", PAN HEAD
17	311060	(2) NUT, 1/4 - 20, NYLOCK HEX (stainless)
18	317202	(2) SCREW, 1/4 - 20 X 1", PAN HEAD SHEET METAL (stainless)
	317010	SCREW, 6 X 1/2, (stainless) (case)
	1HD23F/R-XXX	BRIGHT HALF SET OF HARDWARE, FRONT/REAR
	1HS23F/R-XXX	SATIN HALF SET OF HARDWARE, FRONT/REAR

(XXX) - YEAR, MAKE, MODEL OF COACH REQUIRED

