



Hawaii Association for Play Therapy Newsletter

September 2013

"Play is the highest expression of human development in childhood, for it alone is the free expression of what is in a child's soul." – Friedrich Froebel (founder of the concept of kindergarten)

The spring has flown by and the dog days of summer are almost behind us. It's hard to believe we are entering the last quarter of the 2013! We hope everyone has had a relaxing and enjoyable spring and summer. At our May workshop, 29 participants came to hear HAPT founder Carla Sharp present an introduction to Play Therapy; and last month the HAPT board had a very productive retreat. This month we are looking forward to another wonderful workshop and our annual HAPT conference brochure will be arriving soon!

Review: "An Introduction to the Principles of Efficacy of Play Therapy"

Saturday, May 18, 2013

Presented by: Carla Sharp, APRN, RPT-S, CST-T



Our May Workshop was presented by Carla Sharp. Speaking to an audience comprised mostly of new faces, Carla gave us all an introduction to Play Therapy and for some

of us it was a welcomed refresher to our Play Therapy skills. Our newest attendees were riveted to her words and engaged in many question and answer exchanges. We are so lucky to count among us a presenter whose depth of knowledge and speaking style is so

engaging! Carla also included a live "demonstration" using a volunteer from the audience. This was a great addition to the learning process.

Twenty-nine people attend the workshop and seventeen of the participants were new to HAPT coming either as students or from Catholic Charities or by word of mouth. It was thrilling for the HAPT board members to see so many new faces in attendance. It was also great to see other professionals in the community inspired to learn more about Play Therapy.

HAPT Board Annual Retreat and Planning Meeting

On August 10th the HAPT board met for their annual retreat at the Queen Liliuokalani Children's Center for an enjoyable and productive afternoon.

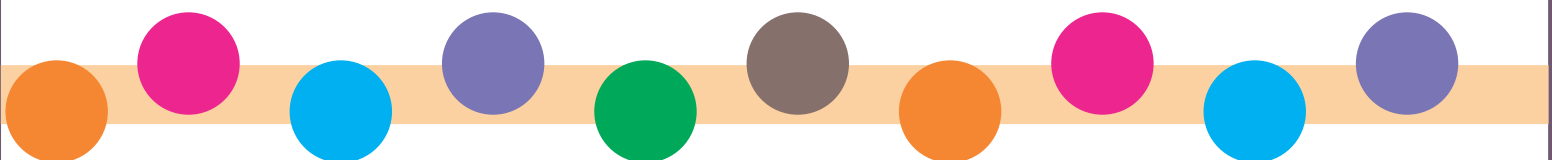
The board addressed many topics during our meeting including: APT standards and requirements, peer networking opportunities, the HAPT website and upcoming workshops and our annual conference.

Time was also spent in breakout sessions reviewing and updating board members duties and responsibilities and new binders were created for each board member. We also created a working yearly- calendar from April to March 31st listing the tasks and deadlines needed for each month.

The HAPT board will be transitioning board members this month and we were fortunate to have two of the new board members join us for part of our retreat. We had the pleasure of meeting Joanne Higashi (incoming Member-At-Large) and Dhira DiBiase (incoming President-Elect). Thank you, for joining us! We are also looking forward to our new treasurer Janessa Jabkowski joining the board in September and working with all the new board members.



(HAPT 2012-2013 Board of Directors)



Mahalo and Goodbyes

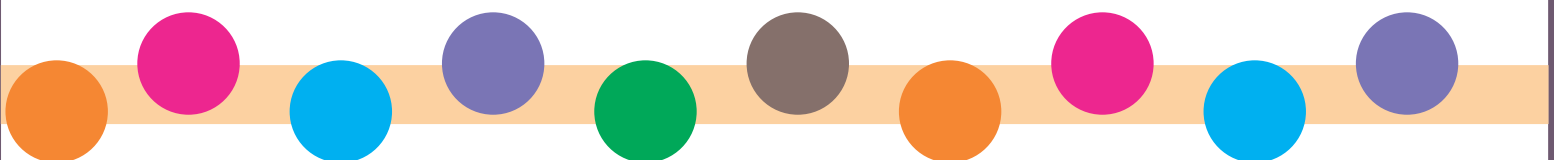
Mahalo to Ann Marten for her three years as our HAPT treasurer. She has faithfully taken care of our finances and supported many of us new members of the board. She has a wealth of knowledge about HAPT and always welcomed us into her home. We will definitely miss the spunk she brings to each meeting.



Mahalo to Gina Eustaquio as our Past President. She has served on the board for three years. She brought a calm and encouraging leadership style to our group. I am especially grateful to her for mentoring me. Gina will continue to be involved with HAPT as the conference chairperson.

Mahalo to Veronica Pahia for coming on board when we needed help filling our member-at-large position. She has been a joy to work with and you can see all her hard work in our newsletters. Veronica will also continue to volunteer with the preparation for annual HAPT conference.

Shelly Tokunaga- May



Friendly Reminders...

September Workshop

Please consider joining us for our September workshop entitled:
"It's All About Relationship: Working with Parents and Children with Multigenerational Attachment Issues through Play, Play Therapy and Guided Parent-Child Interaction"

Date: Saturday, Sept 21, 2013

Time: 9:00 AM- 12:00 PM

Location: Queen's Gate Community Clubhouse

Please see attached flyer to additional details.

Annual HAPT Membership Meeting

We will be holding our annual HAPT membership meeting the same day as our September 21st workshop between 9:00 and 10:00 am. Be sure to attend the meeting to receive updates about our board and upcoming events or simply come to network with other members.

Get the most out of your APT/HAPT membership.

Your APT/HAPT membership provides you with benefits and services that can enrich your play therapy skills and practice. Benefits and services include: Networking opportunities via community listservers and community forums, subscriptions to various publications, access to directories and discounts to annual conferences and membership renewals and even car rental discounts. For a full list of benefits and services please visit the APT website @ <http://www.a4pt.org> under the membership and networking tab.

Believe It or NOT?

HAPT's annual conference is just around the corner; it will be here sooner than you think. Save the date! : February 21 and 22nd 2014. This year's presenter is Scott Rivière, M.S., LPC, RPT-S. Scott is a super presenter and we are excited to bring him to our membership! Be on the lookout in October for the conference brochure.

"Ask an RPT or an RPT/S"

#1. "What role do parents play in Play Therapy?"

Anna W.

"In child centered play therapy the parent's role is to serve as an observer and communicator of the child's behaviors and a reporter of any changes in the environment. It is a fairly passive role, but a more active role is taken during the ancillary parent/therapist sessions when parenting styles and responses are explored and modified."

Mary Welsh, Registered Play Therapist

#2. "What toys or items do children most often use in your play therapy sessions?" Rebecca H.

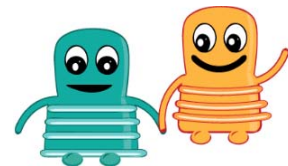
"The bop bag has been a perpetual favorite in my play rooms in the past. The quiet child can explore his less timid side and the aggressive child gets to experience a place where she can develop boundaries and limits in a positive way."

Mary Welsh, Registered Play Therapist

Questions can be submitted to the Member-At-Large at member-at-large@hawaiiplaytherapy.net and will be

"It is easier to build stronger children than to repair broken men."

Frederick Douglas



Looking for Play Therapy Supervisors?

Hawaii Registered Play Therapy Supervisors

Members who are interested in receiving their credentials in play therapy (i.e., Registered Play Therapist), and/or those seeking counsel regarding those sometimes sticky complex cases, here's your opportunity! Below is an updated list of your friendly neighborhood Registered Play Therapist Supervisors who are extending their offers:

Carla Sharp, APRN, RPT-S, STA/ISST - Offers individual supervision by appointment and has held group supervision once a month for 13 years. Currently, group supervision is open to anyone and meets on the first Saturday of each month from 9am to 12pm at her office at 315 Uluniu Street, Kailua, #207. Attendees bring play therapy material and/or videos of their session for support and feedback. She has also created a Play Therapy Training Package which allows one to purchase 100 hours of training and 35 hours of supervision at a discounted rate. You can email her for more information at carla@carlsharp.com.

Margaret Bubon Smith, MA, MFT, RPT-S – Currently the Director of Healthy Start at Child and Family Service on Kauai. Experience with foster care, child abuse, and preschool age children. She can be contacted at mgtbubon@hawaiiantel.net or via phone: 808-332-5200.

Anita Trubitt, LCSW, RPT-S – Private Practice with specialty in divorce/paternity cases where custody and visitation are issues. Supervision or consultation available. Contact through email: trubitt@hawaii.rr.com or by phone: 808-261-2524.

Laura Williams LCSW, RPT-S - Works for CFS in Waimea on the Big Island of Hawaii. Contact: 808-895-0989. Expertise is in attachment and children with autism.

Elizabeth Kong, MA, LSC, LMFT, RPT-S - Currently works as a School Counselor in East Honolulu. Experience working with children with school related issues, anxiety disorders and selective mutism as well as children with physical challenges and families with substance abuse issues and loss. She can be contacted by email at Midget95127@yahoo.com. Available for individual supervision.

Mary Welsh MS NCC MHC RPT-S – Currently working with Military Families as a Consultant, Mary has 18 years of experience in the field of Child and Family Therapy and has spent 9 of those years in private practice. Mary was trained and received her supervision on the mainland and is also a Certified Child Centered Play Therapist through The National Institute For Relationship Enhancement. She feels that it is very important for Play Therapists to have a strong background in Child Centered Play Therapy and looks forward to working with Supervisees interested in strengthening their knowledge and skills in this area. Mary can be reached at mlwelsh@comcast.net or at 703-919-1881. She can be available for distance supervision and will assist the Supervisee in creating and utilizing videotape sessions as the best way to learn strong skills.

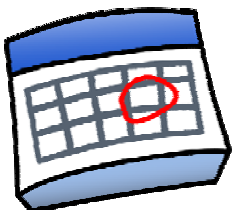
Mark your calendar!

HAPT September Meeting / Workshop

**Working with Parents and Children with Multigenerational Attachment Issues
through Play, Play Therapy and Guided Parent-Child Interaction**

September 21, 2013 - 9:00am to 1:00pm

Queen's Gate Community Clubhouse



NEWSLETTER CONTRIBUTIONS WELCOMED: As always, we welcome contributions to the newsletter: review of play therapy literature tips or techniques you have found helpful; resources; upcoming trainings related to play therapy; letters to the editor, etc Please contact the HAPT Member-at-Large, at member-at-large@hawaiiplaytherapy.net.

REMINDERS:

If you received this edition of the newsletter by regular mail and prefer to receive it by email, please send your name and email address to member-at-large@hawaiiplaytherapy.net. To ensure that you receive all HAPT news in a timely manner, please inform us of any name or address changes. Mahalo!

To those of you who received this newsletter via email and do not wish to receive future email from HAPT, please type "Remove Me" in the subject line and return the email. As a reminder, past editions of our newsletters are available for viewing at our website: www.hawaiiplaytherapy.net.



CONTACTING HAPT:

Please visit us on our website at www.hawaiiplaytherapy.net. We can also be reached by writing to P.O. Box 176, Pearl City, HI 96782, or emailing members of the HAPT Board of Directors.

Mary Welsh MS NCC MHC, President - president@hawaiiplaytherapy.net

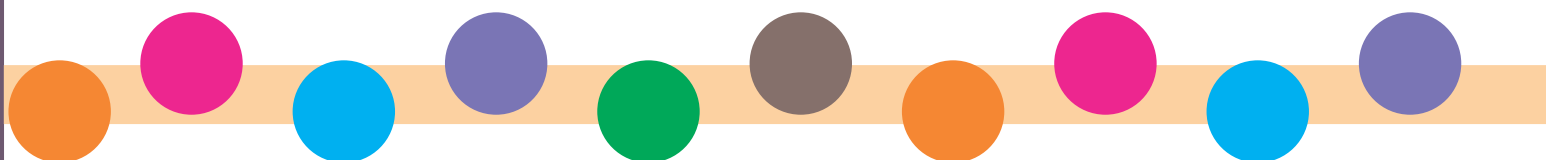
Dhira DiBiase, MSW, President-Elect - president-elect@hawaiiplaytherapy.net

Shelly Tokunaga-May, MSW, Past-President – past-president@hawaiiplaytherapy.net

Angela Won, MEd, Secretary - secretary@hawaiiplaytherapy.net

Janessa Jabkowski, MSW, LCSW, Treasurer - treasurer@hawaiiplaytherapy.net

Joanne Higashi, MSW, LCSW, Member-At-Large - member-at-large@hawaiiplaytherapy.net





**“It’s All About Relationship:
Working with Parents and Children with Multigenerational Attachment Issues through
Play, Play Therapy and Guided Parent-Child Interaction”**

Presented by Mary Lou Lomaka, LCSW,RPT and Candace Pang, ACSW

Saturday, Sept 21, 2013

From: 9:00 AM- 1:00 PM

At: Queen’s Gate Community Clubhouse

Directions and entry instructions to Queen’s Gate will provided at the time of registration.

9:00-10:00 AM Annual HAPT Membership Meeting

10:00 AM- 12:00 PM Play Therapy Presentation

Earn 2 Play Therapy CEs

Overview

Using case examples the presenters will discuss adult attachment issues frequently encountered in work with parents with a history of abuse/neglect, addiction and loss. The impact of parental attachment issues on infant attachment and the therapeutic use of relationship and play to strengthen the parent child relationship will be discussed. Specific strategies and play therapy modalities will be shared.

Learning Objectives

1. Participants will review the basic normative parent/child attachment process.
2. Participants will be able to identify at least 3 signs of possible attachments issues in adults.
3. Participants will be able to identify at least 3 ways that parental attachment affects infant attachment.
4. Participants will be able to identify at least 4 relational strategies for strengthening parental capacity to support infant attachment.

Presenters

Mary Lou Lomaka, LCSW, RPT is a private practitioner with many years’ experience providing therapy to CSW involved families. She currently provides therapy for mothers and young children at The Salvation Army Family Treatment Services (FTS) and is in private practice as a Play Therapist in East Honolulu.

Candace Pang, ACSW is Early Childhood Services Manager at FTS and has supervised FTS Therapeutic Nursery for over 15 years.

PLEASE JOIN US FOR A FUN AND STIMULATING WORKSHOP!

For more information, contact Mary Lou Lomaka at Email: locksandblocks@hawaii.rr.com.

Check out all the benefits of being a HAPT member, visit our website at www.hawaiiplaytherapy.net.

If you are paying through DOE purchase order, please use vendor#121780. **APT Provider #99-053**

Please mail your registration and payment to: HAPT, 25 Kaneohe Bay Dr., #204, Kailua HI 96734

Name: _____ Email: _____

Phone: _____ Address: _____

I am a HAPT member. Please include \$10 for the Workshop fee.

I am a non-member. Please include \$60 for the Workshop fee.

Mahalo! Confirmation will be sent by email.