



ANGUS BULL SALE

AT THE RANCH FEB. 27 2016, 3 P.M. FORT RICE, ND



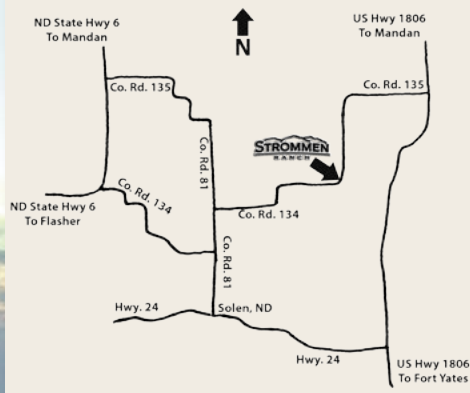


AARON & SHEYNA STROMMEN
COOPER, CLINT & CASSIDY

DIRECTIONS TO THE RANCH

From Mandan's Cenex on Main Street, take Highway 1806 South 27.5 miles. Turn West onto County Road 135. Go West about 4 miles. The road curves South. Continue South 3.5 miles. The ranch is on the West side of the road. Roads will be marked.

From Solen, go North on County Road 81 for 5 miles, then turn East onto County Road 134 for 7 miles.



Fellow Cattlemen:

It is our pleasure to welcome and invite you to our 2016 Strommen Ranch Angus Bull Sale. 2015 was a great year with ample moisture throughout the summer for our pastures and a mild fall and winter to extend our grazing well into the winter months.

We realize the markets have been a little challenging this year, but we want you to know that with the ebbs and flows of the markets, our commitment to our philosophy has never weakened. Last year in our welcome letter we wrote, "As input costs continue to rise, profitability in the beef business will be driven by cowherds that have the genetics in place to do more with less." This statement is just as important – if not more important – now than it was then. Profitable and sustainable operations will run cowherds that provide the desired outputs with minimal inputs. We are a seedstock provider that has placed extensive pressure on our cowherd to generate the right genetics that will positively impact our customers' bottomline: cattle that can do more with less.

We are excited to present this year's offering to you and are confident they will provide you with the necessary tools to produce pounds of beef in the most practical and profitable manner. Once again we have a great set of Resource bulls that continue to impress us. The Thunders and Revivals continue to give us balanced trait bulls that can be used on cows or heifers with confidence.

After having requests from customers to provide a selection of aged bulls in the sale, we retained a group of tremendous 2-year-old bulls for your selection. We intend to slowly grow this group until they comprise half of the sale offering. With the addition of registered females and our commitment to expanding our embryo transfer program, we hope to fulfill this request.

We invite you to attend our 13th Annual Angus Bull Sale on Saturday, Feb. 27, 2016, at 3 p.m. at the ranch. We will have the bulls penned in small groups outside to make viewing and selection easier. The bulls will not go through a ring, but are available for viewing right outside the sale barn. Once the auction starts, a large screen will play a video of each bull as he sells. Videos are available at www.StrommenRanch.com.

Thank you to our repeat customers for your trust and confidence in our cattle. We invite new and returning customers to come take a look at this year's offering and the females behind them. We are committed to our customers and will work hard to gain your trust, friendship and business. We take a tremendous amount of pride in our cattle and feel fortunate to be raising our family doing what we love most– being your ANGUS seedstock provider.

- Aaron & Sheyna Strommen





2016 ANGUS BULL SALE

AT THE RANCH • FEB 27, 2016 • 3 P.M.

SALE DAY PHONES

Aaron's Cell.....(701) 290-7983
Sheyna's Cell.....(701) 290-3886
Ranch Phone.....(701) 445-2020

SALE ORDER • We will start with the 2-year-olds and then the yearlings. We will follow consecutive sale book order.

TERMS AND CONDITIONS • All animals sell under the standard terms and conditions of the American Angus Association. Terms of the sale are cash. Full payment is due on sale day, unless prior arrangements have been made.

RETAINED INTEREST • Strommen Ranch is retaining 1/3 semen interest in all bulls selling.

BASE PRICE • All bulls will have a minimum price of \$3,000 sale day. Bidding will begin at the base price.

BULL DEVELOPMENT • These bulls have been handled correctly and developed without ANY creep. They have been fed just enough to express genetic differences, but not overfed as to compromise soundness or longevity. We want you to have a bull that will do his job and last for years. We believe our 90-day breeding season guarantee, detailed below, is among the best in the industry.

DISCOUNTS • We will offer a \$50/head discount if you purchased a bull last year and a \$50/head discount for volume purchases of 2 or more head.

EPDS • EPDs are current as of Jan. 22, 2016.

SALE STAFF

Kyle Shobe, Auctioneer.....(406) 366-0472
Kris Petersen(701) 339-0305
Scott Ressler.....(701) 391-7310

SALE TIME & LUNCH • The sale starts at 3 p.m. CST. Please join us for lunch beginning at 1 p.m. and remain with us after the sale for fellowship and refreshments.

FEEDING & DELIVERY • We will keep all bulls free of charge until delivery. Deliveries start May 1st. We ask that you work with us so that we can get bulls delivered in the most efficient manner. We will offer free delivery within 500 miles of the ranch.

HEALTH • All bulls have been on a complete health program as prescribed by Dr. Pat Bierman of the Mandan Vet Clinic, Mandan, N.D. Bulls have been given a vaccination for foot rot and will be boosted when they are fertility tested.

FERTILITY • All bulls will pass a fertility exam performed by Dr. Bierman before delivery.

SIGHT UNSEEN PURCHASES • If you, for some reason, are unable to attend the sale, but wish to place a bid, feel free to call us and we will handle your bid as if you were here. If you wish to be on the phone during the sale, we will try to accommodate your request. Please let us know in advance so arrangements can be made. All sight unseen purchases are fully guaranteed.

LIABILITY • Anyone attending this sale does so at their own risk. Neither the owners or anyone connected to this sale, assumes any liability, legal or otherwise.

GUARANTEE • Strommen Ranch is very confident that we have developed these bulls safely. They have been fed just enough to express genetic differences, but not overfed as to compromise soundness or longevity. **We want you to have a bull that will do his job and last for years.** It is important to us that these bulls not only perform from birth to yearling, but from birth through breeding. It is with this confidence in our bulls that we can give our full 90-day breeding season guarantee. We understand that these are animals and that injuries do occur, but we have the utmost confidence that we have developed these bulls in the best way to protect your investment. If an injury or death occurs, Strommen Ranch will guarantee them for the purchase price minus salvage value, or we will provide a replacement bull, if a suitable bull is available.

We don't make you take out an insurance policy and add that to the purchase price. We don't have a formula to take away half of the value of the bull if injury occurs. If the bull happens to get injured, we want to know so we can take care of the issue in a timely manner. At the same time, we expect you to care for your investment in your Strommen Ranch bull, so that if a problem does occur, the most appropriate care is taken. **We are committed to our customers and your success.**

Videos of the bulls are available on our website

www.StrommenRanch.com

Catalog, print advertisements and website designed by **Strommen Livestock Services** • Fort Rice, N.D. • (701) 445-2020 • (701) 290-3886



SAV RESOURCE 1441



Lot 5 • S R Resource 559



Lot 3 • S R Resource 540



Lot 21 • S R Resource 574



Lot 22 • S R Resource 543



Lot 35 • S R Resource 476

REFERENCE
SIRE

SAV RESOURCE 1441

BD: 1/7/2011

Reg #: 17016597

#R R Rito 707
Rito 707 of Ideal 3407 7075
Ideal 3407 of 1418 076

#S A V 8180 Traveler 004
S A V Blackcap May 4136
#S A V May 2397

Rito N Bar
Eriskay of Rollin Rock 3
#Ideal 1418 of 8103 4286
Ideal 076 of 692 8375
#Sitz Traveler 8180
Boyd Forever Lady 8003
#S A F 598 Bando 5175
S A V May 7238

CE	BW	WW	YW	Milk
0	3.5	72	136	31

Upon much research, evaluation and consideration, we decided that Resource needed to be a part of our program. We've been looking to incorporate close-up Rito 707 breeding and we think Resource is the best choice. This very moderate-framed bull is tremendously long, thick and stout, with as much Angus breed-character as you can put in one. He brings to the pasture the basics of efficiency and real-world fleshing ability with muscle, masculinity and superior feet quality.

We evaluated many Resource progeny and full siblings and liked what we saw. Included in the evaluation were 13 flush sisters of Resource. They were consistent in their phenotype and their fleshing ability, udder quality and feet were very good. His dam records a weaning ratio of 4/111 and has generated \$3.8 million in direct progeny sales. These cattle fit our ideals and philosophy on efficient, grass-based cattle production.

REFERENCE
SIRE

CONNELLY RIGHT ANSWER 746

BD: 1/13/2007

Reg #: 15832750

#Sitz Traveler 8180
#S A V Final Answer 0035
S A V Emulous 8145

#Hyline Right Time 338
Happy Dell of Conanga 262
Happy Daze of Conanga 6260

#G D A R Traveler 71
Sitz Everelda Entense 1137
#Bon View Bando 598
S A V Sky Emulous 2124
#Leachman Right Time
Hyline Pride 265
#J L B Exacto 416
Happy Date of Conanga

Connealy Right Answer 746 is a calving-ease bull we sampled to inject some Final Answer blood. He gave us a bit more frame and his calves will really grow. There are only two in the sale, but they are true calving-ease bulls with scale and performance.

CE	BW	WW	YW	Milk
12	-5	66	121	29



CONNEALY THUNDER

REFERENCE
SIRE

CONNEALY THUNDER

BD: 1/28/2005

Reg #: 15148659

#Jauer 353 Traveler 589 27
#Baldridge Kaboom K243 KCF
Pleasantia of Conanga 736

#Bon View Bando 598
#Parka of Conanga 241
Partina of Conanga 6237

Jauer 7111 Traveler 353 719
Jauer 6807 Traveler 27 085
#G T Maximum
#Pleasant Pill of Conanga
#Tehama Bando 155
#Bon View Dora 56
#Schoenes Fix It 826
Party Date of Conanga

CE	BW	WW	YW	Milk
10	-.9	45	90	25



Lot 41 • S R Thunder 403

After years of seeing tremendous daughters in a number of herds, we finally used this proven calving-ease sire. We appreciate his extreme balance of calving-ease, performance and carcass traits, and his ability to produce the exact type and kind of female we have been selecting for, with the phenotype we like.

This proven, Pathfinder sire excels in making daughters that are moderate in their mature frame, deep-ribbed, easy-keeping and ranks among the top 1% of the breed in heifer pregnancy EPD. His progeny have a near perfect foot, have superior udder structure and have a great disposition. You will see a continual influence of Thunder in our cowherd for years to come.



OX BOW REVIVAL 1313

REFERENCE
SIRE

OX BOW REVIVAL 1313

BD: 1/26/2011

Reg #: 17054381

#Sitz Upward 307R
Sitz Dash 10277
Sitz Everelda Entense 2665

#K C F Bennett Total
Ox Bow Manor 933
#Ox Bow Manor 7105

#Connealy Onward
Sitz Henrietta Pride 81M
#O C C Emblazon 854E
Sitz Everelda Entense 4948
#Sitz Alliance 6595
Ext of Conanga 6790
K C F Bennett Index
Ox Bow Manor 335

CE	BW	WW	YW	Milk
10	-.8	50	90	23



Lot 37 • S R Revival 484



Lot 40 • S R Revival 4103

Strommen Ranch and Genex selected Ox Bow Revival 1313 as the \$11,000, high-selling bull from Ox Bow Ranch's spring 2012 sale. After evaluating Revival, his dam and granddam, we knew he was a logical choice for our program. He delivers the convenience traits we believe good cattlemen want. He also provides the maternal traits we demand for low-maintenance, problem-free, efficient females: calving-ease, fleshing ability, udder quality, disposition, structure and fertility. Ox Bow Revival 1313 has exceeded our expectations for calving-ease, growth and temperament and his daughters are fantastic.



LOT 1 ~ S R RESOURCE 569

LOT 1 S R RESOURCE 569

BD: 03/16/15

Reg #: 18351804

Rito 707 of Ideal 3407 7075
S A V Resource 1441
 S A V Blackcap May 4136

O C C Paxton 730P
S R Bonnie Belle 104
 #S R Bonnie Belle 980

#R R Rito 707
 Ideal 3407 of 1418 076
 #S A V 8180 Traveler 004
 #S A V May 2397
 O C C Focus 813F
 O C C Blackbird 736K
 S R Canyon 712
 MH Bonnie Belle 945

BW	92
ADJ 205	729
WWR	113

CE	BW	WW	YW	Milk	Dam's Production
1	2.5	62	109	29	3/116

We lead our sale off with what we think is one of our best Resource calves. His dam, S R Bonnie Belle 104, will make Pathfinder status and also made the donor pen. Truly efficient, grass-based beef production starts with the genetics he has and with the phenotype he carries. This quiet-natured, heavy-made herd bull will leave a lasting effect on someone's herd. We will have 9 full siblings to 569 born this spring and we will continue to flush his dam after she calves. His maternal brother was Lot 1 in our 2014 sale, going to John Knudson of N.D.



V D A R Beauty 50 is the Great Granddam to Lot 2.

LOT 2 S R RESOURCE 563

BD: 03/14/15

Reg #: 18351870

Rito 707 of Ideal 3407 7075
S A V Resource 1441
 S A V Blackcap May 4136

O C C Emblazon 854E
#S R Beauty 507
 #M H Beauty 938

#R R Rito 707
 Ideal 3407 of 1418 076
 #S A V 8180 Traveler 004
 #S A V May 2397
 #D H D Traveler 6807
 Dixie Erica of C H 1019
 #High Valley 4C6 Ambush
 V D A R Beauty 50

BW	92
ADJ 205	703
WWR	109

CE	BW	WW	YW	Milk	Dam's Production
0	3.1	57	103	26	9/104

507 did it again. She just keeps plugging along. At 11 years old, she will calve first cycle A.I. with a Thunder heifer calf. We think this bull pulls it all together: performance, real-world functionality and a superior cow family. The Beauty cow family has been super productive and very fertile. The longevity of his Pathfinder dam and Pathfinder granddam has been great! Put him in your pen. He's a good one. Maternal brothers have sold to Tracy Rixen, Jim Hornbacher, Cody Sand, all of N.D., and Verlyn Stepler of Mont.



S R Resource 455, owned by Verlyn Stepler of MT, is Lot 2's full brother.



LOT 3 ~ S R RESOURCE 540

LOT 3 S R RESOURCE 540

BD: 03/11/15 Reg #: 18351818

Rito 707 of Ideal 3407 7075
S A V Resource 1441
 S A V Blackcap May 4136

#R R Rito 707
 Ideal 3407 of 1418 076
 #S A V 8180 Traveler 004
 #S A V May 2397
 #Sitz Traveler 8180
 #Sitz Barbaramere Jet 2698
 #O C C Emblazon 854E
 21 A R Sara 802A

BW	85
ADJ 205	688
WWR	107

#Sitz Alliance 6595
#S R Sara 808
 S R Sara 522

CE	BW	WW	YW	Milk	Dam's Production
3	1.8	58	107	27	6/105

Here is one of the most powerfully constructed Resource sons in the sale. His stout, massive and wide-based phenotype should put him toward the top of the Resource pen. His 1,250 lb. Pathfinder dam is a real productive and fertile cow that has stuck to her A.I. service every year. She scores a 9 out of 10 on her udder and shows her productivity with a WR of 6/105. The cowboys will find this one! Maternal brothers are working for Jim Hornbacher and Wayne Hager, both of N.D.

LOT 4 S R RESOURCE 576

BD: 03/20/15 Reg #: 18351820

Rito 707 of Ideal 3407 7075
S A V Resource 1441
 S A V Blackcap May 4136

#R R Rito 707
 Ideal 3407 of 1418 076
 #S A V 8180 Traveler 004
 #S A V May 2397
 #Sitz Traveler 8180
 #Sitz Barbaramere Jet 2698
 #O C C Emblazon 854E
 M H Betty 916

BW	97
ADJ 205	695
WWR	108

#Sitz Alliance 6595
S R Betty 820
 S R Betty 417

CE	BW	WW	YW	Milk	Dam's Production
-2	3.5	59	107	26	6/102

For those that liked our Lot 30 bull last year, here is a full brother that we think is even better! His mother is one of the easiest fleshing cows we have ever owned, and she just keeps getting better with age. Betty 820 sticks to her A.I. date every year and will again be calving first-cycle to Resource with a full brother bull calf. A full brother is working for Glenn & Vicky Gullickson and a maternal brother is working for Preston Henderson, all of N.D.



S R Betty 820 • Dam of Lot 4 with her 2013 heifer calf.



LOT 4 ~ S R RESOURCE 576



SA V Resource 1441



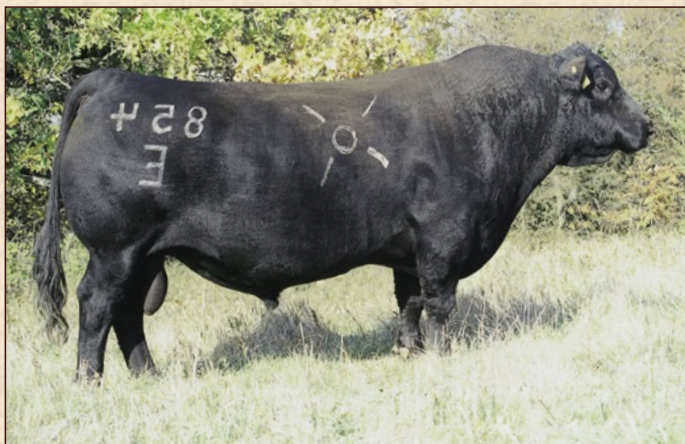
Sitz Alliance 6595

*Pictorial Sire Lineage
for the flush brothers!*

LOTS 5, 6, 7, 18 & 19



Sitz Traveler 9929



O C C Emblazon 854E



Rito 707 of Ideal 533 70 "Rito 149"



GDAR Rito 2100



PS Power Play



LOT 5 ~ S R RESOURCE 559

LOT 5 S R RESOURCE 559

BD: 03/13/15 Reg #: 18351827

Rito 707 of Ideal 3407 7075
S A V Resource 1441
 S A V Blackcap May 4136

#Sitz Alliance 6595
S R Polly 804
 #SR Polly 323

#R R Rito 707
 Ideal 3407 of 1418 076
 #S A V 8180 Traveler 004
 #S A V May 2397
 #Sitz Traveler 8180
 #Sitz Barbaramere Jet 2698
 #O C C Emblazon 854E
 #M H Polly 817

BW	97
ADJ 205	728
WWR	ET

CE	BW	WW	YW	Milk	Dam's Production
0	4.4	62	112	31	5/114

Here we have a phenotypically and genetically outstanding calf in this Resource son. He is a full brother to S R Gulch 441, the high-selling bull in 2015 that was selected by Pine Coulee Angus of Mont., as their choice of the Resource sons. He has been good since birth and is the standout from this group of flush brothers. His productive donor dam has a WR of 5/114 and stems from the productive Polly cow family at Van Dyke Angus in Mont. His pedigree reads Resource, Alliance 6595, Emblazon 854E, Traveler 9929, Rito 2100, PS Power Play, Shearbrook Shoshone and Rito 149, which is a history lesson of truly historical maternal breed leaders in the Angus world. 559 is a definite herd bull prospect that will command your attention. He is powerfully built, massively made, yet attractive and structurally sound. Pathfinder grand-dam and Pathfinder great granddam. Polly 804 is one of the best cows to graze our pastures, as were her dam and granddam. He is a great one! Flush brothers sell as Lots 6, 7, 18 & 19.

PHOTOS • Photos of sale lots and dams were captured by Aaron and/or Sheyna. We are far from being professional livestock photographers, but we enjoy the experience. . . most of the time!

Flush Brothers

LOT 6 S R RESOURCE 546

BD: 03/11/15 Reg #: 18351822

CE	BW	WW	YW	Milk	Dam's Production	BW	90
0	3.6	55	104	31	5/114	ADJ 205	634
						WWR	ET

LOT 7 S R RESOURCE 554

BD: 03/12/15 Reg #: 18351831

CE	BW	WW	YW	Milk	Dam's Production	BW	94
0	3.8	59	108	31	5/114	ADJ 205	680
						WWR	ET

Rito 707 of Ideal 3407 7075
S A V Resource 1441
 S A V Blackcap May 4136

#Sitz Alliance 6595
S R Polly 804
 #SR Polly 323

#R R Rito 707
 Ideal 3407 of 1418 076
 #S A V 8180 Traveler 004
 #S A V May 2397
 #Sitz Traveler 8180
 #Sitz Barbaramere Jet 2698
 #O C C Emblazon 854E
 #M H Polly 817

These tremendous flush brothers are backed by a maternal ancestry that is second-to-none in the Angus breed. They are full brothers to our high-selling Resource son in 2015, S R Gulch 441, the bull selected by Pine Coulee Angus of Mont., and S R Resource 559, Lot 5 in this sale. Their phenomenal dam could be one of the best cows to ever graze our pastures. We will have 19 siblings out of Polly 804 this spring and will continue flushing her after she calves a full sibling to these bulls. Flush brothers sell as Lots 5, 18 and 19.



LOT 8 ~ S R RIGHT ANSWER 536

LOT 8 S R RIGHT ANSWER 536

BD: 03/10/15

Reg #: 18351564

#S A V Final Answer 0035
#Connealy Right Answer 746
 Happy Dell of Conanga 262

#Sitz Traveler 8180
 S A V Emulous 8145
 #Hyline Right Time 338
 Happy Daze of Conanga 6260
 #S A F Focus of E R
 Woodhill Lass 344-1178
 O C C Paxton 730P
 S R Dorothy Ideal 825

BW	86
ADJ 205	730
WWR	114

#Woodhill Admiral 77K
S R Dorothy Ideal 3127
 S R Dorothy Ideal 029

CE	BW	WW	YW	Milk	Dam's Production
3	1.9	62	109	26	1/114

Here is a curve-bending Right Answer bull that is a total outcross to our breeding program. This larger-framed performance bull is out of a first-calf, heavy-milking Admiral daughter that posted a WR of 114. This cow family can be found throughout our cow herd as two of the best Resource calves in our sale also stem from the Dorothy Ideal cow family.



S R Dorothy Ideal 825 • Maternal great granddam of Lot 8.



LOT 9 ~ S R RIGHT ANSWER 556

LOT 9 S R RIGHT ANSWER 556

BD: 03/12/15

Reg #: 18351561

#S A V Final Answer 0035
#Connealy Right Answer 746
 Happy Dell of Conanga 262

#Sitz Traveler 8180
 S A V Emulous 8145
 #Hyline Right Time 338
 Happy Daze of Conanga 6260
 #Sitz Dash 10277
 Ox Bow Manor 933
 #L T Bandwagon 3105
 MH Lady Barbara 2101

Ox Bow Revival 1313
S R Lady Barbara 3135
 S R Lady Barbara 127

BW	78
ADJ 205	782
WWR	122

CE	BW	WW	YW	Milk	Dam's Production
6	-0.1	64	109	29	1/122

Here is the calving-ease and performance champion of the sale! His curve-bending EPDs and light BW, along with his domination at weaning, make him a definite herd bull option. His 1,100 lb. Revival dam is off to a great start, posting a 122 WWR on her first calf. This calf defines maternal and efficient beef production, weaning off at 67% of his dam's weight at weaning.



Ox Bow Revival 1313 • Sire of Lots 10, 11, 12 & 13

LOT 10 S R REVIVAL 509

BD: 03/05/15 Reg #: 18348498

#Sitz Dash 10277
Ox Bow Revival 1313
Ox Bow Manor 933

#Sitz Upward 307R
Sitz Everelda Entense 2665
#K C F Bennett Total
#Ox Bow Manor 7105
#Balldridge Kaboom K243 KCF
#Parka of Conanga 241
#21AR Outfitter 6032
S R Blackcap 509

BW	81
ADJ 205	651
WWR	101

#Connealy Thunder
S R Blackcap 318
#S R Blackcap 002

CE	BW	WW	YW	Milk	Dam's Production
5	0.1	46	86	24	1/101

Recommended for use on heifers. S R Revival 509 is out of a tremendous Thunder daughter that scored 9 on her udder and a perfect 10 on disposition. The Revival sons are very aggressive breeders and do a great job covering pastures. His Pathfinder granddam and great granddam are still in production, showing the fertility, productivity and longevity of this Blackcap cow family. If efficient, productive, maternal and calving-ease are qualities you are after, this bull pulls them all together with a phenotype that puts him at the top.

LOT 12 S R REVIVAL 526

BD: 03/08/15 Reg #: 18348495

#Sitz Dash 10277
Ox Bow Revival 1313
Ox Bow Manor 933

#Sitz Upward 307R
Sitz Everelda Entense 2665
#K C F Bennett Total
#Ox Bow Manor 7105
#Boyd New Day 8005
#G D A R Miss Wix 474
Papa Romeo 8050
Blackbird of R R 0468

BW	77
ADJ 205	704
WWR	109

#GDAR Game Day 449
S R Blackbird 356
DR BLACKBIRD of R R 0468 590

CE	BW	WW	YW	Milk	Dam's Production
5	1	53	88	23	1/109

Recommended for use on heifers. Here is a really nice calving-ease bull that ratioed very well at weaning as his dam's first calf. He is smooth-shouldered, attractive-fronted, long-bodied and his dam is one of the most gentle females on the ranch. Granddam has a production record of 8/103 WR and is the dam to Lot 45 in this sale.

LOT 11 S R REVIVAL 599

BD: 04/01/15 Reg #: 18348496

#Sitz Dash 10277
Ox Bow Revival 1313
Ox Bow Manor 933

#Sitz Upward 307R
Sitz Everelda Entense 2665
#K C F Bennett Total
#Ox Bow Manor 7105
Sinclair Rito Legacy 3R9
Sinclair Lady 03S3 4465
Sinclair Mt Time 4P88
DR Bliss 340

BW	84
ADJ 205	723
WWR	112

Sinclair Memento 8RL4
DR Emma 1122
DR Emma 762

CE	BW	WW	YW	Milk	Dam's Production
4	0.5	49	85	23	2/112

Here is one of the best potential calving-ease bulls from the Revival sire group. His Sinclair Memento dam has once again produced another high-performing, fault-free, well-balanced April-born bull. She previously produced the #1 YW bull in our 2014 sale, selected by Reich Angus of N.D.

LOT 13 S R REVIVAL 595

BD: 03/31/15 Reg #: 18348497

#Sitz Dash 10277
Ox Bow Revival 1313
Ox Bow Manor 933

#Sitz Upward 307R
Sitz Everelda Entense 2665
#K C F Bennett Total
#Ox Bow Manor 7105
#O C C Missing Link 830M
#Sitz Barbaramere Jet 132U
S R Great Plains 821
#S R Polly 717

BW	78
ADJ 205	669
WWR	104

Sitz Bridger 678X
S R Polly 253
S R Polly 067

CE	BW	WW	YW	Milk	Dam's Production
8	-0.7	49	88	24	1/104

Recommended for use on heifers. We have really gotten along well with the Revival females and expect S R Revival 595 to sire the same. A qualified three-generation calving-ease pedigree behind him and a smooth, attractive profile make him a good choice for a calving-ease prospect.



LOT 14 ~ S R RESOURCE 552

LOT 14 S R RESOURCE 552

BD: 03/12/15

Reg #: 18351798

Rito 707 of Ideal 3407 7075
S A V Resource 1441
 S A V Blackcap May 4136

#R R Rito 707
 Ideal 3407 of 1418 076
 #S A V 8180 Traveler 004
 #S A V May 2397
 #N Bar Emulation EXT
 N Bar Lady Ida S C C 2P37
 #Sitz Tradition RLS 8702
 #Miss Wix 3014 of Mc Cumber

BW	90
ADJ 205	711
WWR	111

#Sinclair Extra 4X13
Miss Wix 122 of Circle V
 Miss Wix 683 of Mc Cumber

CE	BW	WW	YW	Milk	Dam's Production
-1	2.9	57	105	25	3/100

A Resource son that excels in performance and maternal value. Ranchers will find this bull and appreciate his volume, masculinity and scale. His 4X13 dam is tremendous in her body length.



Sinclair Extra 4X13 is the Maternal Grand sire of Lot 14.

LOT 15 S R RESOURCE 596

BD: 03/31/15

Reg #: 18351812

Rito 707 of Ideal 3407 7075
S A V Resource 1441
 S A V Blackcap May 4136

#R R Rito 707
 Ideal 3407 of 1418 076
 #S A V 8180 Traveler 004
 #S A V May 2397
 #Hero 6267 of R R 2418
 Sinclair Lady 0C4 4465
 Sinclair Mt Time 4P88
 DR Mabel 2028

BW	85
ADJ 205	676
WWR	105

Sinclair Super Hero 8RD2
DR Mabel 198
 DR Mabel 695

CE	BW	WW	YW	Milk	Dam's Production
4	0.5	54	95	24	3/99

Resource 596 is a full brother to the bull selected by Paul Fornshell of N.D., in our 2015 sale. His beautifully made Hero-bred dam has a history of lighter birth calves and scored a 9 for udder quality and an 8 for disposition. The fertility is very high in this cow. She has stuck to her A.I. date every year.

LOT 16 S R RESOURCE 5102

BD: 04/02/15

Reg #: 18351805

Rito 707 of Ideal 3407 7075
S A V Resource 1441
 S A V Blackcap May 4136

#R R Rito 707
 Ideal 3407 of 1418 076
 #S A V 8180 Traveler 004
 #S A V May 2397
 #H A Image Maker 0415
 #CHK WGN Butterfly 807
 D D A Fahren 21X
 Feirings Miss Pioneer 859

BW	78
ADJ 205	650
WWR	101

Rockin Horse Tailor Made 456
K N M Farah 125
 Feirings Ms Fahren S41

CE	BW	WW	YW	Milk	Dam's Production
11	-1	48	94	28	3/103

Recommended for use on heifers or cows. Here is a definite calving-ease prospect with a -1 BW EPD. His unique outcross pedigree gives him mating flexibility for just about any herd and his powerful make-up and herd bull look put him right at the top for potential heifer bull buyers. If you study this book and do your homework, you'll find this bull! Trent Martin of N.D., selected a maternal brother.



Sitz Dash 10277 • Dash's Maternal Granddam is a full sister to Lot 17's dam.

LOT 17 S R DATELINE 555

BD: 03/12/15

Reg #: 18351507

- #Connealy Dateline
- #Vermilion Dateline 7078**
- #Vermilion Blackbird 5044
- #High Valley 4C6 Ambush
- Sitz Everelda Entense 4968**
- Sitz Everelda Entense 023

- #D H D Traveler 6807
- #Eila Eila of Conanga
- #Leachman Right Time
- Vermilion Blackbird 3525
- #Paramont Ambush 2172
- High Valley Gloria 1Q2
- #Traveler 124 G D A R
- Sitz Everelda Entense 1137

BW	98
ADJ 205	743
WWR	108

CE	BW	WW	YW	Milk	Dam's Production
-2	5.4	54	92	17	3/100

S R Dateline 555's dam is a full sister to the maternal granddam of the Pathfinder sire Sitz Dash. 555's granddam, Sitz Everelda Entense 023, set a new value record in 1999 as the featured Lot #1 in Sitz's Elite Cow Sale, selling for a world-record price of \$300,000. His great granddam, Sitz Everelda Entense 1137, also set a record when 1/2 interest on her sold for \$200,000 when she was 14 years of age. She was the Angus breed's first cow to generate \$4 million in progeny sales. Here is a unique outcross pedigree to our program, with a maternal history that is second-to-none in the Angus breed.

LOT 20 S R RESOURCE 570

BD: 03/17/15

Reg #: 18348492

- Rito 707 of Ideal 3407 7075
- S A V Resource 1441**
- S A V Blackcap May 4136
- O C C Paxton 730P
- S R Sky Tee Lass 208**
- S R Sky Tee Lass 052

- #R R Rito 707
- Ideal 3407 of 1418 076
- #S A V 8180 Traveler 004
- #S A V May 2397
- O C C Focus 813F
- O C C Blackbird 736K
- #Sitz Alliance 6595
- S R Sky Tee Lass 708

BW	88
ADJ 205	626
WWR	97

CE	BW	WW	YW	Milk	Dam's Production
3	2.1	55	102	23	2/92

An attractive, well-balanced performance bull that carries an adequate amount of muscle and volume. Good EPDs and a maternally strong pedigree.



Cooper (left) and Cassidy heading back to the barn to unsaddle.



Sitz Everelda Entense 023 • Maternal Granddam to Lot 17.

Flush Brothers

LOT 18 S R RESOURCE 507

BD: 03/04/15

Reg #: 18351833

CE	BW	WW	YW	Milk	Dam's Production	BW	82
0	2.1	54	103	31	5/114	ADJ 205	609
						WWR	ET

LOT 19 S R RESOURCE 514

BD: 03/06/15

Reg #: 18351824

CE	BW	WW	YW	Milk	Dam's Production	BW	94
0	1.7	60	110	31	5/114	ADJ 205	680
						WWR	ET

- Rito 707 of Ideal 3407 7075
- S A V Resource 1441**
- S A V Blackcap May 4136
- #Sitz Alliance 6595
- S R Polly 804**
- #SR Polly 323
- #R R Rito 707
- Ideal 3407 of 1418 076
- #S A V 8180 Traveler 004
- #S A V May 2397
- #Sitz Traveler 8180
- #Sitz Barbaramere Jet 2698
- #O C C Emblazon 854E
- #M H Polly 817

Flush brothers by Resource with performance EPD's and an impressive maternal lineage. These bulls will leave a long-lasting contribution and give you the advantage of having performance with an outstanding maternal presence. S R Polly 804 is certainly one of the best cows we have owned and she will leave a lasting mark on our herd. We have 19 calves to be born this spring by her and we are continuing to flush her to advance the Polly line. Flush brothers sell at Lots 5, 6 & 7.



S R Gulch 441, our sale-topping Lot in 2015 selected by Pine Coulee Angus of Mont., is a full brother to Lots 18 & 19.



LOT 21 ~ S R RESOURCE 574

LOT 21

S R RESOURCE 574

BD: 03/18/15

Reg #: 18351875

Rito 707 of Ideal 3407 7075
S A V Resource 1441
 S A V Blackcap May 4136

#R R Rito 707
 Ideal 3407 of 1418 076
 #S A V 8180 Traveler 004
 #S A V May 2397

BW	90
ADJ 205	700
WWR	109

#Ideal 7451 of 8103 4465
Ideal 4535 of 7451 5467
 Ideal 5467 of 6807 7211

Ideal 8103 of Eldo 5110 5213
 Ideal 4465 of 6807 4286
 #D H D Traveler 6807
 IDEAL7211 Landmark 5215 4108

CE	BW	WW	YW	Milk	Dam's Production
-1	2.9	60	109	25	10/102

Ideal 4535 is one of our foundation Jorgenson cows that has many daughters and granddaughters working in our herd. This bull has as much true muscle and shape as any bull we have produced. He is thick, moderate-framed and has as much beef on him as any bull in the sale. Pay attention here. He may be a sleeper in this sale. Maternal brothers are working for Wayne Gerbig and Cody Sand, both of N.D.



Ideal 7451 of 8103 4465 • Maternal Grandsire of Lot 21.

“IF YOU CAN’T PUT YOUR HEAD ON YOUR PILLOW AT NIGHT AND VISUALIZE YOUR IDEAL COW, THE ODDS OF YOU MAKING ONE ARE VERY, VERY SLIM.”

“I AM ANGUS: ED OLIVER, GEORGIA”



DHD Traveler 6807 • Maternal Great Grandsire of Lot 21.



LOT 22 ~ S R RESOURCE 543

LOT 22 S R RESOURCE 543

BD: 03/11/15

Reg #: 18351854

Rito 707 of Ideal 3407 7075
S A V Resource 1441
 S A V Blackcap May 4136

#R R Rito 707
 Ideal 3407 of 1418 076
 #S A V 8180 Traveler 004
 #S A V May 2397
 #O C C Magnitude 805M
 21AR Sara E802
 #Ideal 7451 of 8103 4465
 Ideal 5467 of 6807 7211

BW	91
ADJ 205	717
WWR	112

#21AR Outfitter 6032
S R Dorothy Ideal 825
 Ideal 4535 of 7451 5467

CE	BW	WW	YW	Milk	Dam's Production
-6	3.1	63	112	27	6/102

Another one of the really good bulls in the sale. S R Resource 543 is tremendously long and deep and is wide in his base width and naturally easy-fleshing. He is extremely balanced in his phenotype and has the performance to back it all up. His dam is a maternal sister to Lot 21. She is a big-bodied, thick-made cow that has natural fleshing ability and a great disposition. His granddam, Ideal 4535, is one of our foundation Jorgenson cows and her influence can be seen throughout this sale. Maternal brothers to Lot 22's dam were selected by Cody Sand and Wayne Gerbig, both of N.D.



S R Dorothy Ideal 825 • Dam of Lot 22.



LOT 23 ~ S R RESOURCE 567

LOT 23 S R RESOURCE 567

BD: 03/15/15

Reg #: 18351787

Rito 707 of Ideal 3407 7075
S A V Resource 1441
 S A V Blackcap May 4136

#R R Rito 707
 Ideal 3407 of 1418 076
 #S A V 8180 Traveler 004
 #S A V May 2397
 S R Canyon 712
 S R Canyon 712
 S R Beauty 706
 #21AR Outfitter 6032
 S R Eldorene 611

BW	83
ADJ 205	700
WWR	109

S R Canyon 712 048
S R Eldorene 269
 S R Eldorene 954

CE	BW	WW	YW	Milk	Dam's Production
-2	2.5	62	111	25	2/94

S R Resource 567 is a wide-based, deep-chested, high-volume bull with true Angus breed character. Resource was the #1 semen revenue bull at Genex and cowboys around the country appreciate his progeny for their thickness, muscle, superb structure, feet quality and breed character. Dam scored 9 for udder quality and an 8 for disposition.



S R Resource 494, owned by Verlyn Stepler of MT, is Lot 25's full brother.



Lassie 104 of Circle V • Dam of Lot 25.

LOT 24 S R RESOURCE 5104

BD: 04/03/15

Reg #: 18351799

Rito 707 of Ideal 3407 7075	#R R Rito 707	<table border="1"> <tr><td>BW</td><td>90</td></tr> <tr><td>ADJ 205</td><td>656</td></tr> <tr><td>WWR</td><td>102</td></tr> </table>	BW	90	ADJ 205	656	WWR	102
BW	90							
ADJ 205	656							
WWR	102							
S A V Resource 1441	Ideal 3407 of 1418 076							
S A V Blackcap May 4136	#S A V 8180 Traveler 004							
	#S A V May 2397							
S R Alliance 904	#Sitz Alliance 6595							
Miss Wix 145 of Circle V	S R Betty 512							
Miss Wix 6227 of Mc Cumber	MC Cumber 8005 New Day 455							
	Miss Wix 4179 of Mc Cumber							

CE	BW	WW	YW	Milk	Dam's Production
-1	3.4	52	103	30	3/108

The Resource X Alliance mating has worked very well and here is another with the performance and maternal lineage that has been popular with commercial cattlemen. Their thickness, muscle, breed character, volume and fleshing-ability comes without the extra cost to help drive profitability in the right direction. Justin Lund of N.D., selected a full brother in our 2015 sale.

LOT 26 S R RESOURCE 573

BD: 03/17/15

Reg #: 18351801

Rito 707 of Ideal 3407 7075	#R R Rito 707	<table border="1"> <tr><td>BW</td><td>91</td></tr> <tr><td>ADJ 205</td><td>628</td></tr> <tr><td>WWR</td><td>98</td></tr> </table>	BW	91	ADJ 205	628	WWR	98
BW	91							
ADJ 205	628							
WWR	98							
S A V Resource 1441	Ideal 3407 of 1418 076							
S A V Blackcap May 4136	#S A V 8180 Traveler 004							
	#S A V May 2397							
O C C Paxton 730P	O C C Focus 813F							
S R Lucy 106	O C C Blackbird 736K							
S R Lucy 719	#B C C Bushwacker 41-93							
	M H Lucy 761							

CE	BW	WW	YW	Milk	Dam's Production
0	2.9	55	100	22	3/96

If you are looking for another Resource to add to the pen, here is a long, thick, big-butted individual. A full brother was selected last year by Kyle and Shalene Nygaard of N.D.

LOT 25 S R RESOURCE 557

BD: 03/13/15

Reg #: 18351796

Rito 707 of Ideal 3407 7075	#R R Rito 707	<table border="1"> <tr><td>BW</td><td>86</td></tr> <tr><td>ADJ 205</td><td>646</td></tr> <tr><td>WWR</td><td>100</td></tr> </table>	BW	86	ADJ 205	646	WWR	100
BW	86							
ADJ 205	646							
WWR	100							
S A V Resource 1441	Ideal 3407 of 1418 076							
S A V Blackcap May 4136	#S A V 8180 Traveler 004							
	#S A V May 2397							
S R Alliance 904	#Sitz Alliance 6595							
Lassie 104 of Circle V	S R Betty 512							
Lassie 6199 of Mc Cumber	MC Cumber 7078 VRD 3108							
	Lassie 331 of Mc Cumber							

CE	BW	WW	YW	Milk	Dam's Production
2	2.7	51	100	32	3/114

Lassie 104 is a tremendous cow that ties all profitable traits together. She is massively made, moderate in her size, easy-fleshing, great-uddered, has a quiet disposition, is fertile and super productive. S R Resource 557 is a nicely made, attractive bull with a great EPD profile and will sire market-topping steers and females built for profitable beef production.

LOT 27 S R RESOURCE 530

BD: 03/09/15

Reg #: 18351789

Rito 707 of Ideal 3407 7075	#R R Rito 707	<table border="1"> <tr><td>BW</td><td>85</td></tr> <tr><td>ADJ 205</td><td>610</td></tr> <tr><td>WWR</td><td>95</td></tr> </table>	BW	85	ADJ 205	610	WWR	95
BW	85							
ADJ 205	610							
WWR	95							
S A V Resource 1441	Ideal 3407 of 1418 076							
S A V Blackcap May 4136	#S A V 8180 Traveler 004							
	#S A V May 2397							
O C C Paxton 730P	O C C Focus 813F							
S R Eldorene 245	O C C Blackbird 736K							
#MH Eldorene 15	Sitz Traveler 10619							
	M H V D A R Eldorene 410							

CE	BW	WW	YW	Milk	Dam's Production
4	1.2	46	91	24	2/99

Another Resource-sired bull out of a Paxton dam. This combination has worked well for producing moderate-framed, wide-bodied, easy-fleshing cattle that work in the harshest environments and S R Resource 530 fits the mold.



We can't think of anything more enjoyable than watching cattle graze as the sun goes down.

LOT 28 S R THUNDER 592

BD: 03/29/15

Reg #: 18351541

#Baldridge Kaboom K243 KCF #Jauer 353 Traveler 589 27
#Connealy Thunder Pleasanta of Conanga 736
 #Parka of Conanga 241 #Bon View Bando 598
 #21AR Outfitter 6032 Partina of Conanga 6237
S R Clova Pride 047 #O C C Magnitude 805M
 M H Clova Pride 834 21AR Sara E802
 O C C Broadside 876B
 Miss Lodge Pole 932

BW	79
ADJ 205	595
WWR	93

CE	BW	WW	YW	Milk	Dam's Production
3	0.3	38	74	19	4/89

Recommended for use on heifers. S R Thunder 592's maternal and calving-ease pedigree should make him a good choice for a heifer bull. The Thunder daughters we have calved are tremendous young females that are productive and have great dispositions.

LOT 29 S R THUNDER 516

BD: 03/06/15

Reg #: 18351543

#Baldridge Kaboom K243 KCF #Jauer 353 Traveler 589 27
#Connealy Thunder Pleasanta of Conanga 736
 #Parka of Conanga 241 #Bon View Bando 598
 #21AR Outfitter 6032 Partina of Conanga 6237
S R Dorothy Ideal 011 #O C C Magnitude 805M
 Ideal 4535 of 7451 5467 21AR Sara E802
 Ideal 5467 of 6807 7211 #Ideal 7451 of 8103 4465
 Ideal 5467 of 6807 7211

BW	78
ADJ 205	659
WWR	102

CE	BW	WW	YW	Milk	Dam's Production
4	-0.7	46	87	23	4/98

Recommended for use on heifers. After calving the first Thunder daughters, we are excited about the future. This calving-ease Thunder son carries a bit more size and scale. Maternal brothers were selected by Duane Feiring and Jay Evenson, both of N.D., in our 2014 sale.



Strommen Ranch delivers!



S R Dorothy Ideal 825 • Full sister to the Dam of Lot 29.



S R Lucy 319 • Dam of Lot 31.

LOT 31 S R REVIVAL 5119

BD: 04/18/15

Reg #: Pending

#Sitz Dash 10277 #Sitz Upward 307R
Ox Bow Revival 1313 Sitz Everelda Entense 2665
 Ox Bow Manor 933 #K C F Bennett Total
 #Ox Bow Manor 7105
S R Lucy 319 #D H D Traveler 6807
 M H Lucy 761 Dixie Erica of C H 1019
 #N Bar Emulation EXT
 V D A R Lucy 336

BW	89
ADJ 205	710
WWR	110

CE	BW	WW	YW	Milk	Dam's Production
7	0.7	43	80	18	11/98

Lot 31's full brother is Lot 37, a 2-year-old bull that we used on our registered herd. This calf may be a little younger, but by turn-out time, he will be impressive. He scored a 110 WR! Dam scores a perfect 10 on both udder score and disposition.

LOT 30 S R THUNDER 5106

BD: 04/03/15

Reg #: 18351534

#Baldridge Kaboom K243 KCF #Jauer 353 Traveler 589 27
#Connealy Thunder Pleasanta of Conanga 736
 #Parka of Conanga 241 #Bon View Bando 598
 #GDAR Game Day 449 Partina of Conanga 6237
S R Beauty 230 #Boyd New Day 8005
 S R Beauty 605 #G D A R Miss Wix 474
 #O C C Emblazon 854E
 M H Beauty 807

BW	89
ADJ 205	768
WWR	119

CE	BW	WW	YW	Milk	Dam's Production
3	1.7	54	96	25	2/109

Four generations of maternal genetics here. This early-April Thunder son really gained well. His smooth-made, attractive profile will really catch your eye.

LOT 32 S R REVIVAL 5120

BD: 04/18/15

Reg #: Pending

#Sitz Dash 10277 #Sitz Upward 307R
Ox Bow Revival 1313 Sitz Everelda Entense 2665
 Ox Bow Manor 933 #K C F Bennett Total
 #Ox Bow Manor 7105
S R Lady Blue 203 O C C Focus 813F
 #S R Lady Blue 631 O C C Blackbird 736K
 Oak Hollow 7709 of 1318 1118
 Farview Lady Blue 2228

BW	88
ADJ 205	709
WWR	110

CE	BW	WW	YW	Milk	Dam's Production
7	0.8	49	83	20	2/104

A middle-of-April calf that ratioed 110 at weaning in his contemporary group. His 2-year-old maternal brother sells as Lot 41. Here is another calf that just keeps getting better with age. Dam scores a 9 out of 10 on her udder.



OUR LONG-TERM COMMITMENT AND VISION FOR

True profitability in the beef business is driven by cattle that can do more with less.

As your seedstock provider, we want your operation to be profitable and sustainable for generations – regardless of the market. That is why we require our stock to thrive in a Northern Plains, grass-based environment with minimal supplementation. They must do more with less.

Strommen Ranch cows must calve annually and wean a calf that is a high percentage of its dam's bodyweight. They must also possess the basic phenotypic traits to cover country, breed on time, have the smarts and mothering ability to do it on their own, all the while performing under the conditions that Mother Nature has dealt us. We select for fertility, longevity, sound structure and realistic performance in the cowherd.

Strommen Ranch calves grow out on grass. We DO NOT creep feed. It would be easy for us to achieve 800-900 lb. weaning weights if we used creep feed, but we choose to run our seedstock operation like a real-world commercial operation. We want your calves to perform in your environment – that's why we ask our bulls and females to shine in a similar one. We are proud of the fact that for 9 years straight, we've increased weaning weights, while maintaining mature cow size and placing downward pressure on our input costs. We are continually asking our cattle to do more with less.

Similarly, in our development program we also begin with the end in mind. We don't need to know which calf can eat the most – we need to know which calf can do the most in his natural environment. This helps us protect your investment in a Strommen Ranch bull. In order for you to have a bull that lasts and has longevity, he should not be pushed



YOUR PROFITABILITY

at an early age. It is our intention to identify optimum gains. We hope to have allowed the bulls to express their genetic potential without pushing so much energy through them that feet, hock or liver damage occur. Our ultimate goal is to have the bulls range-ready, sound-footed and ready to go to work for you.

As your seedstock source, we are fully committed to producing the type of cattle that will positively impact your bottomline. Having traveled extensively as an A.I. rep. for Genex and looking at cowherds throughout the region, I believe that cattle with phenotypic appeal, fleshing ability and fertility are the most profitable. Cattle that breed early in the cycle, are structurally sound and can raise big calves efficiently in a practical environment with minimal inputs are the kind of cattle we produce and believe will have a positive impact on your bottomline now and into the future.

A BALANCING ACT:

Chasing fads or using one-trait selection is a really good way to hurt the important traits we all need to survive in the beef industry. The important traits every cowherd needs are fertility, longevity and fleshing ability, as well as sound feet, legs and udders. It is our intention to breed cattle that excel at certain traits, but not at the expense of other important traits.

- We want fleshing ability, but not at the expense of fertility.
- We want cattle to perform, but not to an extreme that it diminishes the cows' ability to breed back and maintain her condition in our environment.
- We want to continually improve weaning weights, but not with the expense of added input cost.
- We want cattle with acceptable carcass merit, but not at the expense of maternal traits.
- We select cattle that are moderate in frame, but we demand that they perform and have ample muscle.

This all sounds like a perfect game plan, but is really a juggling act of sorts. We do extensive research and appraise lots of cattle so that we can make the best informed decision about the genetics we bring in to keep our program moving in the right direction.

By taking a balanced approach to genetic improvement, we hope to manage our risk – and help you manage yours.



STROMMEN
RANCH

ABOUT THE 2 YEAR-OLDS

After having requests from customers to provide a selection of aged bulls in the sale, we kept back a group of tremendous 2 year-old bulls for your selection. It is our goal to slowly add to this group until they comprise half of the sale offering. With the addition of registered females and our commitment to expanding our embryo transfer program, we hope to fulfill this request.

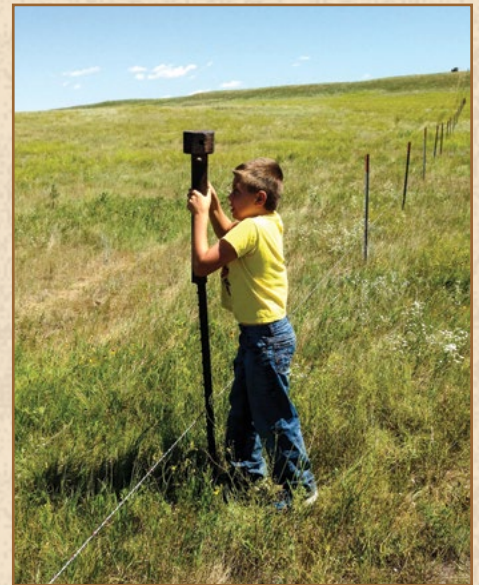
The bulls were developed as yearlings in a similar fashion as our 2015 sale group. They were developed this summer on grass hay. In October, they were put on a TMR ration of corn, modified distillers and grass hay. Some of the bulls were used on groups of heifers or cows and those will be noted and tested in accordance with our veterinarian's recommendations. The rest are virgin bulls that were specifically kept for this sale. They are thick, stout and ready for heavy service in big country. We are excited to slowly expand this offering as it gives us the chance to see our genetics as they age and develop.



Everyone has a job to do at Strommen Ranch.



Above (L to R), friends and neighbors Brandon Hatzenbuhler, Aaron, Jim Hornbacher and Denny Brimer were a part of the working crew at pregnancy ultrasound time. Below, Steph Hille (left) and Cassidy (center) did their part. Thanks, friends!



Pounding posts: how ranch kids prepare for football season!



You do what you have to do to access your "Angus Mobile" app.



Sheyna has complete and total concentration on the payloader.



Cora Huss, an NDSU student, interned here this summer. Thanks, Cora!



LOT 35 ~ S R RESOURCE 476

LOT 35 S R RESOURCE 476

BD: 03/25/14

Reg #: 18012183

Rito 707 of Ideal 3407 7075
S A V Resource 1441
 S A V Blackcap May 4136
 Rockin Horse Tailor Made 456
K N M Mayflower 041
 K N M Mayflower 265

#R R Rito 707
 Ideal 3407 of 1418 076
 #S A V 8180 Traveler 004
 #S A V May 2397
 #H A Image Maker 0415
 #CHK WGN Butterfly 807
 K N M Ambush 925
 K N M Mayflower 923

BW	84
ADJ 205	546
WWR	94

CE	BW	WW	YW	Milk	Dam's Production
7	0.4	48	93	26	4/95

Virgin 2-year-old. The cowboys will find this one! Massive, stout, thick and wide are all terms that would fit when describing 476. S R Resource 476 walks off on a wide base and steps down on heavy bone with a perfect foot. 476's dam scores a 9 on udder and an 8 on temperament. Not too often will you find one made like this. Maternal brothers have sold to Larry Vetter and Trent Martin, both of N.D.



Clint passed his "drivers test" in March and got to bring his chair home in April, 2015. He immediately led us on an excursion around the ranch, including stops to look at cattle (from outside the pen).

LOT 36 S R RESOURCE 489

BD: 03/30/14

Reg #: 18012154

Rito 707 of Ideal 3407 7075
S A V Resource 1441
 S A V Blackcap May 4136
 S R Alliance 904
Lassie 101 of Circle V
 Lassie 841 of Circle V

#R R Rito 707
 Ideal 3407 of 1418 076
 #S A V 8180 Traveler 004
 #S A V May 2397
 #Sitz Alliance 6595
 S R Betty 512
 #Sinclair Extra 4X13
 Lassie 4194 of Mc Cumber

BW	85
ADJ 205	595
WWR	103

CE	BW	WW	YW	Milk	Dam's Production
2	1.9	56	105	27	3/97

Virgin 2-year-old. One of the two Resource 2-year-olds to sell in this sale and he is good. He has the true muscle that is bred-in, not fed-on. He is easy-fleshing and big-barreled. S R Resource 489 is a balanced bull bred for profitable beef production. His dam scores high on both udder and disposition scores.



LOT 36 ~ S R RESOURCE 489



LOT 37 ~ S R REVIVAL 484

LOT 37 S R REVIVAL 484

BD: 03/29/14

Reg #: 18012212

#Sitz Dash 10277
Ox Bow Revival 1313
 Ox Bow Manor 933

#Sitz Upward 307R
 Sitz Everelda Entense 2665
 #K C F Bennett Total
 #Ox Bow Manor 7105
 #D H D Traveler 6807
 Dixie Erica of C H 1019
 #N Bar Emulation EXT
 V D A R Lucy 336

BW	85
ADJ 205	614
WWR	106

#O C C Emblazon 854E
SR Lucy 319
 M H Lucy 761

CE	BW	WW	YW	Milk	Dam's Production
7	0	46	81	18	11/98

At 13-years-old, S R Revival 484's dam, Lucy 319, is the definition of longevity. She has stood the test of time and still looks like she could have 5 or 6 more years in her. 484 is clean-fronted, big-volumed and heavy-musclcd. We thought enough of him to use him on a group of registered cows this summer. His dam scores a perfect 10 on udder and a 10 on disposition. She is one of the ultimate, all-time favorite cows to ever walk the ranch. Maternal brothers have sold to Curt Richard, Jim Hornbacher, Mark Schaffer, Travis Engelhard, Glenn & Vicky Gullickson and Scott Dockter, all of N.D.



S R Lucy 319 • 13-year-old Dam of Lot 37.



WE STRIVE TO PRODUCE:
Hard working, moderate-framed, easy-fleshing,
 maternally oriented ANGUS cattle.



LOT 38 ~ S R GAME DAY 451



Basin Clova Pride 933L • Dam of Lot 38

LOT 38 S R GAME DAY 451

BD: 03/14/14 Reg #: 18021574

#Boyd New Day 8005
#GDAR Game Day 449
#G D A R Miss Wix 474

#Brooks Ext 792
#Basin Clova Pride 933L
Basin Clova Pride 776J

#A A R New Trend
S V F Forever Lady 57D
#Tehama Band 207
G D A R Miss Wix 749
#N Bar Emulation EXT
Princess 4103 B C B R
#Basin Rainmaker 814Z
Basin Clova Pride 2047

BW	76
ADJ 205	516
WWR	ET

CE	BW	WW	YW	Milk	Dam's Production
14	-1.9	40	74	27	9/103

Recommended for use on heifers or cows. Here is our only Game Day son in the sale, but he is good! His Pathfinder dam goes back to Pathfinder sires Brooks EXT 792 and Basin Rainmaker 814Z. She is also the granddam to the Riverbend herdsire Basin Pay-weight 022W. S R Game Day 451 saw use on a group of heifers.



LOT 40 ~ S R REVIVAL 4103

LOT 39 S R REVIVAL 459

BD: 03/16/14 Reg #: 18010819

#Sitz Dash 10277
#Ox Bow Revival 1313
Ox Bow Manor 933

O C C Paxton 730P
S R Travette 241
S R Travett 801

#Sitz Upward 307R
Sitz Everelda Entense 2665
#K C F Bennett Total
#Ox Bow Manor 7105
O C C Focus 813F
O C C Blackbird 736K
#Sitz Alliance 6595
S R Travett 501

BW	67
ADJ 205	544
WWR	97

CE	BW	WW	YW	Milk	Dam's Production
12	-1.7	44	80	20	2/91

Recommended for use on heifers or cows. Here is a sure-fire, sleep-all-night, calving-ease bull! 459 is a nice-patterned, moderate-framed bull that has a maternally stacked pedigree – his reads Revival, Paxton, Alliance and Emblazon. It will be hard to find a pedigree with more proven female makers in it! We kept this bull back to use on some heifers.

LOT 40 S R REVIVAL 4103

BD: 04/03/14 Reg #: 18010833

#Sitz Dash 10277
#Ox Bow Revival 1313
Ox Bow Manor 933

#GDAR Game Day 449
S R Beauty 225
S R Beauty 502

#Sitz Upward 307R
Sitz Everelda Entense 2665
#K C F Bennett Total
#Ox Bow Manor 7105
#Boyd New Day 8005
#G D A R Miss Wix 474
#Leachman Right Time
M H Beauty 723

BW	79
ADJ 205	557
WWR	100

CE	BW	WW	YW	Milk	Dam's Production
7	0.8	43	82	22	2/101

Virgin 2-year-old. Recommended for use on heifers or cows. His perfect-uddered, quiet-natured dam is bred for maternal greatness with Game Day, Right Time, Traveler 6807 and New Trend in her pedigree. The maternal brother to the dam of S R Revival 4103 was the Lot 1 bull in our 2015 sale and sold to Bill Lindskov of S.D.



S R Beauty 502 • Granddam Lot 40



M H Beauty 723 • Great Granddam Lot 40



V D A R Beauty 50 • Great Great Granddam Lot 40



LOT 41 ~ S R THUNDER 403

LOT 41 S R THUNDER 403

BD: 03/06/14

Reg #: 18023123

#Baldridge Kaboom K243 KCF
#Connealy Thunder
 #Parka of Conanga 241

O C C Paxton 730P
S R Lady Blue 203
 #S R Lady Blue 631

#Jauer 353 Traveler 589 27
 Pleasanta of Conanga 736
 #Bon View Bando 598
 Partina of Conanga 6237
 O C C Focus 813F
 O C C Blackbird 736K
 Oak Hollow 7709 of 1318 1118
 Farview Lady Blue 2228

BW	82
ADJ 205	544
WWR	97

CE	BW	WW	YW	Milk	Dam's Production
6	0.8	44	80	21	2/104

Recommended for use on heifers or cows. This is one of my favorite Thunder bulls in the sale. His big-bodied, easy-fleshing dam is out of a Pathfinder Oak Hollow daughter and is near perfect in her udder. Proven, three-generation calving-ease pedigree. He was used on a group of heifers.

LOT 43 S R THUNDER 496

BD: 03/31/14

Reg #: 18021638

#Baldridge Kaboom K243 KCF
#Connealy Thunder
 #Parka of Conanga 241

#O C C Emblazon 854E
S R Beauty 425
 M H Beauty 9121

#Jauer 353 Traveler 589 27
 Pleasanta of Conanga 736
 #Bon View Bando 598
 Partina of Conanga 6237
 #D H D Traveler 6807
 Dixie Erica of C H 1019
 V D A R High Profile 22
 V D A R Beauty 50

BW	89
ADJ 205	513
WWR	89

CE	BW	WW	YW	Milk	Dam's Production
5	0.9	36	71	19	8/96

Virgin 2-year-old. S R Thunder 496 is a nice-patterned, maternally pedigreed bull that is balanced and built to handle heavy use. His easy-fleshing Emblazon mother is always in good condition and very fertile. Maternal brothers have sold to Rick Gross, Kim Shade and Preston Henderson, all of N.D.

LOT 42 S R THUNDER 482

BD: 03/29/14

Reg #: 18021603

#Baldridge Kaboom K243 KCF
#Connealy Thunder
 #Parka of Conanga 241

Sinclair Entrepreneur 8R101
Miss Wix 107 of Circle V
 Miss Wix 803 of Circle V

#Jauer 353 Traveler 589 27
 Pleasanta of Conanga 736
 #Bon View Bando 598
 Partina of Conanga 6237
 #R R Rito 707
 N Bar Kinochtry Beauty Z1925
 #Sinclair Extra 4X13
 Miss Wix 6102 of Mc Cumber

BW	89
ADJ 205	586
WWR	101

CE	BW	WW	YW	Milk	Dam's Production
4	1.7	44	81	19	1/101

Virgin 2-year-old. S R Thunder 482's dam scores a 9 on udder and a 9 for temperament. This is a Thunder son that is really nice in his pattern, has good muscle shape and out of a dam that is very easy-fleshing. These 2-year-olds will be able to handle a large group of cows in big country.

LOT 44 S R RANGEFINDER 730 495

BD: 03/31/14

Reg #: 18010831

#B C C Bushwacker 41-93
S R Rangefinder 730
 M H Eldorene 712

#Sitz Alliance 6595
S R Travett 801
 S R Travett 501

#Paramont Ambush 2172
 R C Anita T Bando 918903
 #V D A R Lucys Boy
 M H V D A R Eldorene 410
 #Sitz Traveler 8180
 #Sitz Barbaramere Jet 2698
 #O C C Emblazon 854E
 #S R Travett 105

BW	87
ADJ 205	597
WWR	103

CE	BW	WW	YW	Milk	Dam's Production
5	1.4	42	70	20	6/101

Virgin 2-year-old. Here is a nicely balanced 2-year-old bull that is maternally stacked with some of the greatest bulls the breed has seen for producing efficient and practical range cows. Bushwacker, Lucy's Boy, Alliance, Traveler 8180 and Emblazon are all proven bulls in 495's pedigree that represent efficient beef production.



LOT 45 ~ S R RANGEFINDER 730 4118

LOT 45 S R RANGEFINDER 730 4118

BD: 04/22/14 Reg #: 18010838

#B C C Bushwacker 41-93
S R Rangefinder 730
 M H Eldorene 712

#Paramont Ambush 2172
 R C Anita T Bando 918903
 #V D A R Lucys Boy
 M H V D A R Eldorene 410
 #Papa Universe 515
 #Papa Blackcap Effie 469
 #R R Hero 6267
 Blackbird of R R 7274

BW	89
ADJ 205	550
WWR	95

Papa Romeo 8050
DR BLACKBIRD of R R 0468 590
 Blackbird of R R 0468

CE	BW	WW	YW	Milk	Dam's Production
2	2.8	38	55	18	8/103

Virgin 2-year-old. Another son of our good Rangefinder bull. We raised and sold S R Rangefinder 730, the sire of Lots 44, 45, 46 and 47. We bought him back, used him for a few years and then sold him to another commercial cattleman. We estimate that 730 serviced roughly 270 cows across three herds in his lifetime. His powerfully constructed son, S R Rangefinder 730 4118, has the potential to do the same.



We were extremely excited to host a tour group from Chile this summer.

LOT 46 S R RANGEFINDER 730 4117

BD: 04/22/14 Reg #: 18010837

#B C C Bushwacker 41-93
S R Rangefinder 730
 M H Eldorene 712

#Paramont Ambush 2172
 R C Anita T Bando 918903
 #V D A R Lucys Boy
 M H V D A R Eldorene 410
 #D H D Traveler 6807
 Dixie Erica of C H 1019
 Sodak Precison 707-97
 Sodak Travett 3002

BW	86
ADJ 205	584
WWR	101

#O C C Emblazon 854E
S R Travett 501
 #S R Travett 105

CE	BW	WW	YW	Milk	Dam's Production
5	1.5	40	65	17	7/100

Virgin 2-year-old. S R Rangefinder 730 4117's Pathfinder grand-dam was one of the most powerfully constructed cows to ever walk in our pastures. She was deep-bodied, massively made and had a beautiful udder. His dam, S R Travett 501 was an easy-fleshing cow with the same qualities. This bull offers power, growth, maternal and the ability to cover a lot of cows in rugged country.

LOT 47 S R RANGEFINDER 730 4105

BD: 04/04/14 Commercial Bull

#B C C Bushwacker 41-93
S R Rangefinder 730
 M H Eldorene 712

#Paramont Ambush 2172
 R C Anita T Bando 918903
 #V D A R Lucys Boy
 M H V D A R Eldorene 410
 #Sitz Traveler 8180
 Sitz Everelda Entense 1137
 #G D A R Traveler 044
 Sitz Elsiemere 737

BW	74
ADJ 205	543
WWR	96

#Sitz Alliance 6595
#Sitz Elsiemere 331
 Sitz Elsiemere 1909

CE	BW	WW	YW	Milk	Dam's Production
0	2.8	38	69	23	

Virgin 2-year-old. A nicely constructed Bushwacker grandson that will cover a good bunch of cows. His Pathfinder Alliance dam is also the dam of the Spickler and McCumber herdsire Sitz Rainmaker 6536. He sells as a commercial bull. His EPDs are estimated.



Sitz Rainmaker 6536 • Maternal brother to Lot 47.





**FOR OUR VALUED
BULL CUSTOMERS,
WE OFFER:**

- Free feeding after the sale.
- Free delivery within 500 miles of Strommen Ranch.
- Full 90-day breeding season guarantee.
- Freeze branded.
- Fertility tested.
- Bulls that aren't overfed.
- Discounts for volume purchases and repeat buyers
- Your satisfaction is our top priority.



THANKS FOR YOUR INTEREST IN OUR CATTLE!
WE LOOK FORWARD TO SEEING YOU FEB 27, 2016

These proven, balanced, female-makers are the backbone of our cowherd.



LT BANDWAGON 3105



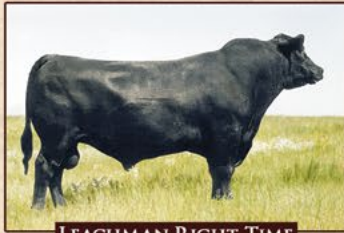
N BAR EMULATION EXT



OCC EMBLAZON 854E



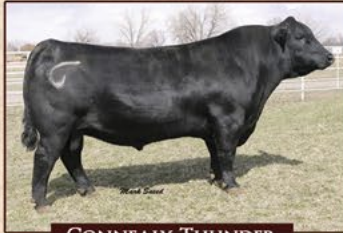
OCC GREAT PLAINS 943G



LEACHMAN RIGHT TIME



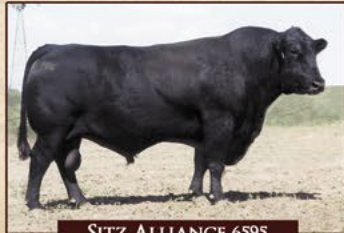
GDAR GAME DAY 449



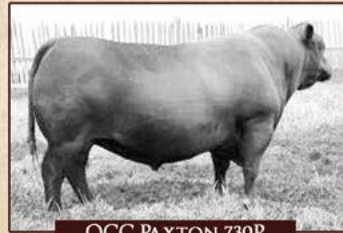
CONNEALY THUNDER



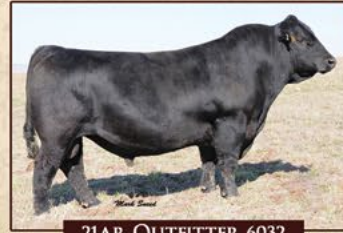
BCC BUSHWACKER 41-93



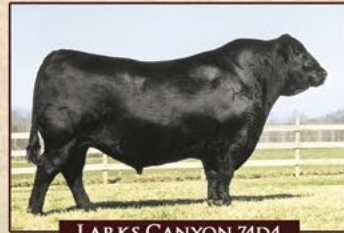
SITZ ALLIANCE 6595



OCC PAXTON 730P



ZIAR OUTFITTER 6032



LARKS CANYON 74D4

Our herd dates back to 1942 when Aaron's grandfather, Ernest Strommen, bought his first registered Angus female. His herd consisted of moderate-framed, highly-fertile, low-input cattle that calved with little assistance and produced good milk in a grass-based environment.

In March, we will calve 280 head, including 120 commercial females used in our embryo transplant program. Our Angus females have been selected for their fleshing ability on native range, fertility, longevity and sound udder and leg structure. Our cattle must survive – and thrive – in a low-input, grass-based environment of the Northern Plains.

We have no feed base and choose to not put up feed. Every acre of this ranch is grazed and we purchase all of the supplemental feed we need to get through a typical North Dakota winter. We don't use corn silage or liquid supplements.

This situation has quickly taught us the value of managing our natural resources so that our cattle can graze quality, unharvested forages well into the winter. It has reinforced the value we place on cattle that successfully convert grass and forage into pounds of beef.

We invite you to join us for our Angus Bull Sale, Feb. 27, 2016, starting at 3 p.m. at the ranch, Fort Rice, ND. The bulls will be on display and are available for viewing at the ranch anytime.



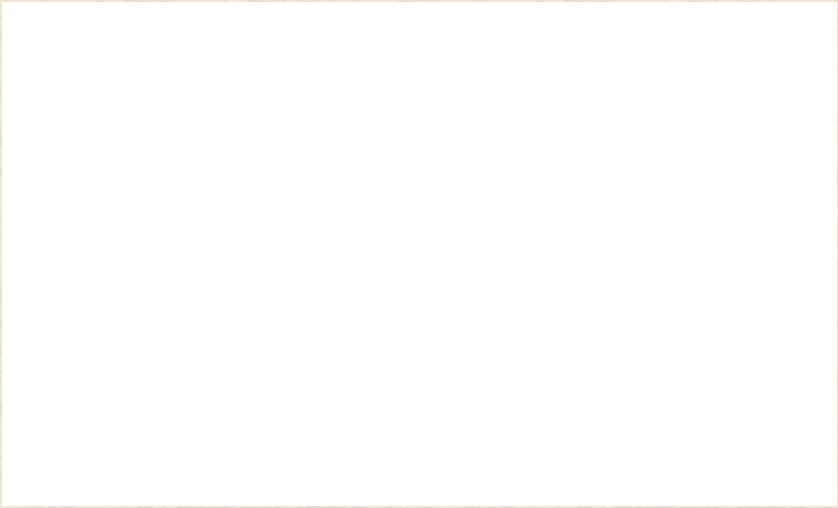
Visitors are always welcome! Videos and catalog will be posted online.

Aaron & Sheyna Strommen • 701-290-7983 (Cell) • 701-445-2020 (Home) • www.StrommenRanch.com

f Connect with us on facebook: www.facebook.com/StrommenRanch



Aaron & Sheyna Strommen
6485 County Road 80
Fort Rice, ND 58554



Hard working, moderate-framed, easy-fleshing, maternally oriented ANGUS cattle.

ANGUS BULL SALE
FEB. 27, 2016 • 3 P.M.
AT THE RANCH ~ FORT RICE, N.D.

Selling
45 YEARLING &
2-YEAR-OLD
ANGUS BULLS



Your Strommen Ranch purchase includes:

- Free feeding after the sale.
- Free delivery within 500 miles of Strommen Ranch.
- Fertility tested.
- Full 90-day breeding-season guarantee.
- Freeze branded.
- Bulls that aren't overfed.
- Discounts for volume purchases & repeat buyers
- Your satisfaction is our top priority.



VIDEOS OF THE BULLS ARE AVAILABLE ON OUR WEBSITE

WWW.STROMMENRANCH.COM

Ranch: (701) 445-2020

Aaron: (701) 290-7983