

When an emergency strikes you need quick, reliable and expert care.....

We are here for you.

But we need your help.

Your paid membership is essential to ensure we can continue to provide life saving service to you and your loved ones. We have the most highly trained personnel and best equipment. Our success is because of your support.

Your membership saves you money by taking the place of non-covered medically necessary expenses. But just as important it helps us purchase vital equipment and training so that we are there in your time of need. Please remember we are not a tax supported service and we rely on you to maintain the high quality service our community needs.

Protect your family and subscribe today!

**Paying by Credit Card?**

No Problem!

Call Today



## Shippensburg Area Emergency Medical Services

“Your Hometown Ambulance”

711 E. Orange St  
P.O. Box 69  
Shippensburg, PA 17257

Emergency Call **9-1-1**

Headquarters (717) 532-6069

### Our Commitment to You

Our team stands ready to answer your call 24 hours a day seven days a week. Comprised of career and volunteer members we have dedicated ourselves to providing the best possible care to you and your loved ones. Please help by partnering with us to ensure we can always be there for you.

**WWW.SA-EMS.ORG**



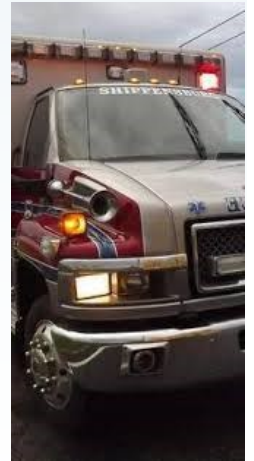
## ARE YOU PROTECTED??

2017

### Membership Program

Now more than ever it is vital that you and your loved ones are financially protected for medical emergencies.

For only a \$75 contribution **everyone** in your household can be covered until December 31, 2017



*Help us help you. Please return your completed membership today!*

## During an emergency the last thing you want to worry about is a bill.....

Our membership program helps you avoid the skyrocketing cost of medical care.

I have insurance, why should I subscribe?

Most insurance companies do not pay 100% of ambulance costs. In addition to your deductible or co-pay you could be responsible for charges exceeding \$1000 per transport. Your \$75 contribution ensures you will not be responsible for any medically necessary medical care provided by our service.

How does it work?

We will bill your insurance company for the cost of your care. We will then accept their payment and you are not responsible for any charges not covered. Whether the balance is \$100 or \$10,000 you have the peace of mind in knowing you are protected.

What if I don't subscribe?

We will bill your insurance for any services provided. After receiving payment you will be responsible for any outstanding portion. As many insurance companies have a limited ambulance benefit the cost of one transport could pay your membership for years to come.....

## What does it cost for Shippensburg Area EMS to operate?

We want to provide you with the very best service. Providing healthcare service is very expensive, and we rely exclusively on your support. Every year insurance reimbursements decline. In fact Medical Assistance has not increased ambulance reimbursement since 2004.

-A new ambulance is \$200,000

-A cardiac monitor is \$47,000

-A new paramedic costs \$10,000 to train

This is why we need YOUR help to keep our community safe. Your membership provides vital funding to help ensure we can maintain the training and equipment needed to protect you and your loved ones.

## The emergency may be over but you still need to get your life back in order

Our subscription program helps you by eliminating out of pocket expenses for **medically necessary ambulance transport**. You will also receive generous discounts on non emergency routine transports and on scene only care (in the event you elect not to be transported). After the emergency the last thing you want to worry about is the cost. Let us help you by taking care of these expenses through our affordable subscription program.

## Who are We?

We are husbands and wives. Grandparents and grandchildren. Students and teachers. Neighbors.

But most important we are your professional EMS team dedicated to providing you the best possible service. We have committed ourselves to countless hours of training, raised funds to purchase the best equipment and taken time from our families so that we can answer your call.



*Our volunteer and career staff stand ready. Night or day we are committed to your safety.*