

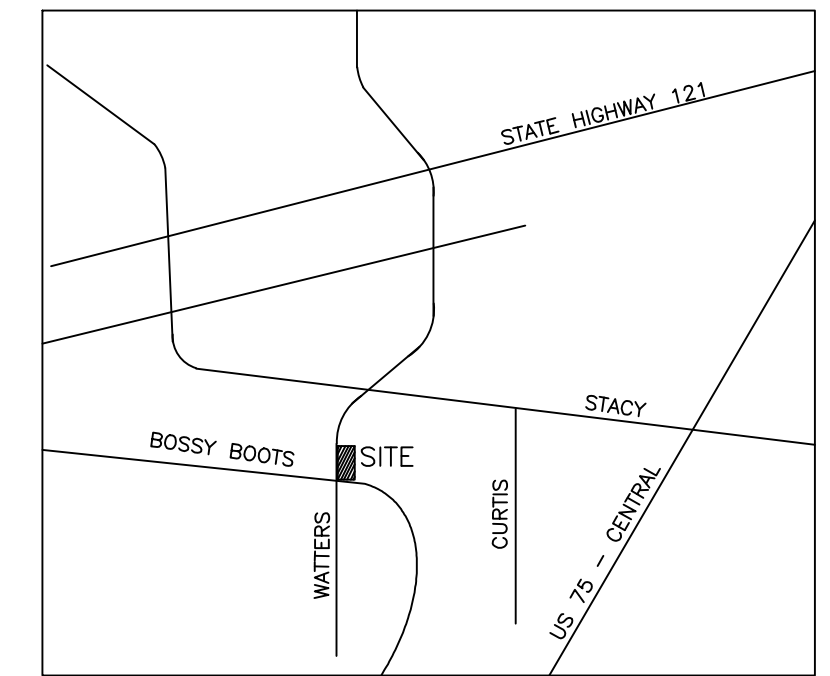
# RADHA KRISHNA TEMPLE

CITY OF ALLEN TEXAS 75013-8042

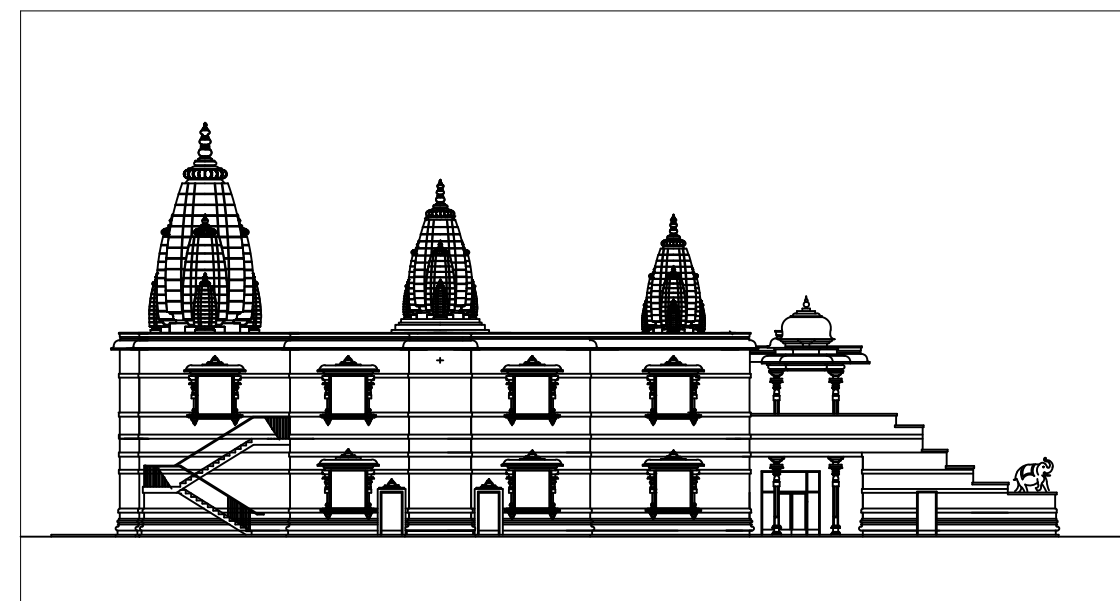
DATE : NOVEMBER 5, 2015

REVISED AS PER CITY OF ALLEN REVIEW COMMENTS DATED 10/28/2015

RELEASE FOR CONSTRUCTION



SITE LOCATION MAP



APPROVED J K YOG. PLANO TEXAS 75025

DATE : \_\_\_\_\_

AND BY : \_\_\_\_\_

ACCEPTED BY : \_\_\_\_\_

## CODE DATA

<b>PROJECT ADDRESS :</b>	WATTERS ROAD AND BOSSY BOOTS DRIVE ALLEN TEXAS 75013	<b>USE &amp; GROUP - PER SECTION 303</b>	ASSEMBLY GROUP - A-3 CHURCH	<b>BUILDING DATA:</b>	COMMUNITY FACILITY
<b>PROPOSED USE:</b>	A-3 CHURCH	<b>BUILDING HEIGHT - MAX.</b>	68'-9"	<b>ZONING:</b>	N/A
<b>OWNER:</b>	RADHA KRISHNA TEMPLE ALLEN TEXAS 75013	<b>AREA PER FLOOR -</b>	8,712 SQ PER FLOOR	<b>OCCUPANCY:</b>	N/A
<b>ARCHITECT:</b>	SHASHI D. PATEL AIA NCARB 442 EAST END AVE. SUITE-B PITTSBURGH, PA 15221	<b>FIRE ALARM &amp; DETECTION -</b>	YES	<b>CONSTRUCTION TYPE:</b>	TYPE II - B
<b>STRUCTURAL:</b>	P. J. PATEL PE DTE DESIGN AND CONSULTING ENGINEERS. 1503 LAMONT DRIVE GIBSONIA, PA 15044	<b>NUMBER OF OCCUPANTS -</b>	420 + BASED ON IBC GUIDE LINES	<b>SQUARE FOOTAGE:</b>	17,424' SQ FT
<b>CIVIL:</b>	RANDALL T. HELMBERGER PE HELMBERGER ASSOCIATES INC. 1525 BOZMAN ROAD, WYLIE TEXAS 75098	<b>MAXIMUM OCCUPANTS (INCLUDING SANCTUARY) -</b>	420	<b>PARKING:</b>	PUBLIC AREA IN TEMPLE FOR PRAYER ASSEMBLY = 420 OCCUPANTS
<b>MECHANICAL &amp; ELECTRICAL:</b>	M A WAHEED PE WAHEED CONSULTING 420 PARKSIDE COURT MURPHY TEXAS 75094	<b>EGRESS WIDTH DOORS -</b>	100 INCHES (02')	<b>PARKING REQUIRED:</b>	92 SPACES
<b>LANDSCAPE:</b>	WILLIAM SHARP SHARP LANDSCAPES 1129 HUNTING DRIVE, RICHARDSON TEXAS 75080	<b>REQUIRED EGRESS FOR MAXIMUM OCCUPANTS -</b>	144 INCHES	<b>SPACES PROVIDED HANDICAPPED:</b>	6 SPACES
<b>FIRE PROTECTION:</b>	AUTOMATIC FIRE SPRINKLER SYSTEM	<b>EGRESS WIDTH PROVIDED -</b>	144 INCHES	<b>FIRE PROTECTION:</b>	COMPLY WITH NFPA R-13 AND CITY OF ALLEN FIRE CODE REQUIREMENTS
		<b>ACCESSIBLE MEANS OF EGRESS STAIRWAY &amp; HANDRAIL -</b>	(IBC-2009) (IBC-2003) LESS THAN 75'-0"	<b>BUILDING ENVELOPE:</b>	EXTERIOR WALL (R7.5 MIN. INSULATION SHEATHING) ROOF: R-20 MIN. CI RIGID INSULATION
		<b>EXIT ACCESS TRAVEL DISTANCE -</b>	LESS THAN 75'-0"		
		<b>STAIRWAY &amp; HANDRAIL -</b>	(IBC-2009) (IBC-2003) LESS THAN 75'-0"		
		<b>STRUCTURAL LOADS -</b>	IBC-2009 ASCE-7 SEE STR. DRAWINGS		
		<b>PLUMBING CODES -</b>	2009 UPC SEE DRAWINGS		
		<b>ELECTRICAL CODES -</b>	NEC SEE DRAWINGS		

## LIST OF DRAWINGS - PHASE - I

- SITE DEVELOPMENT  
SEE COVER SHEET BY HELMBERGER ASSOCIATES LLC.
- LANDSCAPE DESIGN  
SEE LANDSCAPE DESIGN BY SHARP LANDSCAPES.
- SITE PHOTOMETRIC DESIGN  
SEE SD-1 SITE PHOTOMETRICS BY WAHEED CONSULTANTS MEP

## ARCHITECTURAL

- CS-1 COVER SHEET
- A-1 FIRST FLOOR PLAN
- A-2 SECOND FLOOR PLAN
- A-3 EAST AND SOUTH ELEVATIONS
- A-4 WEST AND NORTH ELEVATIONS
- A-5 ROOF PLAN AND DETAILS
- A-6 BUILDING CROSS SECTIONS
- A-7 BUILDING LONGITUDINAL SECTIONS
- A-8 FIRST FLOOR REFLECTED CEILING PLAN
- A-9 SECOND FLOOR REFLECTED CEILING PLAN
- A-10 ROOM FINISHES AND DOOR SCHEDULE
- A-11 WALL SECTIONS WITH CEMENT PLASTER DECOR
- A-12 STAIR PLANS AND DETAILS
- A-13 ELEVATOR-KITCHEN AND MISC. DETAILS
- A-14 ADA TOILETS PLANS ELEVATIONS AND DETAILS
- A-15 TOILETS PLANS ELEVATIONS AD DETAILS
- A-16 SHIKHAR GAZEBO SECTIONS AND DETAILS
- A-17 TECHNICAL SPECIFICATIONS

## STRUCTURAL

- S0.0 STRUCTURAL COVER SHEET
- S0.1 STRUCTURAL GENERAL NOTES
- S0.1A STRUCTURAL GENERAL NOTES AND ABBREVIATIONS
- S0.2 MISCELLANEOUS SECTIONS
- S0.2A MISCELLANEOUS SECTIONS
- S0.3 TYPICAL FRAMING SECTIONS
- S1.0 FOUNDATION AND FIRST FLOOR PLAN
- S2.0 SECOND FLOOR FRAMING PLAN
- S3.0 ROOF FRAMING PLAN
- S3.0A WIND PRESSURE DIAGRAM
- S3.0B SNOW DRIFT LOAD DIAGRAM
- S4.0 FOUNDATION SECTIONS & DETAILS
- S4.1 FOUNDATION SECTIONS & DETAILS
- S5.0 FLOOR FRAMING SECTIONS & DETAILS
- S5.1 FLOOR FRAMING SECTIONS & DETAILS
- S6.0 ROOF FRAMING SECTIONS & DETAILS
- S6.1 ROOF FRAMING SECTIONS AND DETAILS
- S7.0 ELEVATOR PLAN, SECTIONS & DETAILS
- S8.0 SCHEDULES AND DETAILS
- S9.0 LARGE SHIKHAR STEEL FRAMING PLANS & ELEVATION
- S10.0 MEDIUM SHIKHAR STEEL FRAMING PLANS & ELEVATION
- S11.0 SMALL SHIKHAR STEEL FRAMING PLANS & ELEVATION
- S12.0 TILT-UP PANEL PLAN AND ELEVATIONS
- S12.1 TILT-UP PANEL ELEVATIONS

## MECHANICAL

- M-1 FIRST FLOOR HVAC PLAN AND DETAILS
- M-2 SECOND FLOOR HVAC PLAN AND RTU SCHEDULE
- M-3 KITCHEN EXHAUST PLAN AND DEVICES SCHEDULE

## PLUMBING

- P-1 FIRST FLOOR PLUMBING PLAN AND ISOMETRIC
- P-2 SECOND FLOOR PLUMBING PLAN
- P-3 ROOF PLUMBING PLAN
- P-4 WATER AND GAS RISER PLAN

## ELECTRICAL

- SD-1 SITE LIGHTING PLAN
- E-1 FIRST FLOOR LIGHTING PLAN
- E-2 SECOND FLOOR LIGHTING PLAN
- E-3 FIRST FLOOR POWER PLAN
- E-4 SECOND FLOOR POWER PLAN
- E-5 ELECTRICAL RISER AND PANEL SCHEDULE

## FIRE PROTECTION TO BE SUBMITTED

- FP-1 FIRST FLOOR SPRINKLER PLAN
- FP-2 SECOND FLOOR SPRINKLER PLAN

SHASHI D. PATEL AIA. NCARB.  
442 EAST END AVENUE SUITE-B PITTSBURGH PA 15221

TIM KONGANDA, AIA.  
3102 MAPLE AVENUE SUITE 400 DALLAS TX 75201

HELMBERGER ASSOCIATES, INC.  
1525 BOZMAN ROAD, WYLIE TEXAS 75098

P J PATEL PE  
1503 LAMONT DRIVE GIBSONIA PA 15044

WAHEED CONSULTING  
420 PARKSIDE COURT MURPHY TEXAS 75094

ARCHITECTS AND PLANNERS

CONSTRUCTION MANAGER  
EPSILON ARCHITECTURE

CIVIL AND ENVIRONMENTAL ENGINEERS

CONSTRUCTION MANAGER/STRUCTURAL ENGINEERS

MEP SYSTEM DESIGN ENGINEERS.