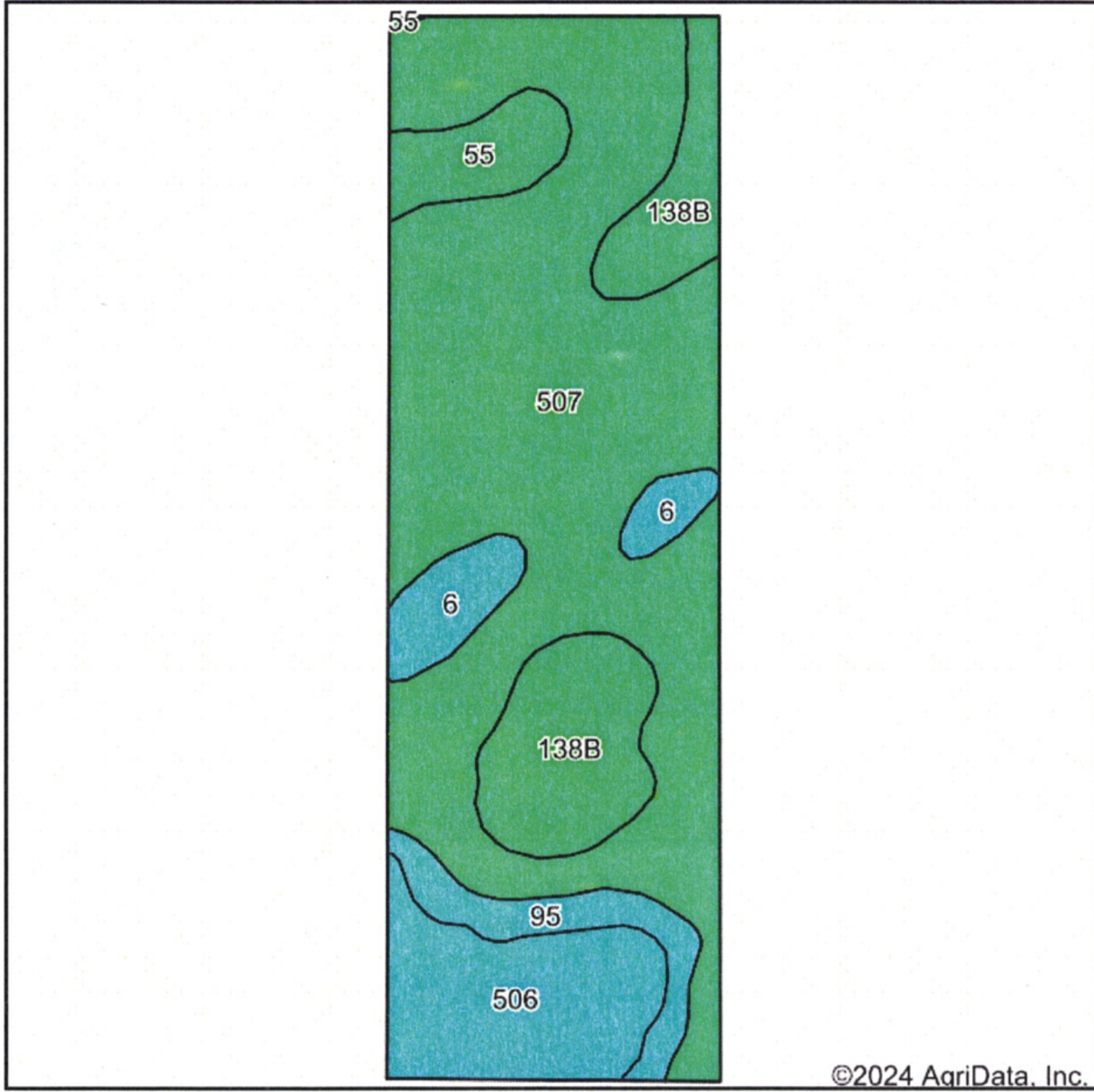
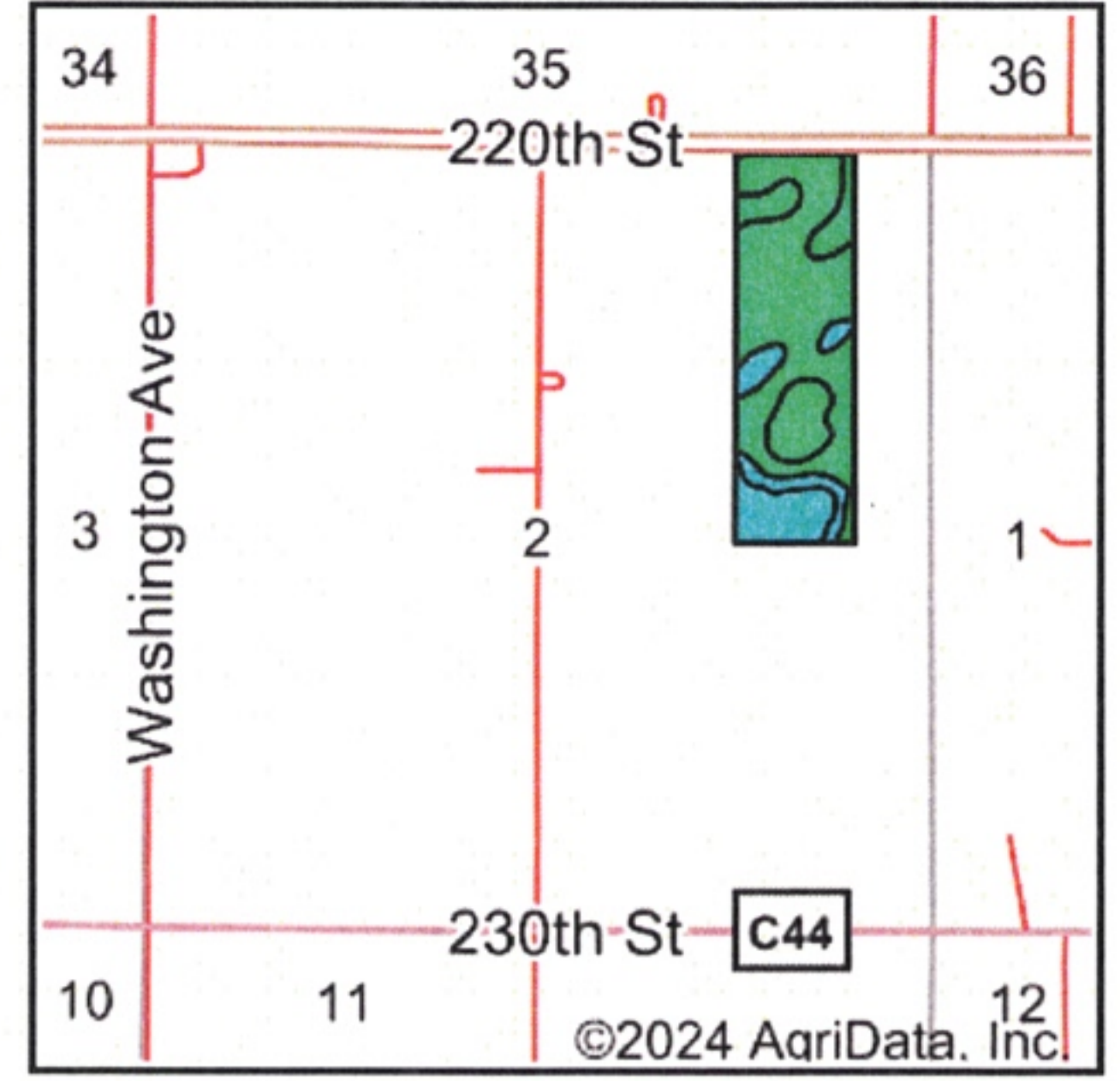


Soils Map



Soils data provided by USDA and NRCS.



State: **Iowa**
 County: **Humboldt**
 Location: **2-91N-27W**
 Township: **Norway**
 Acres: **49.47**
 Date: **8/2/2024**



Area Symbol: IA091, Soil Area Version: 29

Code	Soil Description	Acres	Percent of field	CSR2 Legend	Water Table	Restrictive Layer	Septic Limits	Foundation Limits	Non-Irr Class *c	CSR2**	CSR	*n NCCPI Soybeans
507	Canisteo clay loam, 0 to 2 percent slopes	30.08	60.9%		0ft.	> 6.5ft.	very limited	very limited	IIw	84	78	81
138B	Clarion loam, 2 to 6 percent slopes	6.73	13.6%		2.9ft.	> 6.5ft.	very limited	somewhat limited	Ile	89	80	83
506	Wacousta silty clay loam, depressional, 0 to 1 percent slopes	5.85	11.8%		0ft.	> 6.5ft.	very limited	very limited	IIIw	69	74	79
6	Okoboji silty clay loam, 0 to 1 percent slopes	2.38	4.8%		0ft.	> 6.5ft.	very limited	very limited	IIIw	59	57	74
95	Harps clay loam, 0 to 2 percent slopes	2.34	4.7%		0ft.	> 6.5ft.	very limited	very limited	IIw	72	62	82
55	Nicollet clay loam, 1 to 3 percent slopes	2.09	4.2%		1.5ft.	> 6.5ft.	very limited	very limited	Iw	89	88	81
Weighted Average									2.12	81.3	76.5	*n 80.7

**IA has updated the CSR values for each county to CSR2.

*n: The aggregation method is "Weighted Average using all components"

*c: Using Capabilities Class Dominant Condition Aggregation Method

Soils data provided by USDA and NRCS.