

TENOR Trombone

Composed by Dr. Eric Richards 2014

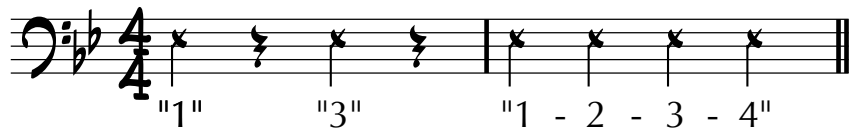
Glenn Korff School of Music @ UNL

<http://music.unl.edu/eric-richards>

# NMEA All State Jazz Audition ETUDE A1 - SHUFFLE

*Shuffle* (Swing 8ths): M.M. ♩ = 144

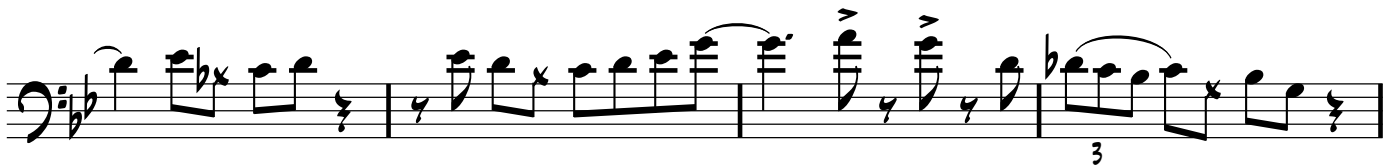
COUNTOFF:



INTRO (Organ)



ETUDE



2 **NMEA All State Jazz Audition Etude 1A - SHUFFLE** - TENOR Trombone

**IMPROVISE!**

Chord progression for the first system:

- Measure 1: Gmi9
- Measure 2: /
- Measure 3: /
- Measure 4: /
- Measure 5: /
- Measure 6: /
- Measure 7: /
- Measure 8: /
- Measure 9: G7(#9)

Chord progression for the second system:

- Measure 1: Cmi7
- Measure 2: /
- Measure 3: /
- Measure 4: /
- Measure 5: /
- Measure 6: Gmi9
- Measure 7: /
- Measure 8: /
- Measure 9: /

Chord progression for the third system:

- Measure 1: Eb13(b5)
- Measure 2: /
- Measure 3: D7(#9)
- Measure 4: /
- Measure 5: /
- Measure 6: Gmi11
- Measure 7: /
- Measure 8: D7(#9)
- Measure 9: /

**2nd CHORUS**

Chord progression for the first system of the 2nd Chorus:

- Measure 1: Gmi9
- Measure 2: /
- Measure 3: /
- Measure 4: /
- Measure 5: /
- Measure 6: /
- Measure 7: /
- Measure 8: /
- Measure 9: G7(#9)

Chord progression for the second system of the 2nd Chorus:

- Measure 1: Cmi7
- Measure 2: /
- Measure 3: /
- Measure 4: /
- Measure 5: /
- Measure 6: Gmi9
- Measure 7: /
- Measure 8: /
- Measure 9: /

Chord progression for the third system of the 2nd Chorus:

- Measure 1: Eb13(b5)
- Measure 2: /
- Measure 3: D7(#9)
- Measure 4: /
- Measure 5: /
- Measure 6: Gmi11
- Measure 7: /
- Measure 8: /
- Measure 9: /