

**State Farm®**  
 Providing Insurance and Financial Services  
 Home Office, Bloomington, Illinois 61710

**Lynne Crittenden CPCU, Agent**  
 1007-B Main Street  
 Altavista, VA 24517  
 Bus: 434-369-4782 Toll Free: 866-369-4782  
 lynne.crittenden@statefarm.com

24 Hour Good Neighbor service®

**"Quality Service Year Round!"**  
**TRI-COUNTY MARINA, INC.**  
 Between Lake Mile Marks 4 & 5

1261 Sunrise Loop  
 Lynch Station, VA 24571  
**(434) 369-5126**

**Bradner, Farmer, Towler & Associates, Inc.**  
 REAL ESTATE & HOMEOWNERS ASSOCIATION

**Janice B. Arthur**  
 ABR, REALTOR

Office: (434) 369-9146  
 Fax: (434) 369-9147  
 P.O. Box 28  
 6202 Main Street  
 Altavista, VA 24517  
 Cell: (540) 263-0646  
 Email: jartur@brfasociates.com  
 www.brfasociates.com

**FIRST NATIONAL MORTGAGE**  
 A DIVISION OF FIRST NATIONAL BANK OF ALTAVISTA

622 Broad Street  
 P.O. Box 28  
 Altavista, VA 24517

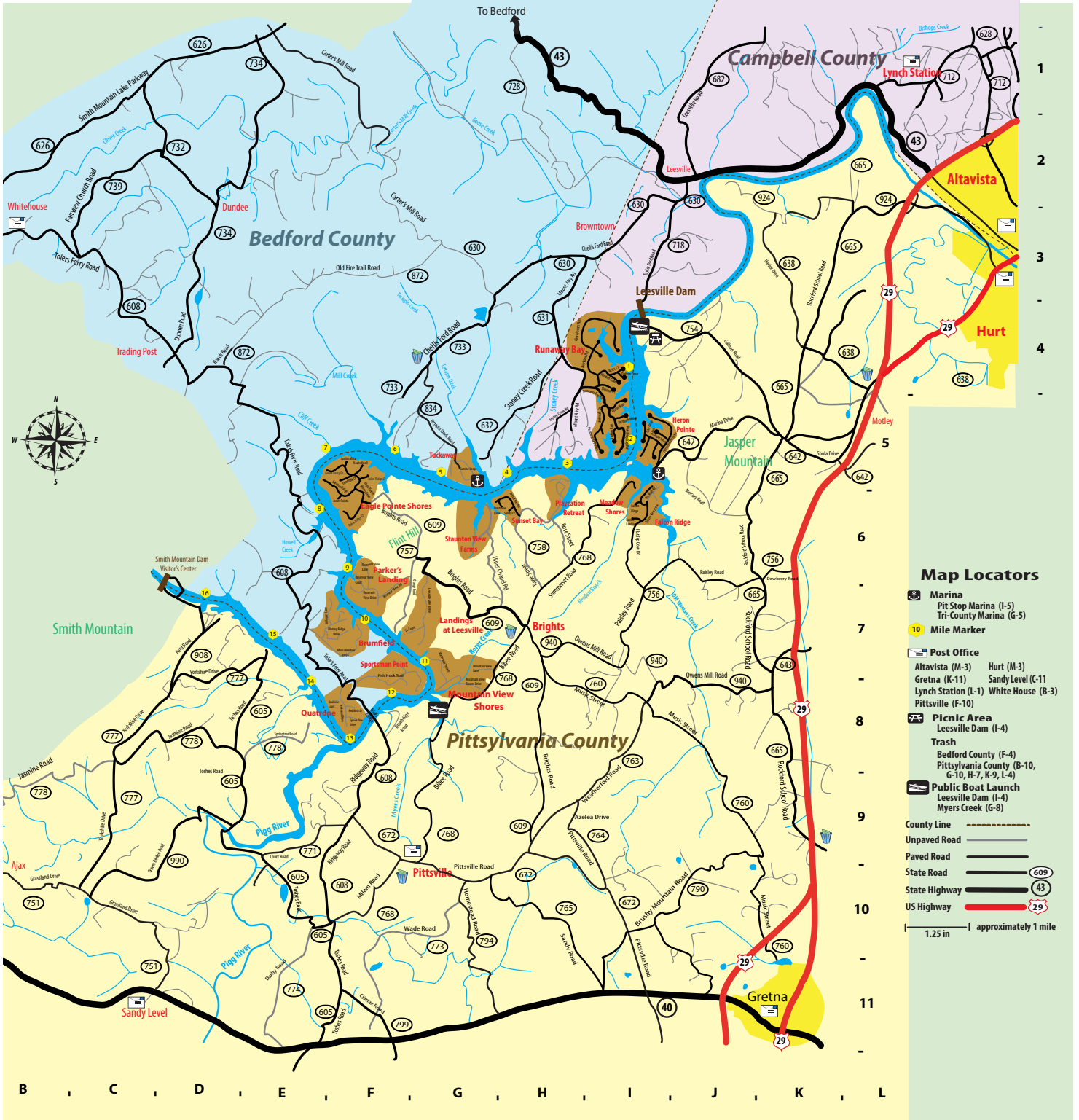
**Brenda M. Eades**  
 Assistant Vice President  
 Mortgage Loan Officer

(Phone) (434) 369-3058  
 (Fax) (434) 309-7255  
 (e-mail) brendaeades@1stnatbk.com

**LAURELTON GREENHOUSES & GARDENS**  
 WWW.LAURELTON.COM

1311 SUMMERSET RD. GRETTNA, VA 24557  
 434-656-3302

504 PITTSYLVANIA AVE. ALTAVISTA, VA 24517  
 434-369-7242



Please visit our website: [www.lesvillelake.org](http://www.lesvillelake.org)  
 If you would like to advertise in the next addition of this brochure, please contact: Leesville Lake Association, PO Box 68, Altavista, VA 24517

**ENGLISH'S**  
 since 1909  
**"The Complete Home Center"**

1522 Main Street  
 Altavista, VA 24517

Hours: Mon-Fri 7:00 - 5:00  
 SAT: 8:00 - 12:00  
 Phone: (434) 369-4771

**FALWELL CORPORATION**  
 WELL DRILLING/INSPECTIONS  
 WATER SOFTENER FILTRATIONS SYSTEMS  
 COMMERCIAL PLUMBING

Phone: 434/846-2737 Fax: 434/846-2740  
 Or Toll Free at 1-800-937-9355

3900 Campbell Avenue • Lynchburg, Virginia 24501

**Jeff's Tire & Auto Center, Inc.**  
 Jeff & Whitey Perkins  
 P.O. Box 1175 Gretna, VA 24557

New Tires • Front End Alignment  
 Lube • Oil Change • Brake Service  
 Muffler & Pipe Service • State Inspections

608 West Vaden Drive Gretna Phone: 434-656-3475  
 OR 434-656-3575

Susan & Jim Hunt  
**Taylor Flower Shop**  
 A Full Service Florist  
 1-800-315-2499

318 S. Main Street  
 P.O. Box 497 • Gretna, VA 24557 • 434-656-2258

**ALTAVISTA ANIMAL HOSPITAL, INC.**  
 DR. SANDRA E. BULLINS  
 DR. STEPHANIE A. CHMIEL  
 434-369-7033

OFFICE HOURS: Mon-Fri 7:00-5:30  
 TT 7:00-7:00  
 SAT 8:00-12:00

EMERGENCY: (or After Hours)  
 434-846-1504

**Potate Construction**  
General Contractor

434-441-0082

- Commercial Buildings
- Residential Buildings
- Aluminum Docks by FSI

www.potateconstruction.com  
www.aluminumboatdocks.com

... Serving all of our lakeside needs since 1971 ...

**JTD CONSTRUCTION**  
JT Dinkie  
Office 540-587-4042  
Mobile 434-641-7235  
e-mail jtdinkie@go.com

1059 Saddle Club Dr. • Goods, VA 24556

**Saint Victoria Catholic Church**  
P.O. BOX 640 Hurt, Virginia 24563-0640  
Church: 434-324-4824  
Father James E. Gallagher, Jr.  
Sunday Mass: 11:00 a.m.  
Confessions: First Sunday of the month after Mass  
Weekday Masses: Wednesday and Thursday 10:00 a.m.

**LAW OFFICES  
J. JOHNSON ELLER, JR.**

ALL LEGAL SERVICES, SPECIALIZING IN REAL ESTATE SETTLEMENT SERVICES  
-WE KNOW THE LAKES-

P. O. Box 209  
712 Main Street  
Altavista, VA 24517

Phone: (434) 369-5661  
Fax: (434) 369-5663

"With Your dreams and our skills, the possibilities are endless!"

**HENSON CONSTRUCTION**  
Custom Homes and Docks  
540.529.1947  
www.HENSONBUILT.com  
434.656.2636 - Office

We also offer:  
General Excavating  
Home Improvement  
Shoreline Management  
Septic System Installations

**Eagle Pointe Shores**  
1-877-838-LAKE (5253)  
www.eaglepointeshores.com

**Accommodations**  
Best & Breakfasts  
L'Ermitage B&B, Bedford 540-587-5353  
Liberty House Inn B&B, Bedford 540-587-0966  
Love Stone Inn, Hudstonville 540-286-5610  
Nightingale B&B, Gretna 434-656-6327  
Otera's Ten B&B, Bedford 540-586-2204  
The Inn at Tiwim, Goods 540-586-8113  
Campgrounds  
Running Cedar RV Resort, Motley 888-6VA-CAMP  
Tuckaway Camp Grounds, Lynch St. 434-369-5126  
Motels  
Budget Inn, Bedford 540-486-8182  
Comfort Suites, Altavista 434-369-4000  
Days Inn, Bedford 540-586-9296  
Holiday Inn Express, Altavista 434-369-4070  
Super 8, Bedford 540-587-0100  
Attractions  
AEP Dam Visitor Center 540-885-2897  
Anova Museum, Altavista 434-369-1076  
Bedford Museum 540-586-4520  
Blue Ridge Parkway 828-298-0398  
National D-Day Memorial, Bedford 540-586-3329  
Smith Mountain Lake State Park 540-297-6066  
Thom. Jefferson's Poplar Forest, Forest 434-525-1806  
Banks/Mortgage/Financial/Legal  
Altavista Loan Co. Altavista 434-369-5624  
American National B & T, Gretna 4347656-1246  
Amston Mortgage Co. Altavista 434-369-1050  
Bedford Federal S. & L. 540-586-2590  
BBK, Altavista 434-369-5671  
Carter Bank & Trust, Bedford 540-586-3192  
Carter Bank & Trust, Gretna 434-656-2201  
Central Fidelity Bank, Gretna 434-370-2351  
Colonial Home Mortgage, Gretna 434-927-4444  
First Citizens B & T, Bedford 540-586-8215  
First National Bank of Altavista 434-369-3000  
First National Bank, Altavista 434-369-3001  
First National Bank, Bedford 540-586-2590  
First Union, Bedford 540-586-8292  
Law Offices of J. Johnson Eller, Jr. 434-369-4760  
Pinnacle Bankshares Corp, Altavista 434-369-3000  
Sun Trust Bank, Bedford 540-586-0970  
Wachovia Bank, Altavista 434-369-4760  
Wachovia Bank, Bedford 540-586-8292  
Woodforest National Bank, Altavista 434-309-1038

**Boat Sales & Service**  
All Seasons Marine Services, Hudstonville 540-297-7943  
Boats for Sale by Owner, Moneta 540-439-7070  
Bridgeside Marine, Moneta 540-719-2628  
Conrad Brothers Marine, SML 540-721-5017  
Hughes Marine, Bedford 434-636-0552  
J.B. Tanhill, Lynch Station 434-369-5126  
Magnum Boating Center, Union Hill 540-576-7192  
Pete's Boat Barn, Hurt 434-324-8009  
Sherr's Boat Services, Hudstonville 540-297-7223  
Shoreline Marina, Moneta 540-721-3664  
Smith Mountain Boat Tackle, Penhook 540-576-2755  
South Lake Marina, Union Hill 540-576-5919  
Virgil Naff Seadoo, Lynchburg 434-628-0462  
Webster Marine, SML 540-297-5228

**Construction/Dock Builders**  
Docks by Design, Penhook 544-546-1297  
Henson Construction 540-529-1947  
JTD Construction, Goods 540-587-4042  
J & W Hauling & Grading LLC 434-821-2522  
Lakeside Services & Property Mgmt 434-632-9391  
Moxley Construction Co., Inc. 278-650-2959  
Plum-Rite Plumbing Services 434-369-4475  
Potate Construction 434-441-0082  
**County Offices**  
Bedford: www.co.bedford.va.us 540-586-7690  
Animal Control Shelter 540-586-7611  
Building Permits & Inspections 540-586-7611  
Health Department 540-586-7952  
Campbell: www.co.campbell.va.us 434-592-9541  
Animal Control Shelter 434-592-9541  
Building Permits & Inspections 434-592-9525  
County Administrator 434-592-9525  
Health Department (Environ. Health) 434-592-9550  
Pittsylvania: www.pittgov.org 434-432-7931  
Animal Control 434-432-7755  
Building Permits & Inspections 434-432-7710  
County Administrator 434-432-7232  
Health Department (Environ. Health) 434-432-7232

**LEESVILLE AND SMITH MOUNTAIN LAKES**

**History of the Area:**  
The land in the Smith Mountain vicinity is steeped in history, and the river on which the dams and lakes are located has played a major role in it. Years ago, members of the Algonquin tribe migrated south from Canada into North Carolina, settling the Roanoke River along the way. They found a good place to fish and hunt. Settlers arriving after the Indians found it so, too. First to enter the area, John Lederer, wrote in 1670, as did others who followed, of an infinite quantity of animals to hunt, of the low and very rich ground, of large meadows and savannas.

A great migration to the area began in 1730. The Virginia Assembly promised ten tax-free years to those who would settle along the river, and naturalization for all settlers. Daniel and Catherine Smith, arrived in 1740 and are forever remembered by the mountain named for their family.

During the years the river has been called several names, from Moratuck in the 17<sup>th</sup> Century to the present official dual name, Roanoke (Staunton) River, from the point where Franklin, Bedford and Roanoke Counties meet, downstream to the John H. Kerr Dam on the North Carolina border. The name "Roanoke" is said to have originated from an Algonquin word for shell "money." The name Staunton comes from Captain Henry Staunton who, before the Revolutionary War, commanded a company of soldiers to protect early settlers from Indian attacks. The soldiers patrolled from the mountains to the mouth of the Dan River.

Appalachian Power Company and its predecessor companies were interested in the gap in Smith Mountain as the site of a hydroelectric project as far back as 1924, but until pumped storage became feasible it would not be economically justified. Construction of the Smith Mountain Development began in 1960. Smith Mountain is the first Appalachian project to utilize the pumped storage concept. In pumped storage, water does double duty. It passes from the upper lake through turbines of Smith Mountain Dam into the lower lake. Some of this water passes through the turbines of the lower dam at Leesville, but a portion is retained in the lower lake. Then at night,



**Electric Service**  
American Electric Power, Lynchburg 877-237-2886  
Mecklenburg Electric Co-Op, Gretna 434-656-1288  
Southeast Electric Cooperative, Altavista 800-552-2118

**Fire/Aid/Medical Care**  
Bedford Memorial Hospital 434-309-1165  
Bedford Memorial Hospital 540-587-3246  
Cent. VA. Fam Phys Urgent Care, Gretna 434-945-4175  
Central Health Medical Center, Gretna 800-622-1222  
East Lake Medical Center, Gretna 540-296-0534  
Danville Regional Medical Center 434-799-2010  
East Lake Medical Center 540-656-2256  
Gretna Medical Center 434-656-1251  
Lynchburg General Hospital 434-947-3000  
Roger Beaman, Realtor, Moneta 434-324-9150  
Virginia Baptist Hospital, Lynchburg 434-947-4444

**Veterinary**  
Altavista Animal Hospital 434-369-7033  
**Grocery Stores**  
Apple Mart, Gretna 434-324-4342  
Blains Grocery, Gretna 434-656-2256  
Carter's Store, Leesville 434-369-5001  
Carter's #2, Gretna 434-656-6000  
Food Lion, Altavista 434-308-1114  
G & S Market, Motley 434-324-7884  
Gretna Food Land, Gretna 434-656-2222  
One Stop Mart, Gretna 434-656-3170  
Sycamore Grocery, Gretna 434-656-6171  
Woody's Country Store, Gretna 434-656-3377  
Vista Food Service, Altavista 434-369-5409  
Wal-Mart, Altavista 434-309-2245

**Hardware/Nurseries/Building Centers**  
Altavista Lawn Care 434-283-5296  
Bedford Hardware, Bedford 540-586-8811  
Carpenter Home Bldg. Center, Bedford 540-713-2276  
English's, Altavista 434-369-4771  
Garden Path, Bedford 540-586-1544  
Jackson's Keeping, Motley 434-656-6202  
Laurelton Gardens, Altavista 434-369-7242  
Laurelton Greenhouses, Brights 434-656-3302  
Moneta Farm Service, Moneta 540-297-5558  
Northern Lites, Gretna 434-656-3100  
Peakview Landscaping, Bedford 540-586-1100  
Roanoke True Value, Altavista 434-656-2252  
Wal-Mart, Bedford 540-586-8100  
Wylee Family Farm Greenhouse, Bedford 540-587-5300

**Insurance, Homeowners**  
Altavista Insurance Corp 434-369-4723  
Bolling, Cynthia H., Nationwide, Altavista 434-369-6000  
Carter, Todd, Altavista 434-369-5066  
Crittenden, Lynne, State Farm, Alta. 434-369-5606  
Gretna Agency 434-656-3475  
Grey & Smith, Ins Agents, Altavista 434-369-1710  
Insurance Junction, Gretna 434-656-6261  
National Response Agency, Altavista 434-369-1710  
Thury Insurance Agencies, Altavista 434-369-4711  
Wholy Kimberly Insurance, Gretna 434-656-9006

**Law Enforcement**  
Bedford County Sheriff 540-586-7827  
Campbell County Sheriff 434-592-8574  
Pittsylvania County Sheriff 434-432-7931  
State Police 800-552-0962  
National Response & Terrorist Hotline 800-367-7523  
VA Dept. of Game & Inland Fisheries 434-525-7522  
**Libraries**  
Campbell County (Altavista) 434-369-5140  
Bedford Central Library 540-586-9911  
Moneta/SML Library 540-297-6474  
Pittsylvania County (Gretna) 434-656-2579  
**Marinas**  
Pit Stop Marina, Motley 434-324-9214  
Trico Marina, Lynch Station 434-369-5126  
**Miscellaneous/Other**  
Altavista Alarm Co., Altavista 434-369-5206  
Fallwell Corporation 434-846-2737  
Jeff's Tire & Auto Center 434-656-3475

STEPHANIE'S FANCY SHEARS, Grooming your pet to perfection  
Bedford is also available 210 W. Walton Rd., Hurt  
434-656-0085 (3647)

**Real Estate**  
Eston W. Johnson Auct & Real, Gretna 434-656-3150  
Agnes Dowdy & Associates, Altavista 434-369-6880  
Annette Thornhill-Realtor, Moneta 540-309-8073  
Ancher, Ray E., Gretna 434-656-2200  
Eagle Pointe Shores, Gretna 434-656-8526  
Falcon Ridge, Motley 434-324-8996  
Heron Pointe, Motley 434-369-5681  
Janice B. Arthur, BFT Assoc., Altavista 540-293-0646  
Kent Realty, Altavista 434-369-6228  
Long & Foster (Sam & Mike Skillman) 434-309-1426  
Love Real Estate, Inc. Gretna 434-656-2046  
McAdams Residential Rty, Hurt 434-327-0668  
Realty World (Annette Thornhill) 540-309-8073  
Roger Beaman, Realtor, Moneta 540-493-9391  
Shortt Auction & Realty, Altavista 434-369-6678

**Restaurants & Carry Out**  
Applebee's, Altavista 434-309-1157  
Bedford Social Club, Bedford 540-586-9454  
C & E's Restaurant, Gretna 434-656-1029  
China Wok Buffet, Altavista 434-369-8268  
Crossroads, Gretna 434-656-2351  
Dutchess Bakery & Café, Bedford 540-587-9777  
El Cazar, Altavista 434-369-7921  
Frank's Pizza & Italian, Gretna 540-586-1988  
Gabrielles, Bedford 540-586-6377  
Gingertree Café, Bedford 540-587-9780  
Main Street Cafe, Altavista 434-369-2233  
Mama Rosa's Italian, Gretna 434-656-3411  
Napoli, Altavista 434-369-9700  
Napoli's, Gretna 434-656-8667  
Old Liberty Station, Bedford 540-587-9377  
Peaks of Otter Lodge & Rest., Bedford 434-369-9908  
Ruby Tuesday, Bedford 540-587-5770  
Subway, Altavista-Main Street 434-369-2366  
Subway, Altavista-Wal-Mart 540-809-1985  
Subway, Gretna 434-656-3835  
Virginia Dare Dining Cruises, Moneta 540-297-1100  
White House Restaurant, Moneta 540-297-7104  
Yamazaki Japanese, Hurt 434-324-8288  
**Shopping/Florist/Gifts/Souvenirs**  
All Occasion Florist, Gretna 434-656-1166  
Arlene's Florist, Altavista 434-369-4200  
Emerson Green Pottery, Bedford 540-297-7884  
Family Floral & Gift Shop, Gretna 434-656-8128  
Gallery of Virginia Art & Gift, Bedford 540-586-5001  
The Gifted Era Antique Mall, Bedford 540-587-9322  
The Keeping Room, Bedford 540-866-6515  
Main Street Emporium, Altavista 434-369-2233  
Miller's Jewels, Altavista 434-369-2099  
Prissy Parrot, Bedford 540-587-5500  
Rose's, Altavista 434-369-6624  
Steve's Florist, Altavista 434-369-4200  
Tyler Flower Shop, Gretna 434-656-2258  
Wal-Mart Supercenter, Altavista 434-309-2245

**Surveyors/Planners/Engineers**  
Acres of Virginia, Inc., Lynchburg 434-628-4674  
Reynolds-Clark Development, Gretna 434-656-8961  
**Town of Altavista** 434-369-5001  
**Vineyards & Wineries**  
Chateau Morristate, Meadows of Dan 540-693-2865  
Fincastle Vineyard & Winery, Fincastle 601-900-0000  
Peaks of Otter Winery, Bedford 540-866-3707  
Tomahawk Mill, Chatham 434-432-1063

**HICKORY HILL VINEYARDS AND WINERY** - Visit our circa 1923 farmhouse winery. Family owned and operated, Hickory Hill offers visitors a quiet country setting and the chance to get away from it all. Winery and vineyard tours, complimentary wine tastings and a scenic picnic area. Thurs-Mon, 11 a.m. - 5 p.m., mid-March through mid-Dec. Open daily, Memorial Day through Labor Day. www.hickoryhillvineyards.com 540-296-1933

**Visitor Information**  
Altavista Area Chamber of Commerce 434-369-6665  
Bedford County Chamber of Commerce 540-886-9401  
Bedford Area Welcome Center 540-587-5681  
Better Business Bureau 800-833-5501  
Campbell County Chamber of Comm. 434-992-9850  
Pittsylvania County Chamber of Comm. 434-432-1650

**LVL**  
Leesville Lake

**FACTS AND FIGURES**

<b>The Smith Mountain Dam</b>	235 feet
Height from riverbed	816 feet
Length, not including abutments	210 feet
Height of spillway	Concrete Arch
Type of construction	
<b>The Leesville Dam</b>	94 feet
Height from riverbed	920 feet
Length	Concrete Gravity
Type of construction	
<b>Smith Mountain Lake</b>	40 miles
Length of lake	1,142,000 acre-feet
Storage (approx.)	200,600 acres
Area (approx.)	500 miles
Shoreline	
<b>Leesville Lake</b>	17 miles
Length of lake	94,960 acre-feet
Storage (approx.)	3,270 acres
Area (approx.)	100 miles
Shoreline	

History researched and compiled by:  
Michael A. Lohue (malohue@gmail.com)

The Skillman Team  
#1 Realtors-Sales and Listings Leesville Lake

Mike: 434 532 5331 cell  
Sam: 703 328 2812 cell

Dreams Can Come True

**HENSON CONSTRUCTION**  
Custom Homes and Docks

540.529.1947  
www.HENSONBUILT.com

434.656.2636 Office

**wahoo DOCKS**  
discover the difference

Pete Cox  
434-532-5333  
www.LakesideServicesOfVA.com

Wahoo Docks  
Hydrohoist Boat Lifts  
JetDock Systems  
Barge & Crane Services

- Rip Rap Erosion Control
- Pile Driving
- Debris Removal
- Stump Pulling



2008  
**Leesville Lake**  
and it's Neighborhoods

**Map**

Prepared by  
**Leesville Lake Association**  
www.leesvillelake.org