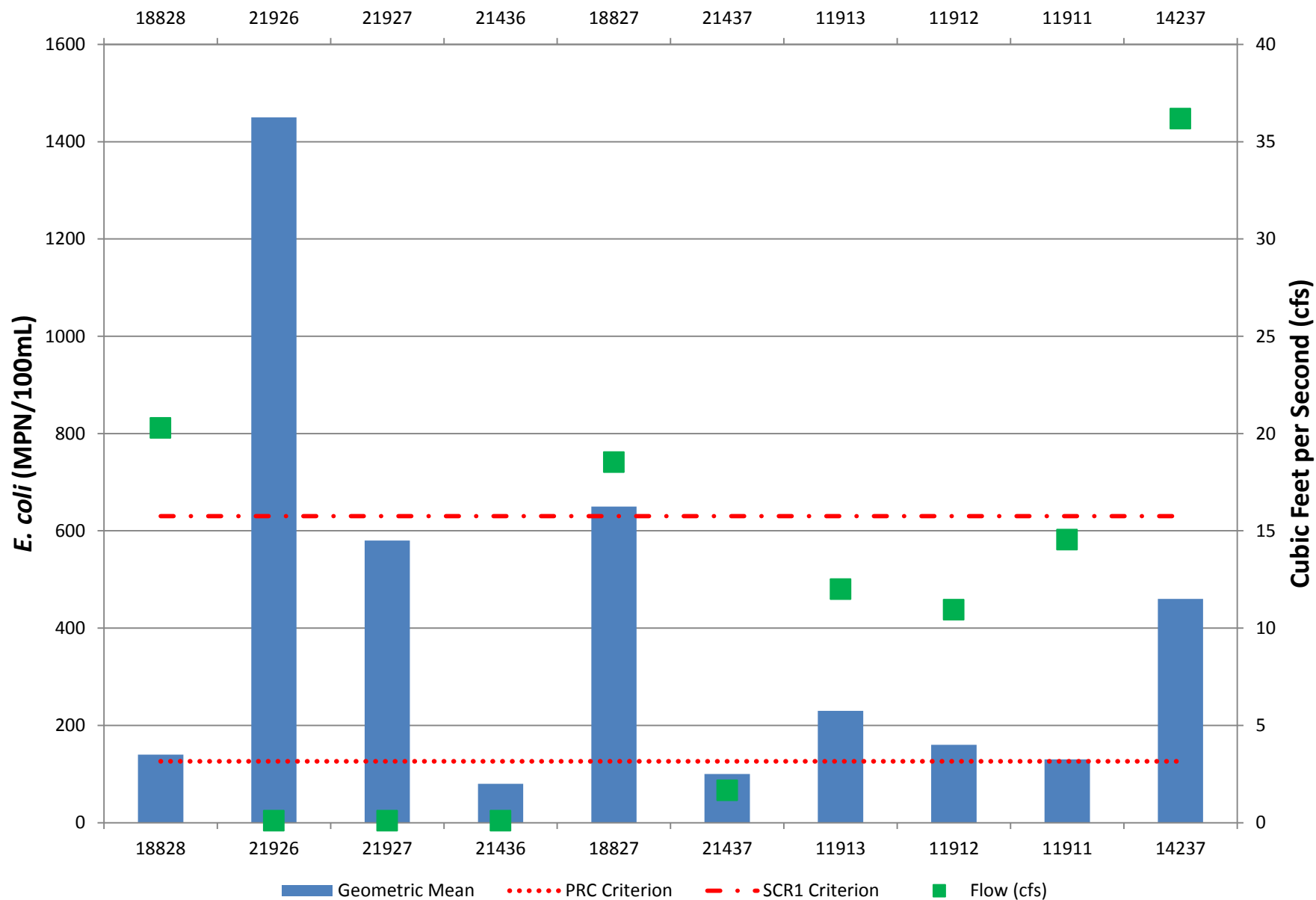


Date of collection: October 11, 2016

**All data are preliminary and subject to change.**



## Nolan Creek WPP Monitoring Station Locations

Station ID	Station Description	Latitude	Longitude
18828	South Nolan Creek at 38th St in Killeen	31.10809	-97.70216
21926	Long Branch at Tripp Trail in Killeen	31.13459	-97.69722
21927	Long Branch at Lake Road in Killeen	31.12176	-97.68845
21436	Long Branch just upstream of crossing of South Nolan Creek at Twin Creek Dr in Killeen	31.10595	-97.68936
18827	South Nolan Creek at Twin Creek Dr in Killeen	31.10347	-97.68785
21437	Little Nolan Creek off US 190 in Killeen	31.09714	-97.69227
11913	South Nolan Creek at Roy Reynolds Road in Killeen	31.09938	-97.67175
11912	South Nolan Creek at Amy Lane in Harker Heights	31.09361	-97.6589
11911	South Nolan Creek at FM 3219 in Harker Heights	31.08667	-97.64806
14237	Nolan Creek at SH 93 in Belton	31.05874	-97.46499