

Caballote para chapa grecada.

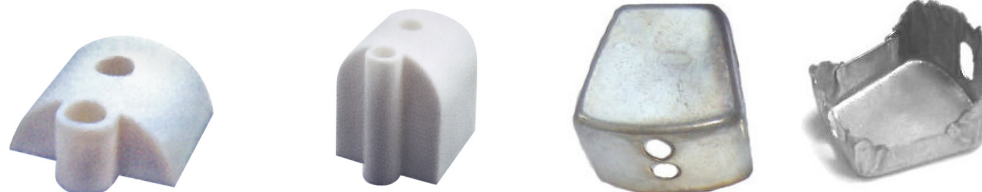
| Código Item | Greca (mm) | A (mm) | B (mm) | C (mm) | unds cartón |
|-------------|------------|--------|--------|--------|-------------|
| 141452 | 15 | 15-19 | 15 | 24 | 500 |
| 141453 | 20 | 19-22 | 14 | 30 | 500 |
| 141454 | 20 | 19-22 | 14 | 26 | 500 |
| 141455 | 22-25 | 20-25 | 12 | 30 | 500 |
| 141456 | 22-25 | 20-25 | 12 | 35 | 500 |
| 141457 | 22-25 | 20-25 | 12 | 33 | 500 |
| 141458 | 24-26 | 23-27 | 12 | 31 | 500 |
| 141459 | 25-29 | 26-29 | 10 | 35 | 500 |
| 141460 | 30-35 | 30-35 | 7 | 39 | 500 |
| 141461 | 36-40 | 36-40 | 9 | 46 | 500 |
| 141462 | 40-44 | 40-44 | 15 | 62 | 500 |

CABALLETES LACADOS.

Caballote lacado de acero galvanizado, con junta de polietileno.

Grosor: 0.8 a 1,0 mm

Saddle washer with polyethylene gasket



Apoyaondas

| Código Item | Medida Size | Altura Heigh (mm) | Material | unds cartón |
|-------------|-------------|-------------------|------------|-------------|
| 141463 | Mini onda | 18 | Plástico | 500 |
| 141464 | Gran onda | 50 | Plástico | 500 |
| 141465 | Mini onda | 18 | Chapa galv | 500 |
| 141466 | Gran onda | 50 | Chapa galv | 500 |

Apoyaondas.

Accessories Light corrugated shee

GARANTÍA FESIT

