



COMMERCIAL AIR CONDITIONERS

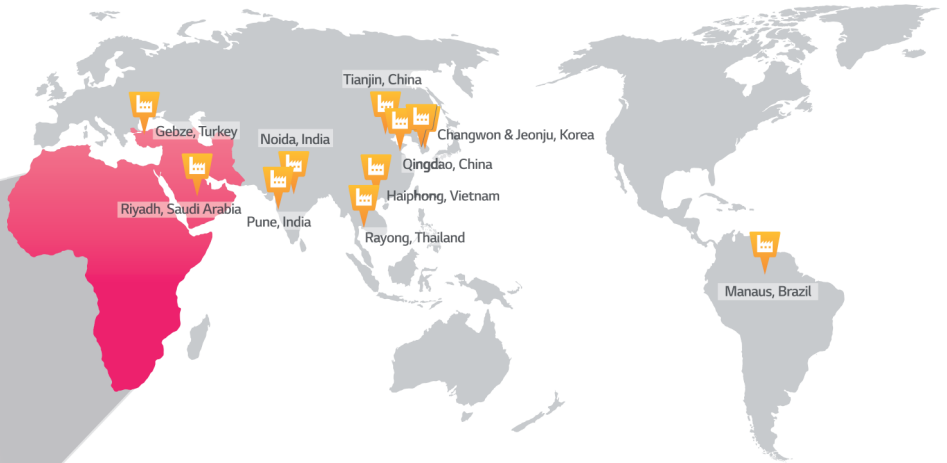
# COMMERCIAL AIR CONDITIONERS

A large, solid red circle with a thin white border, containing the text 'LG HVAC SOLUTION' in white, bold, sans-serif font.

**LG HVAC  
SOLUTION**



# GLOBAL PRODUCTION SITE



LG Electronics products sold in Middle East and Africa 'Made in Korea' (except for ceiling suspended unit).

## TOTAL HVAC SOLUTION PROVIDER

Ever since manufacturing Korea's first home grown air conditioner in 1968, LG has remained at the forefront of air conditioning innovation. LG has been the world's top selling manufacturer of residential air conditioning solutions. In 2008, LG achieved to sell the total of more than 100 million air conditioners. Building on its success and technological leadership in the residential air conditioning sector, LG has moved into system air conditioning as well.

The company's range of high performance system air conditioning products provide effective temperature control to large-scale buildings and facilities. Overtime, LG has evolved into the total HVAC and energy solution provider, investing in new technologies and adding chillers, VR<sup>2</sup> systems, and building management systems (BMS) into its comprehensive product portfolio. Along with a wide range of innovative solutions, LG delivers unrivalled customer service.

The company produces top-notch air conditioning professionals at its academies, of which there are nearly 80 worldwide. These centers of excellence provide workshops and training programs that offer invaluable hands-on experience. LG also provides useful tools for HVAC system engineers and installers, including its time saving LG Air Conditioner Technical Solution(LATS) software. Additionally, LG operates several state-of-the-art R&D facilities all across the planet.

One such facility is the Energy Lab, a purpose-built R&D and testing center in northern France. Helping to keep the company ahead of the competition, the scientists and engineers at the Energy Lab study the effects of different environmental conditions on LG's products. This in-depth research and analysis enables LG to tailor its solutions to the specific environmental demands of each individual market. Combining the best technologies with the best ideas, LG's high quality products are now enjoyed by customers in over 100 countries.

# MIDDLE EAST/AFRICA INFRASTRUCTURE



MEA B2B Regional Head office : 1



Producing Center : 2



Sales Office : 13



Academy : 20



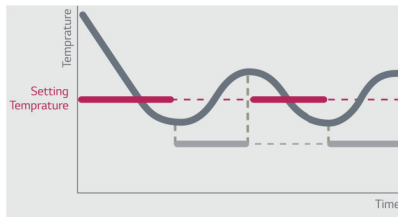
---

## COMFORTABLE OPERATION

---

Once the desired temperature is achieved, unlike conventional air conditioners that turn the compressor on and off, LG inverter units adjust and constantly vary the compressor speed to maintain the desired temperature with minimal fluctuation to ensure that your comfort is not compromised.

Conventional

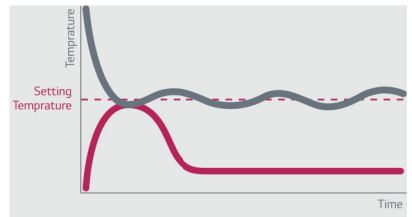


Room Temperature

Power On

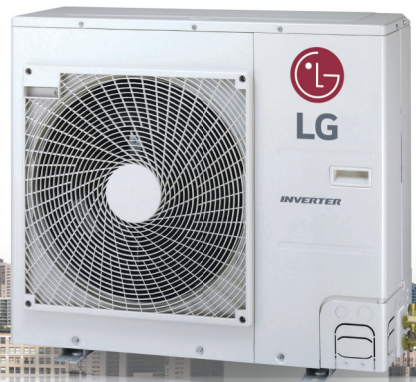
Power Off

LG Inverter



Room Temperature

Power On



# Why LG Commercial Air Conditioners

---



## LG INVERTER TECHNOLOGY CUTS POWER CONSUMPTION

---

LG has taken the initiative to develop new, highly efficient, inverter technology. In addition to consuming less electricity, the company's advanced inverter systems have powerful performance and enhanced reliability.

A clear illustration of how innovative technology can make a real difference, LG's Inverter compressor provides a welcome reduction in power usage (up to 25%) and operational costs. Designed for commercial spaces, such as offices and retail stores, the new model offers effective comfort, greater endurance and exceptional seasonal energy efficiency.

INVERTER SINGLE SPLIT  
CEILING MOUNTED  
CASSETTE

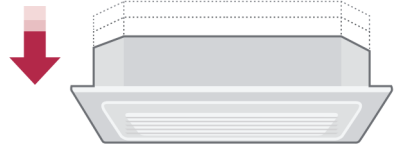


INVERTER  
CASSETTE

# CEILING MOUNTED CASSETTE

## Compact Size

The indoor unit with slim and compact dimensions has reduced the restriction which enables successful installation in various spaces.

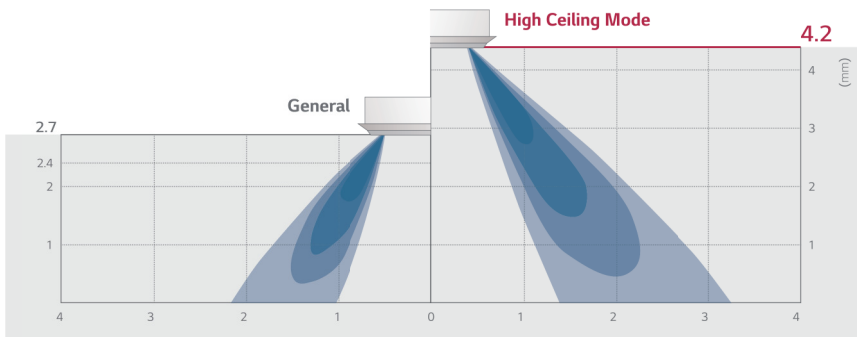


Length width : 840X840mm

Standard Inverter	Height
5.3 kW	204mm
7.0-8.2 kW	246mm
10.0-15.8 kW	288mm

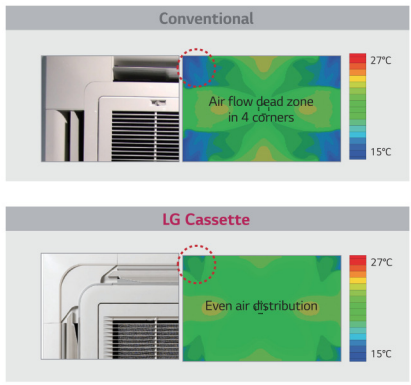
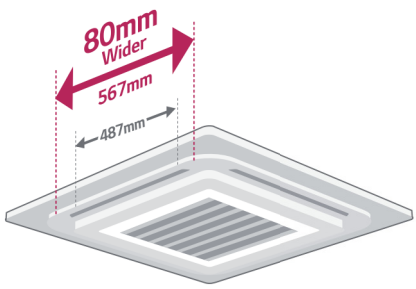
## High Ceiling Mode

High ceiling mode provides powerful cooling and heating up to 4.2m in height, from ceiling to floor.



## Wide Jet Air Flow

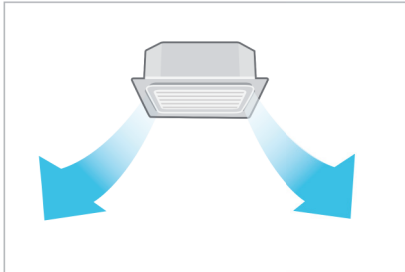
Improved vanes reduce the curved area and provide even distribution.



## Independent Vane Operation

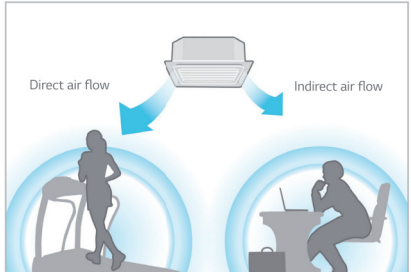
The independent vane operation feature uses separate motors, making it possible to control all four vanes independently.

### All Vane Operation



\* Wired remote controller PQRCSLO(QW) applied

### Independent Vane Control



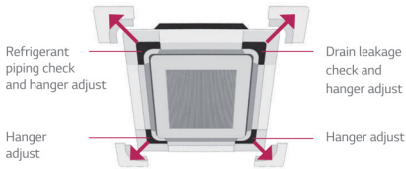


# CEILING MOUNTED CASSETTE

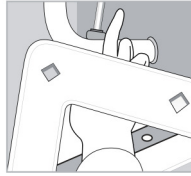
## Convenient Panel Installation

The detachable corner design makes it easy to adjust the hanger during installation and to check for leakages in the drain connection pipe.

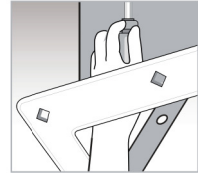
### Detachable Corner Design



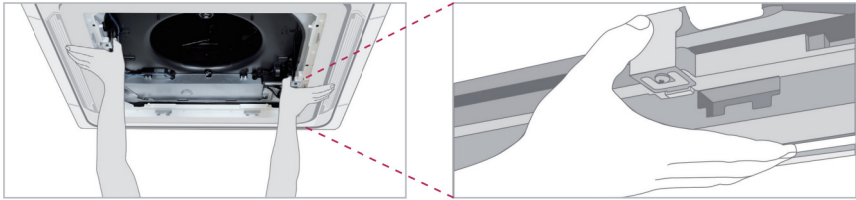
### Drain Leakage Check



### Hanger Adjust



It is easy to install the panel to the body, using the button type panel design.

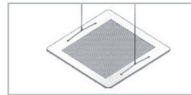


## Auto Elevation Grille

Easy filter cleaning with elevation grille.



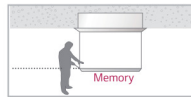
### 4-Point Support Structure



### Auto Leveling



### Memory for User's Level



### Auto Stop Detection



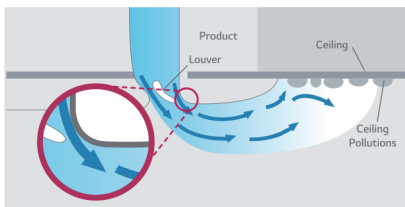
\* Operating with wired remote controller PQRCSL0/QW and wireless remote controller included in PTEGM0.

\* Applied to cassette panel PF-UMC1

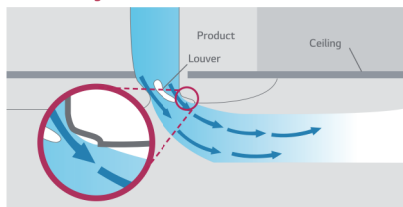
## Prevent Ceiling Pollution

Coanda design of air outlet can prevent contamination of ceiling.

Conventional



Coanda Design



INVERTER / 1PHASE

# CEILING MOUNTED CASSETTE



## [ Cooling Only ]

Indoor				ATNQ18GPLTO	ATNQ24GNLTO
Power Supply			V, Ø, Hz	220-240, 1, 50	220-240, 1, 50
Dimensions	Body	W x H x D	mm	840 x 204 x 840	840 x 246 x 840
Net Weight	Body		kg (lbs)	20.0 (44.1)	22.3 (49.2)
	Type			Turbo Fan	Turbo Fan
Fan	Air Flow Rate	H / M / L	m <sup>3</sup> /min	17.0 / 15.0 / 13.0	23.0 / 21.0 / 19.0
		H / M / L	ft <sup>3</sup> /min	600 / 530 / 459	812 / 742 / 671
Fan Motor	Type			BLDC	BLDC
Dehumidification Rate			l/h (pts/h)	2.1 (4.5)	2.5 (5.3)
Sound Pressure Level		H / M / L	d3(A)	36 / 34 / 32	40 / 38 / 36
Piping Connections	Liquid		mm (inch)	Ø6.35 (1/4)	Ø 9.52 (3/8)
	Gas		mm (inch)	Ø12.7 (1/2)	Ø 15.88 (5/8)
Drain (O.D. / I.D.)			mm (inch)	Ø 32.0 (1-1/4) / 25.0(31/32)	Ø 32.0 (1-1/4) / 25.0(31/32)
	Model Name			PT-UMC1	PT-UMC1
Decoration Panel		W x H x D	mm	950 x 25 x 950	950 x 25 x 950
	Net weight		kg (lbs)	5.0 (11.0)	5.0 (11.0)
Outdoor				ATUQ18GPLTO	ATUQ24GNLTO
Capacity	Cooling	Rated	k/W	5.27	7.03
			Btu/h	18,000	24,000
	Heating	Rated	k/W	-	-
			Btu/h	-	-
Power Input	Cooling	Rated	k/W	1.55	2.07
	Heating	Rated	k/W	-	-
Running Current	Cooling	Rated	A	6.70	9.00
	Heating	Rated	A	-	-
EER				3.40 / -	3.40 / -
Power Supply			V, Ø, Hz	220-240, 1, 50	220-240, 1, 50
Dimensions		W x H x D	mm	870 x 655 x 320	870 x 655 x 320
Net Weight			kg(lbs)	43.6 (96.1)	43.8 (96.6)
Compressor	Type			Twin Rotary	Twin Rotary
	Motor type			BLDC	BLDC
Refrigerant	Type			R410A	R410A
	Precharged Amount		g (oz)	1,400 (49.4)	1,400 (49.4)
	Additional Charging Volume		g/m (oz/ft)	20 (0.22)	40 (0.43)
Fan	Type			Electronic Expansion Valve	Electronic Expansion Valve
	Air Flow Rate		m <sup>3</sup> /min x No.	Propeller	Propeller
Fan Motor	Type			50 x 1	50 x 1
Sound Pressure Level	Cooling	Rated	d3 (A)	48	50
	Heating	Rated	d3 (A)	-	-
Piping Connections	Liquid	Outer Dia.	mm (inch)	Ø6.35 (1/4)	Ø 9.52 (3/8)
	Gas	Outer Dia.	mm (inch)	Ø12.7 (1/2)	Ø 15.88 (5/8)
Piping Length		Max.	m (ft)	50 (164.0)	50 (164.0)
Maximum Height Difference	ODU-IDU	Max.	m (ft)	30 (98.4)	30 (98.4)
Operation Range (Outdoor Temperature)	Cooling	Min. - Max.	°C DB (°FDB)	0 (32.0) - 54 (129.2)	0 (32.0) - 54 (129.2)
	Heating	Min. - Max.	°C WB (°FFWB)	-	-

Note: Due to our policy of innovation some specification maybe changed without Notification.

**AT-Q18GMLT0 / AT-Q24GMLT0 /  
AT-Q30GMLT0 / AT-Q36GMLT0 /  
AT-Q48GMLT0 / AT-Q54GMLT0**



ATUQ18GMLT0  
ATUQ24GMLT0

ATUQ30GMLT0  
ATUQ36GMLT0

ATUQ48GMLT0  
ATUQ54GMLT0

ATNQ30GMLT0	ATNQ36GMLT0	ATNQ48GMLT0	ATNQ54GMLT0
220-240, 1, 50	220-240, 1, 50	220-240, 1, 50	220-240, 1, 50
840 × 246 × 840	840 × 288 × 840	840 × 288 × 840	840 × 288 × 840
22.3 (49.2)	24.6 (54.2)	28.0 (61.7)	28.0 (61.7)
Turbo Fan	Turbo Fan	Turbo Fan	Turbo Fan
23.0 / 21.0 / 19.0	30.0 / 28.0 / 26.0	32.0 / 30.0 / 28.0	32.0 / 30.0 / 28.0
812 / 742 / 671	1,060 / 989 / 918	1,130 / 1,060 / 989	1,130 / 1,060 / 989
BLDC	BLDC	BLDC	BLDC
2.5 (5.3)	2.7 (5.7)	3.6 (7.7)	3.6 (7.7)
40 / 38 / 36	43 / 41 / 39	44 / 42 / 40	46 / 44 / 42
Ø 9.52 (3/8)	Ø 9.52 (3/8)	Ø 9.52 (3/8)	Ø 9.52 (3/8)
Ø 15.88 (5/8)	Ø 15.88 (5/8)	Ø 19.05 (3/4)	Ø 19.05 (3/4)
Ø 32.0 (1-1/4) / 25.0(31/32)	Ø 32.0 (1-1/4) / 25.0(31/32)	Ø 32.0 (1-1/4) / 25.0(31/32)	Ø 32.0 (1-1/4) / 25.0(31/32)
PT-UMC1	PT-UMC1	PT-UMC1	PT-UMC1
950 × 25 × 950	950 × 25 × 950	950 × 25 × 950	950 × 25 × 950
5.0 (11.0)	5.0 (11.0)	5.0 (11.0)	5.0 (11.0)
ATUQ30GMLT0	ATUQ36GMLT0	ATUQ48GMLT0	ATUQ54GMLT0
8.20	10.00	13.48	15.82
28,000	34,100	46,000	54,000
-	-	-	-
-	-	-	-
2.41	2.94	3.96	5.39
-	-	-	-
10.50	12.80	17.20	23.40
-	-	-	-
3.40 / -	3.40 / -	3.40 / -	2.94 / -
220-240, 1, 50	220-240, 1, 50	220-240, 1, 50	220-240, 1, 50
950 × 834 × 330	950 × 834 × 330	950 × 1,380 × 330	950 × 1,380 × 330
65.0 (143.3)	65.0 (143.3)	92.0 (202.8)	92.0 (202.8)
Twin Rotary	Twin Rotary	Twin Rotary	Twin Rotary
BLDC	B.DC	BLDC	BLDC
R410A	R410A	R410A	R410A
2,200 (77.6)	2,200 (77.6)	3,400 (119.9)	3,400 (119.9)
40 (0.43)	40 (0.43)	40 (0.43)	40 (0.43)
Electronic Expansion Valve	Electronic Expansion Valve	Electronic Expansion Valve	Electronic Expansion Valve
Propeller	Propeller	Propeller	Propeller
70 × 1	70 × 1	70 × 2	70 × 2
BLDC	B.DC	BLDC	BLDC
48	48	55	55
-	-	-	-
Ø 9.52 (3/8)	Ø 9.52 (3/8)	Ø 9.52 (3/8)	Ø 9.52 (3/8)
Ø 15.88 (5/8)	Ø 15.88 (5/8)	Ø 19.05 (3/4)	Ø 19.05 (3/4)
50 (164.0)	50 (164.0)	50 (164.0)	50 (164.0)
30 (98.4)	30 (98.4)	30 (98.4)	30 (98.4)
0 (32.0) - 54 (129.2)	0 (32.0) - 54 (129.2)	0 (32.0) - 54 (129.2)	0 (32.0) - 54 (129.2)
-	-	-	-

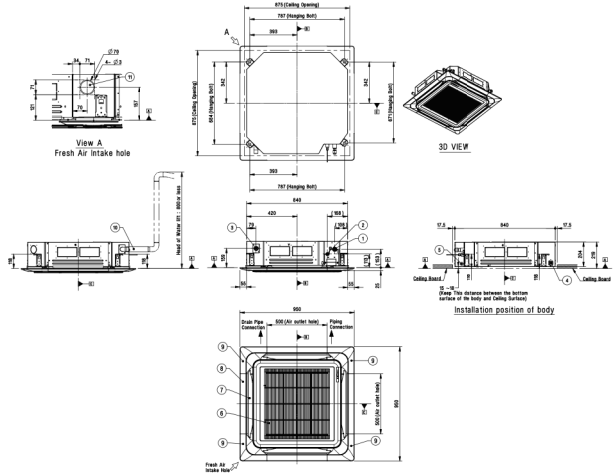
COOLING ONLY

# CEILING CASSETTE

## ATNQ18GPLTO

(Unit:mm)

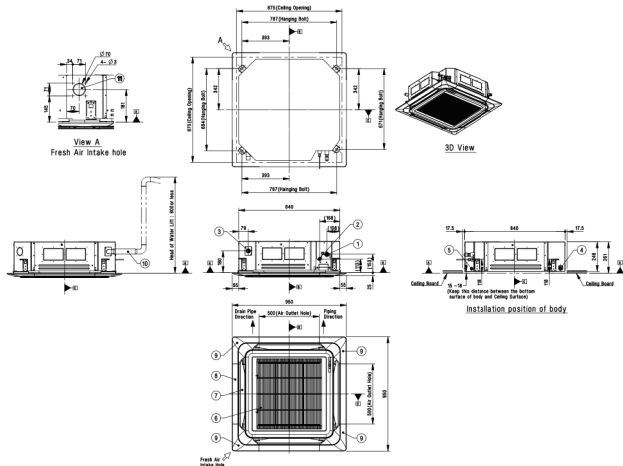
Part Name
1 Gas Pipe Connection
2 Liquid Pipe Connection
3 Drain Pipe Connection
4 Power and Communication Cable Routing Hole
5 Wire Remote Controller Wire Routing Hole
6 Air Inlet
7 Air Outlet
8 Decoration Panel (Accessory)
9 Decoration Corner Cover
10 Flexible Drain Hose
11 Fresh Air Intake Hole



## ATNQ24GNLTO / ATNQ30GNLTO

(Unit:mm)

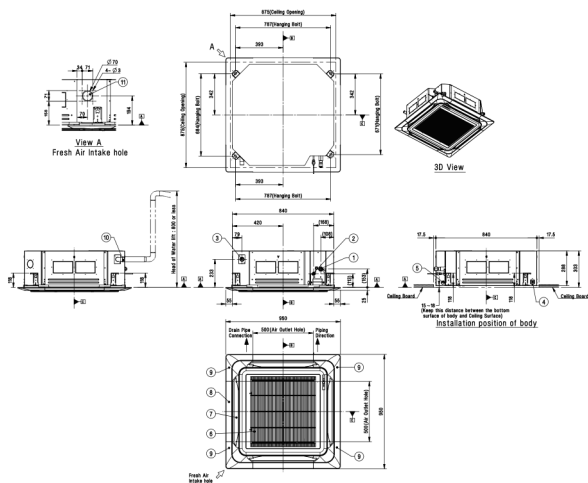
Part Name
1 Gas Pipe Connection
2 Liquid Pipe Connection
3 Drain Pipe Connection
4 Power and Communication Cable Routing Hole
5 Wire Remote Controller Wire Routing Hole
6 Air Inlet
7 Air Outlet
8 Decoration Panel (Accessory)
9 Decoration Corner Cover
10 Flexible Drain Hose
11 Fresh Air Intake Hole



# ATNQ36GMLT0 / ATNQ48GMLT0 / ATNQ54GMLT0

(Unit:mm)

Part Name
1 Gas Pipe Connection
2 Liquid Pipe Connection
3 Drain Pipe Connection
4 Power and Communication Cable Routing Hole
5 Wire Remote Controller Wire Routing Hole
6 Air Inlet
7 Air Outlet
8 Decoration Panel (Accessory)
9 Decoration Corner Cover
10 Flexible Drain Hose
11 Fresh Air Intake Hole





## LG Electronics

<http://www.lg.com> <http://partner.lge.com>

Copyright © 2016 LG Electronics. All rights reserved.

### LG Distributor in UAE



**FORTUNE  
INTERNATIONAL  
TRDG. CO. L.L.C**

website: [www.fortune.ae](http://www.fortune.ae)

Head Office - Sharjah, P.O. Box: 25818, U.A.E

T.: +971 6 555 36 77 F.: +971 6 559 46 77

Branch Office - Dubai, P.O. Box: 92807, U.A.E

T.: +971 4 258 74 77 F.: +971 4 258 74 78

Branch Office - Abu Dhabi, P.O.Box 133666, U.A.E.

T.: +9712-5500127, F.: +9712-5500129

E-mail: [fortint@emirates.net.ae](mailto:fortint@emirates.net.ae)



The air conditioners manufactured by LG have received ISO9001 certificate for quality assurance and ISO14001 certificate for environmental management system.