

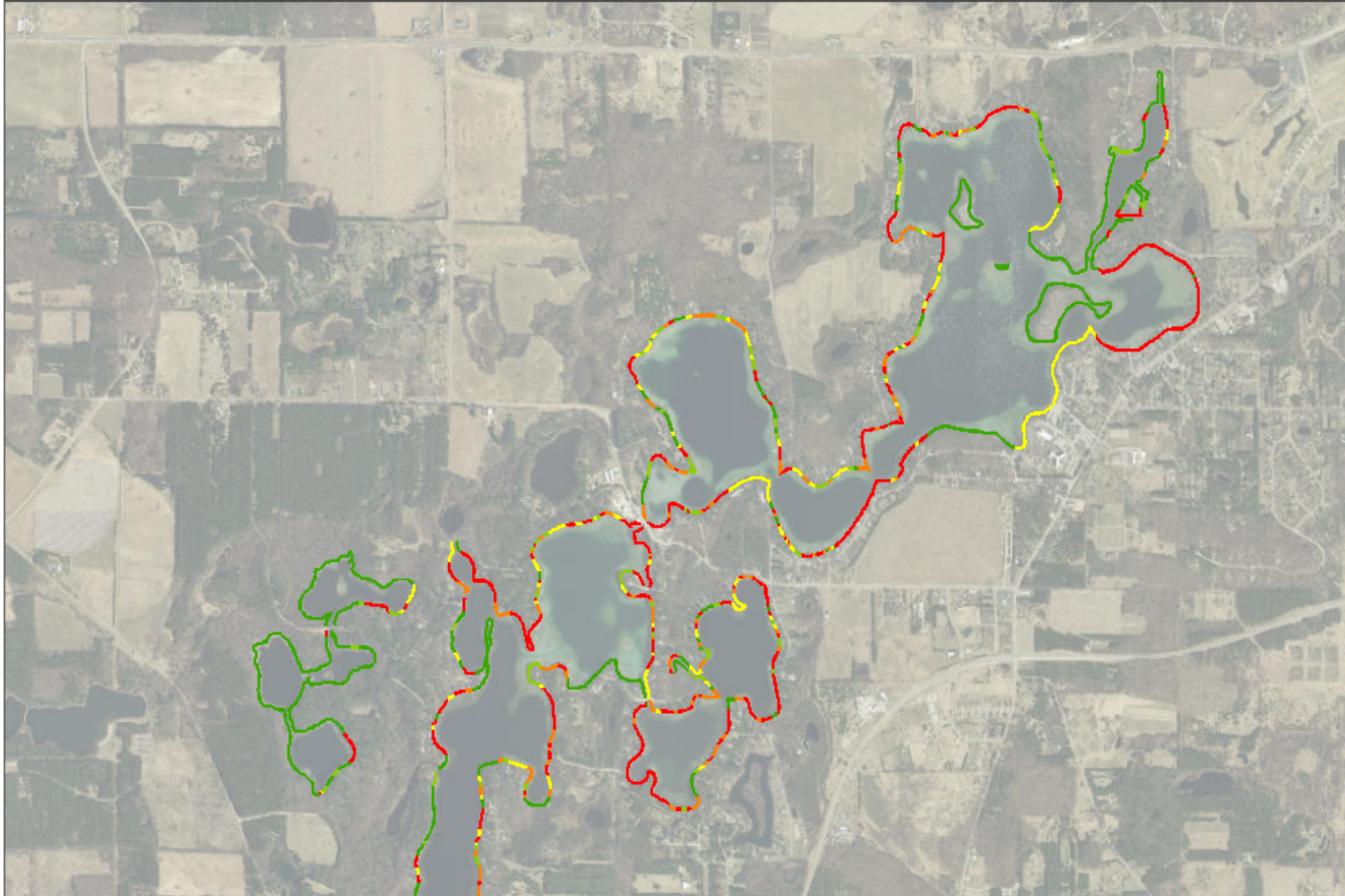
Shoreline Assessment Map Links

Use either of the following links to the Shoreline Assessment Map. NOTE: These links will allow one to move the map to see the south end of Long Lake that does not show up when one prints the Shoreline Assessment map.

<http://tinyurl.com/hvbdefg>

<http://waupacacounty.maps.arcgis.com/apps/MapTools/index.html?appid=80a2ae159ea24588b007d7a78768c922>

2014 Shoreline Assessment








August 29, 2020

To Order Maps Or To Report A Problem Visit...

www.co.waupaca.wi.us/departments/land_information/index.php

Map Key

Shoreline Assessment	
	0 - 20
	21 - 40
	41 - 60
	61 - 80
	81 - 100

[Map Data Sources](#) -->



ATTENTION!

GIS TAX PARCEL MAPS ARE FOR INFORMATIONAL PURPOSES ONLY AND ARE NOT INTENDED TO REPRESENT EVIDENCE IN TITLE. THE REPRESENTATIONS ON THIS MAP COULD IN FACT BE IN ERROR AND SHOULD NOT BE RELIED UPON AS THE SOLE DETERMINING FACTOR IN THE LOCATION OF ANY GIVEN PARCEL. WAUPACA COUNTY IS NOT RESPONSIBLE FOR ANY INACCURACIES CONTAINED HEREIN. INDIVIDUALS SHOULD CONSULT LEGAL REPRESENTATION OR PROFESSIONAL SURVEY ADVICE TO CONFIRM AND INSURE ACCURACY OF A GIVEN PARCEL DESCRIPTION.