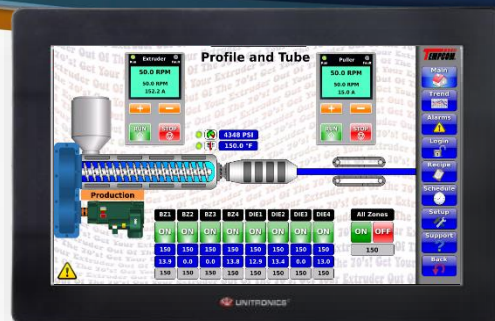


Technical Data Sheet

Premium Extruder Control System

Very little has changed in the mechanical components of extruders in the past 20 years. What has changed is the technology in controlling and monitoring the performance of extruders. The TEMPCOM® Premium Series is a highly featured extruder control system designed for every type of extrusion line. It that can be integrated onto older extruders resulting in higher efficiency, longer heater life and better process control. It is easy to use and highly diagnostic, reducing training and downtime. It contains the following innovations:



PREMIUM SERIES

APPLICATIONS

- Pipe & Profile Extrusion
- Sheet & Foam Extrusion
- Blown & Cast Film Extrusion
- Wire & Cable Extrusion
- Compounding & Pelletizing

SYSTEM SPECIFICATIONS

- Temperature Control
 - 99 Temperature Zones
 - Single or Three Phase
 - Heat/Cool, Heat Only
 - Cooling (Air, Water, Oil)
 - Extruder Preheat
 - Soak Feature
- Temperature Monitor Zones
 - 10 Temperature Zones
 - Melt, Oil, Water, etc.
 - High Temperature Monitor
- Pressure/Load Cell/Gauge Control
 - 10 Pressure/Load Cell Inputs
- Variable Speed Drive Control
 - AC or DC Drives
 - Control of Start/Stop/Speed
 - Monitor Speed/Load/Run/Fault
 - Control Methods
 - Analog/Discrete
 - TCP/IP (Yaskawa, ABB)
 - Heat Sink Temperature Monitor
- Program Features
 - System Cloning
 - Advanced Recipe Control (100 recipes including drive speeds)
 - Scheduler (Pre-Heat)
 - Set-Up (PID tuning, Pressure Calibration)
 - Screen Trending
 - Screen Viewable Manuals
 - Screen Viewable Drawings
 - Drive Health Screen

- Advanced Diagnostics
 - Shorted Solid-State Relay
 - Open Heater
 - Broken Probe
 - Loop Break
- Protective Features
 - Customizable Cold Zone Start Inhibit
 - High Temperature Shutdown High Pressure Shutdown
 - Warning (Yellow) and Fatal (Red) Alarms
 - Alarm Page with Time and Date Stamp
 - Enclosure Temperature Monitor
- Security
 - Customizable Access Levels
- Data Collection
 - Extruder Performance Trending
 - Fault Logging and Fault History
 - Production Data



STANDARD FEATURES

- Main Screen is a Graphical Representation of the Process with Animation of the Extruder Configuration for Ease of Use
- Better Process Control with Tighter Tolerance that Extends Heater Life
- Diagnostic Minimizing Downtime and Maintenance Training
- Wire Numbers Indicate Page and Location of the Wire in the Electrical Drawings
- Heavy Duty Industrial 10 Gauge Steel Enclosure
- Custom Paint for enclosure
- Flange Mounted Circuit Breaker
- Door-Mounted Drive Operator Keypads

OPTIONAL PERFORMANCE PACKAGES

- Local Communication Package
 - Door Mounted ETHERNET/USB port
 - Industrial WIFI
 - VNC Access
 - Intranet Page
- Remote Communication Package
 - EWON Communications Module
 - 1 year of online ICT Support
- Advanced Alarm Package
 - Top Mounted Tower Light
 - Audible Alarm
 - Solid-State Relay Main Contactor
- Advanced Downstream Control
 - Chill Roll Control
 - Melt Pump Control
 - Tension Control
 - Butane Injection Control
 - Laser Mike Input
 - Accumulator Control
 - Winder Control

TECHNICAL SPECIFICATIONS

- Door-mounted 15.7" Color Touchscreen
- 5 Standard Enclosure Configurations
 - Single Door (84" x 40" x 24")
 - Double Door (84" x 78" x 24")
 - Inverted-L Single Door
 - Inverted-L Double Door
 - Side-Mount (Twin Screw)
- All AC Drives will have Individual Circuit Breakers and AC Line Reactors
- Thermocouple Inputs – J Type
- 5,000 Amp Short-Circuit Rating
- UL508A Rating

WARRANTY

- 3 Year

