

SANDI CLEANING SERVICES

LET US CREATE MORE TIME FOR YOU

Cleaning Equipment & Supplies

REVISION 1.0

DATED ON MAY 4, 2015

BY SANDI CLEANING SERVICES

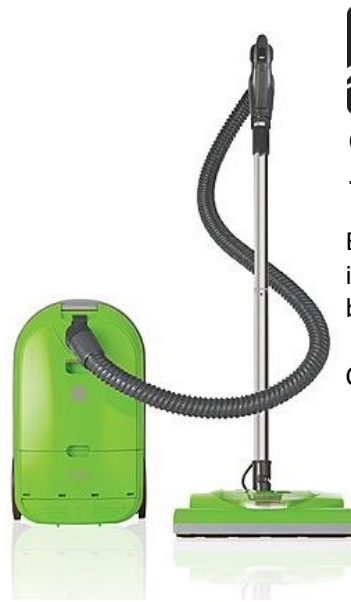
Vacuum Cleaners for Carpets and Hard Floors

... Bagless Vacuum Cleaner is NOT allowed to clean the customer's properties, because of poor services quality



Powerforce Bagged Vacuum with Febreze - 1398

Ideal for functionality and power. While cleaning, feel at ease knowing that you are filtering allergens and eliminating household malodors all at one



Canister Vacuum Cleaner - Lime - 29229

Equipped with a powerful 2-motor system, it boasts powerful suction, ranging from bare floor to carpet

Canister – HEPA Filter



18" Flat Mop & Frame

Developed specifically for the Flat Mop. It offers the highest concentration of micro-denier fiber per square inch resulting in unrivaled performance while minimizing drag on all types of floor, wall, tile, and painted environmental surfaces



Carpet Floor



Carpet Rug



Hardwood Floor



linoleum



Ceramic Tile

Different colors and different uses

... Any other unauthorized colored towels/rags are NOT allowed to clean the customer's properties for the best quality of the services



White

- ✓ In general
- ✓ Washing & Drying



Blue

- ✓ Window, Mirror
- ✓ only with WINDEX & Multi-surface Cleaner



Orange

- ✓ Stainless Steel
- ✓ only with Stainless Steel Polish



Yellow

- ✓ Dusting



chair rail



baseboard



window



mirror



refrigerator



oven



ceiling fan



picture frames



Clorox Clean-Up Cleaner + Bleach

To remove tough stains and greasy dirt while disinfecting with a clean, fresh fragrance

- ✓ Shower grout and caulk
- ✓ Inside of toilet bowl



Comet Bathroom Spray

To dissolve soap scum and hard water film. Disinfects and cleans tough stains. Great on surfaces such as sealed fiberglass, glazed porcelain, plastic and vinyl.

- ✓ Surfaces in bathrooms only



Windex Complete Glass & Multi Surface Cleaner

Perfect for cleaning windows, mirrors, glass shower doors, glass top stoves, and more.

- ✓ Glass & Mirror



toilet bowl



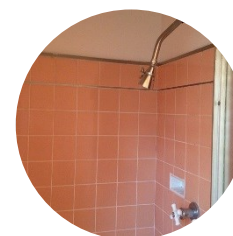
shower grout



bath tub



sink/vanity



shower booth



mirror



window/glass



Formula 409

The workhorse cleaner that pounces on kitchen grease like a hungry kid on birthday cake
Kill 99.9% of germs with every wipe

- ✓ Items in the kitchen microwave, the stove tops, and the countertops



Soft Scrub With Bleach Cleanser

To clean and start disinfecting on contact, killing 99.9% of household germs. It is tough on stains and gentle on surfaces.

- ✓ Some white painted surfaces
- ceramic kitchen sinks



Stainless Steel Polish

It is formulated to clean, polish and protect stainless steel, chrome and aluminum surfaces.

- ✓ Stainless steel surfaces



microwave



stovetop



stovetop



countertop



Ceramic sinks



refrigerator



oven



Pine-Sol Multi-Surface Cleaner (Lemon Fresh Scent))

All-purpose cleaner that deodorizes while it cuts grease, grime and dirt. It's tough on messes but so easy on the nose.

- ✓ Painted baseboards
- ✓ windowsills
- ✓ Window frames
- ✓ Door and door frame



COLGATE-PALMOLIVE



Fabuloso® Lavender Multi-Purpose Cleaner

Deep cleans to capture grease and soils. Neutral pH makes product safe for surfaces. Cleans and leaves a long-lasting fragrance.

- ✓ Baseboard
- ✓ Blinds/shutter
- ✓ Tile floor



Great Value: Distilled White Vinegar

Well recognized as a cleaning agent. Especially effective in removing inorganic soils and mineral deposits such as hard water films.

- ✓ Hardwood floor
- ✓ Ceramic tile floor



baseboard



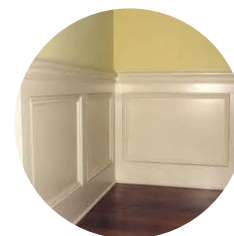
windowsill



door/frame



blind/shutter



chair rails



Hardwood Floor



Ceramic Tile

Other cleaning equipment



2 step ladder



Spider Web Dusters



Scrub brushes



Buckets

***** Safety Notice *****

Because of the safety issue, we are NOT allowed to...



**Climb on ladder
any higher than
first 2 step**



**Lift or move any
object weighing
more than 20lbs**



**Stand on wet
surfaces**

***** Notice *****

**Upon the customer's preference,
other cleaning supplies may apply to clean.
However, these should be instructed their location and
permission to use or provided prior to the arrival of the cr**

