



# center for the Arts!

[Home](#)   [About Us](#)   [Events Calendar](#)   [First Fridays!](#)   [Micro Galleries](#)  
[Artist Links](#)   [Arts Workshops](#)   [Art Shows](#)   [Writing Contests](#)   [Community Links](#)

## May Events In the Lake Sunapee Region & Ongoing Events

### Upcoming Art Workshops



#### at Whipple Hall, New London

CFA is proud to offer these exciting workshops  
[Register Here!](#)

"Painting En Plein Air" with Tatiana Yanovskaya-Sink   May 22,29, June

12,26.

"Introduction to Pastel Painting" with Elizabeth Craumer   May 14-June 25

"Understanding Camera Settings" with Larry Harper   May 26

"Understanding Lighting and Movement" with Larry Harper   May 27

#### FOR KIDS

"Acrylic Painting" with Alison Vernon   May 4-June 1

See the complete Winter Schedule at [www.CenterForTheArtsNH.org](http://www.CenterForTheArtsNH.org) . [Register Here!](#)

### May 1 5-7pm



#### First Friday- "Gallery Night" An Evening of Art and Music

With community collaboration with New London Hospital and local galleries, the Center for the Arts is pleased to invite the community to the First Friday event in New London. Be sure to visit these galleries:

[The New London Inn](#) will host ten artists from the former Banks Gallery. Tom Pirozzoli will provide music at the Inn on opening night.

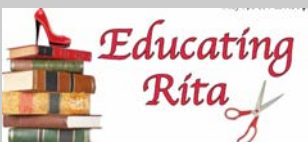
[Lake Sunapee Bank](#) will host Suzanne Cronin

[New London Hospital Gallery](#) will have a retrospective of past exhibitors with over 31 artists. Additionally, the Kearsarge Chorale Chamber Singers will perform at this event

All First Fridays are FREE and open to the public. [www.CenterForTheArtsNH.org](http://www.CenterForTheArtsNH.org)



### May 1 & 2 7:30pm



#### Educating Rita by NNE Rep Opens

For its 2015 season, Northern New England Repertory Theatre Company (NNE Rep) presents British playwright Willy Russell's two-character comedy Educating Rita\* at Whipple Memorial Town Hall, 429 Main Street, New London. May 1,2,7,8 & 9 at 7:30pm and May 3 & 10 at 2pm. Ticket information at [www.NNERTC.org](http://www.NNERTC.org).

### May 1



#### "Beautiful Markings: Native American Tattoos"

In the Contemporary Art Gallery, MT. Kearsarge Indian Museum. For thousands of years people have been marking their bodies for personal and spiritual reasons. See examples of modern day traditional tattooing of First Nations people. Liz Charlebois (Abenaki) guest curator. Free admission to gallery. Runs through July 12. [www.indianmuseum.org](http://www.indianmuseum.org).

### May 1 7pm



#### Sunapee Community CoffeeHouse presents Susie Burke and David Surette

Warmth, vitality, and spontaneity mark their performances and have earned them a reputation as one of the finest acts on the lively New England folk scene. Held at Sunapee Methodist Church, 9 Lower Main Street in Sunapee. More info and directions [www.sunapeecoffeehouse.org](http://www.sunapeecoffeehouse.org)

### Opening May 1



#### Other Desert Cities by Jon Robin Baitz

May 1 Thru May 17. Brooke Wyeth returns home to Palm Springs after a six-year absence to celebrate Christmas with her parents, her brother, and her aunt. Brooke announces that she is about to publish a memoir dredging up a pivotal and tragic event in the family's history -a wound they don't want reopened. [shakerbridgetheatre.org](http://shakerbridgetheatre.org) 603-448-3750

**May 3 2pm****Educating Rita by NNE Rep**

For its 2015 season, Northern New England Repertory Theatre Company (NNE Rep) presents British playwright Willy Russell's two-character comedy *Educating Rita*\* at Whipple Memorial Town Hall, 429 Main Street, New London. May 7, 8 & 9 at 7:30pm and May 10 at 2pm. Ticket information at [www.NNERTC.org](http://www.NNERTC.org).

**May 3 4pm****Brooks Hubbard Farewell Show at One Mile West**

Tickets \$10 in advance, \$15 at the door.  
[www.onemilewest.com](http://www.onemilewest.com)

**May 7, 8 & 9 7:30pm****Educating Rita by NNE Rep**

For its 2015 season, Northern New England Repertory Theatre Company (NNE Rep) presents British playwright Willy Russell's two-character comedy *Educating Rita*\* at Whipple Memorial Town Hall, 429 Main Street, New London. May 7, 8 & 9 at 7:30pm and May 10 at 2pm. Ticket information at [www.NNERTC.org](http://www.NNERTC.org).

**May 7 5:30-8:30pm****Thursday's Child in support of CFA**

Thursday's Child at the Coach House Restaurant at the New London Inn supports local community non-profits one plate at a time. Join us, bring your friends and enjoy a wonderful dining experience and help support the CFA. Make your reservations by calling 603-526-2791 or go on-line to <http://www.thenewlondoninn.com/reservations-for-the-coach-house-restaurant/>

**May 8 5pm****Juried Regional Exhibition Opening Reception**

Artwork for 70-100 artists from the greater region. Exhibit runs May 9- June 11. Opening reception 5-7pm.  
[www.libraryartscenter.org](http://www.libraryartscenter.org)

**May 8 7pm****Sunapee Community CoffeeHouse Open Mic**

The Tradition continues, Stop by to listen or join in. Sign up on site with the host for your 15 min or three songs. Storytellers also welcome!. Held at Sunapee Methodist Church, 9 Lower Main Street in Sunapee. More info and directions [www.sunapeecoffeehouse.org](http://www.sunapeecoffeehouse.org)

**May 10 2pm****Educating Rita by NNE Rep**

For its 2015 season, Northern New England Repertory Theatre Company (NNE Rep) presents British playwright Willy Russell's two-character comedy *Educating Rita*\* at Whipple Memorial Town Hall, 429 Main Street, New London. May 1, 2, 7, 8 & 9 at 7:30pm and May 3 & 10 at 2pm. Ticket information at [www.NNERTC.org](http://www.NNERTC.org).

**May 10 2pm****The Kearsarge Community Band annual "spring swing" concert**

The concert is free and open to the public. At the New London Outing Club Indoor facility on Cougar Court in New London, NH. If any questions, please contact the band's director, Aarne Vesilind, at [aarne.vesilind@gmail.com](mailto:aarne.vesilind@gmail.com).

**May 13 Deadline****Memoirs Page in the Intertown Record**

April Memoirs page will feature short essays and poems on "Wonder". If you'd like to contribute please limit your entry to 300 words, and e-mail to longtime local workshop leader Bobbi Stoneman at [brilliq102@tds.net](mailto:brilliq102@tds.net).

**May 15 7pm****Sunapee Community CoffeeHouse presents Rattye McGee**

A duo of mountain loving, New Hampshire song writers. Their mission is to create music that satisfies the hungry soul. Held at Sunapee Methodist Church, 9 Lower Main Street in Sunapee. [www.sunapeecoffeehouse.org](http://www.sunapeecoffeehouse.org)



**May 15 7pm**



### Andover Community Coffeehouse - Sferes & White

Jimmy Sferes and Jennifer White have discovered an uncommon synergy, blending clear and luscious harmonies with complex and imaginative guitar playing. Doors open at 6:00pm for open mic sign-up. [www.andovercoffeehouse.org](http://www.andovercoffeehouse.org)

**May 15 6pm**



### "FLASH BASH 2015 Opening Reception

3rd annual Photo Show "Faces, Places & Moments in Time that tell the Sunapee Story" At the Historic Harbor House Livery on Main Street in Sunapee Harbor. Exhibit runs May 16 & 17, May 23 & 24, 12-4pm. Youth / Amateur Adult / Professional Adult Divisions. [www.projectsunapee.org](http://www.projectsunapee.org)

**May 22 5pm**



### Member Opening Reception at The Fells

See the new exhibits. Enjoy complimentary light hors d'oeuvres and wine bar. 5-7pm. Opening Reception for *Art in Nature 2015: Outdoor Sculpture*, juried by John Kemp Lee and curated by Pam Tarbell of Mill Brook Gallery. Also opening of *Nature's Palette Art Exhibit* featuring the work of select New Hampshire Art Association artists. [www.thefells.org](http://www.thefells.org)

**May 22 7pm**



### Sunapee Community CoffeeHouse presents Larry Dougher with Special Guest Adam McMahon

Larry performs traditional country blues in the revered Delta and Piedmont traditions as well as his intense originals. Local favorite Adam McMahon joins him for what will be a very fun night! Held at Sunapee Methodist Church, 9 Lower Main Street in Sunapee. [www.sunapeecoffeehouse.org](http://www.sunapeecoffeehouse.org)

**May 23 5:30pm**



### Contra-dance at Muster Field Farm

An evening of music and dance with caller Dudley Laufman. There will be live music and dancing following the lively presentation and a potluck. Free and open to the public For details: [musterfieldfarm.com](http://musterfieldfarm.com) [suttonfreelibrary.org](http://suttonfreelibrary.org) 603.927.4927

**May 29 7pm**



### Sunapee Community CoffeeHouse presents The Joshua Incident

Original songs in an alt-country vein bound to the rich traditions of country, folk, and cosmic American music. A unique sound and spirit born from this rare mix of steel, guitar, bass, and vocals. Held at Sunapee Methodist Church, 9 Lower Main Street, Sunapee. [www.sunapeecoffeehouse.org](http://www.sunapeecoffeehouse.org)

**June 5 5-7pm**



### First Friday- "New London Barn Open Rehearsal"

Join the Cast and Director of the New London Barn Playhouse for an Open Rehearsal, Q&A and Reception! New London Barn Playhouse All First Fridays are FREE and open to the public. [www.CenterForTheArtsNH.org](http://www.CenterForTheArtsNH.org)

**June 27 10am-4pm**



### Arts on The Green

Over 30 juried artists will be participating. 10 am- 4pm. FREE and open to the public. [www.CenterForTheArtsNH.org](http://www.CenterForTheArtsNH.org)

## Ongoing Events [Back to Top](#)

**Thru May 3**



### Northern Stage presents Songs for a New World

Running April 8 -May 3. a stunning song cycle/musical revue by Broadway wonder Jason Robert Brown (The Bridges of Madison County, Parade) that loosely tells the story of people searching for a new beginning. For more information and to purchase tickets, call the box office at 802-296-7000 or visit us online at [www.northernstage.org](http://www.northernstage.org)

**Thru May 24****"FLASH BASH 2015 Photography Exhibit**

3rd annual Photo Show "Faces, Places & Moments in Time that tell the Sunapee Story" At the Historic Harbor House Livery on Main Street in Sunapee Harbor. Exhibit runs May 16 & 17, May 23 & 24, 12-4pm.

[www.projectsunapee.org](http://www.projectsunapee.org)

**Thru July 12****Nature's Palette Art Exhibit Opening Reception**

New Hampshire Art Association select artists interpret and find inspiration in the incredible hues, exciting contrasts and harmony that Mother Nature has to offer. The Fells

Main House Gallery. [www.thefells.org](http://www.thefells.org)

**Micro Galleries****Ongoing Exhibits at CFA Micro Galleries**

Whipple Gallery will host twelve area artists for this Members Only exhibit.

New London Inn will feature the work of The Banks Gallery artists.

Lake Sunapee Bank will display art work by Suzanne Cronin

**Thru July 12****"Beautiful Markings: Native American Tattoos"**

In the Contemporary Art Gallery, MT. Kearsarge Indian Museum. For thousands of years people have been marking their bodies for personal and spiritual reasons. See examples of modern day traditional tattooing of First Nations people. Liz Charlebois (Abenaki) guest curator. Free admission to gallery. Runs through July 12. [www.indianmuseum.org](http://www.indianmuseum.org)

**Thru August 27****Retrospective Art Exhibit at New London Hospital**

The artists include: Deborah Bacon, Tom Barber, David Bashaw, Matthew Brown, Debbie Campbell, Brenna Colt, Grace Cooper, Jeanne Cronin-Connolly, Liz D'Amico, Betsy Derrick, Paula Dorr, Ann Eldridge, Jill Fischman, Amy Fortier, Ludmilla Gayvornosky, Stephen Gorman, Paul Howe, Barbara Hunting, Brett Kellerman, Gillian Martlew, Susan Parmenter, Kim Russell, Eric Schultz, Ken Schuster, Yvonne Shukovsky, Patricia Sweet-MacDonald, Mark Vernon, Mimi Wiggin, Sandra Williams-Crossley, Kittie Wilson, Tatiana Yanovskaya-Sink

Main Lobby, New London Hospital.

The exhibit will be on display through August 27, 2015.

603.526.5322 or visit [www.newlondonhospital.org/art](http://www.newlondonhospital.org/art)

**Thru October 12****Art In Nature 2015: Outdoor Sculpture Opening Reception**

Experience the spectacular art of well-known New England sculptors as you explore the beautiful gardens and grounds of The Fells. John Kemp Lee and curated by Pam Tarbell of Mill Brook Gallery, Concord, NH. [www.thefells.org](http://www.thefells.org)

Center for the Arts e-Calendar goes out twice a month (near the 15th and the 30th). To be included in our arts calendar we must receive your cultural event information by the 15th of the prior month. To add your **Cultural Event** to our e-Calendar send your information, date and photo to [calendar@centerfortheartsnh.org](mailto:calendar@centerfortheartsnh.org)

To Subscribe to our e-Calendar of Events click here

[Subscribe to E-Newsletter](#)

Become a Member or Volunteer

Contact us!

Center for the Arts | 603-526-4444 | [info@centerfortheartsnh.org](mailto:info@centerfortheartsnh.org) | <http://www.centerfortheartsnh.org>

P.O. Box 872

New London, NH 03257

Copyright © 2014. All Rights Reserved.

[Forward this email](#)



This email was sent to [jcroninconnolly@gmail.com](mailto:jcroninconnolly@gmail.com) by [info@centerfortheartsnh.org](mailto:info@centerfortheartsnh.org) | [Update Profile/Email Address](#) | Rapid removal with [SafeUnsubscribe™](#) | [Privacy Policy](#).



Try it FREE today.

Center for the Arts | P.O. Box 872 | New London | NH | 03257