

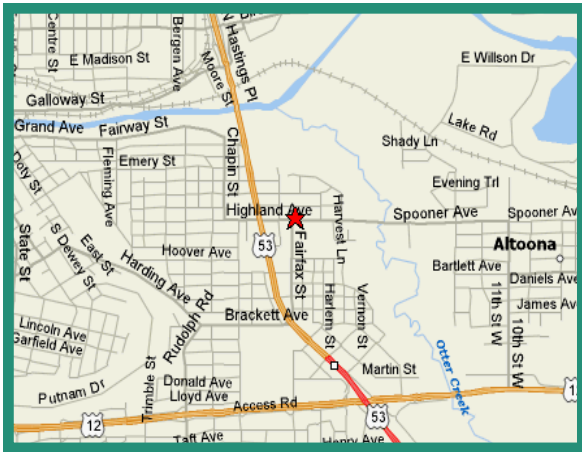
# MID TOWN PLAZA

Spoooner Avenue - Atloona, Wisconsin

**250 TO 3,000 SQUARE FEET AVAILABLE FOR LEASE**



**Flex Use—Retail/Showroom, Warehouse or Office**



**Easy Access at Signalized  
Intersection**

**Convenient Location on Major Highway  
Between Eau Claire and Altoona**



**Aerial View of Building**

**Mid States Development, Inc.**

475 Chippewa Mall Dr., Ste. 335  
Chippewa Falls, WI 54729

[www.midstatesdevelopment.com](http://www.midstatesdevelopment.com)

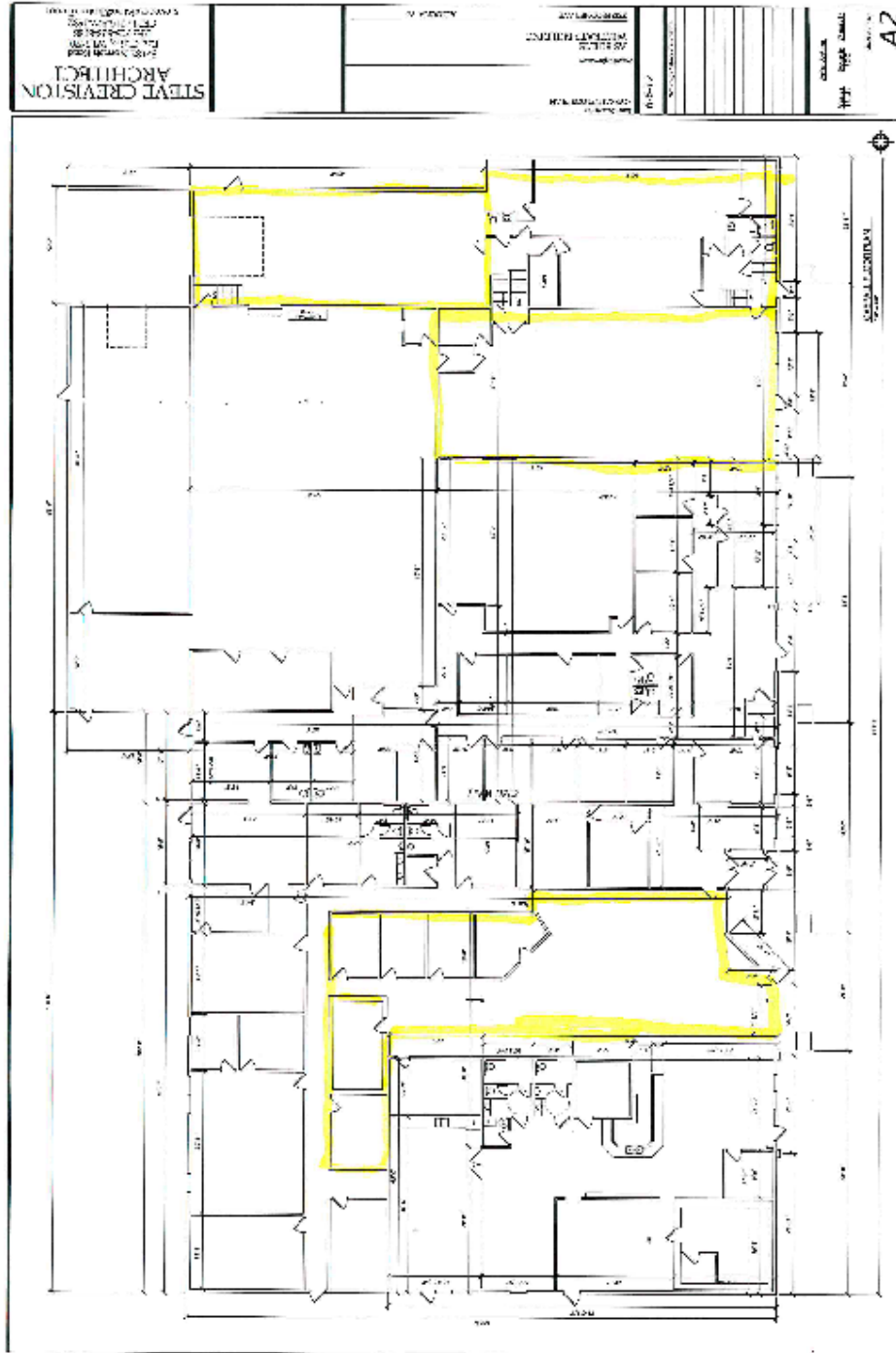


For More Information Contact:

**DAVID SANDERS**  
**715-723-2223 Ext 12**

[dsanders@midstatesdevelopment.com](mailto:dsanders@midstatesdevelopment.com)

# Floor Plan with Vacancies in Yellow



For More  
Information Contact:

**DAVID SANDERS**

**715-723-2223 EXT 12**



“Your Commercial Real Estate Specialists”

**Mid States Development, Inc.**

475 Chippewa Mall Dr., Ste. 335

Chippewa Falls, WI 54729

[www.midstatesdevelopment.com](http://www.midstatesdevelopment.com)