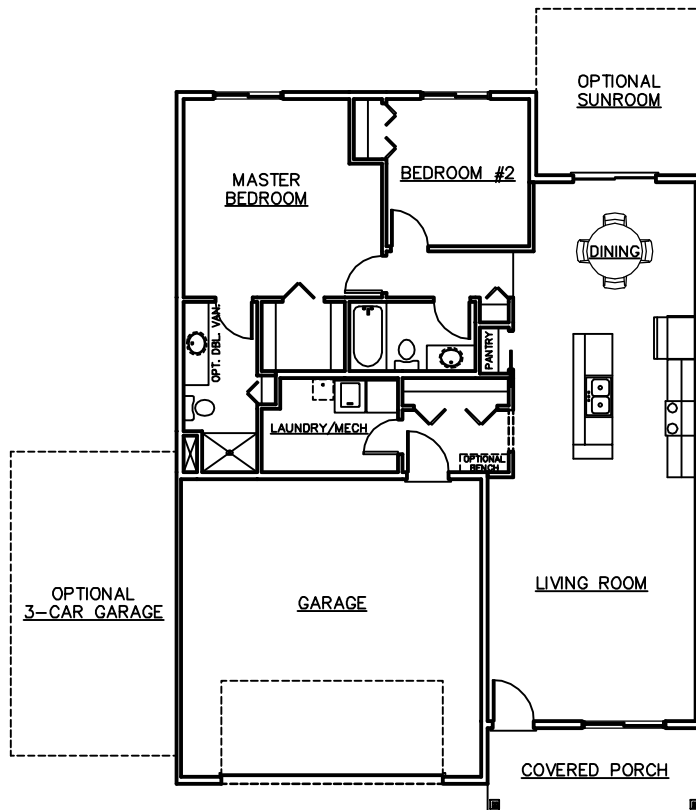


SOME OPTIONS MAY BE SHOWN



- * 2 BEDROOMS, 2 BATHROOMS
- * 1,280 SQUARE FEET
- * OPEN FLOOR PLAN
- * VAULTED CEILING
- * WALK-IN-CLOSET
- * COVERED FRONT PORCH

ROOM SIZES

KITCHEN	16' X 12'
DINING	11'-8" X 10'
LIVING ROOM	15' X 18'
MASTER BEDROOM	14'-4" X 14'-4"
BEDROOM #2	10'-4" X 10'-8"

