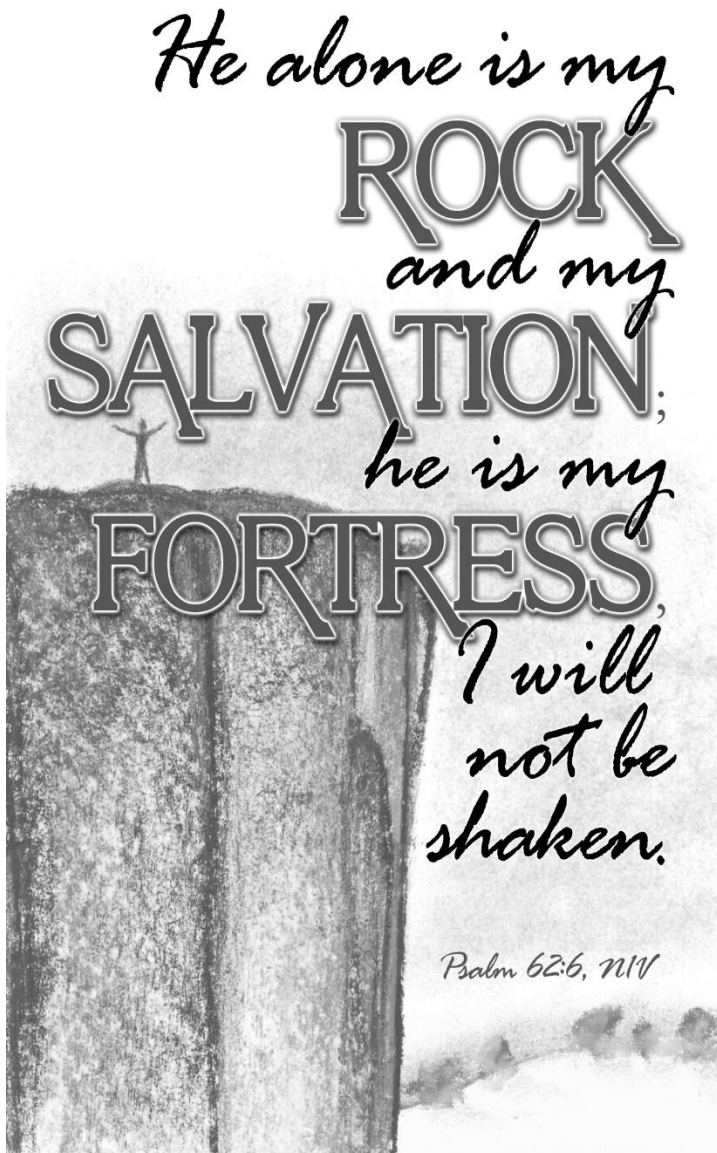




The Bethesda Beacon

Monthly Newsletter of Bethesda Evangelical Lutheran Church, Carlton MN
April 2022



In This Month's Beacon:

- *Pastor Seth's Beacon Article

- *Financial Update

- *Member News

- *Committee Updates

- *Information about the Meatball
Supper

- *And More



Jesus Week

I don't know about you, but I sometimes struggle to pay attention through all six weeks of Lent. Six weeks (plus Sundays!) can be a long time. Maybe that is why, when I heard about the idea of "Jesus Week", I got excited about it before I even knew completely what it was.

So, what is "Jesus Week"? Well, first, it takes place during Holy Week. Holy Week has always been the most important week in the Church Year. It is the week when we celebrate the triumphal entry, the first Communion meal, and Jesus's death and resurrection, all on the anniversary of the actual events.

What has sometimes happened to me, though, is that Easter ends up sneaking up on me. I might have lost track of my Lenten practice for that year sometime in week 3 or 4, or I might have been busy on Ash Wednesday and not started anything at all. So, by the time Easter comes around, it can feel like a regular Sunday, just with a few more flowers at the front! Lent is long, and it is easy to get lost in the middle or never get going in the first place.

Easter is always a joy, of course. And when it comes after a time of practicing our faith through prayer, scripture, or something else, it takes on so much more meaning. It helps us to grow and makes us prepared to *really* celebrate.

This is where "Jesus Week" comes in. *Jesus Week means making Holy Week something more than the week before Easter.* It means making Holy Week into a little Lent, by walking with Jesus in prayer or scripture.

Never got started with a Lenten practice this year? Got started, but lost track somewhere along the line (this is me many years!)? Started strong and still going?

Wherever you find yourself as we enter Holy Week, here is my invitation to you: *Make Holy Week into Jesus Week by committing to a simple, daily practice.* Allow God to bless you through the gift of prayer or Scripture.

Here are two possible ways to walk with Jesus through Holy Week:

1. *Pray each day.* If you don't pray regularly, both of these practices are a good place to start. If you do pray often, consider praying a new or old practice.
 - a. Slowly repeat the ancient Orthodox prayer, "*Lord Jesus Christ, Son of God, have mercy on me.*" If your mind wanders but your lips are still moving, that is still prayer – God may shape you in that time! Close with the Lord's Prayer after 5 minutes.
 - b. Write down your thoughts to God as prayers. Once you feel ready, pray the Lord's Prayer and go on your way.

2. *Read Scripture each day.* Here's a schedule that goes with our Luke year. Especially if you read this with kids, be sure not to leave out the Resurrection story!

Sunday [Luke 22:24-27](#) Who is the greatest?

Monday [Luke 22:7-20](#) The Last Supper

Tuesday [Luke 22:47-53](#) Jesus is arrested

Wednesday [Luke 22:54-62](#) Peter denies Jesus

Thursday [Luke 23:13-25](#) Pilate condemns Jesus

Friday [Luke 23:33-49](#) Jesus is Crucified

Saturday [Luke 23:50-56](#) Jesus is Buried

Easter [Luke 24:1-12](#) The Tomb is Empty

Oh, and here's one more invitation for you: find a way to join us, or another faith community, for worship during Holy Week! Out of all the days that we worship together, these are the most meaningful. Come, let's walk with Jesus together in Holy Week.

-Peace and blessing, Pastor Seth Wynands

Bethesda Staff

Seth Wynands, Pastor 424-337-0350

pastor@bethesdacarlton.org

Office 218-384-4501

Bobbie McCorison, Secretary,
Financial Secretary

Nita Davis, Bookkeeper/Accountant
515-890-1235

Nita@davisbooksandtax.com

Ronay Frank, Custodian

Anna Bong, Custodian

Cathy Dale, Accompanist

Bethesda Evangelical Lutheran Church

204 5th St – PO Box 210

Carlton MN 55718

Email: bethesda55718@msn.com

Website: www.bethesdacarlton.org

Synod's Site: www.nemnsynod.org

2022 Members of Bethesda Church Council

*President – Lynn Beatty

*Vice President – Deb Davis

*Secretary - Linda Newlon

*Treasurer - JoAnn Gustafson

Frank Curtiss

Debby Johnson

Dave Beatty

Jane Joki

Bethany Leseman

**If you have items that you wish to be addressed by council, contact a member of the Executive Committee, who sets the council agenda. You can keep up to date with church business by viewing the Council Meeting Minutes on the rotating bulletin board or view them on our website.*

Financial Update			
Year-to-date ending 01/31/2022			
	Actual	Budget	Over/(Under) Budget
Envelope giving	8097.00	8184.00	(87.00)
Non-pledged income	(3818.91)	375.00	(4193.91)
TOTAL INCOME	4278.09	8559.00	(4280.91)
Salaries/Compensation	7194.99	7698.98	(503.99)
General Office Expenses	512.02	776.16	(264.14)
Utilities	1073.77	806.67	267.10
Other Expenses	20.09	45.00	(24.91)
Benevolence Expenses	78.89	79.34	(0.45)
Evangelism Expenses	0.00	0.00	0.00
Property Expenses	31.43	69.17	(37.74)
Social Ministry	27.00	27.08	(0.08)
Worship Expenses	600.00	533.33	66.67
CYFM Expenses	114.30	58.34	55.96
TOTAL EXPENSES	9652.49	10094.07	(441.58)
Net Income	(5374.40)	(1535.07)	(3839.33)
Non-pledged income includes Loose offering, Special Services, Meatball supper, Sunday School, Interest Income, etc.			
Memorial money is not included in any of the figures above.			

Easter Garden: Providing an Easter Lily or Spring Flowers.

Please let the office know by April 11th if you are bringing a plant and who it is in "Honor of" or "Memory of" and have your plant(s) at the Church by 10 am on Sat, April 16th. Let's fill the Sanctuary with lots of beautiful plants to add to the Beauty of Christ's Resurrection!!

2022 Calendars for Inter Faith Care Center

Thank you to those who have donated 2022 calendars to be distributed to residents at Inter Faith Care Center, Carlton. The collection box is located in the Narthex of the church.

Update on Lutheran World Relief Projects

On Thursday, March 10, Bethesda, Zion and Our Saviors Lutheran Church members got together and put together **160 Personal care kits and 38 baby care kits.**

Personal Care kit items still needed: 20"x40" or 52"x27" bath, dark colored bath towels, nail clippers, sturdy combs, adult toothbrushes, in original packaging, bar soap, nothing with strong odor or Ivory soap, in original packaging.

Baby Care kit items needed: size 6-month to 24 month

Two lightweight cotton T-shirts

Two long- or short-sleeved gowns or sleepers 6 month or larger

Two receiving blankets

One jacket, sweater or sweatshirt with a hood, or include a baby cap

Four cloth diapers, flat fold preferred

Two pairs of socks 6-24 month

Two or three bath-size bars of gentle soap, no ivory, equaling 8-9 oz.

Two diaper pins or large safety pins, quilting pins

One hand towel, dark color recommended

Collection box is located in the narthex

Above kits will be distrusted by Lutheran World Relief around the world

BETHESDA MEATBALL SUPPER

SATURDAY, APRIL 30, 2022

SERVING 2:30-5:30 PM

SWEDISH MEATBALLS & GRAVY,
MASHED POTATOES, RUTABAGAS,
VEGETABLES, HOMEMADE BREAD,
COLESLAW/RELISH TRAY, DESSERTS,
INCLUDING RICE W/FRUIT SAUCE

ADULTS: \$12

CHILDREN 5 TO 10: \$7

CHILDREN UNDER 5 FREE

204 – 5TH STREET IN CARLTON

TAKEOUT AVAILABLE – TICKETS
AVAILABLE AT THE

DOOR “PRE-SALE TICKETS ALSO
AVAILABLE”

We will be purchasing food with
donations and Thrivent funds. There
will be a sheet listing what food items
can be purchased with various
donation amounts.

*Thank you to all of the volunteers
that have helped to make this event
possible!*



Community Easter Dinner

If you know someone in need of Easter Dinner, please tell them about us. This meal is free, and available for pick up on Saturday April 16th between 12:00 & 2:00 p.m. The meal is packaged and ready to be heated Easter Sunday.

*Each year we serve a community
Easter dinner to those experiencing
homelessness along with those
struggling with poverty.*

**Your \$ 4.00 donation guarantees an
Easter Dinner for an
individual. Your \$ 40.00 donation
guarantees and Easter Dinner for 10
people.**

*If you would like to donate please go
to hope@duluthhm.org*

Mark your calendars

- Mid-week Lenten services will be at 6 p.m. starting March 9th-April 13th and there will be no meal.
- Easter Sunday worship service, April 17th, will be at 9 a.m. and there will be no breakfast



***“LIVE SIMPLY....SO
OTHERS MAY SIMPLY
LIVE.”***

Please continue to donate to the Salvation Army, our local food shelf, on Carlton Ave. in Cloquet. Congregation members are asked to bring non-perishable food donations to

church. Gladys Sievert picks up the items and brings them to the food shelf in Cloquet each month. She reports that we are donating an average of 50 pounds a month. Keep up the good work! ***For the month of April our collection focus will be Hamburger Helper, Tuna Helper & soup.***

Monetary donations are also ***greatly*** appreciated as a donation like this can purchase much more with the resources the Salvation Army has access to. Thank you.



Carlton High School runs a program supplying personal hygiene items and healthy snacks to students in need. This program has been in place long before I started here four years ago. Although I am unsure what prompted the beginning, it is something that we continue to have a need for today.

Carlton Middle/High School serves students in grades 6-12. Our biggest needs are healthy snacks such as cracker sandwiches, granola bars, fruit strips, and trail mix. Each day approximately 5 students approach me privately to get a snack to keep their bodies and minds fueled. Some are low income students and some are kids who simply forgot to eat before coming to school. I do not ask "why,"

I just allow them to choose a snack and go about their day. Besides offering nutrition, I think this also builds bridges and supports student/staff relationships. The kids know they are cared about and they have a safe place to ask for help-of any kind.

Other than food supplies, we also keep a small variety of deodorant, toothpaste, toothbrushes, body wash, and feminine hygiene products on hand to give to students in need. Of all those items, deodorant and feminine hygiene products are the most requested.

Food items and hygiene items are requested directly from Amanda Radtke so that students are able to do so confidentially.

Any donation is greatly appreciated and will be passed on directly to our students. Thank you for your service to others!

Amanda Radtke MSW, LICSW
She/Her
Academic, Social and Emotional
Learning Advisor
Carlton High School



Member News



Celebrating April Baptismal Birthdays

Sharon Bragge, Vance Moench, Briar Mrozik, Kristal Hanson, Terry Radtke, Colin Emerson, Nathan Coady, Patricia Durkee, Brittany Dahl-Holm, Stacie Hopp, Todd Bryant, Craig Schmitz, Ross Soukkala, Lindsey Dahl-Holm, Wesley Harden, Liam Meagher, Makenzie Simula, Cassidy Sheda, Desiree Sheda, Molly Sheda, Jessica Betts, Shelby Nygren, Michael Lijewski, Merlea Mrozik, Spencer Thorman, Tanner Thorman, Curtis Marin, Myrna Postal, Lydia Kiehl, Terry Skutevik, Nevada Jo McCorison, Bernie Despot, Andrew Castle, Colton Clark, Melissa Clark, Sean Clark, Tanner Betts, Rick Johnson, Jackson Soukkala, Oliver Soukkala, Andrew Buller & Mark Vernon



Our deepest sympathy & prayers to the family of Bernice Price, Lorna Bryant & family for the loss of her mother Laura Wekseth, Duane Soukkala and family for the loss of his mother Elvina Soukkala, Stacy Colich for the loss of her father Eli Miletich & Jim & Cookie Jaakola for the loss of their daughter Jennifer Jaakola. God comfort and strengthen our hearts in hope in the resurrection through Christ.

We would like to extend sincere and heartfelt appreciation for all of your concern, thoughts, prayers and cards during the difficult months caring for and leading up to Ron's passing in January and memorial service in March. Pastor Seth and the kitchen crew did a wonderful job!!

We are grateful for such a loving church family.

Betty Peterson & Family

Social Ministry



Social Ministry will be hosting coffee in support of Camp on April 17th after Worship.

Worship

- Midweek Lenten services Will be at Bethesda with River's Edge invited to join us.
- April 10, Palm Sunday – will also be First Communion.
- April 14, Maundy Thursday- Service will be at 6 o'clock. There will be no service on Wednesday of that week.
- April 15, Good Friday – service will be at noon.
- April 17, Easter – service will be at 9 o'clock. There will be no Easter breakfast.

Children, Youth, Family & Education

April Storytime/Jesus Story video:

April 3rd – Storytime in the gathering space

April 10th – *No Family Worship* – **PALM SUNDAY**

April 17th – No Storytime- Easter Sunday

April 24th - Family worship – Jesus story video in the sanctuary with children's sermon

HAPPY EASTER



CYFED INFORMATION

- Camp and outdoor ministries – camp registration is open. The early, early bird is done – now just the early bird registration open
- The bishop's night went very well. Mixer questions were in the beginning followed by Bishop Amy telling the group about herself. Bethesda will continue to do this activity every year and will extend to the other Cloquet churches along with Salem and Elim.
- Mentoring started on Ash Wednesday, March 2nd. The night went well, and we had a good turnout of mentors. Please feel free to do your mentoring after the Wednesday night

Lenten service which starts at 6:00 PM in the church.

- The youth had an alternative activity this winter in place of the Middle School gathering. There was a group of 18 that went to the Lake Superior Zoo in Duluth on Saturday, February 26th. It was a beautiful weather day along with a great gathering time of family and friends.
- Bethesda did not have anyone attend the Cardia Deo retreat on Saturday, March 5, 2022.
- First Communion will be held later this spring.
- 4th & 5th grade Grow in Faith class will start on April 20th – May 25th. This is a 6-week class, and we have 4 students signed up.
- Stewardship Challenge for 10th & 11th graders will start on May 4, 2022.
- CYFED will be sending out Easter cards to pre-k through the 4th grade in April. We are also looking at another activity for the youth for Easter.

Ministering to our Bethesda Family

Please see the message below that was read in church on Sunday, February 13th. We want to reach out to everyone:

Please participate on Sunday's during coffee time. We are doing this every Sunday and it will only take a couple

of minutes to write a note letting someone know we are thinking about them. We need everyone's help to make this a success. Please think about writing a note.

Thank you!

We have been missing our friends. We are sending out messages of love and encouragement over the next few months and invite everyone to join us. We will start today, Sunday Feb. 13th. What we are asking, is that members of our congregation, reach out to our church family by sending out note cards every week. We have people that cannot attend due to health issues, congregation members watching from home due to COVID, youth that are not attending, and congregation members who left and have not returned. We want to offer our support to all these members and let them know that we care and are thinking about them.

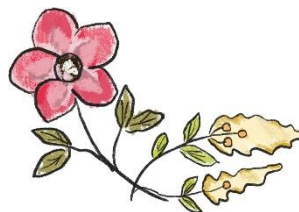
What will happen is we will have note cards available on the tables in the gathering space after church. The note cards will have envelopes attached. Each envelope will be addressed with a congregation members name and address. Please use the note card to write an uplifting message of support to let them know that we are thinking of them. Make sure the notes have their name and you sign the note, so they know who sent it.

These will be filled out during coffee time. It will only take a few minutes of your time to let someone know we are thinking about them, and that they are not alone. Once you're done, please put in the center of the tables and they will be collected and sent out. Please help us make someone's day a little brighter. Don't be shy! We hope you will join us in ministering to each other.

If you have any questions, please see JoAnn Gustafson

Thank you and God bless
Bethesda Lutheran Church

WELCA



Kettle River Conference Women of the ELCA Spring Gathering

Saturday April 22nd, 2022
9-noon

Bethlehem Lutheran Church Askov
Suggested lunch and expense
donation \$10

Registration begins at 9
Theme: Care of Creation

Keynote Speaker: Pr. David Carlson
Offering: Family Pathways Refuge
Network & WELCA Churchwide
Silent Auction

Bring your unit donation for Penny
Offering. Penny Offering from this

past year is for The Tree House, a youth center in Sandstone.

Synodical Love offerings can be brought to this Gathering in addition to Convention Fund and Convention Offerings.

Directions: 9318 Kirke Alle, Askov 55704

From I-35 take the Banning State Park exit north of Sandstone. Follow Hwy 23 east and turn into Askov on Brogade St. From Brogade, again turn east onto Bregnedulgade (by downtown station) and continue across the railroad tracks to Kirke Alle



Upcoming VLM Events:

Paddle Building

April 1-3
Camp Vermilion

Young Adult Ministry Fellowship

April 19, 6-9pm
Board & Brush

Camp Work Day* - Hiawatha

April 23

Celebration for Gretchen Bachman

April 24, 2-5pm
Camp Hiawatha

Camp Work Day* - Vermilion

May 14



Family Overnight~Camp Hiawatha

Friday April 22, 2022 6:30pm

Saturday April 23, 2022 3:00pm

Camp Work Day~Camp Hiawatha

Saturday April 23, 2022 8:00am-3:00pm

Camp Work Day is a time to prepare the site for our summer camping season and we can't do that without your help! To help ensure the health and safety of our volunteers, Covid protocols will be in place. Grab your favorite mask and plan to join us!

SCHEDULE

8:00 - 9:30 - Registration & breakfast

8:30 - 12:30 - The work happens!

12:30 - Lunch

1:30 - The work continues for as long as people are able to stay.*

For more information on any of these upcoming events go to www.vlmcamps.org or call the camp office at (800) 331-5148.

April 2022



SUN	MON	TUE	WED	THU	FRI	SAT
					1 11am Bible Study	2
3 9am Worship/ Storytime (FH) 10:15am Coffee/ Fellowship	4	5 8:30am TOPS 9am Making Mats for the Homeless 6pm Serenity Seekers	6 10am Hymn Planning Committee 6:00pm Mid-Week Lenten Worship Holy Communion Class	7 8:30am Office Staff Mtg 3:45pm Children, Youth, Family & Ed. Meeting	8 11am Bible Study	9
10 Palm Sunday 1 st Communion 9am Worship Storytime (Sanctuary) 10:15am Coffee/ Fellowship	11	12 8am TOPS 9am Making Mats for the Homeless 4:30 Worship Meeting 5:30pm Council Meeting 6pm Serenity Seekers	13	14 8:30am Office Staff Mtg 1pm Jam Group 6pm Maundy Thursday Worship	15 Beacon Deadline 11am Bible Study 12pm Good Friday Worship	16
17 Easter Sunday 9am Worship/ Storytime (Sanctuary) 10:15am Coffee/ Fellowship	18	19 8am TOPS 9am Making Mats for the Homeless 6pm Serenity Seekers	20	21 8:30am Office Staff Mtg	22 11am Bible Study	23
24 9am Worship/ Storytime (Sanctuary) 10:15am Coffee/ Fellowship	25	26 8am TOPS 9am Making Mats for the Homeless 5:30pm Women's Bible Study 6pm Serenity Seekers	27 6pm 4 th & 5 th Grade Grow in Faith Class	28 8:30am Office Staff Mtg 1pm Jam Group	29 11am Bible Study	30 12:30pm Meatball Supper Set- Up 2:30pm Meatball Supper 5:30pm Meatball Supper Clean-Up

Bethesda Lutheran Church
204 5th Street
P.O. Box 210
Carlton, MN 55718

Sunday Worship
9:00am
In House
And on Facebook
You can also view the Beacon
on our website at
bethesdacarlton.org or if you
would like to have a copy
mailed or emailed to you please
contact the office.



2022