



*As material for the  
construction of our  
building, I pledge  
the agility of  
my hands, the  
ability of my mind,  
and the integrity  
of my heart.*

**SEPTEMBER 2018**

## *Message From FM #246*

### **FM246 continues to celebrate 40 years of NAWIC!**

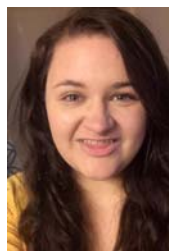
**We** may have celebrated our 40th Anniversary in June but we aren't done with our celebrations. Our Auction on November 15th will be our 40th Annual Auction, let's make this a memorable event for all. If you have ideas please bring share them with the planning committee - Melanie, Kara and Emily Herbranson.

**September's** meeting is "Strategic Planning for 2018-2019" on the 18th. I will be hosting the meeting at my house so we can relax and discuss the future of NAWIC FM246!! Start thinking about Construction Related Topics, Tours and More for programs and networking events for the coming year!!

**Renewal** notifications were sent out the beginning of August and are due by September 30th in order not be charged a \$25.00 late fee. Don't delay - RENEW NOW!!

**October 7th** we will be hosting the NEF Block Kids Competition at the Dakota Horizon Girl Scout Office in Fargo. If you know of anyone who would be interested in serving as a judge or help sponsor the event, please let me know. The number of attendees is limited to 50 so to make the event run smoothly we need a minimum of 10 judges.

**WELCOME** to our newest member, Lisa Breitenfield a Construction Management student at MSUM. We look forward to meeting you and learning all about your construction future!!



➤ **Renewal Notices have been sent out!! RENEW NOW!!**

DUE - SEPTEMBER 30TH

**Fargo-Moorhead, ND  
Chapter #246**

657-2nd Ave N Unit 763

Fargo, ND 58107

[nawicfm246@gmail.com](mailto:nawicfm246@gmail.com)

Website

[www.nawicfm246.org](http://www.nawicfm246.org)

Chartered - June 3, 1978

Find us on

**facebook**

## *In This Issue*

Message From FM246 .....	1
Calendar/Upcoming Events .....	2-3
Chapter Member Info .....	4
Regional & National Info.....	5
Committees / Calendar.....	6-8
NEF Information.....	9
Misc Info .....	10
Ads / Sponsorships .....	11
246 in Pics .....	12

*I feel the need... the need for*





2018

Sun	Mon	Tue	Wed	Thu	Fri	Sat
<b>4th Quarter + Membership Option Available</b> Planning / transition Meeting— (joint chapter board meeting In/Out) New Signature cards for bank / Installation of Officers Set-up Calendar - include Chapter/Regional/National info						1
2	3 	4	5	6	7	8
9 <i>Grandparent's Day</i>	10 <b>NAWIC Founders Day</b>	11	12	13	14	15
16	17	18 <b>Strategic Planning Meeting</b>	19	20	21	22 1st Day of Autumn 
23	24	25 <b>Chamber Women Connect</b>	26	27	28	29

30th on October Calendar | Happy Birthday - Lisa Thoreson

## Upcoming Regional/National Events

MIDWEST REGION ANNUAL FORUM - 2019	ANNUAL CONFERENCE	MIDWEST REGION 2018 FALL CONFERENCE
<div>More details to come!!</div>  <p>The Palmer House Hilton</p>	 <p><b>SAVE THE DATE</b> 64th Annual Meeting</p> <p>Watch for information about all the things to do &amp; see in Atlanta when you aren't attending the many seminars &amp; workshops that will be available to enhance your career in the construction industry!!</p>	 <p><b>Radisson Blu Mall of America</b> 2100 Killebrew Drive Bloomington, MN</p> <p><b>Early Bird Registration - \$150 (before 10/1)</b> <b>General Registration - \$175 (after 10/1)</b></p>
April 26-27, 2019 Chicago, IL	August 21 - 24, 2019 Atlanta, GA	October 26-27, 2018 Bloomington, MN



2018

Sun	Mon	Tue	Wed	Thu	Fri	Sat
Sep 30 Last Day of Fiscal Year Renewals Due!!	1 <b>** Have you Renewed?</b>	2	3	4	5	6
7	8	9	10	11 <i>Business After Hours</i>	12 PNW FC - San Jose, CA SA FC - Williamsburg, VA	13
14	15	16 18-19 Membership <b>KICK OFF</b>	17	18 <i>Happy Birthday Joanna</i>	19 PSW FC - San Diego, CA SE FC - Ft. Meyers, FL	20
21	22	23 Chamber Women Connect	24	25	26 MW FC - Bloomington, MN	27
28	29	30	31  Happy Halloween	➤ Audit ➤ Approve budget ➤ <b>**October 1st</b> - \$25 late fee applied to renewals		

## Chamber Networking Events

- **BUSINESS AFTER HOURS** - Held on Thursday night (bi-monthly)  
- Location as noted (4:30 - 7:00 PM)

October 11 - Holiday Inn Fargo

- **WOMEN CONNECT** - Locations vary - **3:30 - 5:00 pm** (Social hour 5:00 - 6:00 pm)

July 26 (Thurs) "Finding Your Lighthouse and Navigation Techniques for the Journey"; Presented by Debbie Stang, Midco

Aug 28 (Tues) "Mean Girls and Catfights: The Powers and Perils of Female Friendship"; Presented by Dana Bisignani, MSUM

Sep 25 (Tues) "Why Checking the Box is not Moving the Needle"; Presented by Carrie Brimhall, MSCTC President

Oct 23 (Tues) "Navigating the Leadership Journey"; Presented by Susan Jarvis, Vice President Operations Sanford Health

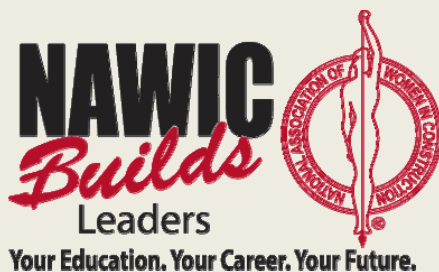
Nov 27 (Tues) "Gratitude Attitude: How to Make an Ordinary Life Extraordinary"; Presented by Trina Michels, NetSuite/Eide Bailly

For more information (location & cost) or to register for these events go to [www.fmchamber.com](http://www.fmchamber.com)



## 2018 / 2019 Officers

NATIONAL		LOCAL	
<b>President</b>	- Dove Sifers-Putman, CBT	<b>President</b>	- Amy Berg, CBT, CIT
<b>President Elect</b>	- Diane Mike, CBT	<b>Vice President</b>	- Melanie Nordhougen
<b>Vice President</b>	- Anne Pfleger, CIT	<b>Secretary</b>	- Kara Skarphol
<b>Secretary</b>	- Jill Hanson, CIT	<b>Treasurer</b>	~ Emily Herbranson
<b>Treasurer</b>	- Doreen Bartoldus	<b>Director(s)</b>	~ Suzi Retzlaff ~ Lisa Thoreson
<b>IPP</b>	- Catherine Shoenenberger	<b>IPP</b>	



**If you have anything you would like added to the Newsletter:**

Please contact: Amy Berg:

Phone: 218-234-6633  
(leave message)

Email: [aberg.nawic@yahoo.com](mailto:aberg.nawic@yahoo.com)

### Midwest Region Information

#### Director

**Jodie A. Wiemerslage**  
Hunt Electric Corporation  
6301 Bandel Rd. NW.; Suite 201  
Rochester, MN 55901  
Direct# 507-251-7522 (home)  
Fax #: 501-281-3995  
Email: [jwiemerslage@huntelec.com](mailto:jwiemerslage@huntelec.com)

#### WEBSITE

Visit the regional website at

**MIDWEST REGION** -  
[www.nawicmidwestregion.org](http://www.nawicmidwestregion.org)

#### FACEBOOK

Connect with us on Facebook at  
[facebook.com/groups/nawicmidwest](https://facebook.com/groups/nawicmidwest)

#### NAWIC Office Contact Info

NAWIC  
327 S. Adams St.  
Fort Worth, Texas 76104  
Phone - 800-552-3506  
Fax - 817-877-0324

#### WEBSITE

Visit our national website at  
[www.nawic.org](http://www.nawic.org)

#### FACEBOOK

Connect with us on Facebook at  
[facebook.com/nawicnational](https://facebook.com/nawicnational)



## Chapter Member Information

### Amy Berg, CBT, CIT

Joined - March 28, 1989

Innovative Window & Door Service, LLC  
416 44th Ave S  
Moorhead, MN 56560  
218-234-6633  
aberg.nawic@yahoo.com

### Lisa Breitenfield

Joined - August 1, 2018

(MSUM Student) /  
Climate Engineered Structures  
3500 38th Ave S #308  
Fargo, ND 58104  
847-624-4607  
lisa.breitenfield@gmail.com

### Emily Kautzman

Joined - August 1, 2017

(NDSU Student) / MEI Technologies  
1951 Dakota Dr N #120  
Fargo, ND 58102  
701-214-3516  
emilykautzman@gmail.com

### Paula Klein

Joined - May 1, 2018

SMARTT Interior Construction, LLC  
PO Box 2002  
Fargo, ND 58107  
701-630-0780  
paula@smartt-ic.net

### Melanie Nordhougen, LEED AP

Joined - October 1, 2009

Mortenson Construction  
3009 37-1/2 Ave S  
Fargo, ND 58104  
701-799-5105  
melanie.nordhougen@mortenson.com

### Suzi Retzlaff

Joined - October 1, 2006

Empire Engineering  
1553 1st St  
West Fargo, ND 58078  
701-212-8484  
retzlaff@hotmail.com

### Kara Skarphol

Joined - July 1, 2017

Benjamin Custom Homes, LLC  
5878 Autumn Dr  
Fargo, ND 58104  
701-793-3287  
kskarphol.bch@gmail.com

### Joanna Slominski, LEED AP

Joined - May 1, 2014

Mortenson Construction  
700 Meadow Lane N  
Minneapolis, MN 55442  
701-566-2460  
joanna.slominski@mortenson.com

### Kris Thompson

Joined - July 1, 2017

Fabricators Unlimited  
828 NP Ave  
Fargo, ND 58102  
701-235-1185  
kris@fabsup.net

### Lisa Thoreson

Joined - July 1, 2017

Moorhead Electric Inc. (MEI)  
3451 University Dr S  
Fargo, ND 58104  
701-212-9540  
lthoreson@moorheadelectric.com



### Emily Herbranson

218-341-7847

herbransonemily@gmail.com





## Committee Reports

### MEMBERSHIP (RECRUITMENT & RENEWAL) | PR & MARKETING (COMMUNICATIONS/PUBLICITY)

*Do you know anyone who is employed in one of the many facets of the construction industry from entry level to CEO's of the companies? Invite them to join us for our next Membership Meeting/Program to learn more about NAWIC and the opportunities that are available to help them learn more about themselves and the construction industry.*

**18-19 National Goals - 85% retention with 20% growth per chapter.**

The first Membership & Marketing 2018-2019 Power Hour was held on Tuesday, September 4th. The topic for this call was Building Sponsorships. If you were unable to attend you can go to the NAWIC website and watch the presentation at any time. The Membership & Marketing Power Hour is a one-hour session scheduled for the first Tuesday of every other month at **1:00 PM CST** to discuss Membership and Marketing strategies for NAWIC.



Topics for the upcoming sessions are:

- ◆ **NOVEMBER** - Sustaining The Value and Preparing for Forum 2019
- ◆ **JANUARY** - Re-Defining Engagement in Preparation for WIC Week
- ◆ **MARCH**—Bridging the Generational and Gender Gaps in the Industry
- ◆ **MAY**—What are we doing right and wrong with Membership?
- ◆ **JULY**—Gear up for Annual Conference

The competitions for the year are:

- ◆ **MEMBERSHIP - RECRUITMENT** - Chapters that recruit the most members from 07/01/18 to 06/30/19 with special consideration made for chapters making their 100% national membership goal by 03/01/19.
- ◆ **MEMBERSHIP - RETENTION** - Chapters that have the most retention from 07/01/18 to 06/30/19 with special consideration for chapters making their 85% retention goal by 03/01/19.
  - ◆ Two awards will be presented for each category - Chapter size 1-25 and Chapter size 26+
- ◆ **MARKETING - WEBSITE CONTEST** - Create a website for your chapter. Websites will be judged using the following categories: 1. User Friendly 2. Originality 3. Content 4. Joining Information 5. Contact Information
- ◆ **MARKETING - SOCIAL MEDIA CONTEST** - Share your Facebook Insights and your Facebook URL that will be judged for 1. Growth 2. Engagement 3. Content on Page
  - ◆ Submissions for each contest will be due no later than June 1, 2019

**There is also Video Contest:** We are asked to create a video to show how NAWIC Powers You, Your Chapter and Your Community. The contest is to encourage all chapters to use videos as membership and marketing Tools. **#NAWICPowerPlay**

### \$CHOLAR\$HIP - DUE TO NFSF BY FEBRUARY 28TH!!!

**NFSF:** *Scholarship applications for the Onie Loeks Memorial Scholarship are due to NFSF by February 28th, each year. Information for the scholarship is available online at: <http://www.nawic.org/nawic/NFSFScholarships.asp>*

➤ *If you know anyone who is enrolled in a construction related program at any of the local colleges or universities please let them know they should apply for a scholarship through NFSF and the chance to receive either an Onie Loeks Memorial Scholarship and/or one from the Foundation.*



### BYLAWS / STANDING RULES - NATIONAL CHAIR: *DEB LESAR*

Each member needs to go to the NAWIC website and download the most current copies of the NAWIC operational manual which contains the current NAWIC bylaws.

➤ **We will be reviewing and updating our Chapter Standing Rules at the meeting in September.**

**DUTIES:** Responsible for preparation and presentation of all Bylaw and Chapter Standing Rule amendments.

## Committee Reports

### WAYS & MEANS (FUNDRAISING)

#### Sponsorship Opportunities

Information packet is available on the chapter website: [www.nawicfm246.org](http://www.nawicfm246.org)

**Auction** - Our 40th Annual Auction is scheduled for **November 15, 2018** at the Holiday Inn.

**DUTIES:** Responsible for all Chapter fundraising activities. Subcommittees will oversee annual activities such as the Annual Auction, Golf Tournament and/or other activities.

**IMPORTANT** - do you have any ideas for Chapter Fundraisers?

### FINANCE - AUDIT / BUDGET

**AUDIT:** The 17-18 audit will be done after the end of the fiscal year on September 30th.

**BUDGET:** The 17-18-19 budget will be presented & discussed at the September meeting.



### PARILIAMENTARIAN

**DUTIES:** Will help the President keep the meeting running smoothly using Roberts Rules Newly Revised guidelines.

### NAWIC EDUCATION FOUNDATION (NEF) - SEE PAGE 10 FOR MORE DETAILS

**DUTIES:** Will promote the NAWIC Education Foundation (NEF) programs within the Chapter and Community and also gain financial support for these programs which include Block Kids, Design/Drafting contests for students and the adult educational programs (see info on page 10)

### WIC WEEK - MARCH 3RD - 9TH, 2019

**Save The Dates**

March 3 - 9, 2019 WIC Week  
April 1, 2019 - Recap Form Due



**1ST PLACE AWARDS** will be presented for each of the following Categories:

**PR & MARKETING** - newspapers, magazine ads, billboards, posters, radio & TV promotions, NAWIC Attire, Pins worn at events, Membership Drive, Social Media Campaign #WICWeek2019 and More!!

**CHAPTER COLLABORATION** - Joint Chapter/Association Meetings, Joint Chapter/Association Events, Joint Region/Association Events and More!!

**COMMUNITY OUTREACH** - Chapter Fundraising, Food or Supplies Collection, Blood Drive, Habitat for Humanity and More!!

**EDUCATION** - Lunch N Learn, Jobsite Tours, Career Fairs, NAWIC 101 and More!!

### PROFESSION DEVELOPMENT & EDUCATION

See page 9 for monthly Membership Meetings & Program Schedule

## Committee Reports



Professional Development  
and Education  
Program

### PROFESSION DEVELOPMENT & EDUCATION -

**DUTIES:** Responsible for all arranging monthly meeting programs and provide program information to the Secretary (for thank you notes), Media Relations and Newsletter. The Chair may also submit seminar recommendations to Ways and Means.

♦ Chapter's must hold 10 Membership meetings per year and conduct Association business at 4 of them.

**IMPORTANT** - do you have ideas for Programs, Seminars and other items to promote NAWIC?

### 2018 - 2019 Monthly Meeting/Program Schedule

Sept. 14: Board Meeting

Sept. 18: **Member Meeting** (End of year recaps) and Strategic Planning for 18-19

October 7

**Block Kids Competition w/Girl Scouts**

Oct. 12:

Board Meeting

October 16

18-19 Membership

**KICK OFF**



Oct. 26-27<sup>th</sup>

**MWR Fall Conference; Bloomington, MN**



Nov. 9:

Board Meeting

**November 15<sup>th</sup>**

**40<sup>th</sup> Annual Auction** (Thursday)



Dec. 14:

Board Meeting

**December 18**

**Membership Event**

Jan. 11:

Board Meeting

**January 15<sup>th</sup>**

**Membership Event**

**Jan. 22<sup>nd</sup> – Chamber - Women Connect 5<sup>th</sup> Anniversary Event (Sold Out)**

Feb. 15:

Board Meeting

**February 19<sup>th</sup>**

**Membership Event**

**Feb. 22<sup>nd</sup>-24<sup>th</sup>**

**HBA Home & Garden Show**

**March 3<sup>rd</sup>-9<sup>th</sup>**

**WIC Week**

**March 7th**

**Member Networking Event**

Mar. 15:

Board Meeting

Apr. 12:

Board Meeting

**April 16<sup>th</sup>**

**Membership Event**

**Apr. 26-27<sup>th</sup>**

**MWR Annual Forum; Chicago, IL**

May 10:

Board Meeting

**May 21<sup>st</sup>**

**Membership Event**

Jun. 14:

Board Meeting

**June 18<sup>th</sup>**

**Membership Event**

Jul. 12:

Board Meeting

**July 16<sup>th</sup>**

**Membership Event**

Aug. 9:

Board Meeting

**August 20<sup>th</sup>**

**Membership Event**

**Aug. 21-24<sup>th</sup>**

**Annual Conference; Atlanta, GA**

Sep. 13:

Board Meeting

**September 17<sup>th</sup>**

**Member Event (Strategic Planning)**



**T  
o  
u  
r  
s  
  
S  
p  
e  
a  
k  
e  
r  
s  
  
H  
a  
n  
d  
s  
-  
o  
n**





## Educating the Construction Industry Today . . . and Tomorrow

### NAWIC Education Foundation

1800 Pembroke Drive, Suite #300  
Orlando, FL 32810

NEF Administrator - Patti Susko

Phone #: 407-667-3417

Toll Free: 866-277-2883

Email: nawicedu@gmail.com

Website: www.nef-edu.org

### ADULT EDUCATION PROGRAMS

#### Certified Construction Associate (CCA) 6-parts

- Construction Document Technician (CDT)
- Estimating & Scheduling Practitioner (ESP)

#### Construction Industry Technician (CIT)

#### Construction Industry Specialist (CIS)

#### Construction Bookkeeping Technician (CBT)



Grades K - 6



Grades 8 - 12

Formerly known as  
Accessory Structure  
Project (ASP)



High School Division  
Grades 9 -12

College Division  
Freshman - Senior

### Youth Programs

#### Design Drafting



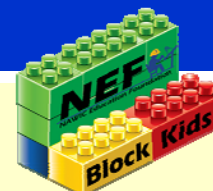
*The 2018-2019 problem has been Announced!!*

#### HIGH SPEED STUDY ZONE

A safe place for students to go in the evening that will allow them access to a high-speed internet connection for studying and completing schoolwork.

The information has been sent out to the are high schools and colleges with a registration date of December 15, 2018 for any students planning to participate.

#### Block Kids



**Sunday, October 7th, 2018**

GSDH Service Center  
1002 43rd St S  
Fargo, ND 58103

**Girl Scouts - Dakota Horizons**  
Kindergarten - 5th grade

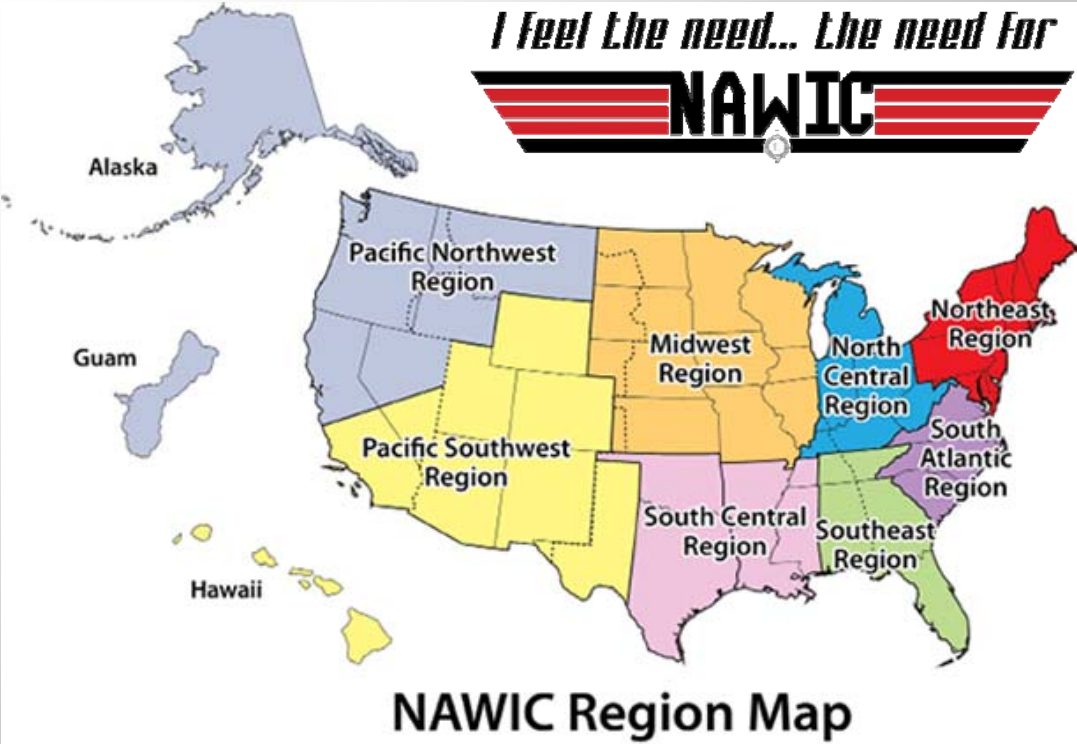
*Become an NEF Ambassador... Would you like to help promote NEF to all of the Construction Industry?*

Ambassadors will receive:

- A **bronze pin** for completing **one** item,
- A **silver pin** for completing **two** items, and
- A **gold pin** for completing **three** items or more.



The criteria to become a NEF Ambassador and the nomination form are available on the NEF website at [www.nef-edu.org](http://www.nef-edu.org).



**Palmetto  
Chapter of SC  
#385**

South Atlantic  
Region  
Chartered  
August 28th

Midwest	666	North Central	559
Northeast	533	Pacific Northwest	528
Pacific Southwest	599	South Atlantic	451
South Central	702	Southeast	632

Member Since




**THE CHAMBER**  
FARGO MOORHEAD WEST FARGO

MEMBER 2014


**CORE PURPOSE**  
TO ENHANCE THE SUCCESS  
OF WOMEN IN THE  
CONSTRUCTION INDUSTRY.

**CORE VALUES:**


- BELIEVE
- PERSEVERE
- DARE



MEMBER



NORTH DAKOTA RETAIL



LUMBERMEN'S ASSOCIATION

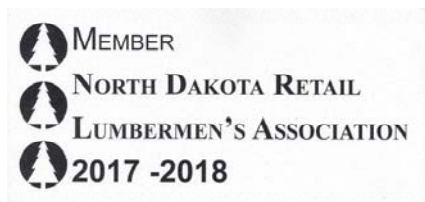
2017 -2018



## Chapter #246 Sponsors



INNOVATIVE WINDOW  
& DOOR SERVICE, LLC



Mortenson  
Construction



40th  
Anniversary  
Sponsors



**BRONZE:**

- Dede Hughes; Past NAWIC EVP
- Empire Engineering (Suzi Retzlaff)
- NAWIC- Gr. Sioux Falls, SD #237

### Sponsorships Available:

#### Sponsorship Levels:

- \$350 - Platinum Level
- \$250 - Gold Level
- \$150 - Silver Level
- \$ 50 - Bronze Level
- Additional Supporter (Specify Amount)

#### Events:

- Auction Fundraiser
- Block Kids
- Design Drafting Competition
- WIC Week Event (To be determined)
- Networking Event (To be determined)

For complete sponsorship details and the commitment form go to the chapter website at [www.nawicfm246.org](http://www.nawicfm246.org).



# 2018 Annual Conference

August 15-18, 2018  
Orlando, Florida



**NAWIC**  
NATIONAL ASSOCIATION OF  
WOMEN IN CONSTRUCTION



**CHAPTER SALES**  
SF237 / FM246



**OPENING  
RECEPTION**



**CHAPTER  
AWARDS**



**KEYNOTE  
SPEAKERS**



**FIRST TIMER  
MENTOR/MENTEE**



**THE DAKOTAS**  
GR. SIOUX FALLS / FARGO-MOORHEAD



**DIANE MIKE & I**  
AT WORK  
AND  
AT PLAY



**MIDWEST  
REGION**