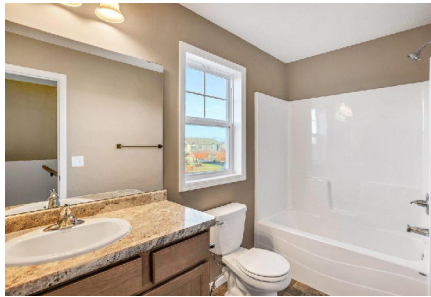


# HERITAGE

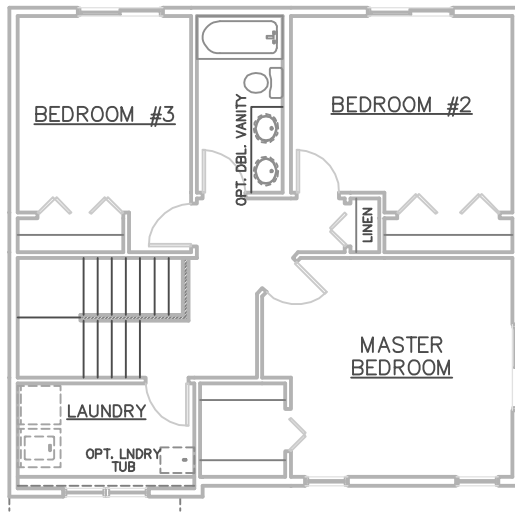


PHOTOS OF SIMILAR, PREVIOUSLY FINISHED HOME

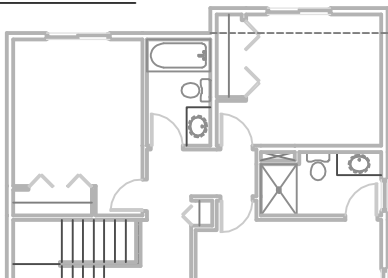


SOME OPTIONS MAY BE SHOWN

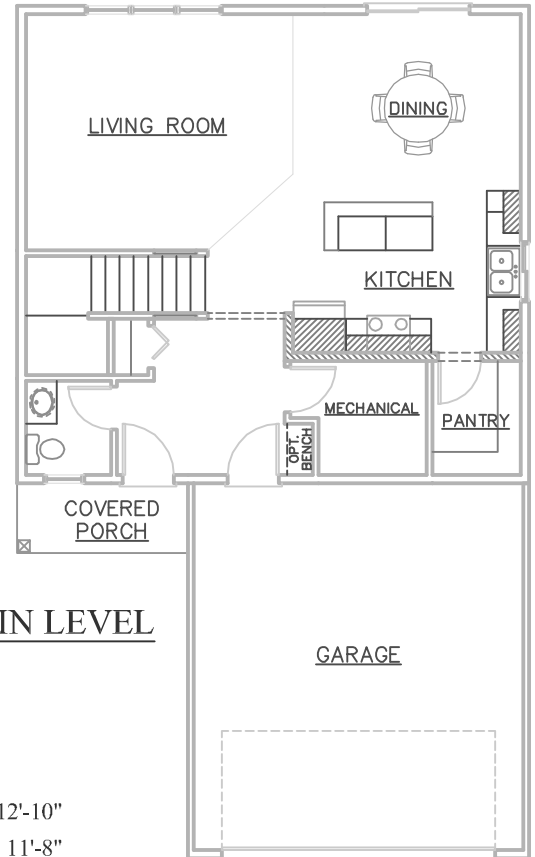
## UPPER LEVEL



## OPTIONAL 2ND BATH



## MAIN LEVEL



## ROOM SIZES

MASTER BEDROOM	14'-8" X 12'-10"
BEDROOM #2	13' X 11'-8"
BEDROOM #3	10'-2" X 11'-8"
LIVING ROOM	16' X 14'
DINING	13' X 11'
KITCHEN	13' X 10'

- \* 3 BEDROOMS, 1-1/2 BATHROOMS
- \* 1,680 SQUARE FEET
- \* OPEN FLOOR PLAN
- \* WALK-IN PANTRY
- \* WALK-IN CLOSET
- \* COVERED FRONT PORCH



3475 Vermillion Street, Suite 101 ~ Hastings, MN 55033 ~ 651.437.3700 ~ [www.gregjhomes.com](http://www.gregjhomes.com)

Plans and specifications are subject to change without notice. Copyright Greg J Homes of Hastings Inc. 2024