

No lake access from Resort Please do not trespass

Hector Falls
Seneca Lake



Private Residence
Please Do Not
Trespass

Waterfalls

Walking Trails

Lake View Cabins

P Parking available at each cabin

Lakeside resort



3812 bistro

Southern property boundary Please do not trespass

This area not to scale



Fired up daily!
weather permitting

Fire Pit

NO PARKING
ACTIVE DRIVEWAY

NO PARKING



UNLOADING ZONE



Gazebo

Continental Breakfast
daily 7 am - 10 am

Creekside Cabins

- 9
- 10
- 11
- 12
- 14
- 15
- 16



Garden Cabins

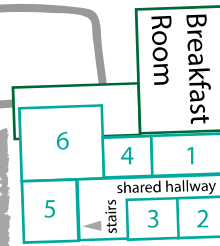
- 19
- 17
- 18

Fire Ring



3812 bistro
11am - 10 pm daily

★ Reception
→ CHECK-IN



State Highway 14

Watkins Glen 3 miles →