



VIVIAN LINDEMANN SASSI

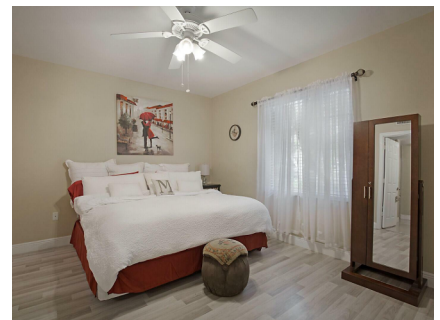
Lic. Real Estate Broker

Office Phone: (305) 974 8507

Agent Phone:(786) 859-3515

E-mail: [vivian.sassi@sasco-realty.com](mailto:vivian.sassi@sasco-realty.com)

**SASCO**  
**REALTY**



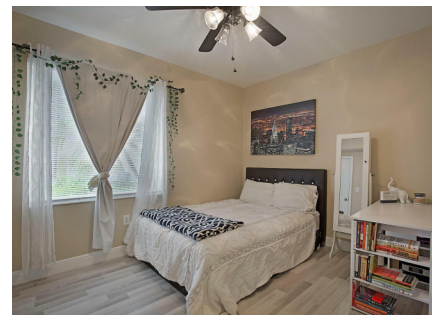
6511 Emerald Dunes Dr. #108

West Palm Beach, FL 33411

**\$2,800**

- Bedrooms: 2
- Bathrooms: 2
- Sq.Ft. 1,262
- Year built: 2006
- Parking Space: 2
- Balcony: yes
- Gym: yes
- Pool: yes

RARELY ON THE MARKET GRAND SYCAMORE MODEL WITH GARAGE! This turn key, updated, first floor, 2bed/2bath corner condo with an attached, oversized one car garage is ready to impress! The Grande Sycamore model is the largest of the 2 bedroom models! Features include 24" porcelain tile in main living areas, contemporary wood laminate floors in both bedrooms, open concept split bedrooms, large walk in closets in both bedrooms, separate laundry room and pantry with full size washer and dryer. Built ins and elegant crown molding in living and dining areas. Spacious kitchen offers granite counters, modern cabinets and stainless steel appliances. Large master bedroom has ample space for all furniture styles and the large en-suite bathroom features a soaking tub and walk in glass door shower



[www.sasco-realty.com](http://www.sasco-realty.com)