

LARAMIE

720 MARIE COURT

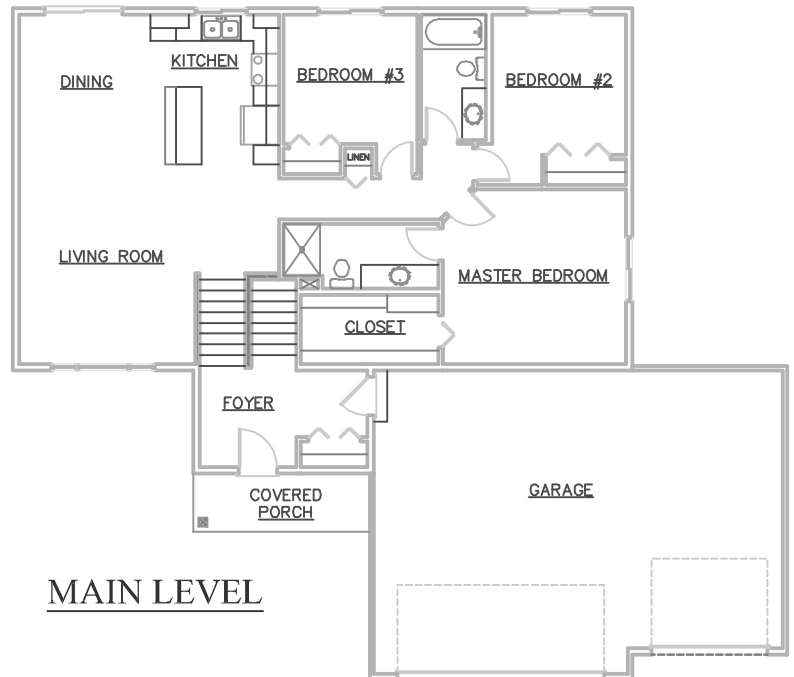
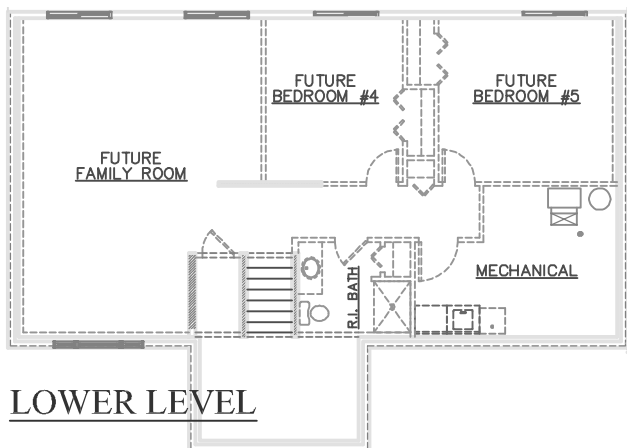


PREVIOUSLY BUILT HOME
SOME OPTIONS MAY BE SHOWN

ROOM SIZES

MASTER BEDROOM	14'-2" X 13'-6"
BEDROOM #2	10'-4" X 10'-10"
BEDROOM #3	10'-4" X 10'
LIVING ROOM	13'-8" X 15'-5"
DINING	11'-2" X 11'-7"
KITCHEN	9' X 11'-7"
FUTURE REC ROOM	17' X 24'-6"
FUTURE BEDROOM #4	12' X 12'-6"
FUTURE BEDROOM #5	13'-8" X 12'-6"

- * 3-5 BEDROOMS, 2-3 BATHROOMS
- * 1,456 - 2,423 SQUARE FEET
- * OPEN FLOOR PLAN
- * VAULTED CEILING
- * HUGE MASTER WALK-IN-CLOSET
- * COVERED FRONT PORCH
- * LARGE KITCHEN ISLAND
- * WALKOUT BASEMENT



3475 Vermillion Street, Suite 101 ~ Hastings, MN 55033 ~ 651.437.3700 ~ www.gregjhomes.com

Plans and specifications are subject to change without notice. Copyright Greg J Homes of Hastings Inc. 2023