



Honey Bee Diseases & Pests

Spring is coming



Apple Blossom Time



Healthy Brood



Pearly White Larva

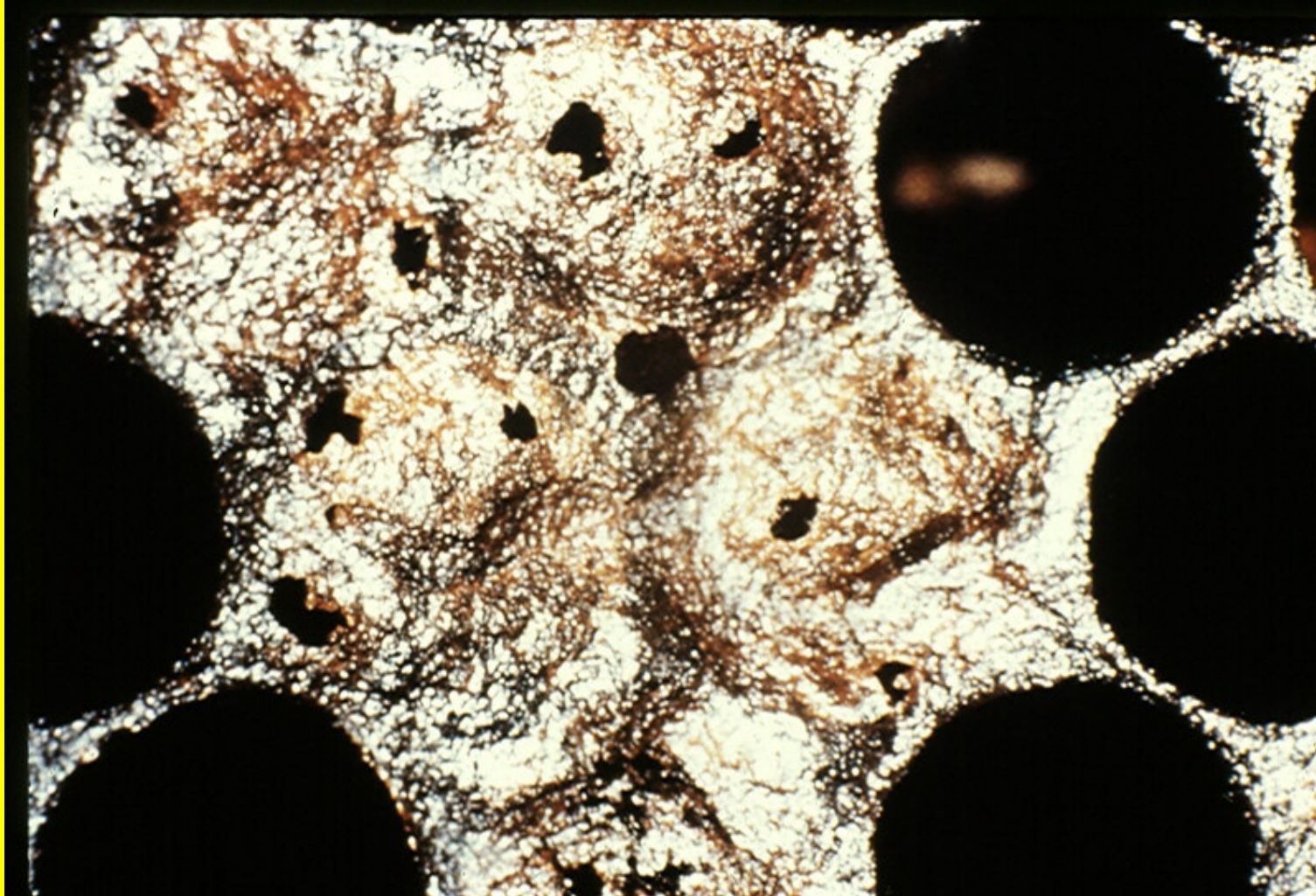


Spotty brood, sunken cappings



American Foulbrood (AFB)

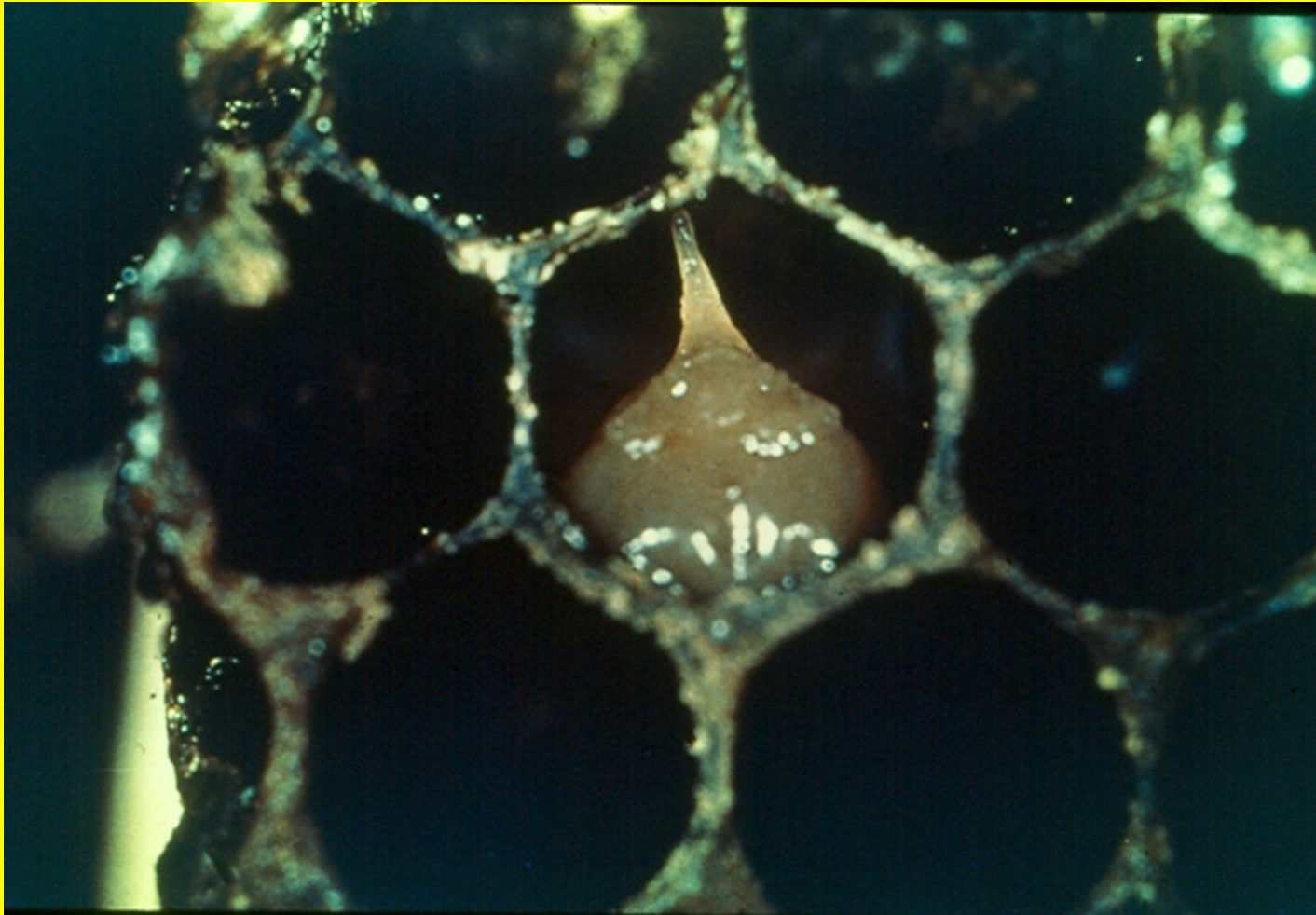
Perforated Cappings



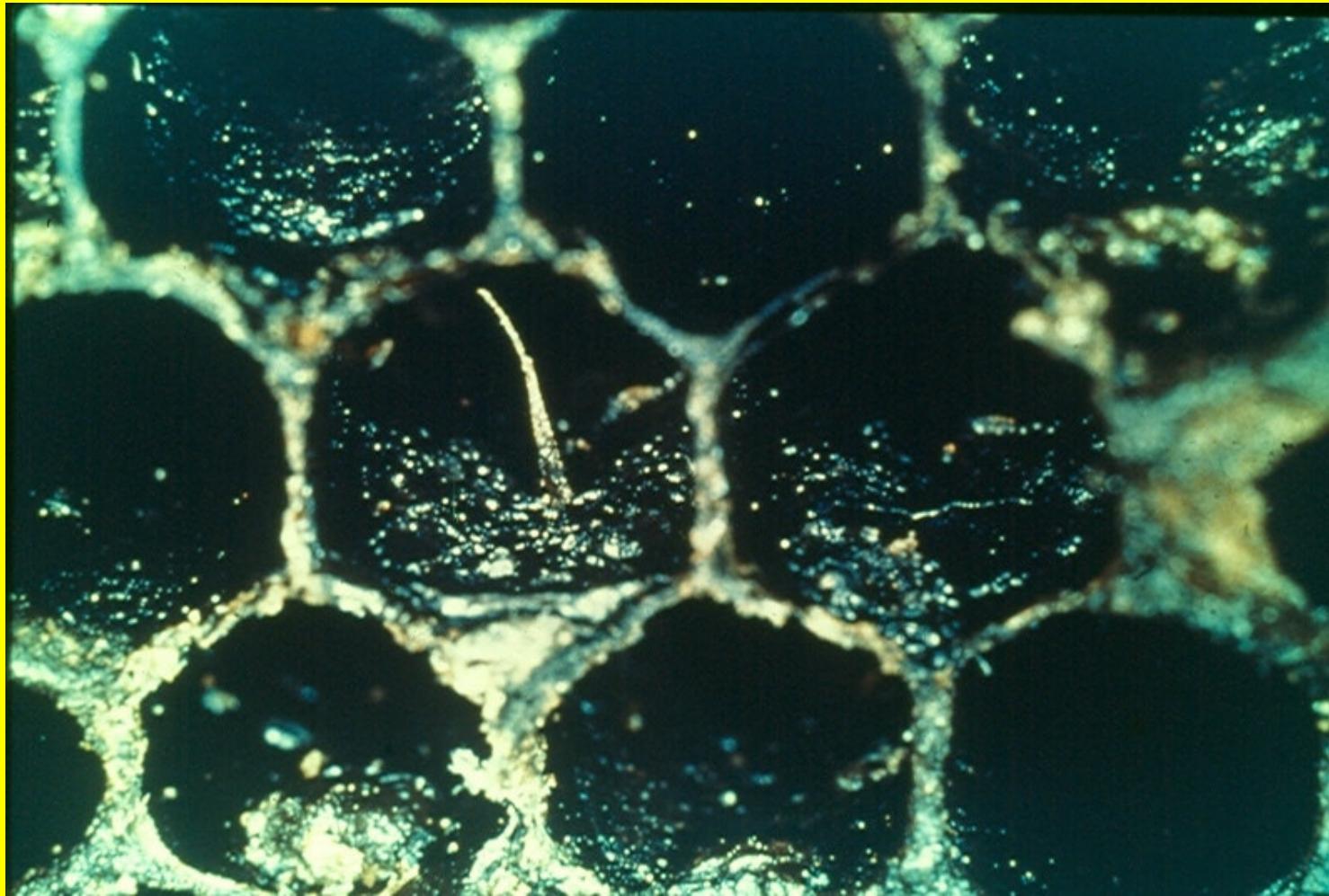
Ropiness



Pupal “Tongue”



Dried Pupal “Tongue” & Scale



Absolute Final Treatment



No follow up treatment required!



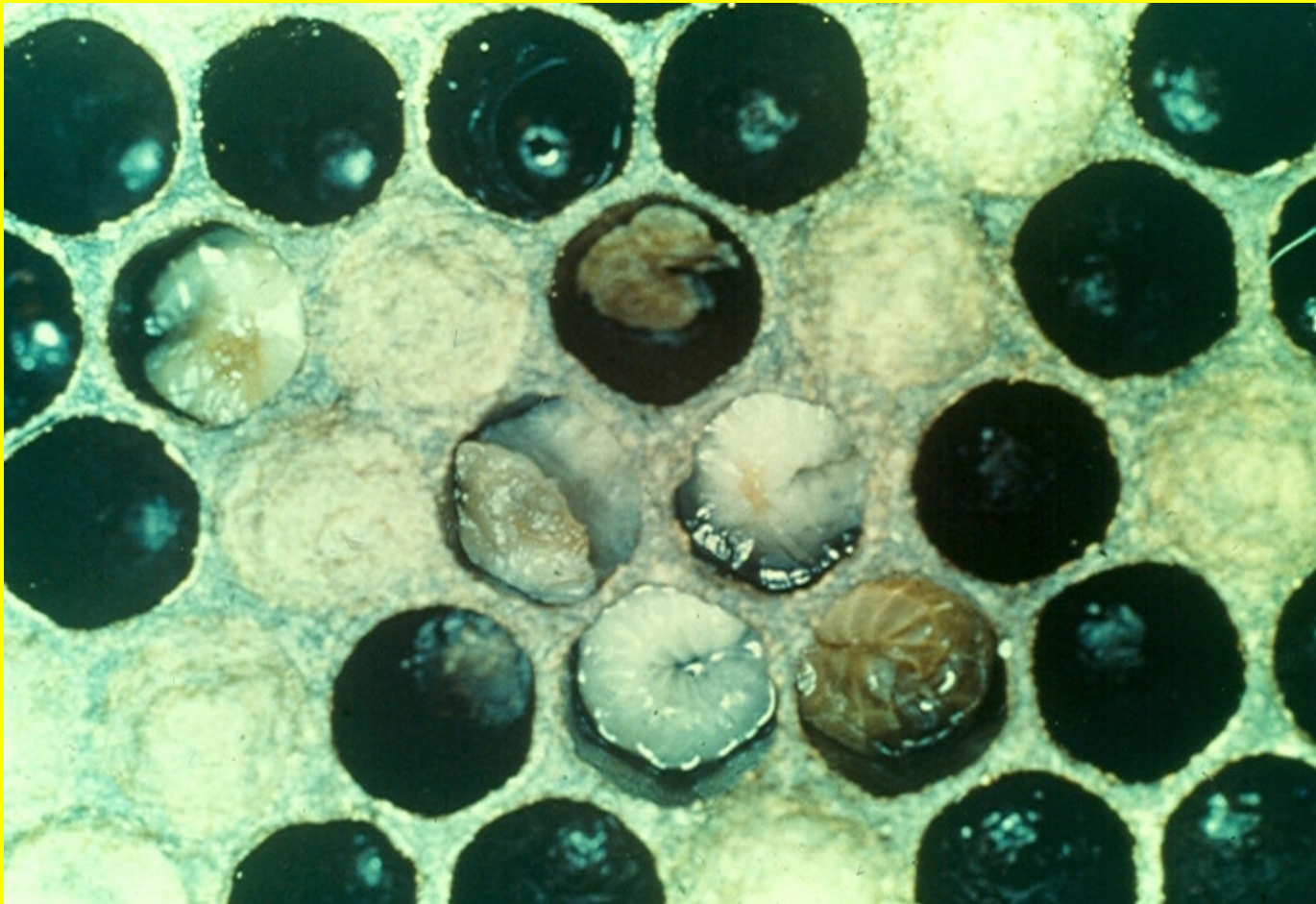


European Foulbrood (EFB)



Infected Larva

Twisted & C-Shaped Larvae



Chalkbrood



Chalkbrood “mummies”



Nosema



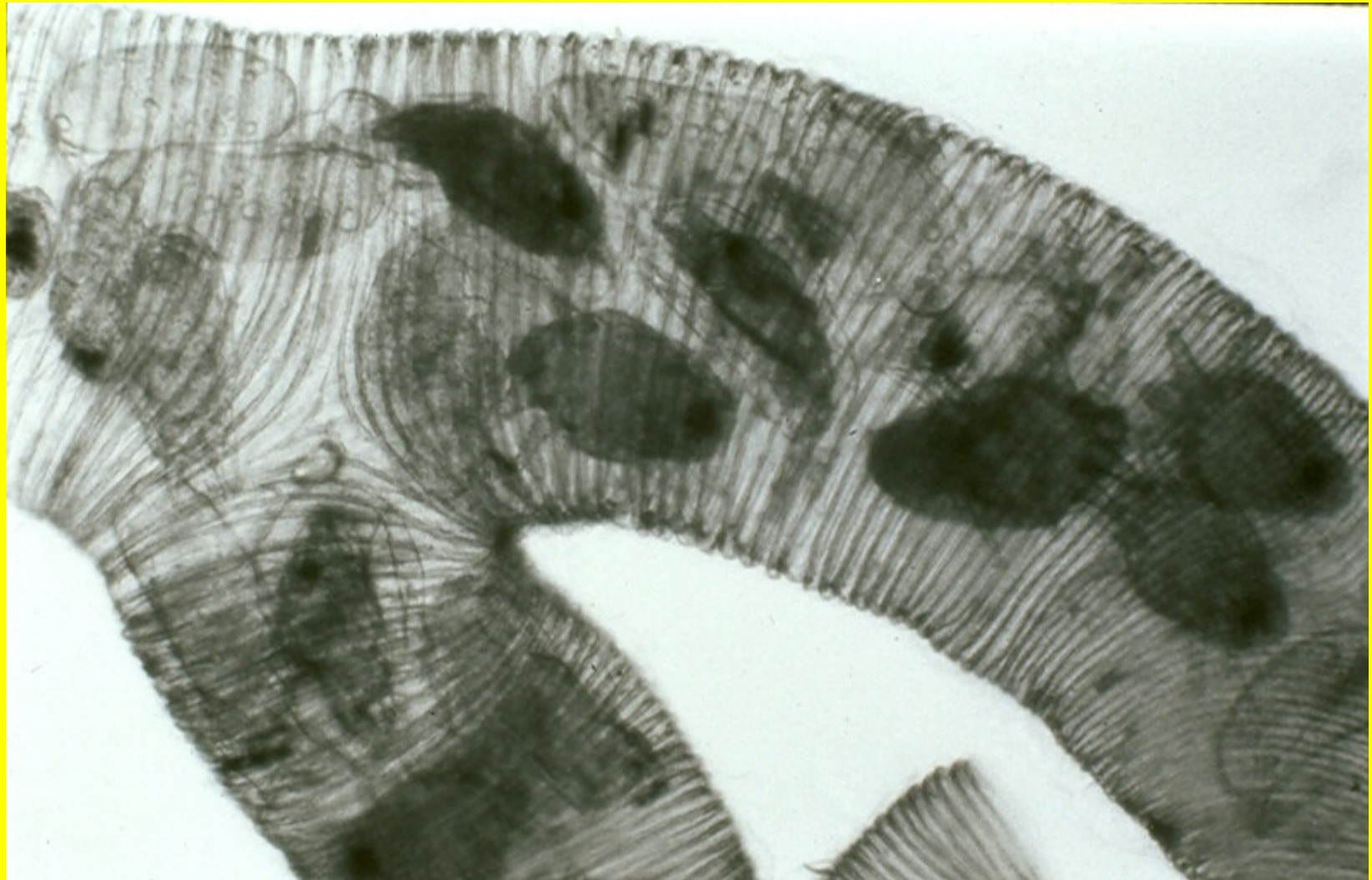


Trachea mite-Acarapis woodi



Mites in bee trachea





Varroa destructor mite

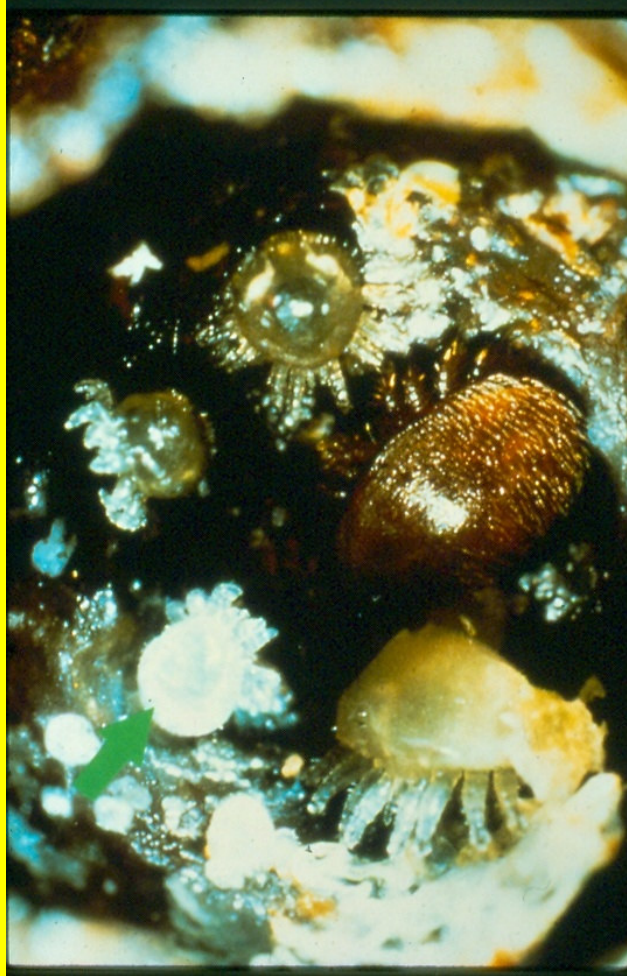
- Adult female



- Adult male



Male & Female in cell



Varroa on Honey Bee



Varroa on honey bee



Varroa on Drone



Deformed Bees



Small Hive Beetle - adult



Small Hive Beetle - Larvae

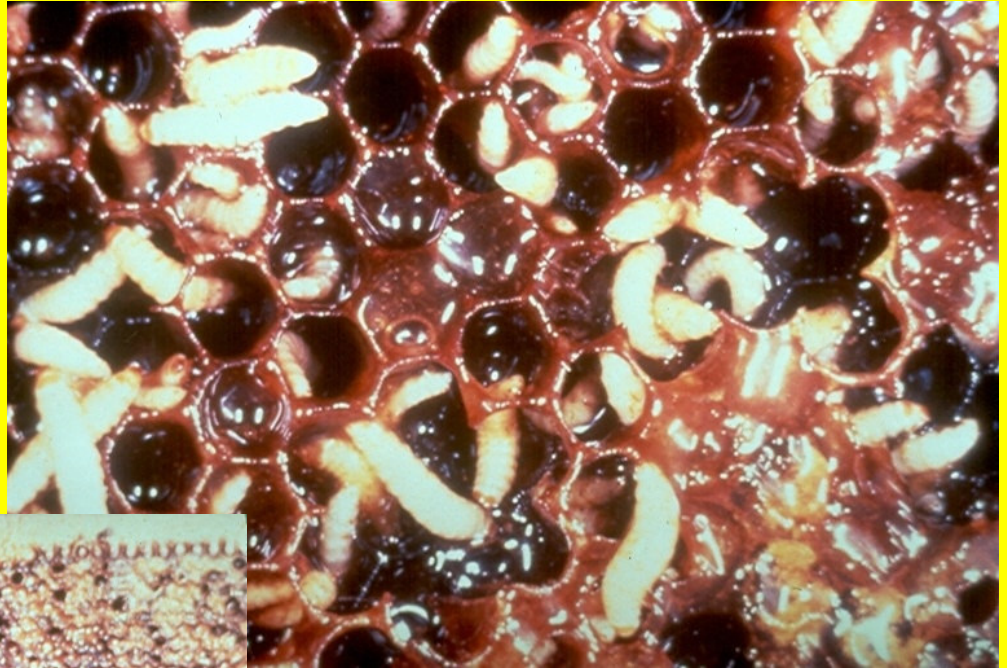


Small Hive
Beetle Larvae

Larvae



More Larva



Wax Moth Damage



Wax Moth Larvae



Wax Moth Adult



