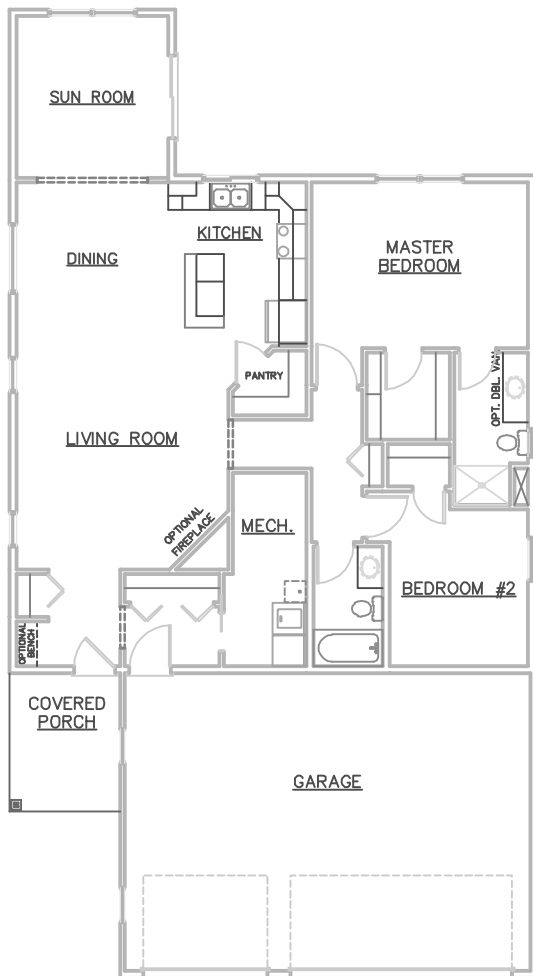


1876 MORNING GLORY DRIVE



SOME OPTIONS MAY BE SHOWN

SALE PRICE: \$279,900



- * 2 BEDROOMS, 2 BATHROOMS
- * 1,512 SQUARE FEET
- * OPEN FLOOR PLAN
- * WALK-IN-CLOSET
- * COVERED FRONT PORCH
- * SUN ROOM

ROOM SIZES

KITCHEN	10' X 12'
DINING	11' X 11'
LIVING ROOM	15'-4" X 17'
MASTER BEDROOM	15'-8" X 12'
BEDROOM #2	10' X 11'-4"
SUN ROOM	11' X 11'-8"



3475 Vermillion Street, Suite 101 ~ Hastings, MN 55033 ~ 651.437.3700 ~ www.gregjhomes.com

Plans and specifications are subject to change without notice. Copyright Greg J Homes of Hastings Inc. 2020