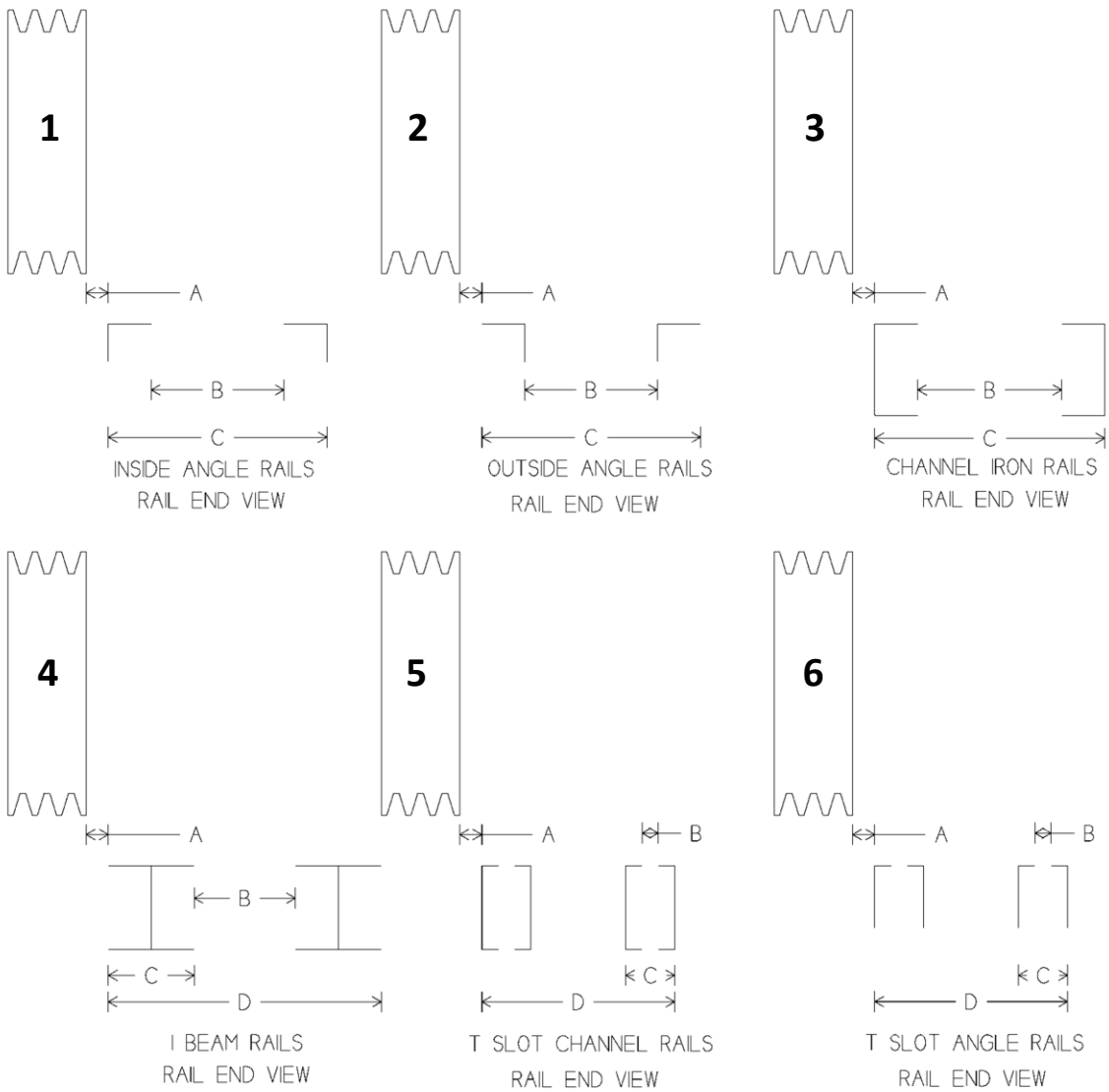
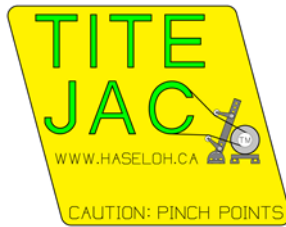


Tite - Jac Measurements required for custom tensioners.

Choose the mounting rails that best suit your pump jack. Please provide Make and Model of your pump jack, and fill in answers on second page.





Choose the number on the above diagram which best suits the rail design on the pump jack. If the pump jack's driven pulley overhangs the left hand rail, make that dimension a negative number.

Make and Model _____

Number of upper diagram _____

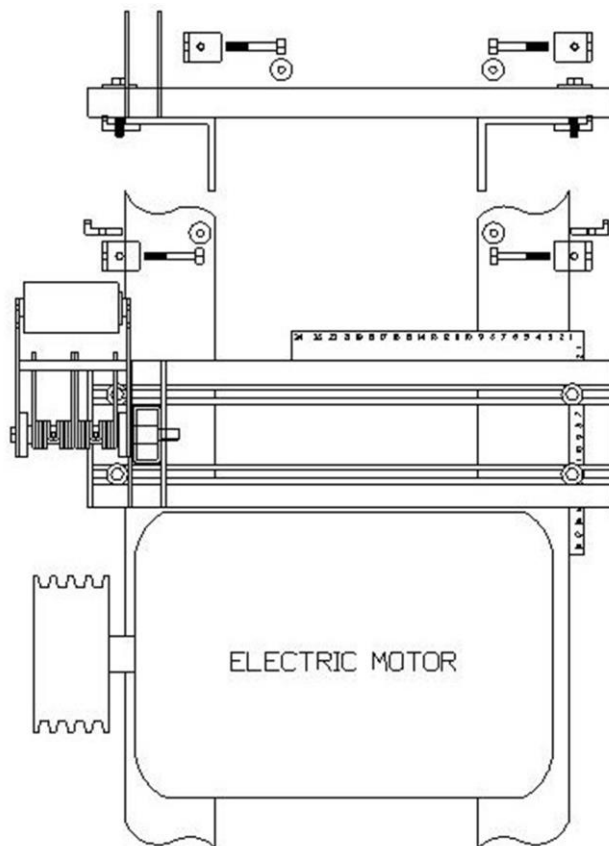
A Dimension _____

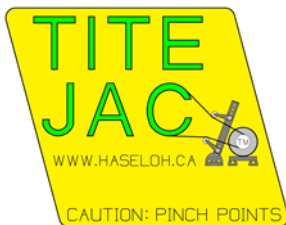
B Dimension _____

C Dimension _____

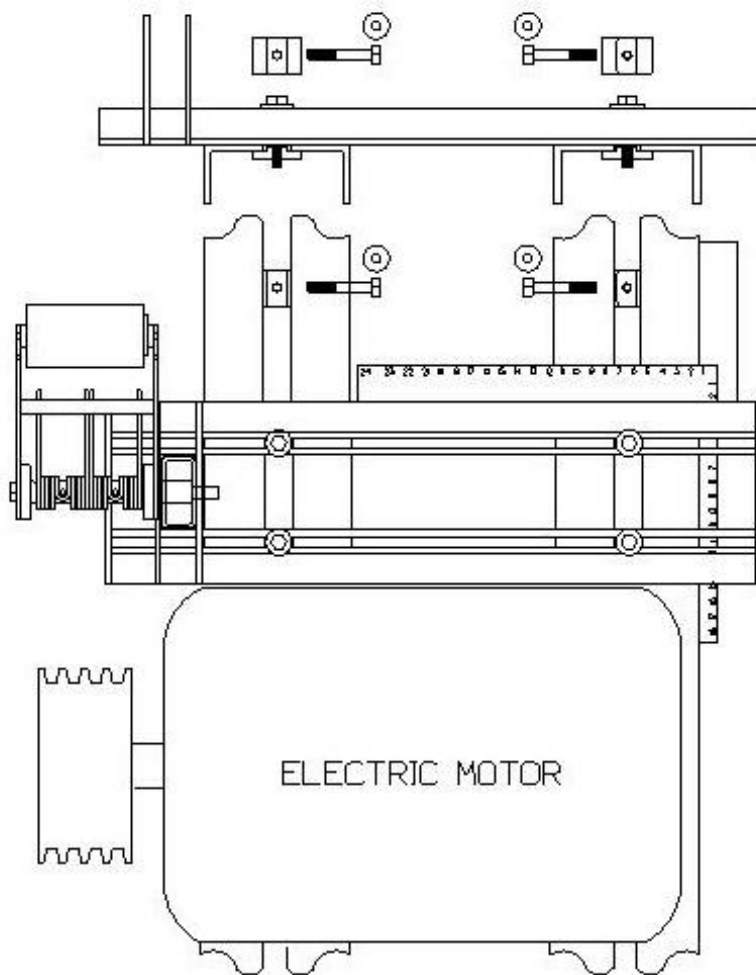
D Dimension _____

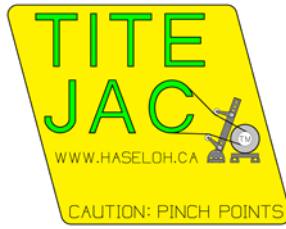
Rail diagrams 1 through 4 will use clamp brackets like shown below





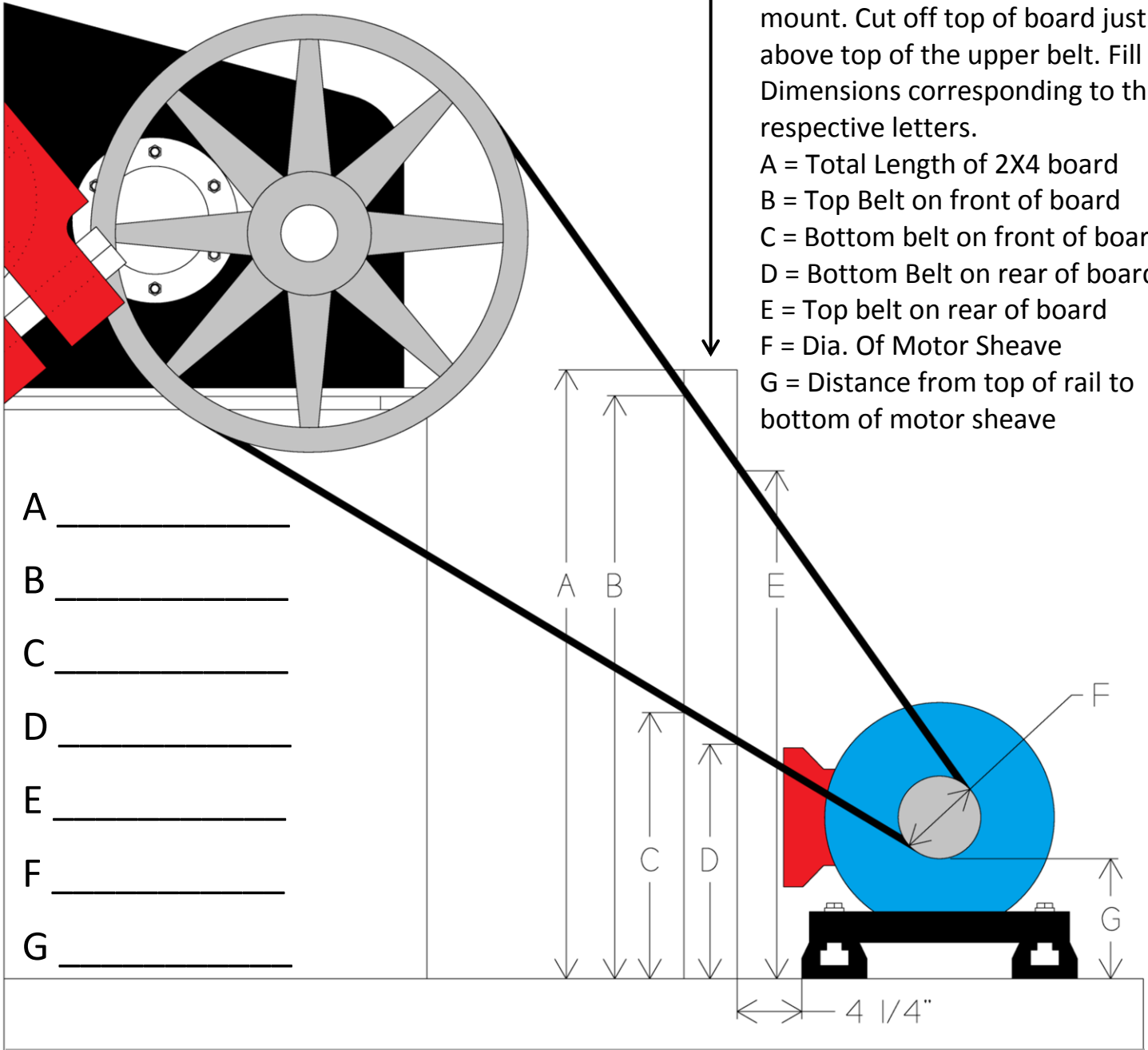
Rail diagrams 4 and 5 will use "T" nuts like shown below

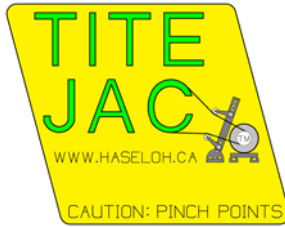




Place 2X4 board on top of rail with edge 4 1/4" away from front of motor mount. Cut off top of board just above top of the upper belt. Fill in Dimensions corresponding to their respective letters.

- A = Total Length of 2X4 board
- B = Top Belt on front of board
- C = Bottom belt on front of board
- D = Bottom Belt on rear of board
- E = Top belt on rear of board
- F = Dia. Of Motor Sheave
- G = Distance from top of rail to bottom of motor sheave





Tite – Jac can be configured to fit left and right hand drive pump jacks. Tite – Jac has three angles that the up-right tube can be tilted to accommodate many different pump jacks. The up-right tube shown below is the 36" length.

Standard lengths in stock are as follows.

30 Inch fit Churchill and Iron Horse Pump Jacks

36 Inch fit 456C HG Pump Jacks

40 Inch fits 320 Ampscot Pump Jacks

48 Inch

60 Inch Fits 320 Ampscot Pump Jacks with C66 Arrow engine

Custom lengths available with the above dimensions provided

