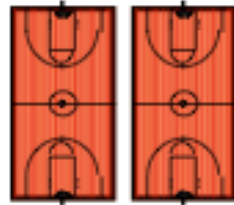


- A - REGISTRATION & INFORMATION
 B - SALES - SOUVENIRS & FOOD
 C - BANNER MAKING & STANDS
- D - **CATCH US IF YOU CAN** (GYM - RED)
 E - **ODD A BOT** (YELLOW)
 F - **IT'S TIME, OMER** (BLUE)
 G - **READY, SET, BALSA, BUILD!** (WEIGH-IN)
 H - **READY, SET, BALSA, BUILD!** (ORANGE)
 I - **TO BE CONTINUED: A SUPERHERO CLIFFHANGER** (PURPLE)
 J - **MOVIN' OUT!** (GREEN)
 K - **SPONTANEOUS** (MULTI-COLORED)
- L - PROP DROP OFF/PICK-UP
 M - HOSPITALITY (Coaches Only)
 N - JUDGES DINING ROOMS
 O - OMER'S FEST GAMES
 P - PRIMARY PARTY AT 2:00 pm
- ☆ - RESTROOMS
 ♥ - Okay for Canopies

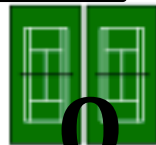


Teams and spectators have separate entrances. Look for signs.

T.E. WEIGHTMAN MIDDLE SCHOOL

Good area for a team "base."

K - REPORT TO SPONTANEOUS BUILDING 15 MINUTES BEFORE SCHEDULED TIME.



Good area for a team "base."

Board Parking Only

MAIN PARKING

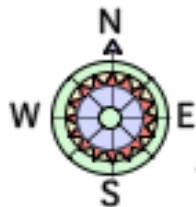


Good area for a team "base."

PLEASE, STAY OFF THE GRASS.



Good area for a team "base."



WELLS ROAD

JUDGE AND HANDICAPPED PARKING ONLY. PROP DROP OFF AND PICK UP ALLOWED, BUT DRIVER MUST STAY WITH VEHICLE.

