

INDEX:

BOWS
PAGE

4

ARROWS
PAGE

10

**NOCKS &
POINTS**
PAGE

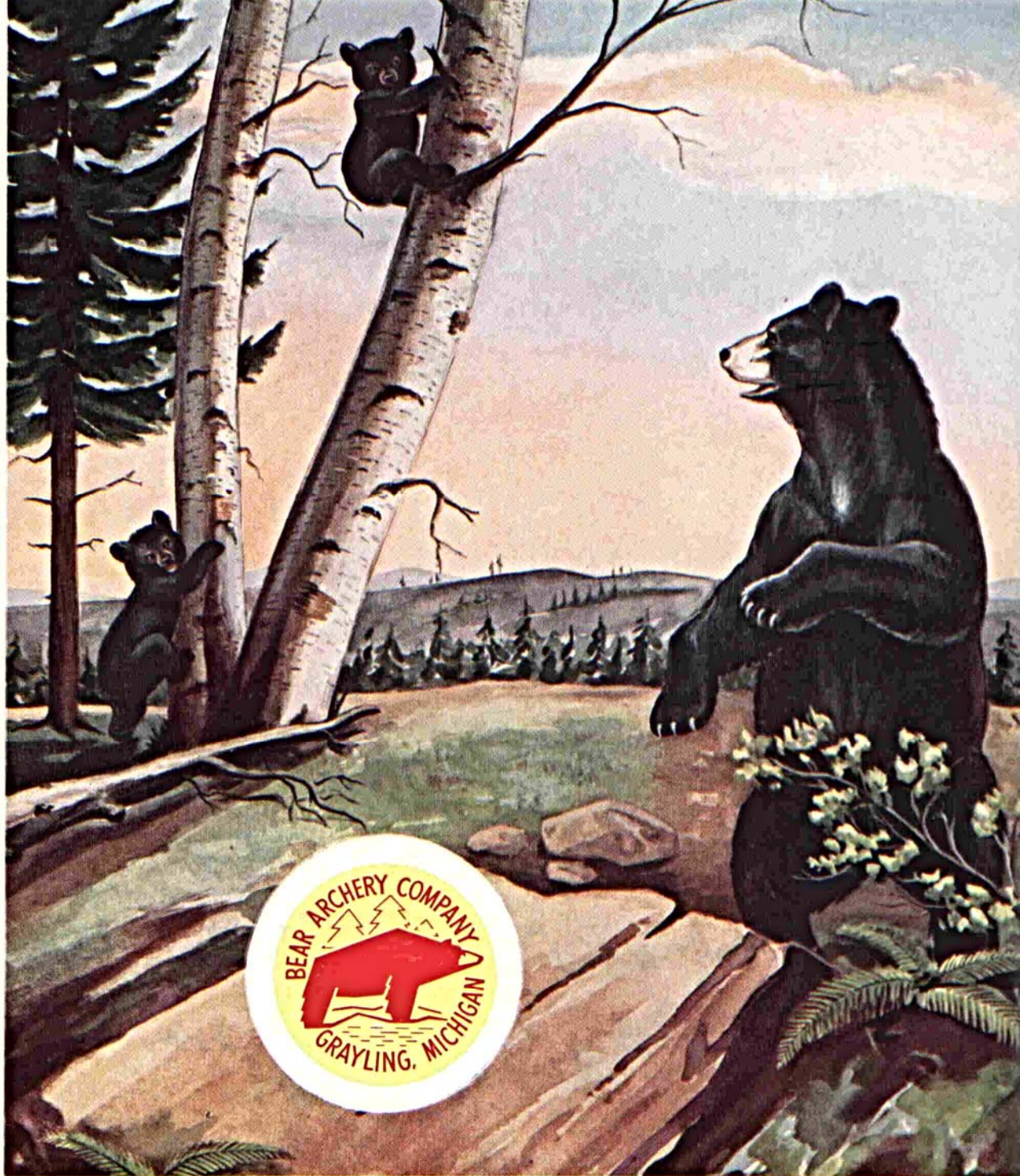
12

LEATHER
PAGE

13

ACCESSORIES
PAGE

16

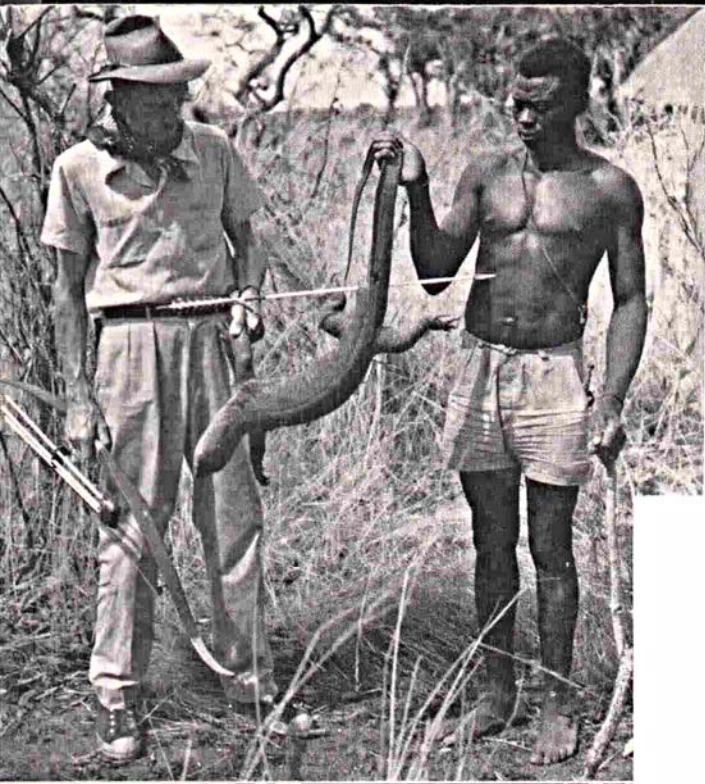


1956 CATALOG

Bear

**ARCHERY
EQUIPMENT**

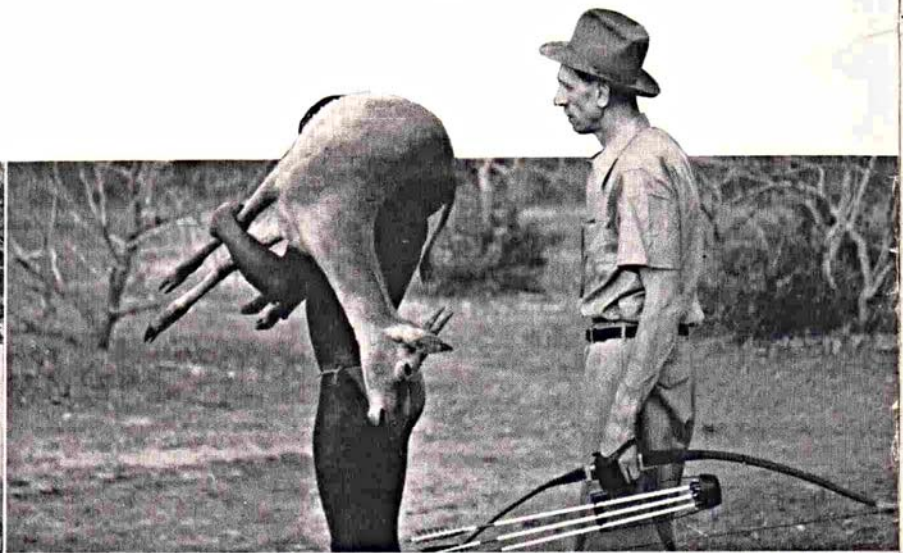
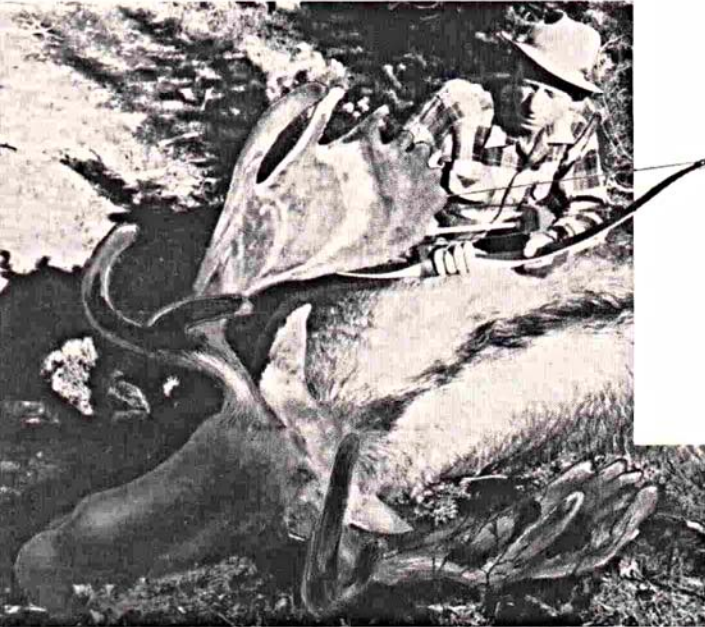
FOR THOSE WHO WANT THE FINEST



**these trophies tell
today's Bear Story . . .**

In recent months, these prizes and other enviable trophies fell before the accurate and hard-hitting hunting bows of Fred Bear and his friends. . . While the ever-popular deer is still number one in the bowhunter's bag, many are seeking new game and high adventure with bow and arrow. . . The glass-powered, feather-light Bear Bow with its unequalled shooting ease has broadened the range of modern hunting. Bear Bows are carried proudly by thousands of seasoned bowhunters who recognize the *finest*—and have it in this modern sporting weapon.

2



Bear GLASS-POWERED BOWS ARE BEST

because superiority is built-in

From the experienced archer's or bowhunter's point of view, his requirements are simple but important. He wants a good bow that's fast and smooth, with even build-up all the way back to full draw and with velvet-like recoil. Consistent accuracy, too, is a requisite, as is sustained power or weight regardless of hot or cold temperatures in wet or dry weather . . . And finally, he desires a bow of unusual beauty, grace of line and detailed craftsmanship, one that will be admired by his companions and be a source of pleasure for many years to come.

Combining these many qualities in one bow is more complex than it might appear to be. Yet all of them are built into each Bear glass-powered Bow. But no bow could attain such near-perfection by accident. Such a bow doesn't "just happen". And here is where modern science plays its part.

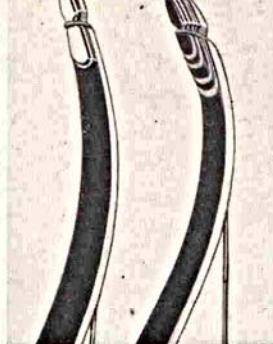
technology plays an important part

In a Bear Bow, the Fiberglas does the real work — the hard maple core serving mainly as a neutral area, a "core" or spacer-anchor, between the Fiberglas face-and-back elements. In the intricate process of making these Fiberglas strips lies the secret of Bear power, smoothness, durability and long life.

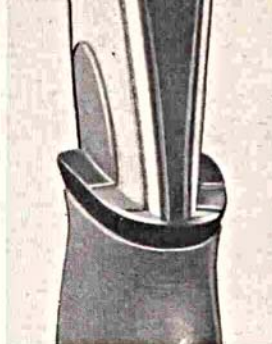
Glass facing and backing on all Bear Bows is produced in the Bear factory. Starting with multiple spools of Fiberglas yarn . . . the taut fibers are combined with plastic resins, processed and cured so that the finished glass strip is composed of thousands upon thousands of closely packed strands of Fiberglas, under equal tension and lying perfectly parallel to each other. During this operation, unique controls insure a "glass-power" element in which each and every strand is uniformly stressed, with every fiber doing its work when the bow is shot.

This exclusive construction is fully protected by Bear patents nos. 2,613,660 and 2,665,678. It provides a functioning element wherein ALL the individual Fiberglas strands in both facing and backing are under equal stresses when the bow nears full draw. ALL fibers "share the load", thereby eliminating the extremely high surface strains that occur when these elements are fabricated by any other method. Result: longer bow life.

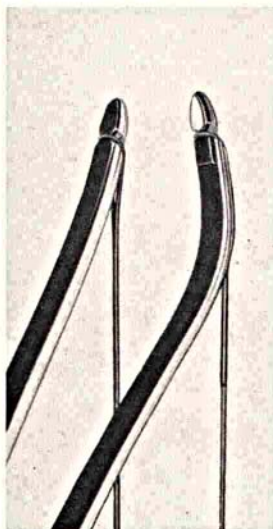
When welded to the tapered hard maple core by modern high-frequency bonding, the result is the fastest, smoothest and lightest bow possible — a bow of enduring beauty and performance unequalled today — a bow that's a thrill to shoot and a joy to own. It is Bear's answer for the discriminating customer who wants the finest.



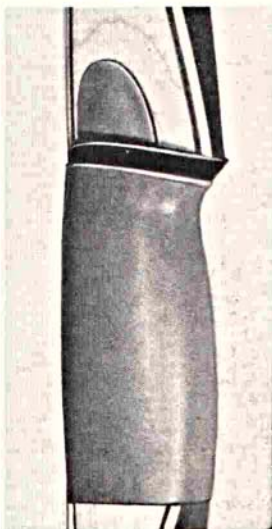
As seen on these Kodiak and Kodiak Special Bow tips, touches of hand-crafted artistry give your Bear Bow a distinctiveness not found on other bows of comparable price.



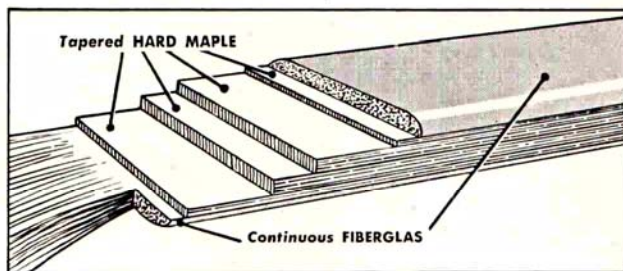
On the Kodiak, Grizzly, and Polar Bows, these dual arrow rests of near-center-shot design are standard, for right or left handed shooting. A practical and popular feature.



Cub, Polar and Grizzly Bow tips, too, are finished with typical Bear care. New semi-recurved shape on Polar and Cub adds a note of smartness to traditionally fine performance.



Where graceful form is truly functional. This beautiful Bear saddle-type leather handle just naturally feels right — adds beauty to your bow and pleasure to your shooting.



power and lightness are built-in, too!

Bear-made Fiberglas face and back strips, with tapered plies of hard maple high-frequency bonded between, comprise the unique "sandwich" construction of all Bear Bows. Because of the tremendous strength of this uniformly stressed Fiberglas, relatively thin layers are more than adequate to provide sustained power. This makes possible the weight-saving feature that makes a Bear glass-powered Bow so pleasingly feather-light in the hand.

Bear Kodiak

**tops for hunting . . .
ultimate in performance**

The KODIAK delivers arrow after arrow with accuracy, speed and smoothness heretofore unknown. With its remarkable cast and almost unbelievable shooting ease, KODIAK is "Bear at its best"—a custom quality feather-light bow you'll be proud to own.

Its exceptional performance is made possible by use of the working recurve principle combined with balanced handle design. Only by shooting KODIAK can its extra features be appreciated.



\$49.50

This bow has a form-fitting, saddle-type leather handle of near-center-shot design with double arrow rest.

KODIAK is made in two lengths:

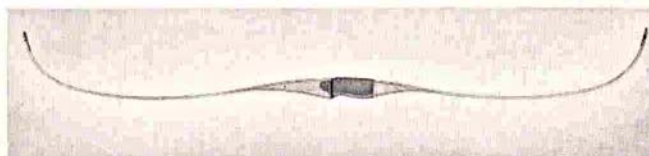
60" length, 28" draw limit, 35 to 75 lbs. for general hunting use and for those who prefer the convenience of a short bow.

64" length, 30" draw limit, 35 to 75 lbs. for those who like the smoother action of a longer bow.

KODIAK is also available on special order at no extra cost, in 56" length, 26" draw limit; 25 to 60 lbs. at 26". This bow is designed primarily for draw lengths between 24" and 26" where the ultimate in cast is desired; therefore its proportions are slightly smaller overall.

Heavy bows: weights between 76 and 100 lbs. available only in 64" length on special order and at \$10.00 extra.

*Kodiak
shown unstrung*



Bear Grizzly

still the hard-hitting veteran of recurved bows

Here is the forerunner of modern high-performance bow design. Although the current trend is toward the Bear working recurve, GRIZZLY is still in good demand among those who prefer the conventional recurve and graceful symmetry of this famous bow.



\$39.50

GRIZZLY is the reliable companion of thousands who enjoy target, field, roving or hunting. Since the GRIZZLY first appeared, it has taken more game than any other bow made! For durability, lightness and glass-powered hard-hitting effectiveness, this bow is an outstanding value.

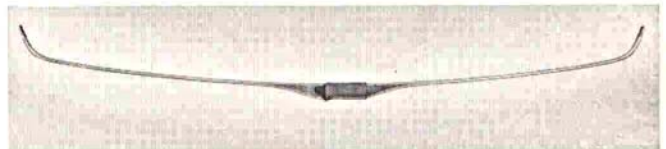
The GRIZZLY features include the popular Bear form-fitting saddle-type leather handle with its near-center-shot design. This handle has a double arrow rest, for right or left hand shooting.

Length, 62". Draw limit, 28". Weights, 35 to 75 lbs. Not available in other lengths or in heavier weights.

when ordering any Bear bow

Specify bow length, draw weight and draw length. To expedite delivery, orders may be filled in weights within two lbs. plus or minus, unless otherwise requested. All bows are weighed at 28" draw and are so marked unless otherwise stated.

*Grizzly
shown unstrung*



Bear Polar



the top-quality choice in semi-curved bows

A sleek, longer-limbed, semi-recurved beauty, the POLAR incorporates many of the Kodiak's graceful characteristics but without full-recurved ends. Exacting tournament shooters and discriminating bowhunters who prefer this type of bow find that POLAR meets their requirements with complete satisfaction.

Like all other Bear Bows, this model is faced and backed with Fiberglas over a weight-saving hard maple core. POLAR is a feather-light bow having many shooting qualities usually found only in fully recurved bows, yet with all the inherent accuracy of the straight bow design.

Its new style, form-fitting, saddle-type leather handle includes double arrow rest and near-center-shot features.

Length, 64". Draw limit, 30".
Weights, 35 to 75 lbs.

\$29.50

Bear Cub



the same glass-power, the same popular price

The popular CUB features high value and styling. . . Now a semi-recurved bow, CUB also has a form-fitting, saddle-type leather handle. Arrow rest can easily be changed from right to left hand.

The glass-power feature alone places it far above other makes near its moderate price, especially when shooting ease, cast, lightness and durability are considered.

Ruggedly constructed to withstand extreme temperature and moisture variations, the CUB is an excellent investment for schools, clubs or public ranges, where its *durability, stamina and popularity* with users soon becomes apparent. Although a favorite choice of beginners, many top tournament scores have been shot with the CUB.

Length, 62". Draw limit, 28".
Weights, 20 to 60 lbs. only.

\$22.50

when ordering any Bear bow

Specify bow length, draw weight and draw length. To expedite delivery, orders may be filled in weights within two lbs. plus or minus, unless otherwise requested.

All bows are weighed at 28" and are so marked, unless otherwise stated.

Every Bear Bow is Registered and Guaranteed

Polar shown unstrung

6

Cub shown unstrung



Bear Kodiak 'Special'

**for those who want the finest
in a tournament grade bow**

Nothing has been spared in our effort to produce this ultra-fine bow. Ideas and suggestions of many top shooters have been combined with Bear's experience, know-how and manufacturing facilities to give the expert what we believe to be the best.

The Special is unexcelled for consistently smooth and accurate shooting and uniformity of performance, hour after hour.



\$59.50

**when ordering
KODIAK Special**

Specify right or left hand, bow length, draw weight and draw length.

*Full sight window,
long arrow rest.*

KODIAK SPECIAL is a tournament grade bow combining the ultimate in shooting ease, beauty and durability. It features a large high handle section of center-shot design, incorporating a full sight window and long arrow rest, flowing into a most comfortable, contoured leather grip. This functional handle section is reinforced with a laminate of impregnated wood, forming an I-beam section for extra strength and beauty.

Made in 68" length for draws up to 30"; in 64" length for draws up to 28". If not specified otherwise, 64" length will be shipped. Weights, 35 to 75 lbs.

KODIAK SPECIAL is also available on special order and at no extra cost in 60" length, 26" draw limit; 25 to 60 lbs. at 26". This bow is designed primarily for draw lengths between 24" and 26" where the ultimate in cast is desired. Short sight window, not suitable for low anchor.

Heavy weights (between 76 lbs. and 100 lbs.) available *only* in 64" and 68" lengths on special order and at \$10.00 extra.

*Kodiak Special
shown unstrung*

