

P2

DRAWING NUMBER
452
PLAN HOLD CORPORATION • IRVINE, CALIFORNIA
RECORD BY NUMBER 0758R
SECTION ONE OF THREE ON THIS LINE

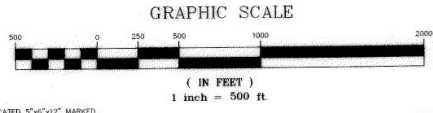
DRAWING NUMBER
452
PLAN HOLD CORPORATION • IRVINE, CALIFORNIA
RECORD BY NUMBER 0758R
SECTION ONE OF THREE ON THIS LINE

DRAWING NUMBER
452
PLAN HOLD CORPORATION • IRVINE, CALIFORNIA
RECORD BY NUMBER 0758R
SECTION ONE OF THREE ON THIS LINE

P2

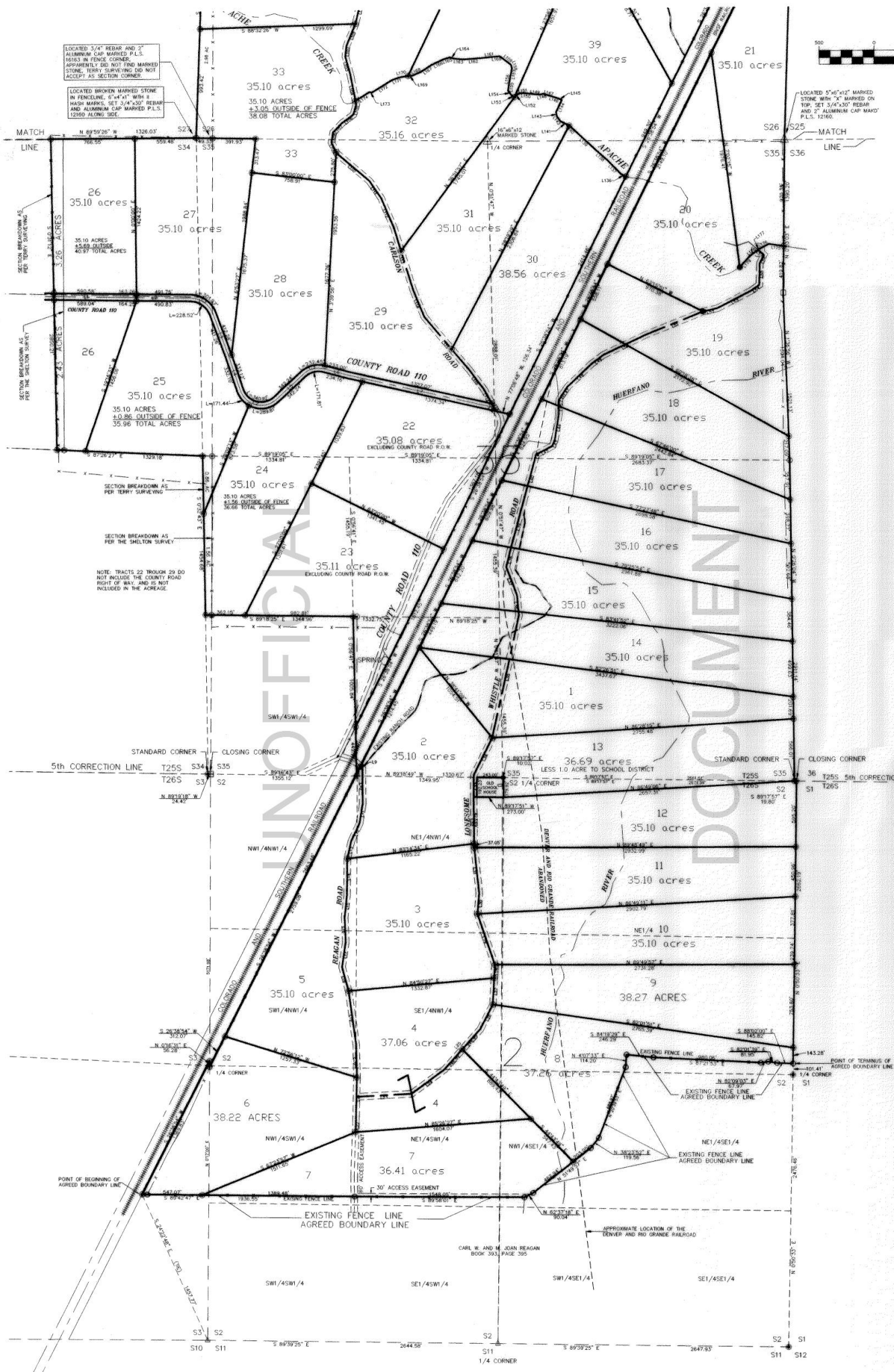
GHOST RIVER RANCH, FILING 1

LOCATED IN SECTIONS 23, 24, 26, 34 AND 35 OF TOWNSHIP
25 SOUTH, RANGE 66 WEST OF THE 6TH P.M.,
AND SECTIONS 2 AND 3, TOWNSHIP 26 SOUTH,
RANGE 66 WEST OF THE 6TH P.M., COUNTY OF HUERFANO,
STATE OF COLORADO.



200300357809
Filed for Record in
HUERFANO COUNTY, COLO
JUDY BENLINE
02-24-2003 at 09:36 am
MAP 31.00
MFP .00
DOC FEE .00

MAP 452
PRT 10
Fldr 2



LOCATED 3/4" REBAR AND 2" ALUMINUM CAP MARKED P.L.S. IN FENCE CORNER. APPARENTLY DID NOT FIND MARKED STONE. TERRY SURVEYING DID NOT ACCEPT AS SECTION CORNER.

LOCATED BROKEN MARKED STONE IN FENCELINE. 6" x 4" x 1" WITH PAINT MARKS. SET 3/4" x 30" REBAR AND ALUMINUM CAP MARKED P.L.S. 12160 ALONG SIDE.

LOCATED 5" x 4" x 1" MARKED STONE WITH "X" MARKED ON TOP. SET 3/4" x 30" REBAR AND 2" ALUMINUM CAP MARKED P.L.S. 12160.

NOTE: TRACTS 22 THROUGH 29 DO NOT INCLUDE THE COUNTY ROAD RIGHT OF WAY, AND IS NOT INCLUDED IN THE ACRES.

- LEGEND**
- △ LOCATED MARKED STONE, SET 3/4" x 30" REBAR AND ALUMINUM CAP MARKED P.L.S. 12160.
 - SET 1/2" x 24" REBAR AND PLASTIC CAP MARKED P.L.S. 12160.
 - SET 3/4" x 30" REBAR AND ALUMINUM CAP MARKED P.L.S. 12160 (SECTION CORNERS).
 - SET 1/2" x 24" REBAR AND ALUMINUM CAP MARKED P.L.S. 12160 (LOT CORNERS).
 - ⊕ LOCATED 3/4" ROD AND 3/25 ALUMINUM CAP MARKED P.L.S. 10093.
 - ⊞ LOCATED CONCRETE MONUMENT WITH 2.5" ALUMINUM CAP MARKED L.S. 4738.
 - ⊗ LOCATED REBAR AND ALUMINUM CAP MARKED L.S. 16163.
 - ⊠ LOCATED REBAR AND ALUMINUM CAP MARKED L.S. 26296.
 - EXISTING FENCE LINE AND AGREED BOUNDARY LINE.

STONE CLIFF INVESTMENTS, LLC
RECEPTION NO. 356304

TERRY SURVEYING, INC.
P.O. BOX 851, TRINIDAD, CO. 81082 (719) 846-6921

GHOST RIVER RANCH, FILING 1
LOCATED IN SECTIONS 23, 24, 26, 34 AND 35, TOWNSHIP 25 SOUTH, RANGE 66 WEST OF THE 6TH P.M.
AND SECTIONS 2, AND 3, TOWNSHIP 26 SOUTH, RANGE 66 WEST OF THE 6TH P.M.

DRAWN BY: GT-II	DATE: MARCH 10, 2003
CHECKED BY: G. TERRY	DRAWING NO.: 913-03A
JOB NO.: 3175-03	SHEET 2 OF 3

P.3

DRAWING NUMBER
452

DRAWING NUMBER
452

DRAWING NUMBER
452

P.3

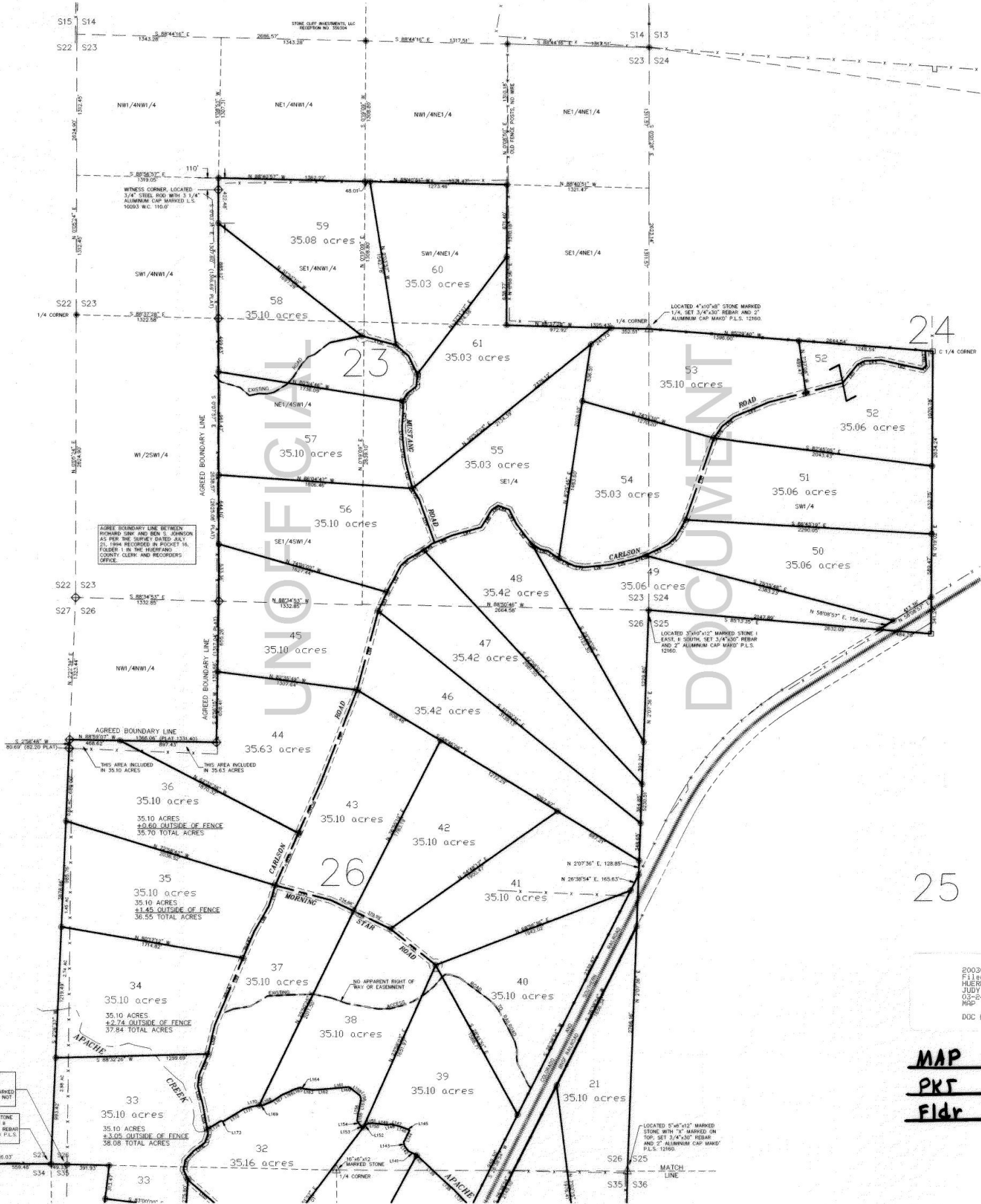
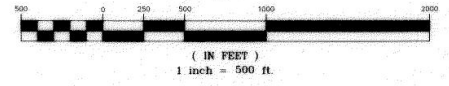
DRAWING NUMBER
452

GHOST RIVER RANCH, FILING 1

LOCATED IN SECTIONS 23, 24, 26, 34 AND 35 OF TOWNSHIP
25 SOUTH, RANGE 66 WEST OF THE 6TH P.M.,
AND SECTIONS 2 AND 3, TOWNSHIP 26 SOUTH,
RANGE 66 WEST OF THE 6TH P.M., COUNTY OF HUERFANO,
STATE OF COLORADO.



GRAPHIC SCALE



20030037809
Filed for Record in
HUERFANO COUNTY, COLO
JUDY BENINE
03-24-2003 at 08:36 am
MAP 31.00
DUC FEE 1.00

MAP **452**
PKT **10**
Fldr **1**

- LEGEND**
- △ LOCATED MARKED STONE, SET 3/4" x 30" REBAR AND ALUMINUM CAP MARKED P.L.S. 12160.
 - SET 1/2" x 24" REBAR AND PLASTIC CAP MARKED P.L.S. 12160.
 - SET 3/4" x 30" REBAR AND ALUMINUM CAP MARKED P.L.S. 12160 (SECTION CORNERS).
 - SET 1/2" x 24" REBAR AND ALUMINUM CAP MARKED P.L.S. 12160 (LOT CORNERS).
 - ⊕ LOCATED 3/4" ROD AND 3.25 ALUMINUM CAP MARKED P.L.S. 10093.
 - ⊞ LOCATED CONCRETE MONUMENT WITH 2.5" ALUMINUM CAP MARKED L.S. 4738.
 - ⊗ LOCATED REBAR AND ALUMINUM CAP MARKED L.S. 16163.
 - ⊞ LOCATED REBAR AND ALUMINUM CAP MARKED L.S. 26296.
 - EXISTING FENCE LINE AND AGREED BOUNDARY LINE.

STONE CLIFF INVESTMENTS, LLC
RECEPTION NO. 356304

TERRY SURVEYING, INC.
P.O. BOX 851, TRINIDAD, CO. 81082 (719) 846-6921

GHOST RIVER RANCH, FILING 1
LOCATED IN SECTIONS 23, 24, 26, 34 AND 35, TOWNSHIP 25 SOUTH, RANGE 66 WEST OF THE 6TH P.M.
AND SECTIONS 2, AND 3, TOWNSHIP 26 SOUTH, RANGE 66 WEST OF THE 6TH P.M.

DRAWN BY: <i>GT-II</i>	DATE: MARCH 10, 2003
CHECKED BY: <i>G. TERRY</i>	DRAWING NO.: 913-03A
JOB NO.: 3175-03	SHEET 3 OF 3