

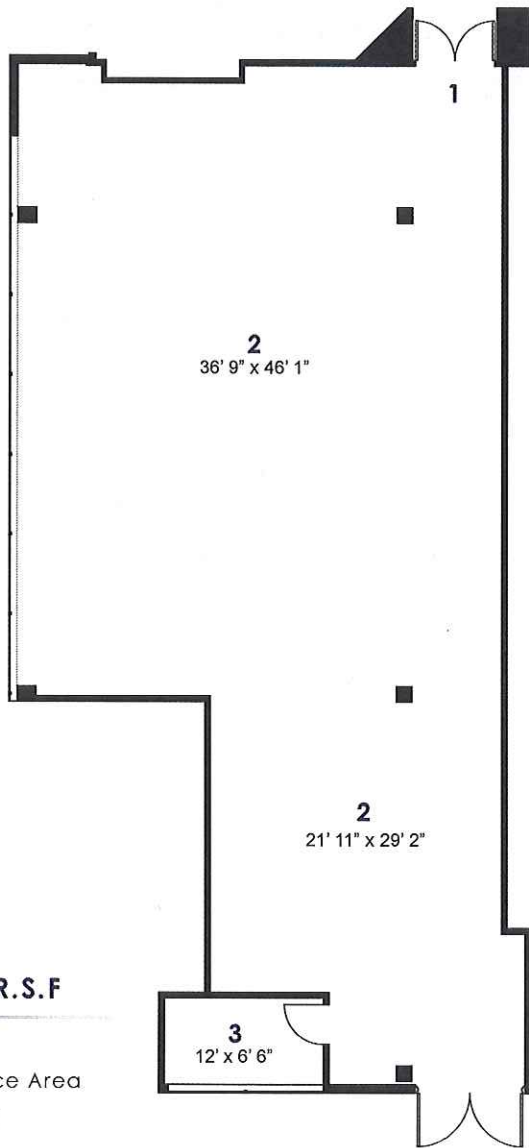
THE ATRIUM

6811 S. 204th Street, Kent, WA 98032

Suite 190

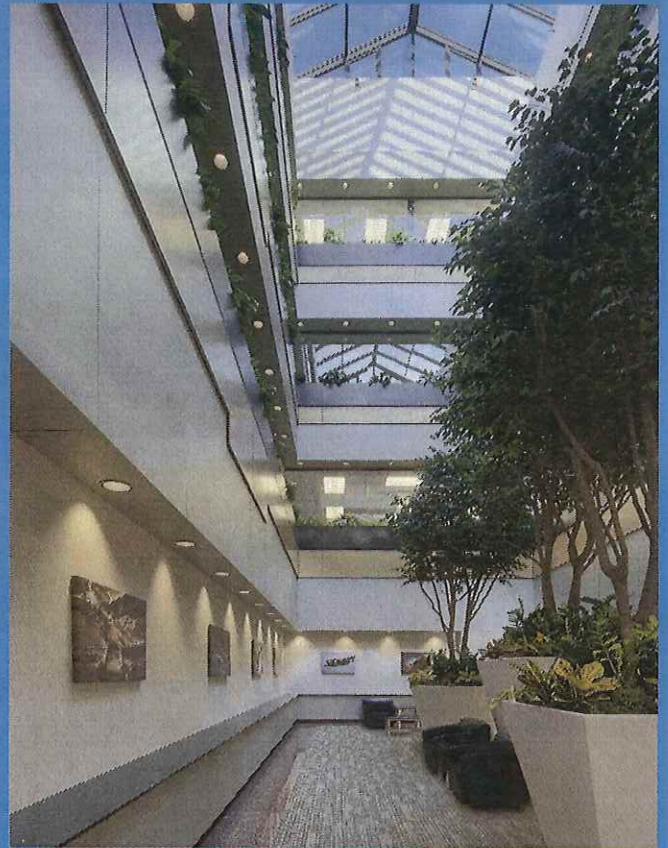
(253) 395-9226

CREATING THE **BEST PLACE**
FOR THE **BEST PEOPLE** TO WORK.



2,755 R.S.F

- 1 Entry
- 2 Open Office Area
- 3 Storage/I.T



OPEN & COLLABORATIVE WORK ENVIRONMENTS

LARGE CONTIGUOUS SPACES
FOR GROWING COMPANIES

PRE-BUILT INSTA-SUITES
FOR SMALLER COMPANIES

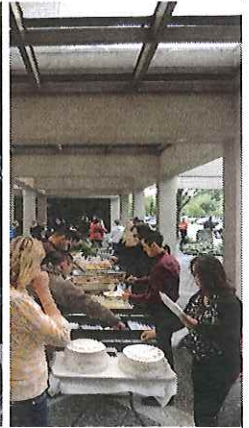
LINK-ABLE SUITES
FOR EASY EXPANSION

Fountainhead
Northwest
OFFICE DEVELOPMENT

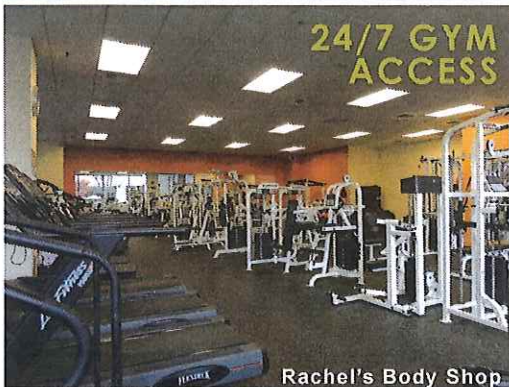
The Atrium at CenterPoint Corporate Park.

www.FountainheadNorthwest.com

CULTURE & AMENITIES

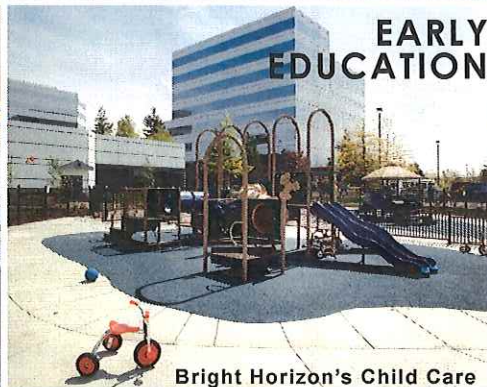


- 1/4 & 1/2 Mile Outdoor Fitness Paths with Stretching Station
- On-Site Management, Engineering & Design Team
- Corporate Barbeque Areas
- Nature trail along Mill Creek
- Conference Center with rooms up to 200 people



24/7 GYM ACCESS

Rachel's Body Shop



EARLY EDUCATION

Bright Horizon's Child Care



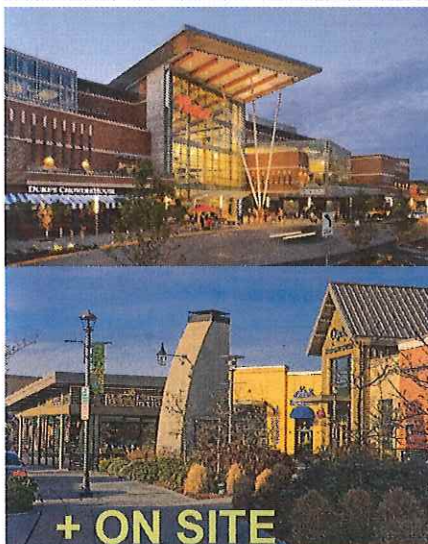
FULL SERVICE

Alki Bakery Cafe

Full service 24/7 fitness center & personal training (www.rachelsbodyshop.com)

Providing infant to pre-kindergarten programs (www.brighthorizons.com)

Providing breakfast, lunch & catering services. (www.alkibakery.com)



CLOSE TO EVERYTHING..

- Shopping
- Hotels
- Restaurants
- Entertainment
- Schools
- Housing

+ ON SITE

TRANSPORTATION ROUTES

Access to FOUR major highways!



FOR MORE INFORMATION
www.FountainheadNorthwest.com
 253-395-9226

Fountainhead Northwest
 OFFICE DEVELOPMENT