

15127130 CODES TIME 08 40A  
101 0006 23AL84  
RECORDED 010202 D  
CK 37.00

THIS IS NOT A  
OFF REC. 4318 PG 85  
AMENDMENT TO THE DECLARATION OF CONDOMINIUM  
OF  
RIVER OAKS CONDOMINIUM II  
CERTIFIED COPY

U. S. HOME CORPORATION, a Delaware corporation authorized to do business in the State of Florida, by these presents does hereby amend the Declaration of Condominium of RIVER OAKS CONDOMINIUM II, which is recorded in O.R. Book 3817, at Pages 512 thru 584, inclusive, of the Public Records of Hillsborough County, Florida, by the addition of a surveyor's certificate, attached hereto and made a part hereof, certifying that the improvements to Building(s) 25, located in Phase VI, are substantially complete.

This Amendment to be effective immediately upon same being properly recorded in the Public Records of Hillsborough County, Florida.

This Amendment to the Declaration of Condominium of RIVER OAKS CONDOMINIUM II is made this 19th day of April, 1984.

Witnesses:  
[Signature]  
[Signature]

U. S. HOME CORPORATION  
By: [Signature]  
Attest: [Signature]

INT TAX	BURTAX	DOC SIP	REC FEE	ACC NUM	TOT DUE	REC CLK
			27.00		32.00	[Signature]

(CORPORATE SEAL)



CONDO BOOK 6, PAGE 71.

PREPARED BY AND RETURN TO:  
R. Timothy Peters, Esquire  
R. Timothy Peters, P.A.  
Post Office Box 6316  
Clearwater, Florida 34518  
JAMES F. TAYLOR, JR.  
CLERK CIRCUIT COURT  
RECORDING DEPT.  
HILLSBOROUGH CO.  
TAMPA, FL 33602

THIS IS NOT

OFF REC. 4318 PG 86

STATE OF FLORIDA  
COUNTY OF PINELLAS

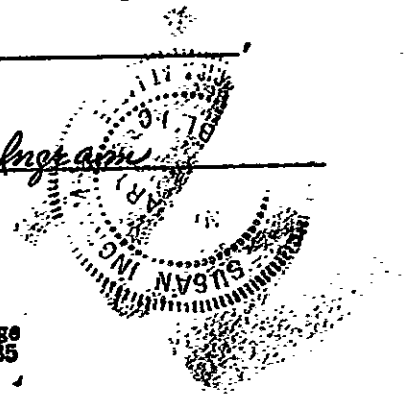
CERTIFIED COPY  
I HEREBY CERTIFY that on this day before me personally  
appeared L. John Loud and

Bruce S. Garretson, as Div. Vice President  
and Div Ass't. Sec., respectively, of U. S. HOME

CORPORATION, a Delaware corporation, to me known to be the  
persons described in and who executed the foregoing Amendment  
to the Declaration, and they severally acknowledged the  
execution thereof to be their free act and deed as such  
officers, for the uses and purposes therein mentioned; and  
that they affixed thereto the official seal of said corporation,  
and the said instrument is the act and deed of said corporation.

WITNESS my hand and official seal in the County and State  
last aforesaid this 19th day of April  
19 84.

Susan Ingram  
NOTARY PUBLIC



My Commission Expires:

Notary Public, State Of Florida At Large  
My Commission Expires Nov. 20, 1985  
Bonded By SAFECO Insurance Company of America

THIS IS NOT A CERTIFIED COPY OFF. REC. 4318 PG 87

**SURVEYOR'S CERTIFICATE**

I HEREBY CERTIFY that on this 7th day of April, 1984, the property legally described on Sheet 7 of Exhibit "B" to the Declaration of RIVER OAKS - CONDOMINIUM II, as recorded in O.R. Book 3817 at Pages 512 through 584, Inclusive, of the Public Records of Hillsborough County, Florida, under the heading RIVER OAKS - CONDOMINIUM II, was surveyed and staked and that the dimensions and angles are correct and that the finished floor elevations\* of the respective units in Phase VI (Building No. 25) are as follows:

**PHASE VI (BUILDING NO. 25)**

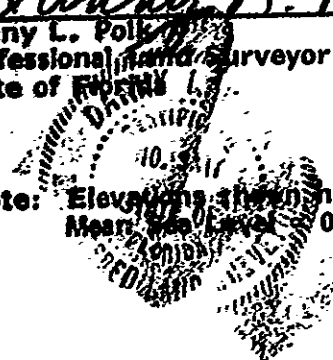
<u>UNIT NUMBERS</u>	<u>FINISHED ELEVATIONS</u>
(2501) 4853	30.81
(2502) 4849	30.81
(2503) 4845	30.81
(2504) 4841	30.81
(2505) 4837	30.81
(2521) 4855	39.76
(2522) 4851	39.76
(2523) 4847	39.76
(2524) 4843	39.76
(2525) 4839	39.76

I further certify that the construction of the improvements to Phase VI, (Building No. 25) are substantially complete so that the material, together with the provisions of the Declaration describing Phase VI (Building No. 25) of the condominium property is an accurate representation of the location and dimensions of the common elements of each unit in Phase VI (Building No. 25) can be determined from these materials.

*Danny L. Polk*  
**Danny L. Polk**  
Professional Land Surveyor No. 3317  
State of Florida

**EXHIBIT "B"**

\*Note: Elevations shown hereon refer to the N.C.V.D. of 1929 Mean Sea Level 0.00



AMENDED RIVER OAKS - CONDOMINIUM II

SECTION 28, TOWNSHIP 28 SOUTH RANGE 19 EAST, HILLSBOROUGH COUNTY, FLORIDA

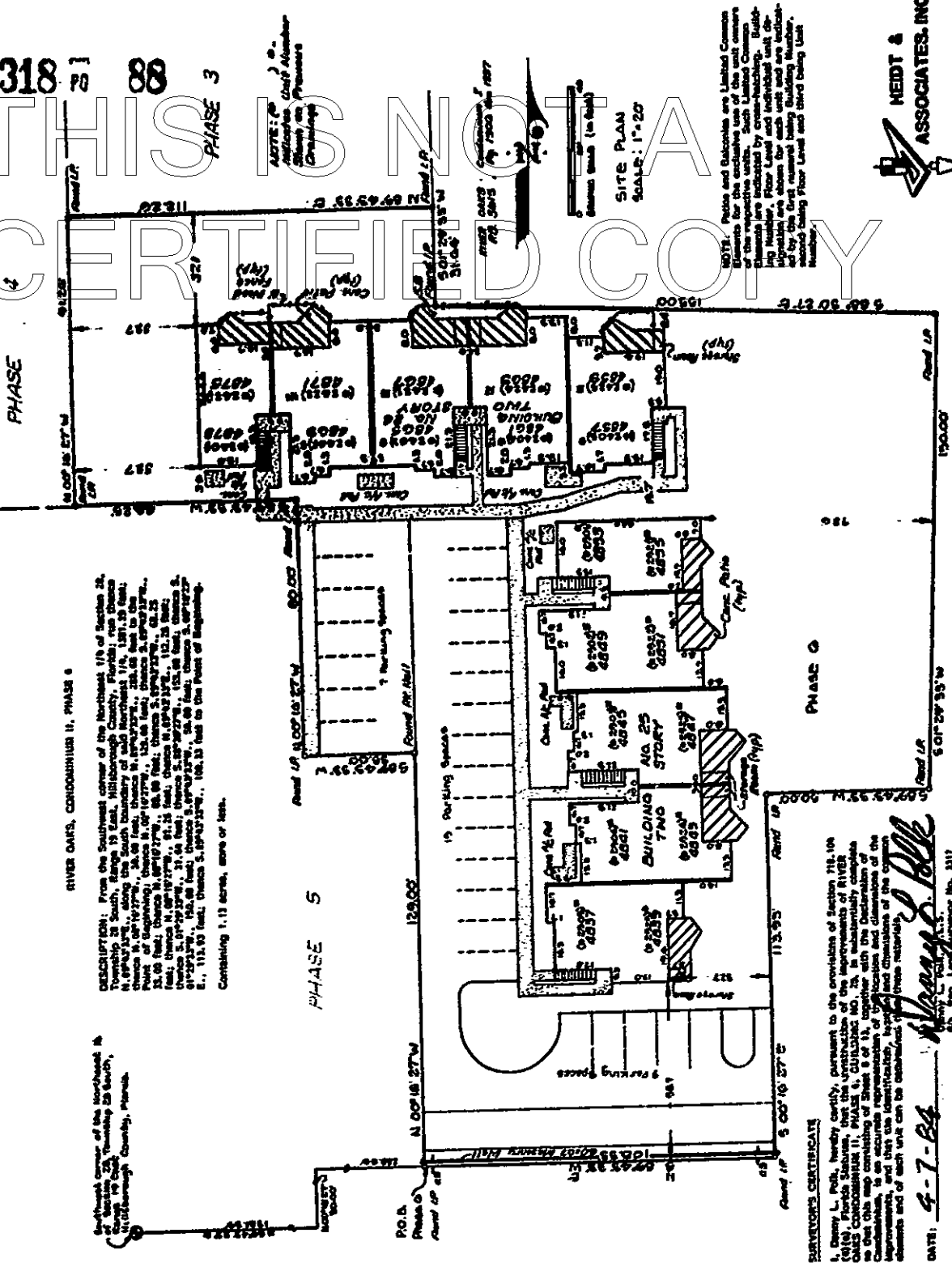
REF. C. 4318 [ 88 ]

THIS IS NOT A CERTIFIED COPY

Southwest corner of the Northwest 1/4 of Section 28, Township 28 South, Range 19 East, Hillsborough County, Florida.

DESCRIPTION: From the Southwest corner of the Northwest 1/4 of Section 28, Township 28 South, Range 19 East, Hillsborough County, Florida: run thence N 89°12'33"W, along the South boundary of said Northeast 1/4, 1261.35 feet to the Point of Beginning; thence S 70°12'29"W, 258.48 feet to the Point of Beginning; thence S 70°12'29"W, 126.48 feet to the Point of Beginning; thence N 89°12'33"W, 126.48 feet to the Point of Beginning; thence S 70°12'29"W, 258.48 feet to the Point of Beginning; thence S 70°12'29"W, 126.48 feet to the Point of Beginning; thence N 89°12'33"W, 126.48 feet to the Point of Beginning; thence S 70°12'29"W, 258.48 feet to the Point of Beginning; thence S 70°12'29"W, 126.48 feet to the Point of Beginning.

Containing 1.13 acres, more or less.



ADVIS: The Seller and Buyer are Limited Common Owners for the exclusive use of the unit owners of the respective units. Such Limited Common Elements are indicated by cross-hatching. Building Number, Floor Level and individual unit designations are shown for each building and unit. A legend explaining the symbols and unit designations is located on the following page and is hereby incorporated by reference into this plan.

SITE PLAN SCALE: 1"=20'

SURVEYOR'S CERTIFICATE

I, Emory L. Polk, hereby certify, pursuant to the provisions of Section 111.16 (1)(b), Florida Statutes, that this plat was prepared by me or under my direct supervision and that I am a duly licensed and qualified professional engineer under the laws of the State of Florida.

DATE: 4-7-84

Emory L. Polk  
Professional Engineer  
No. 5173



HEIDT & ASSOCIATES, INC.

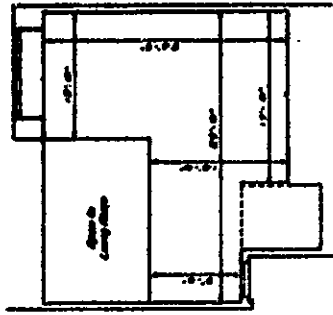
# AMENDED RIVER OAKS - CONDOMINIUM II

SECTION 2B, TOWNSHIP 28 SOUTH, RANGE 19 EAST, HILLSBOROUGH COUNTY, FLORIDA

REC: 4318 TO 89

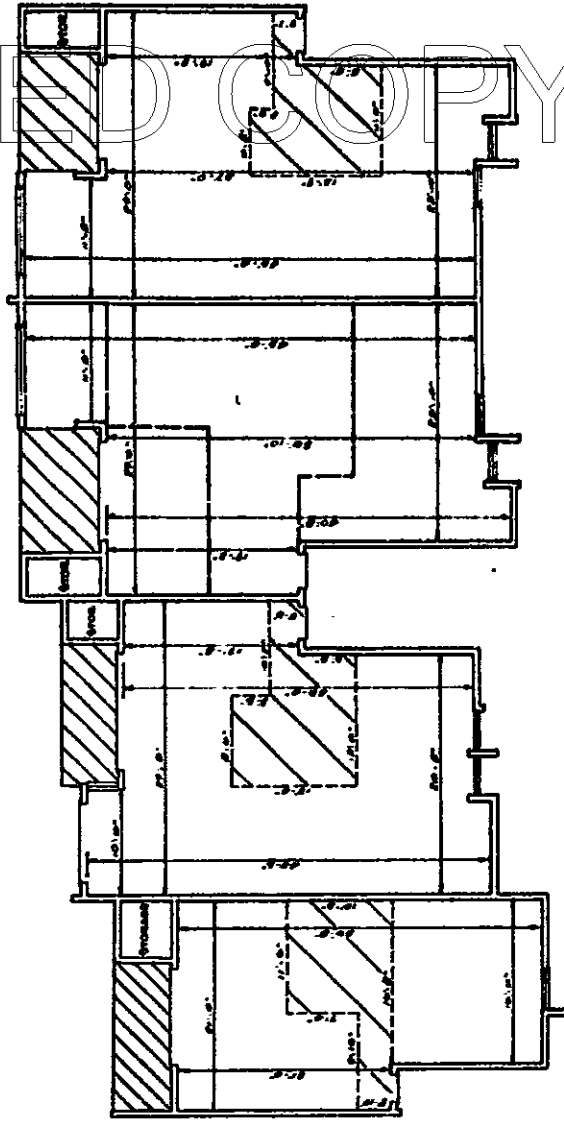
THIS IS NOT A CERTIFIED COPY

NOTE: All-out Minimum Living Chamber Elements for the exclusive use of the unit owners of the respective units. Such Living Chamber Elements are indicated by cross-hatching.



5<sup>th</sup> FLOOR OF UNIT 1001  
(See Notes attached to this plan)

Scale: 1/8" = 1'-0"



1<sup>st</sup> FLOOR - Type 1A  
2<sup>nd</sup> FLOOR - Type 2A  
Cross-hatching indicates LUL  
Area of 1A, 1B, 2A

1<sup>st</sup> FLOOR - Type 1B  
2<sup>nd</sup> FLOOR - Type 2B  
Cross-hatching indicates LUL  
Area of 1B, 2B

1<sup>st</sup> FLOOR - Type 3A  
2<sup>nd</sup> FLOOR - Type 3B  
3<sup>rd</sup> FLOOR - Type 3C  
Cross-hatching indicates LUL  
Area of 3A, 3B, 3C

1<sup>st</sup> FLOOR - Type 4A  
2<sup>nd</sup> FLOOR - Type 4B  
Cross-hatching indicates LUL  
Area of 4A, 4B



NEIT &  
ASSOCIATES, INC.

# AMENDED RIVER OAKS - CONDOMINIUM II

SECTION 28, TOWNSHIP 28 SOUTH RANGE 19 EAST, HILLSBOROUGH COUNTY, FLORIDA

THIS IS NOT A CERTIFIED COPY

REF. REC. 4318 PG 90



**NOTES:**

- 1) The boundaries of the units are the lines indicated on the drawings with, doors, and windows.
- 2) All dimensions shown refer to finished dimensions of each unit including all elements and materials to be installed which may include carpet, tile, etc.
- 3) Floor plans were compiled with plans and data supplied by The Design Associates, Inc., 2728 Nancy Road, Suite 100, Tampa, Florida, 33607.

**Building "16"**  
 Unit 1601 w/o loft  
 Unit 1602 w/ loft

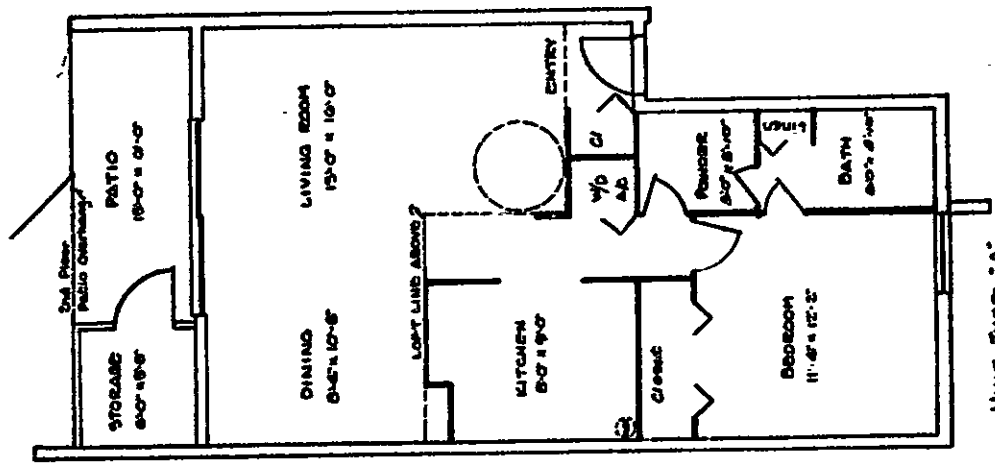
**Building "17"**  
 Unit 1701 w/o loft  
 Unit 1702 w/ loft

**Building "19"**  
 Unit 1901 w/o loft  
 Unit 1902 w/ loft

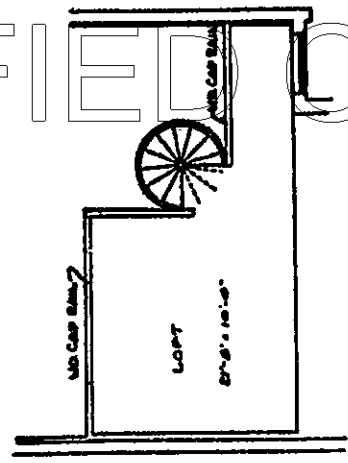
**Building "21"**  
 Unit 2101 w/o loft  
 Unit 2102 w/ loft

**Building "22"**  
 Unit 2201 w/o loft  
 Unit 2202 w/ loft

**Building "23"**  
 Unit 2301 w/o loft  
 Unit 2302 w/ loft



UNIT TYPE "A"  
 SCALE: 1/8" = 1'-0"



- Building "21"**  
 Unit 2101 w/o loft  
 Unit 2102 w/ loft
- Building "22"**  
 Unit 2201 w/o loft  
 Unit 2202 w/ loft
- Building "23"**  
 Unit 2301 w/o loft  
 Unit 2302 w/ loft
- Building "24"**  
 Unit 2401(2401) w/o loft  
 Unit 2402(2402) w/ loft

**LEGEND:**  
 CI Closet  
 W/B Wet Bar  
 A/C Air Conditioner  
 W/D Washer/Dryer

# AMENDED RIVER OAKS - CONDOMINIUM II

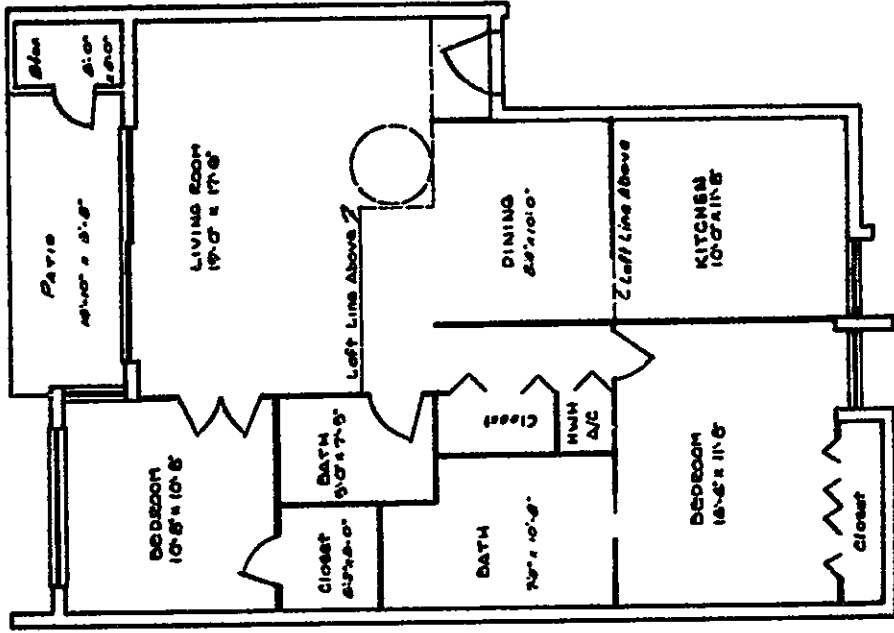
SECTION 28, TOWNSHIP 28 SOUTH, RANGE 19 EAST, HILLSBOROUGH COUNTY, FLORIDA

**THIS IS NOT A CERTIFIED COPY**

OFF REC. 4318 PG 91

**NOTES:**

1. The boundaries of the units are the least perturbed surface of the permanent walls, floors, and ceilings.
2. All dimensions shown refer to inside dimensions of each unit, except as shown and are subject to slight variances which may have occurred during construction.
3. Floor plans were compiled with plans and data supplied by The Design Associates, Inc., 2709 Lucky Point Blvd., Suite 100, Tampa, Florida, 33607.



UNIT TYPE 'B'  
Scale: 1/8" = 1'-0"

BUILDING "10"  
UNIT 1002  
UNIT 1003  
UNIT 1004  
UNIT 1005

BUILDING "21"  
UNIT 2101 w/o LOFT  
UNIT 2102 w/ LOFT

BUILDING "22"  
UNIT 2202 w/o LOFT  
UNIT 2202 w/ LOFT

BUILDING "77"  
UNIT 7701 w/o LOFT  
UNIT 7702 w/o LOFT  
UNIT 7703 w/o LOFT

BUILDING "78"  
UNIT 7801 w/o LOFT  
UNIT 7802 w/o LOFT

BUILDING "79"  
UNIT 7901 w/o LOFT  
UNIT 7902 w/o LOFT

BUILDING "20"  
UNIT 2001 w/o LOFT  
UNIT 2002 w/o LOFT

HEIDT AND ASSOCIATES, INC.

# AMENDED RIVER OAKS - CONDOMINIUM II

SECTION 28, TOWNSHIP 28 SOUTH, RANGE 19 EAST, HILLSBOROUGH COUNTY, FLORIDA

CERTIFIED COPY

NOT 92

OFF REC. 4318

**NOTES:**

- The boundaries of the units are the true substituted boundaries of the parcels shown, shown, shown, and shown.
- All dimensions shown refer to inside dimensions of walls with openings and are subject to slight variations which may occur during construction.
- Other plans were completed with units and lots supplied by The Florida Association, Inc., 1200 Miami Beach Blvd., Suite 101, Tampa, Florida 33617.

**BUILDING "16"**  
 UNIT 1601 w/o LOFT  
 UNIT 1602 w/o LOFT  
 UNIT 1603 w/o LOFT  
 UNIT 1604 w/o LOFT

**BUILDING "17"**  
 UNIT 1701 w/o LOFT  
 UNIT 1702 w/o LOFT  
 UNIT 1703 w/o LOFT  
 UNIT 1704 w/o LOFT

**BUILDING "18"**  
 UNIT 1801 w/o LOFT  
 UNIT 1802 w/o LOFT  
 UNIT 1803 w/o LOFT  
 UNIT 1804 w/o LOFT

**BUILDING "19"**  
 UNIT 1901 w/o LOFT  
 UNIT 1902 w/o LOFT  
 UNIT 1903 w/o LOFT  
 UNIT 1904 w/o LOFT

**BUILDING "20"**  
 UNIT 2001 w/o LOFT  
 UNIT 2002 w/o LOFT  
 UNIT 2003 w/o LOFT  
 UNIT 2004 w/o LOFT

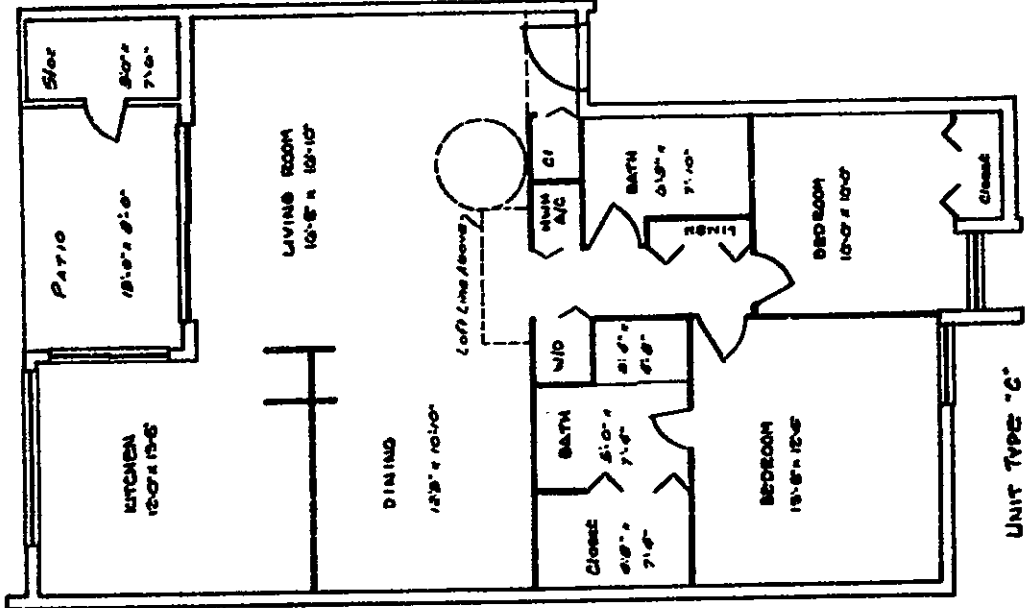
**BUILDING "21"**  
 UNIT 2101 w/o LOFT  
 UNIT 2102 w/o LOFT  
 UNIT 2103 w/o LOFT  
 UNIT 2104 w/o LOFT

**BUILDING "22"**  
 UNIT 2201 w/o LOFT  
 UNIT 2202 w/o LOFT  
 UNIT 2203 w/o LOFT  
 UNIT 2204 w/o LOFT

**BUILDING "23"**  
 UNIT 2301 w/o LOFT  
 UNIT 2302 w/o LOFT  
 UNIT 2303 w/o LOFT  
 UNIT 2304 w/o LOFT

**BUILDING "24"**  
 UNIT 2401 w/o LOFT  
 UNIT 2402 w/o LOFT  
 UNIT 2403 w/o LOFT  
 UNIT 2404 w/o LOFT

**BUILDING "25"**  
 UNIT 2501 w/o LOFT  
 UNIT 2502 w/o LOFT  
 UNIT 2503 w/o LOFT  
 UNIT 2504 w/o LOFT



UNIT TYPE "C"  
 SCALE: 1/8" = 1'-0"

- LEGEND:**
- C Closet
  - W/D Wash/Dryer
  - W/W Water Heater
  - A/C Air Conditioner
  - W/D Washer/Dryer
- BUILDING "21"**  
 UNIT 2101 w/o LOFT  
 UNIT 2102 w/o LOFT  
 UNIT 2103 w/o LOFT  
 UNIT 2104 w/o LOFT
- BUILDING "22"**  
 UNIT 2201 w/o LOFT  
 UNIT 2202 w/o LOFT  
 UNIT 2203 w/o LOFT  
 UNIT 2204 w/o LOFT
- BUILDING "23"**  
 UNIT 2301 w/o LOFT  
 UNIT 2302 w/o LOFT  
 UNIT 2303 w/o LOFT  
 UNIT 2304 w/o LOFT





# AMENDED RIVER OAKS - CONDOMINIUM II

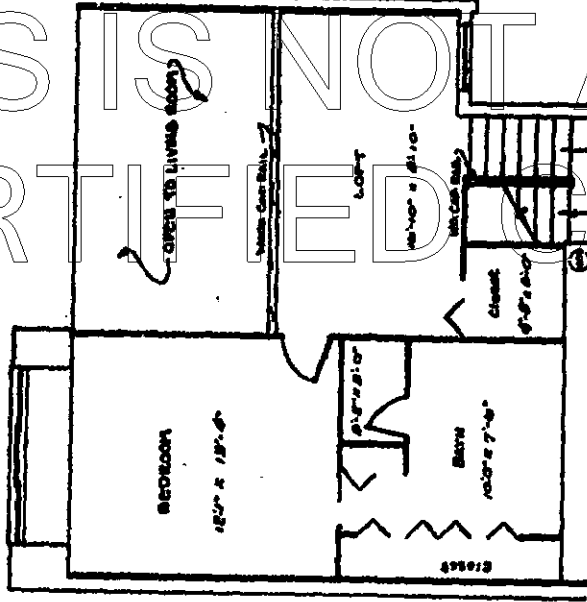
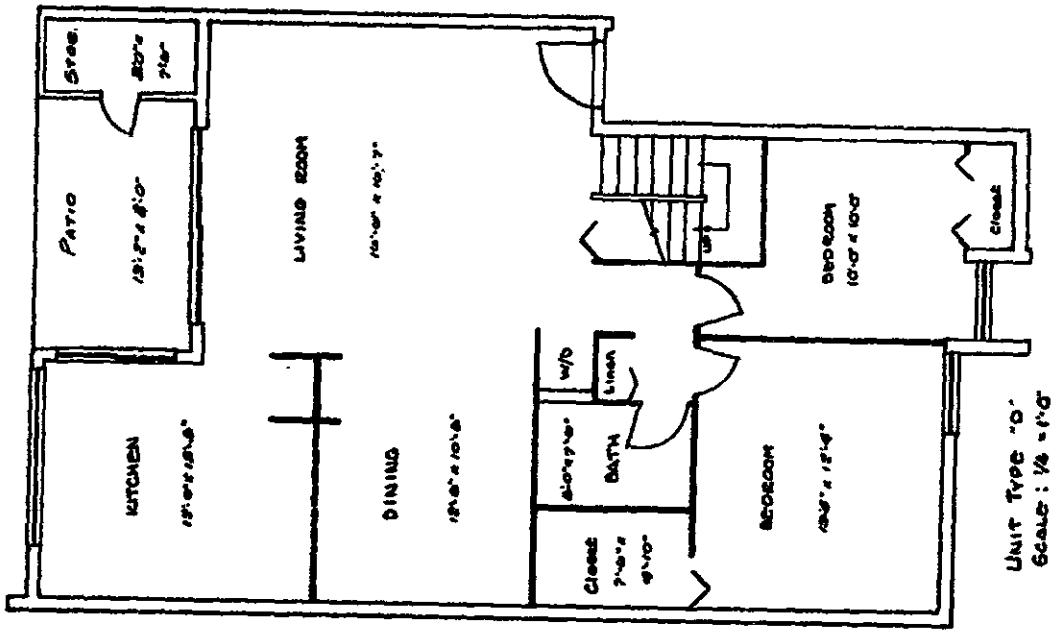
SECTION 28, TOWNSHIP 28 SOUTH, RANGE 19 EAST, HILLSBOROUGH COUNTY, FLORIDA

THIS IS NOT A CONTRACT

OFF REC: 4318 PB 93

**NOTES:**

- 1) The boundaries of the units are the center lines of the walls of the perimeter walls, floors, and ceilings.
- 2) All dimensions shown refer to inside dimensions of walls with rough-in doors and are subject to minor variations which may occur during construction.
- 3) These plans were created and checked and approved by The Design Associates, Inc., 220 South West Street, Suite 101, Tampa, Florida 33601.



Buildings 15  
UNIT 1503 - 7H  
UNIT 1505 - 7H  
UNIT 1507 - 7H  
UNIT 1509 - 7H  
UNIT 1511 - 7H

Buildings 16  
UNIT 1603 - 7H  
UNIT 1605 - 7H  
UNIT 1607 - 7H  
UNIT 1609 - 7H

LEGEND:  
C Closet  
W.C. Bath  
A/C Air Conditioning  
W/D Washer/Dryer

Buildings 20  
UNIT 2003 - 7H  
UNIT 2005 - 7H  
UNIT 2007 - 7H  
UNIT 2009 - 7H

Buildings 21  
UNIT 2103 - 7H  
UNIT 2105 - 7H  
UNIT 2107 - 7H  
UNIT 2109 - 7H

Buildings 22  
UNIT 2203 - 7H  
UNIT 2205 - 7H  
UNIT 2207 - 7H  
UNIT 2209 - 7H

Buildings 25  
UNIT 2503 (2520) - 7H  
UNIT 2505 (2520) - 7H  
UNIT 2507 (2520) - 7H  
UNIT 2509 (2520) - 7H



HEED &  
ASSOCIATES, INC.