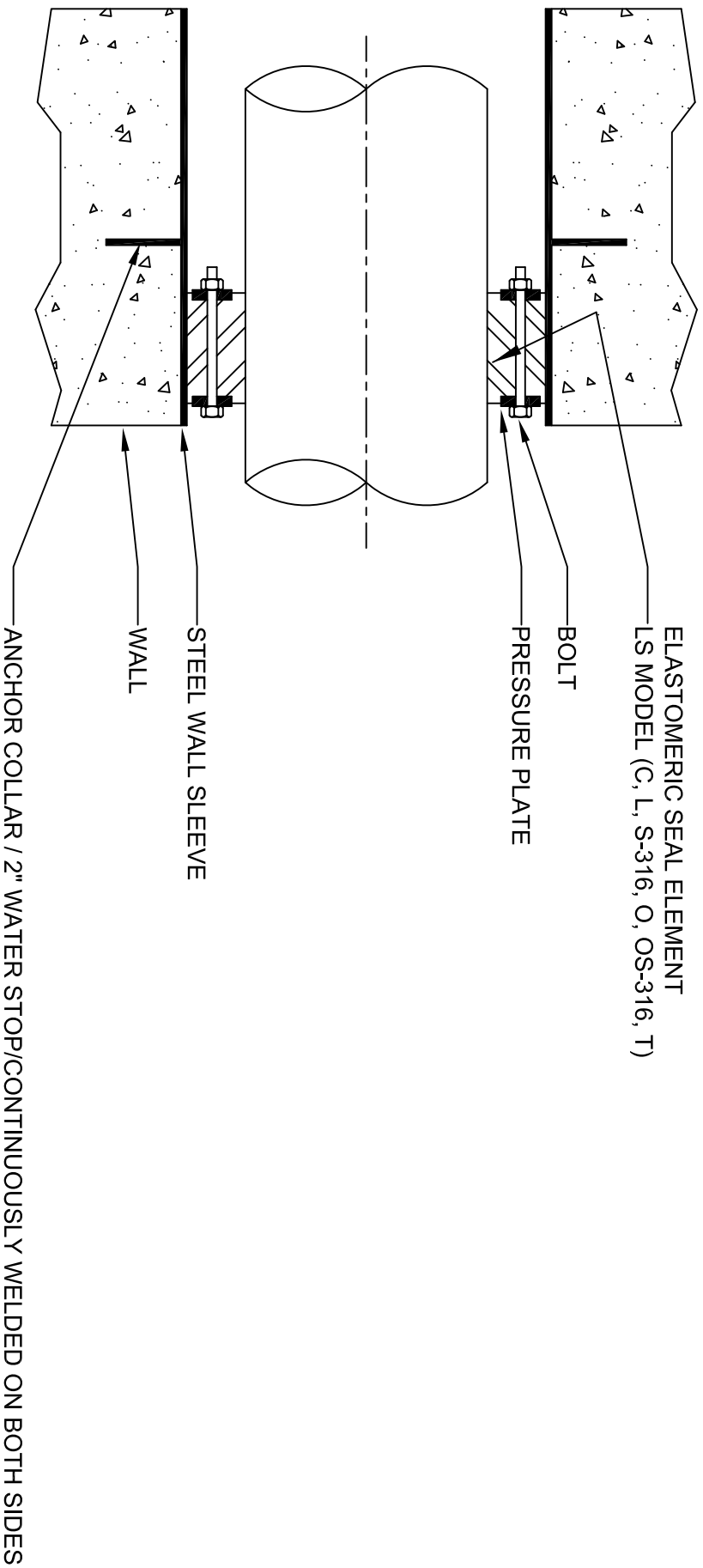


LINK-SEAL® MODULAR SEALS WITH MODEL WS STEEL WALL SLEEVES  
 MANUFACTURED BY PIPELINE SEAL & INSULATOR, INC.  
 HOUSTON, TEXAS, U.S.A. TEL: 800-423-2410 E-MAIL: INFO@PSIPSI.COM



LS Model	Seal Element	Bolts/Nuts	Pressure Plate
C	EPDM (Black)	Zinc Dichromate/Organic Coated Carbon Steel Bolt	Reinforced Nylon Polymer
L	EPDM (Blue)	Zinc Dichromate/Organic Coated Carbon Steel Bolt	Reinforced Nylon Polymer
O	Nitrile	Zinc Dichromate/Organic Coated Carbon Steel Bolt	Reinforced Nylon Polymer
T	Silicone	Zinc Dichromate/Organic Coated Carbon Steel Bolt	Steel Zinc Dichromate
(C,L,O)+S-316	(see model options)	316 Stainless Steel	Reinforced Nylon Polymer

Sleeve Model	Description	Material
CS	Century-Line Sleeve	HDPE
WS	Steel Wall Sleeve	Steel

For more Material Property Information, see literature at [www.linkseal.com](http://www.linkseal.com)