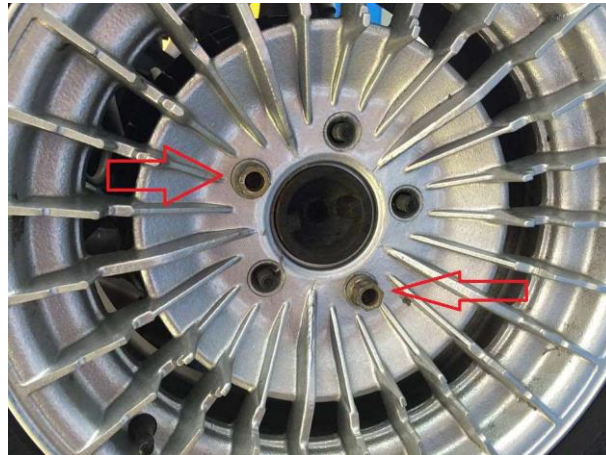
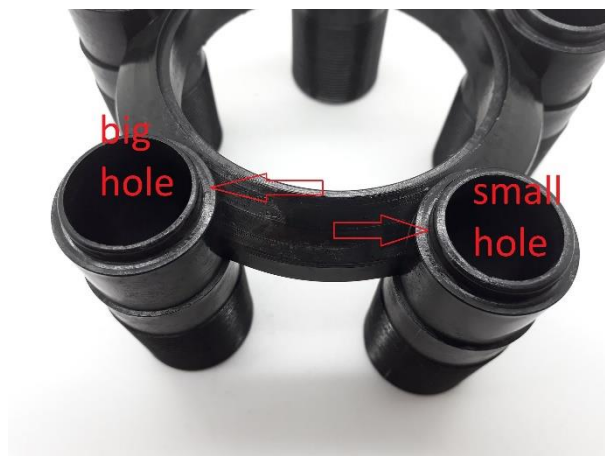


## KRW PLASTIC UNIVERSAL 15" HUBCAP KIT INSTALLATION STEPS

1. Install the rim on the car, and secure using two of your original lug-nuts. The lug-nuts must be installed as in the photo below (not side by side).



2. Look at the mounting bracket and observe the 2 holes that are larger than the others. These will be installed over the first 2 lug-nuts. While holding the bracket in place on the wheel, install the 3 flanged bolts that are supplied with the order, securing the bracket to the car: do not torque these down yet, as you will be removing the bracket shortly.



3. Install the hubcap on the bracket until it reaches the desired position, it will make some clicking noises as it goes over the adjusting grooves.

4. Carefully remove the three flanged bolts without pulling the cap from its position on the bracket. Lay the cap on a smooth clean surface to avoid scratching and install the five zip ties supplied on the appropriate grooves as shown below. This will keep the cap in the position you set and the cap and bracket are now a single piece.



5. Reinstall the cap assembly again and wheel is complete. If you want to install the caps on a different wheel at a later date, you will need to remove the zip ties to allow the cap and bracket to be adjusted to fit the new wheel.