

POWERS' PICKS \$15

Volume 8 Issue 14

October 22-26, 2020

© 2020 BP Sports, LLC

CFB/NFL Best Bets a Solid 20-14 (59%) So Far! Week 8 CFB Best Bets Pg 3, Week 7 NFL Best Bets Pg 7

Week 7 News and Notes!

For those of you that are new, in this section we'll recap what happened last week specifically, the misleading finals, the key injuries, the bad beats and the line moves. We'll include most of these recaps here, therefore you don't have to waste time reading about them in my game-by-game write-ups for the upcoming week. Without further adieu, here's a run down of what happened last week in the world of CFB.

Week 6 Trends Favorites-Dogs

Straight Up
ATS

22-6
17-10-1

Home-Away

Straight Up
ATS

17-11
14-13-1

Totals (O/U)

Over-Under

14-13-1

Season To-Date Favorites-Dogs

Straight Up
ATS

126-42
74-91-3

Home-Away

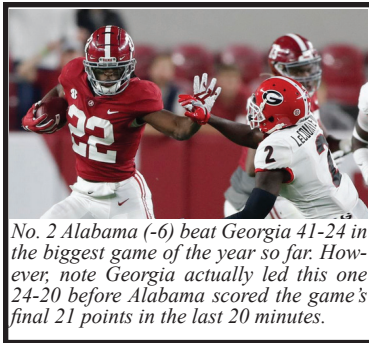
Straight Up
ATS

103-64
81-83-3

Totals (O/U)

Over-Under

89-77-3



No. 2 Alabama (-6) beat Georgia 41-24 in the biggest game of the year so far. However, note Georgia actually led this one 24-20 before Alabama scored the game's final 21 points in the last 20 minutes.

Largest Favorites to Cover:

Georgia Southern (-30.5) vs Massachusetts, 41-0
Clemson (-26.5) at Georgia Tech, 73-7

Biggest Money line Upsets:

Florida St +375 won 31-28 vs North Carolina (+13.5)
Coastal Carolina +270 won 30-27 at UL-Lafayette (+9)
Kentucky +190 won 34-7 at Tennessee (+6.5)

ATS Notables

Marshall is 4-0 ATS this year covering by an average of 16 ppg.
WKU is 0-5 ATS this year failing to cover by an average of 11 ppg.
Texas games are 4-0 to the OVER this year by an average of 20 ppg.
Alabama games are 4-0 to the OVER this year by an average of 17 ppg.
Army and Texas St games are 5-1 to the UNDER this year.

Misleading Finals

BYU (-3) beat Houston 43-26 but Houston had a 26-23 first down edge and were only out-gained 478-438. It was a back and forth game as BYU led 14-3, Houston scored the next 23 points to lead 26-14 only to have BYU score 29 points in the final 16 minutes!

Virginia Tech (-13) beat Boston College 40-14. However, BC had a 24-23 first down edge and were only out-gained 461-435. BC was -5 in TO's and it was 17-14 mid 3Q.

Wake Forest (-2.5) beat Virginia 40-23. However, Virginia had a 27-18 first down edge but were -3 in TO's. The game was tied 23-23 entering the 4Q.

South Carolina (+3) upset Auburn 30-22 cashing our top CFB play on these pages. However, Auburn had 27-20 first down and 481-297 yard edges but had 3 costly TO's (all Bo Nix Nix INT's) that led to three South Carolina TD's. Auburn also settled for 3 short FG's.

West Virginia (-21) beat Kansas 38-21. However, WVU dominated more than the final with 29-7 first down and 544-157 yard edges including 226-62 on the ground! After WVU took a 38-10 lead with 2 minutes left Pooka Williams returned the kickoff 92 yards for a TD for the backdoor cover for Kansas that also put the game over the total.

Kentucky (+6.5) upset Tennessee 34-7. However, the stats were even with both teams having 18 first downs and UK only having a 294-287 yard edge. The difference? Four Tennessee TO's all in the first half as UK got two "Pick 6's" to lead 14-0 in the second quarter.

Arkansas (-1) beat Ole Miss 33-21. However, Ole Miss had a 442-394 yard edge but had 7 TO's including a pair of "Pick 6's"! Ole Miss also got stopped on downs at the Arkansas 1-yard line. Ole Miss QB Matt Corral who came in with a 9-1 ratio, threw 6 INT's!

Army (-8.5) beat UTSA 28-16. However, the first downs were even and UTSA had a 383-358 yard edge. UTSA was stopped on downs inside the Army 25-yard line on each of their final two drives.

The Marshall/Louisiana Tech game was more lopsided than the 35-17 final as Marshall had 2 TO's, were stopped on downs twice and LT went 11 plays, 87 yards and scored a TD with :36 left.

Bad Beats

UCF (-3) backers saw the Knights blow a 35-14 second-half lead (school-record comeback for Memphis) and UCF still led 49-37 with 5 minutes left. UCF was stopped on downs inside the 5-yard line and also fumbled inside the Memphis 5-yard line earlier in the game otherwise they could have been dominating. Still, they found a way to lose 50-49.

Eastern Kentucky was +1500 on the money-line vs Troy as 30.5-point underdogs. However, ECU settled for 3 FG's of 25-yards or shorter and failed on a 2-point conversion after scoring a TD with :21 left to take the 29-28 lead. Somehow Troy went 30 yards in 3 plays and got a 47-yard FG on the final play to win.

Injuries/COVID Cases

The Oklahoma St/Baylor game was postponed due to positive cases at Baylor. The Cincinnati/Tulsa game was postponed due to positive cases at Cincinnati. The LSU/Florida game was postponed due to positive cases at Florida. The FIU/Charlotte game was postponed due to positive cases at FIU. The Vanderbilt/Missouri game was postponed due to positive cases at Vanderbilt. The Southern Miss/UTEP game was postponed due to positive cases at So Miss.

Army QB's Christian Anderson and Jemel Jones are ? this week vs Mercer.
East Carolina QB Holton Ahlers missed last week's Navy game due to COVID.
Kansas QB Jalon Daniels (foot) is ? this week vs Kansas State.
LSU QB Myles Breen (abdominal) is ? this week vs South Carolina.
Navy QB Dalen Morris (concussion) has been upgraded to probable vs Houston.
NC State QB Devin Leary (fibula) is out 4-8 weeks.
Pitt QB Kenny Pickett (ankle) is questionable vs Notre Dame.
Virginia QB Brennan Armstrong (concussion) is questionable vs Miami, FL.

Recapping Week Five Best Bets

We went 3-3 but still easily lead the newsletter contest (see below). Our top CFB play South Carolina was an outright upset winner but we did benefit from three Auburn TO's. The OVER didn't quite get there in the Duke/NC State game and Louisville nearly upset ND as a big underdog. We are now 11-5 on the season. We will take that. The NFL has been disappointing this year at 9-9. Our top play last week Minnesota was a disaster thanks to QB Kirk Cousins. San Francisco was an outright upset winner and then despite the fact the Cowboys closed as a 1-point favorite (we gave them out +2.5), they were crushed on MNF.

2020 Nationwide Football Newsletter Contest (Regular Season Only)

We are happy to provide you with the records, standings and plays used from the Power Sweep (3★, 4★ & Underdog), Gold Sheet (Key Releases), Power Plays (4.5★ for College 4★ for NFL), Sports Reporter (Best & Super Bets), Winning Points (Best Bets & Preferred), Playbook (3-5★'s), Pointwise (Ratings 1-4), Powers' Picks (1-4★'s) and the Sunday Night Owl Report (1-4★'s).

College					NFL					College/NFL Combined				
Newsletter	W	L	T	% Net	Newsletter	W	L	T	% Net	Newsletter	W	L	T	% Net
Powers' Picks	11	5	0	68.75%	Gold Sheet	15	9	0	62.50%	Powers' Picks	20	14	0	58.82%
Winning Points	14	12	1	53.85%	Pointwise	10	8	0	55.56%	Power Plays	6	6	0	50.00%
Power Plays	3	3	0	50.00%	Powers' Picks	9	9	0	50.00%	Pointwise	21	23	0	47.73%
Power Sweep	9	11	1	45.00%	Playbook	9	9	0	50.00%	Playbook	10	13	0	43.48%
Pointwise	11	15	0	42.31%	Power Plays	3	3	0	50.00%	Winning Points	21	28	1	42.86%
Gold Sheet	5	18	1	21.74%	Sports Reporter	6	6	0	50.00%	Gold Sheet	20	27	1	42.55%
Playbook	1	4	0	20.00%	Winning Points	7	16	0	30.43%	Power Sweep	12	20	1	37.50%
Sports Reporter	3	12	1	20.00%	Power Sweep	3	9	0	25.00%	Sports Reporter	9	18	1	33.33%
Combined	57	80	4	41.61%	Combined	62	69	0	47.33%	Combined	119	149	4	44.40%

CFB and NFL Schedules with Vegas and Brad Powers Lines Week 8 October 22nd-26th

NFL/CFB Thursday, Oct 22nd	Line	BP	All Times Eastern	Saturday, October 24th	Line	BP	All Times Eastern
303 N.Y. GIANTS 8:20 p.m. FOX/NFL Net	45	45		377 UNLV 10:30 p.m. CBSSN	49	48	
304 PHILADELPHIA	-4.5	-5		378 SAN DIEGO ST	-14.5	-14	
305 ARKANSAS ST 7:30 p.m. ESPN	67	65		379 AIR FORCE 10:30 p.m. FS1	-7	-6	
306 APPALACHIAN ST	-13	-11		380 SAN JOSE ST	61.5	58	
Friday, October 23rd				All Times Eastern			
307 TULSA 7:30 p.m. ESPN	-10.5	-11		381 WYOMING 7:00 p.m. CBSSN	-4.5	-4	
308 SOUTH FLORIDA	51	51		382 NEVADA	51	52	
309 UL-LAFAYETTE 8:00 p.m. CBSSN	50	51		383 SOUTHERN MISS 1:00 p.m. ESPN3	63	61	
310 UAB	-1	-3		384 LIBERTY	-11	-11	
387 ILLINOIS 8:00 p.m. Big Ten	51	53		385 MICHIGAN 7:30 p.m. ABC	-3	-3	
388 WISCONSIN	-19	-21		386 MINNESOTA	54.5	53	
397 JACKSONVILLE ST 7:00 p.m. ESPN3	59.5	58		389 GEORGIA ST 4:00 p.m. ESPNU	68.5	70	
398 FIU	-10.5	-10		390 TROY	-2.5	-2	
Saturday, October 24th				All Times Eastern			
311 GEORGIA TECH 4:00 p.m. ACC Network	54.5	58		392 CHARLOTTE	-14.5	-13	
312 BOSTON COLLEGE	-3.5	-4		393 MIDDLE TENNESSEE 4:30 p.m. ESPN3	50.5	52	
313 FLORIDA ST 12:00 p.m. ESPN3	61	60		394 RICE	-3.5	-4	
314 LOUISVILLE	-5	-8		395 LOUISIANA TECH 8:00 p.m. ESPNU	-2	57	
317 NOTRE DAME 3:30 p.m. ABC	-10.5	-7		396 UTAH	53	-1	
318 PITTSBURGH	43	41		403 KENTUCKY 4:00 p.m. SEC Network	-5.5	-7	
319 ALABAMA 3:30 p.m. CBS	-21	-22		404 MISSOURI	47	49	
320 TENNESSEE	66	62		399 MERCER 12:00 p.m. CBSSN	50	49	
321 NC STATE 12:00 p.m. ESPN	60.5	62		400 ARMY	-30.5	-29	
322 NORTH CAROLINA	-15.5	-14		401 CHATTANOOGA 4:00 p.m. ESPN3	53.5	54	
323 VIRGINIA TECH 3:30 p.m. ESPN3	-9.5	-11		402 WKU	-14	-14	
324 WAKE FOREST	68	65		NFL Wk 7 Sunday, October 25th			
325 SYRACUSE 12:00 p.m. ACC Network	61.5	62		451 CLEVELAND 1:00 p.m. CBS	-3	-2	
326 CLEMSON	-46	-48		452 CINCINNATI	50.5	50	
327 GEORGIA SOUTHERN 12:00 p.m. ESPNU	52	54		453 DALLAS 1:00 p.m. FOX	46	47	
328 COASTAL CAROLINA	-6.5	-4		454 WASHINGTON	PK	-1	
329 VIRGINIA 8:00 p.m. ACC Network	58	60		457 DETROIT 1:00 p.m. FOX	56	58	
330 MIAMI FL	-12.5	-14		458 ATLANTA	-2	-2	
331 TULANE 2:00 p.m. ESPN2	72.5	71		461 CAROLINA 1:00 p.m. FOX	51	51	
332 CENTRAL FLORIDA	-19.5	-17		462 NEW ORLEANS	-7.5	-5	
335 HOUSTON 3:30 p.m. CBSSN	-14	-16		463 BUFFALO 1:00 p.m. CBS	-13	-14	
336 NAVY	54.5	58		464 N.Y. JETS	45	46	
337 PENN ST 3:30 p.m. FS1	-6.5	-4		465 GREEN BAY 1:00 p.m. FOX	-3.5	-4	
338 INDIANA	59	56		466 HOUSTON	57	58	
339 RUTGERS 12:00 p.m. Big Ten	44.5	45		467 SEATTLE 4:05 p.m. FOX	-3.5	-2	
340 MICHIGAN ST	-13.5	-13		468 ARIZONA	56	58	
341 NEBRASKA 12:00 p.m. FOX	67.5	66		469 SAN FRANCISCO 4:25 p.m. CBS	44.5	44	
342 OHIO ST	-26	-24		470 NEW ENGLAND	-2	-4	
343 IOWA 3:30 p.m. Big Ten	-3	-4		471 KANSAS CITY 4:25 p.m. CBS	-9.5	-9	
344 PURDUE	54.5	52		472 DENVER	46	43	
345 BAYLOR 3:30 p.m. ESPN	61	63		473 TAMPA BAY 8:20 p.m. NBC	-3	55	
346 TEXAS	-9	-9		474 LAS VEGAS	53	-1	
347 CINCINNATI 9:00 p.m. ESPN2	56.5	58		479 JACKSONVILLE	49	49	
348 SMU	-2.5	-2		480 L.A. CHARGERS 4:25 p.m. CBS	-7.5	-7	
349 IOWA ST 3:30 p.m. FOX	52	-1		477 PITTSBURGH 1:00 p.m. CBS	50.5	-1	
350 OKLAHOMA ST	-3.5	53		478 TENNESSEE	PK	51	
351 OKLAHOMA 12:00 p.m. ABC	-6.5	-8		Monday, October 26th			
352 TCU	59.5	62		475 CHICAGO	45	43	
353 AUBURN 12:00 p.m. SEC Network	-3	-1		476 L.A. RAMS	-6	-7	
354 OLE MISS	70.5	69					
355 WEST VIRGINIA	-3.5	-5					
356 TEXAS TECH	54	57					
357 TEMPLE	71.5	75					
358 MEMPHIS	-13.5	-15					
359 KANSAS	48.5	50					
360 KANSAS ST 12:00 p.m. FS1	-20	-22					
361 SOUTH CAROLINA 7:00 p.m. ESPN	55.5	52					
362 LSU	-6	-4					
363 UL-MONROE 7:00 p.m. ESPN+	56.5	54					
364 SOUTH ALABAMA	-15	-16					
365 MARYLAND 7:30 p.m. Big Ten	54.5	51					
366 NORTHWESTERN	-11	-13					
367 TEXAS ST 10:15 p.m. ESPN	60	59					
368 BYU	-28.5	-31					
369 NEW MEXICO 9:00 p.m. FS2	Cancelled						
370 COLORADO ST	Cancelled						
371 UTAH ST 7:00 p.m. FS1	53	56					
372 BOISE ST	-16.5	-18					
373 FLORIDA ATLANTIC	51	50					
374 MARSHALL	-17	-18					
375 HAWAII 7:30 p.m.	67	62					
376 FRESNO ST	-4	-6					

4★ = BEST 3★ = BETTER 2★ = GOOD 1★ = FAIR	THE POWERS' PACK
	2★ PITTSBURGH (+10.5) over Notre Dame
	2★ Iowa St (+3.5) over OKLAHOMA ST
	1★ UNDER 55.5 South Carolina/LSU
	1★ OVER 53 Louisiana Tech/UTSA

Games in Rotation Order

HOME TEAM IN CAPS

Thursday, October 22nd

APPALACHIAN ST 38 Arkansas St 27. We haven't seen Appalachian St since September 26th due to COVID issues. The Mountaineers are 0-3 ATS despite being +147 ypg. They're taking on an Arkansas St team that has played 5 games this season. The Red Wolves are off a 59-52 shootout win over Georgia St as QB's Layne Hatcher and Logan Bonner combined for 551 yards passing and threw 7 TD passes! However, head coach Blake Anderson dismissed defensive coordinator David Duggan and defensive pass game coordinator Ed Pinkham afterwards. Anderson said safeties and special teams coach Nick Paremski will serve as interim defensive coordinator for the remainder of the season and a restructuring of the staff is pending. Even with that disruption we lean with the dog here.

Friday, October 23rd

Tulsa 31 SOUTH FLORIDA 20. Tulsa has only played two games this fall but they've been impressive in both nearly upsetting Oklahoma St and then pulling off the big upset over UCF. Still, they haven't played in 3 weeks. They're taking on a USF team that is 1-4 under first-year coach Jeff Scott but probably played their best game of the season last week in a near upset of Temple. USF got decent QB play for 2nd week in a row from Jordan McCloud who was 15 of 26 for 182 yards and 3 TD's. This line is right at our numbers. Not sure if there's much value here.

UAB 27 UL-Lafayette 24. A lot of money coming in on UL-Lafayette here as they will honor their assistant coach DJ Looney who suddenly passed away this off-season. We think the Cajuns have been a little over-valued as they are 0-3 ATS after pulling the upset over Iowa St in the opener. Last week, they lost outright at home to Coastal Carolina. Meanwhile, UAB is 4-1 on the season and playing their 3rd straight home game. Note UAB is on a 21-0 SU at home winning by 18 ppg and 15-4-2 ATS covering by 4.5 ppg. With this line close to pick-em we lean with the home team here.

WISCONSIN 37 Illinois 16. Welcome back to CFB Big Ten conference! Wisconsin is the clear cut favorite in the West division thanks to the return of 15 starters. They do lose all-everything RB Jonathan Taylor (6,174 career rush yards), their leading receiver Quintez Cephus and QB Jack Coan is out with injury. Highly-touted Graham Mertz will get the start. Meanwhile, Illinois comes in off a bowl season last year and brings back 9 starters on offense led by QB Brandon Peters. However, the Badgers do have revenge on their minds here after Illinois pulled off the biggest upset in nearly 40 years of Big Ten play last year beating Wisconsin 24-23 as 30.5-point underdogs! Safe to say, it won't happen again here.

FIU 34 Jacksonville St 24. Jacksonville St is 2-1 on the season and off back-to-back wins over FCS foes. Their head coach John Grass did test positive for COVID and might not be on the sidelines here. Meanwhile, FIU is 0-2 on the season but have had COVID issues all fall camp and have had a few games postponed. Our numbers say FIU by 10 and that is where the early line is.

Saturday, October 24th

BOSTON COLLEGE 31 Georgia Tech 27. Nice match-up here of two teams who look improved this year but have been inconsistent. Georgia Tech comes in off the crushing 73-7 loss to Clemson at home. It was the most points allowed by Georgia Tech since a 94-0 loss to Auburn in 1894. Meanwhile, Boston College is off a misleading 40-14 blowout loss at Virginia Tech. BC had a 24-23 first down edge and were only out-gained 461-435. The Eagles were -5 in TO's and it was just 17-14 mid 3Q. QB Jurkovec has thrown for 1,526 yards already and GT is allowing 308 pass yards per game. However, BC did allow 164 rush yards to mobile VT QB Hendon Hooker last week and face Jeff Sims (228 rush yards) here. Lean OVER.

LOUISVILLE 34 Florida St 26. Let's try to understand the line here. We've backed both teams the last two weeks at ND and won both games on these pages. Florida St was +21 and lost by 16. Louisville closed +15.5 and lost by 5. Louisville is better and at home so the Cards are laying at least 7 here right? Wrong! We think the market has overreacted to FSU's outright win over North Carolina last week. North Carolina had 27-16 first down and 558-432 yard edges and could have won the game in the end. Both teams also played Miami. Louisville was +31 yards but were done in by 3 TO's while FSU was outgained by 187 yards. FSU is -74 ypg on the season, Louisville is +4 ypg. Yes, the Noles are much better with Jordan Travis at QB but we think this line is cheap.

2★ PITTSBURGH (plus the points) Notre Dame 24 PITTSBURGH 17. We think Notre Dame is one of the more overrated teams in the country this year and that's why we went against them on these pages the last two weeks and will do so again here. First, who in the heck have they played? Four teams who are a combined 3-16 vs FBS competition this year! Yes, Pitt is on a 0-4-1 ATS run and it looks like their QB Kenny Pickett will be out for this game as well. However, QB Joey Yellen isn't a huge downgrade and Pitt is better than their record out-gaining their opponents by 116 ypg. Their run defense also matches up well with ND's offense as they only allow 62 rush ypg (1.9 ypc). ND has no vertical pass game this year (Book only 7.6 ypa) and this is their first road game of the season. Finally, Pitt tends to play ND really tight as 10 of the last 12 meetings have been decided by 8 points or less.

ALABAMA 42 Tennessee 20. It doesn't get much more impressive than Alabama's second half performance vs Georgia last week outscoring the Bulldogs 21-0. Alabama had 33-20 first down and 564-414 yard edges and were much more explosive in the pass game with a 12.6-6.7 yards per pass advantage. Alabama also benefited from 3 UGA INT's. Meanwhile, Tennessee comes in reeling off back-to-back losses. Last week, Tennessee lost at home to Kentucky for the first time since 1984. The stats were even with both teams having 18 first downs and UK only having a 294-287 yard edge. The difference? Four Tennessee TO's all in the first half as UK got two "Pick 6's". To no surprise QB Jarrett Guarantano continues to be inconsistent and head coach Pruitt also used J.T. Shrout and freshman Harrison Bailey under center. Neither was effective. The third Saturday in October has become tradition. It means an Alabama win and cover as the Tide are 13-0 SU (+25 ppg) and 9-4 ATS (+5 ppg) vs the Vols since Saban took over 2007. However, we lean UNDER as Alabama totals are starting to get pricey considering their 4-0 start.

NORTH CAROLINA 38 NC State 24. We thought we were going to take North Carolina here with the Tar Heels off their first loss of the season and NC State sitting at 4-1, but overrated as they are -28 ypg. The Wolf Pack are also without QB Devin Leary (8-2 ratio) who broke his fibula last week vs Duke. However, this line is way too pricey for our liking. Bailey Hockman (2-3 ratio) will get the start here for the Wolf Pack who are in their largest underdog role in the series since 1996.

Virginia Tech 38 WAKE FOREST 27. Virginia Tech had a misleading 40-14 win over BC last week as the Hokies were +5 in TO's. However, owned the line of scrimmage with a 350-90 rushing yard edge. Remember, Tech played without more than 20 players in wins over NC State and Duke and without 15 in the loss to the Tar Heels – and missed coaches in all of those games. But only two starters were out against the Eagles (one because of an injury), all the coaches were available, and Hooker looked comfortable in his first start of the season. They're taking on a Wake Forest team who beat Virginia 40-23. However, Virginia had a 27-18 first down edge but were -3 in TO's. The game was tied 23-23 entering the 4Q. Not sure we see a ton of current value here as the line has seen VT go from -7.5 to -10.

CLEMSON 55 Syracuse 7. This is the largest favorite role ever for Clemson vs a FBS team and the largest underdog role ever for Syracuse (previous high was +38 at Florida St in 2013). Syracuse's roster numbers are more akin to an FCS school than an ACC school because of injuries and Covid-19 opt-outs. Fewer than 60 scholarship players are suiting up for the Orange (the FCS scholarship limit is 63), and of those, nearly half are freshmen. The Orange are -220 ypg and are getting owned at the line of scrimmage as they are out-rushed 253-81 on average. Meanwhile, Clemson is off a 73-7 win at Georgia Tech last week. Clemson QB Trevor Lawrence brushed off the first interception he has thrown this season and passed for a career-high 404 yards and five touchdowns. Not interested here but our power ratings actually say Clemson is the play!

COASTAL CAROLINA 29 Georgia Southern 25. We have been big Coastal Carolina fans on these pages this year and the Chanticleers are 4-0! Last week, CC controlled the clock with 38:11-21:29 TOP edge in their upset win over UL-Lafayette. QB Grayson McCall continues to impress with an 11-1 ratio this year. However, this is where we jump off the bandwagon a bit as they are ranked for the first time ever and we think you're starting to pay a premium. We're not huge fans of Georgia Southern this year but they are a tradition-rich program that thrives in the underdog role (see upsets over ranked Appalachian St teams).

MIAMI, FL 37 Virginia 23. Last week Miami only had 21-19 first down and 331-300 yard edges in a lull cluster 31-19 win over Pitt (Miami still covered the closing line). QB D'Eriq King was 16 of 31 for 222 yards and 4 TD's but also threw 2 INT's. "We were disappointed and a little bit angry coming off last week," Miami coach Manny Diaz said. "That's a difficult situation — you have a noon kickoff, not a super juicy environment because of the restrictions that we have and against a team with a sense of desperation. For those guys to go out there and know that it was not going to be an easy game regardless of your mental mindset says a lot about the leadership of our football team." Now they take on a Virginia team off a misleading blowout loss to Wake Forest (see page 1). Do the Cavaliers get back QB Brennan Armstrong here? This current line of 11.5 says they do. However, regardless of who lines up under center for them, we lean home team.

UCF 44 Tulane 27. We're starting to see a pattern for UCF under head coach Josh Heupel. While super talented for a Group of 5 program, the Knights are undisciplined ranking dead last with 55 penalties in 4 games. That might be a reason why they continue to lose close games the last couple of years. Last week, the Knights blew a 35-14 second-half lead (school-record comeback for Memphis) and UCF still led 49-37 with 5 minutes left. UCF was stopped on downs inside the 5-yard line and also fumbled inside the Memphis 5-yard line earlier in the game otherwise they could have been dominating. Still, they found a way to lose 50-49. They take on a scrappy Tulane team that hung in with a ranked SMU last week. Tulane's rush attack averaging 233 ypg should have success vs UCF's rush defense. Lean dog.

Houston 37 NAVY 21. We thought we were going to be all over Houston here but the line came higher than expected. The Cougars lost 43-26 to BYU last Friday but Houston had a 26-23 first down edge and were only out-gained 478-438. It was a back and forth game as BYU led 14-3, Houston scored the next 23 points to lead 26-14 only to have BYU score 29 points in the final 16 minutes! They're taking on an overrated Navy team that is somehow 3-0 in conference play. Last week, they benefited from playing a backup QB vs ECU and the Mids were still outgained. They are now -157 ypg on the season. Both teams won and covered vs Tulane and lost and failed to cover vs BYU. The difference? Navy was outgained by a combined 454 yards while Houston was +225. We lean favorite and OVER here.

Penn St 30 INDIANA 26. If this line looks cheap to you, it isn't. Indiana is a borderline Top 25 team in our power ratings. The Hoosiers won 8 games a year ago and return 16 starters and QB Michael Penix returns from injury. They think it is their best team in a generation. While they are 1-22 SU vs Penn State since the Nittany Lions joined the Big Ten in 1993, Indiana has only lost by 5 and 7 points the last two years and outgained Penn St 462-371 in Happy Valley last year. Meanwhile, Penn State saw their top defensive player Micah Parsons opt out and now breaking yesterday is that RB Journey Brown (12 rushing TD's last year) may miss the season. Penn State has a home game vs Ohio St on deck. Take the dog.

MICHIGAN ST 29 Rutgers 16. Michigan St is the one team we want to play against this year in the Big Ten. Their new head coach Mel Tucker was hired after signing day, the Spartans do not spring practice and return only 8 starters as a few key players opted out. The problem is they open up here vs the worst team in the league and the Scarlet Knights have a new head coach themselves. Rutgers will improve under Greg Schiano but will it be this year? They do return 16 starters and bring in a bunch of Power 5 transfers. However, they were -33 ppg and -241 ypg in Big Ten play last year and lost by 27 at home to MSU. We pass.

OHIO STATE 45 Nebraska 21. Both teams wanted to play this season but we don't think it's a coincidence that the Big Ten stuck Nebraska with the Buckeyes in the opener after they threatened to sue the conference. Ohio State has owned Nebraska since the Huskers joined the Big Ten in 2011. The Buckeyes are 5-1 SU (+27.5 ppg) and 5-1 ATS (+15.8 ppg). While Nebraska should be improved this year we're a bit cautious after they failed to meet expectations last year. Meanwhile, Ohio State is a legit National Title contender. This is the 2nd largest underdog role for Nebraska ever (+30 at Oklahoma in 2004). We lean Huskers here as Buckeyes could hold a little back with Penn State on deck.

Iowa 28 PURDUE 24. We think Purdue is a "Play On" team this year after a disappointing 4-8 season that saw the Boilers decimated by injuries. All-everything WR Rondale Moore decided to opt back in and leads 17 returning starters. Meanwhile, Iowa head coach Kirk Ferentz enters his 22nd season after going 10-3 last year. However, the Hawkeyes have had off-field issues (racial unrest and mis-treatment of players). Spencer Petras will be the new QB for them after 3-year starter Nate Stanley departs. Purdue head coach Jeff Brohm tested positive for COVID and his brother Brian will be the coach here. Iowa is on a 21-0 SU (+17.6 ppg) and 17-3-1 ATS (+10.9 ppg) run as a road favorite since late 2011. That keeps us off Purdue.

TEXAS 36 Baylor 27. This one is a tough handicap for us as we want to play against both teams. First, we want to go against Baylor. The Bears have a first-year coach, are inexperienced especially on defense, have had COVID issues all fall and have only played two games. On the other side, we have an overrated Texas team off back-to-back losses including a 4OT thriller to rival Oklahoma. The major news in Austin is controversy about the "Eyes of Texas" song and the team chemistry could be a concern. The on-field controversy is how Texas continues to under-perform despite an offense averaging 495 ypg and 50 ppg. How about a defense allowing 456 ypg and 47 ppg the last 3 games. We're passing.

SMU 30 Cincinnati 28. Cincinnati hasn't played the last couple of weeks and has had COVID issues. They've only played 3 games so far (all at home) and are taking a major step up in competition here. Meanwhile, SMU is 5-0 for the second straight season, a feat it last accomplished in 1983. However, the Ponies have been fortunate this season with 3 wins by 7 points or less. QB Shane Buechele does have 1,710 pass yards and a 12-2 ratio this season but will be playing against the best defense he's seen all year. Don't see much value here at the current line but note all the early money has been on SMU (Cincy opened a favorite).

2★ Iowa St 27 OKLAHOMA ST 26. We like the dog here. However, let's talk Oklahoma State first who has been off the last couple of weeks. We think the Cowboys are overrated especially considering they are No. 6 in the AP Poll. The Cowboys outscored Tulsa 13-0 in the 4Q to avoid a big upset loss (were out-gained). Then Oklahoma St had a misleading 14-point win over West Virginia as they got a long fumble recovery TD and scored in the final 90 seconds (were out-gained). So what they crushed Kansas by 40 in their last game (who doesn't). Meanwhile, Iowa State got downgraded too much in the market after the upset loss to UL-Lafayette in the opener. They've won 3 straight since and have the better QB here as Purdy is better than either Spencer Sanders or Shane Illingworth (both expected to play). Iowa St is on a 19-7-2 ATS run (+6.6 ppg) as a dog.

Oklahoma 35 TCU 27. The Sooners come in off the bye after a thrilling 4OT win over rival Texas. After losing 2 straight games and being benched early vs the Longhorns, Sooner QB Spencer Rattler kept his composure and delivered in the extra sessions. He should have renewed confidence. They're taking on a TCU team and program that just seems a bit off as of late. The Horned Frogs lost outright as a double-digit favorite in their last game to Kansas State and are now on a 6-15-1 ATS (-7 ppg) run at home the last 5 years. We lean road team.

Auburn 35 OLE MISS 34. Last week we won on these pages fading Auburn in their upset loss to South Carolina. It should be noted Auburn had 27-20 first down and 481-297 yard edges but had 3 costly TO's (all Bo Nix Nix INT's) that led to three South Carolina TD's. Auburn also settled for 3 short FG's. On the other side, Ole Miss had a 442-394 yard edge but had 7 TO's including a pair of "Pick 6's" in a 33-21 loss to Arkansas! Ole Miss also got stopped on downs at the Arkansas 1-yard line. Ole Miss QB Matt Corral who came in with a 9-1 ratio, threw 6 INT's! Clearly, that game was the out-lier. Don't see a ton of value here but we lean home team.

West Virginia 31 TEXAS TECH 26. Texas Tech comes in off a bye at 1-3 and 2nd-year head coach Matt Wells is starting to feel a little bit of heat. Henry Colombi will get the start at QB here in place of the often-injured Alan Bowman. They're taking on a West Virginia team that is better than the scoreboard the last few games. The Mountaineers are +226 ypg on the season and crushed Kansas way worse than the 38-17 final last week (544-157 yard edge). The reason they didn't cover was a 92-yard kick return TD in the final 2 minutes. RB Leddie Brown already has 515 rushing yards, QB Jarret Doege is completing 64% with a 8-3 ratio and the defense is allowing just 240 ypg. We lean with the road team.

MEMPHIS 45 Temple 30. There's good news and bad news for Memphis. The good news is that last week, they pulled off the biggest comeback in school history beating UCF for the first time in 14 tries 50-49. The Tigers trailed 35-14 early 2H and still trailed 49-37 with under 5 minutes left but pulled out a major confidence-boosting win. The bad news is that WR Demonte Coxie left the team. On the other side, we haven't been impressed with what we've seen from Temple so far. They lost outright at a bad Navy team and then almost lost outright to another bad team in USF last week (trailed 31-20). We lean home team and OVER here.

KANSAS ST 36 Kansas 14. Kansas St is on a 11-0 SU (+25.8 ppg) and 8-3 ATS (+10.7 ppg) run vs in-state rival Kansas. Kansas is a pathetic 0-4 SU this year getting outscored by 28 ppg and out-gained by 191 ypg. They just saw their best player RB Pooka Williams opt out of the season. Pooka was the reason they got the back-door last week vs West Virginia as he had a 92-yard kick return TD. Meanwhile, Kansas St is off a bye. The Wildcats have 3 straight wins but note they are -88 ypg. QB Skylar Thompson is out for the season and true freshman Will Howard will start here. Howard did start in the upset win at TCU in their last game and also got them the win vs Texas Tech so we don't think it's a significant downgrade.

1★ UNDER 55.5 LSU 28 South Carolina 24. Last week we cashed on these pages with South Carolina in their outright upset win over Auburn. It should be noted Auburn had 27-20 first down and 481-297 yard edges but had 3 costly TO's (all Bo Nix Nix INT's) that led to three South Carolina TD's. Still, we haven't seen a bad performance yet from this South Carolina team. The same can't be said for their opponent LSU which has already been upset twice as a big favorite this season. Those losses haven't looked any better considering Missouri and Mississippi St have combined for ZERO wins against teams other than LSU. The Tigers defense is allowing 495 ypg but they match-up much better with South Carolina here and we expect LSU CB Derek Stingley to take away SC WR Shi Smith. Note LSU QB Myles Brennan (11-3 ratio) is unlikely to play. If he can't go, they will have to go to a couple of true freshman under center. We expect a conservative game-plan.

SOUTH ALABAMA 35 UL-Monroe 19. Outside of UMass, a case could be made that UL-Monroe is the worst team in the FBS this year. The Warhawks are 0-5 getting outscored by 23 ppg and outgained by 137 ypg. They come in off a bye and take on an improved South Alabama team that got their first win in their new stadium last week (30-20 over Texas St). Desmond Trotter returned at QB and they need to play him more as he averages 2 more yards per pass attempt, completes 10% more of his passes and is a better runner than Chance Lovertich. However, laying doubles is not something we want to do here. The Jaguars are 2-10-1 ATS in that role all-time failing to cover by 6 ppg.

NORTHWESTERN 32 Maryland 19. Northwestern is a team we want to play on this year. They are coming off a poor 3-9 season but will be much improved. They were scheduled to return 19 starters but three have opted out in LT Rashawn Slater, DE Samdup Miller and S Travis Whillock. Indiana transfer Peyton Ramsey will start at QB as the Wildcats have a new O.C. for the first time in a decade after averaging just 16 ppg last year. Meanwhile, Maryland also had numerous opt outs and we're not big fans of head coach Mike Locksley who is only 6-40 SU as a head coach. The only thing preventing us from making this a stronger recommendation is Northwestern and their current 5-14 ATS run as a double-digit favorite.

BYU 45 Texas St 14. How can you not be impressed with this BYU team? Last week, they faced some real adversity for the first time this season as they trailed a solid Houston team 26-14 late 3Q. What did the Cougars do? How about score the game's final 29 points. BYU is now outscoring their opponents by 30 ppg and are +253 ypg. QB Zach Wilson deserves Heisman consideration as he is completing 78% of his passes with a 12-1 ratio. They're taking on a reeling Texas St team that after a strong start has lost by double-digits the last two weeks. This is their 5th straight road game and they're playing in elevation. Despite the big number, we could only look towards the big favorite here.

The New Mexico at Colorado State game has been cancelled due to COVID issues at New Mexico.

BOISE ST 37 Utah State 19. Welcome to the 2020 CFB season Mountain West Conference! You have the flagship program here in Boise St who is again the clear-cut favorite. The Broncos are off a 12-2 season and return many of their top players including QB Hank Bachmeier who should be improved after his true fresh season had ups and downs. They're taking on a Utah State team that returns 13 starters but loses all-everything QB Jordan Love. Utah transfer Jason Shelley will get the start at QB. We lean home team and OVER.

MARSHALL 34 Florida Atlantic 16. All the money has come in on Marshall and for good reason. The Thundering Herd are now 4-0 SU and 4-0 ATS on the season. They are outscoring their opponents by 27 ppg and outgaining them by 165 ypg. Marshall is really controlling the line of scrimmage on defense allowing just 69 rush ypg and last week held WKU to only 7 rushing yards. They're taking on a FAU team that is one of the least experienced teams in the country. The Owls have a new coach in Willie Taggart, have played only one game this season due to COVID issues and will get thumped here.

FRESNO ST 34 Hawaii 28. Two teams with first-year head coaches. We think Fresno St will be in better shape with Kalen DeBoer returning as he was the O.C. here in 2017-18. He also kept O.C. Ryan Grubb. The Bulldogs return 14 starters led by RB Ronnie Rivers and Washington transfer Jake Haener will be the starter at QB. On the other side, new Hawaii coach Todd Graham was hired late in the process and has only 11 returning starters. His offense will take some time to implement and he didn't have the typical off-season. A 4-8 team from last year favored over a 10-5 team. We agree!

SAN DIEGO ST 31 UNLV 17. Another Mountain West game and another one with two new head coaches. Marcus Arroyo (former Oregon O.C.) takes over UNLV and already has made major waves on the recruiting trail. However, we weren't overly impressed with the "X's and O's" of Oregon's offense the last couple of years. As of press time, the Rebels have not named a starting QB. Meanwhile, Brady Hoke is head man again at San Diego St. He was the DL coach here last year. The Aztecs bring back 14 starters from a 10-win team and Carson Baker will get the nod at QB. Each of the last two meetings have been close but we'll just call this one near the line which is relatively close to our power ratings.

Air Force 32 SAN JOSE STATE 26. Air Force crushed Navy in their only game this season 40-7 as the Falcons racked up an impressive 369-90 rushing yard edge. They take on a San Jose State team that doesn't do well at the line of scrimmage getting out-rushed 232-89 last year. Still, the Spartans just missed out on a bowl last year and return 13 starters. However, they must replace QB Josh Love and it looks like it will either be Nick Starkel or Nick Nash. Note that Air Force only has 61 players on their roster and depth will be a concern as the season goes along. Pass.

Wyoming 28 NEVADA 24. Wyoming has covered all 4 meetings as Mountain West foes and last year won 31-3. Wyoming comes in off a 8-5 season and will go to Sean Chambers at QB who is once again healthy. They should have a powerful run game thanks to the return of RB Xazavian Valladay (1,265 yards) and all 5 starters on the offensive line. It should be noted they did lose 3 projected starters on defense in the last month. Meanwhile, Nevada returns 17 starters including 10 on offense from last year. However, head coach Jay Norvell has temporarily left the team after his father passed away this week. Not sure we see a ton of value here.

LIBERTY 36 Southern Miss 25. Liberty is off to a 5-0 start. The Flames have out-gained their opponents by 189 ypg and are owning the line of scrimmage with a 268-101 rushing ypg edge. Last week, they got their first win ever against a Power Five conference team as they hammered Syracuse 38-21. Meanwhile, Southern Miss is 1-3 this season and they have had COVID issues with multiple games being postponed including last week vs UTEP. Interim coach Scotty Walden just tested positive and if it weren't for a 10-point win at North Texas a few weeks back, we'd say they have waved the white flag on the season.

Michigan 28 MINNESOTA 25. Little Brown Jug to open up the Big Ten season! Michigan is on a 30-3 SU (+22 ppg) run in the series since 1980 and are 22-11 ATS (+6.3 ppg). However, this is a different Minnesota program considering the Gophers come in off a 11-win season and return 9 starters on offense led by QB Tanner Morgan who had a 30-to-7 ratio last year. Also noteworthy is All-American WR Rashod Bateman opting back in. Meanwhile, Michigan lost their last two games of 2019 and also lost 10 players to the draft. Surprisingly, Joe Milton will make his first career start at QB for them and they did have a couple players opt out. Since late 2006, Michigan is 1-20 on the road vs ranked teams losing by an average of 15 ppg and 6-15 ATS failing to cover by 8 ppg. We would take Minnesota here but head coach PJ Fleck hinted at the possibility of several players missing due to COVID.

TROY 36 Georgia St 34. Georgia St comes in at 1-2 but we have been impressed with their offense so far which is averaging 44 ppg and 496 ypg and is well balanced averaging 246 rush ypg and 249 pass ypg. Last week they lost a shootout at Arkansas St 59-52 but we came away impressed with their QB Cornelious Brown who threw for 314 yards and 3 TD's while also rushing for 83 yards and 2 TD's. On the other side, Troy was very fortunate to win outright as 30.5-point favorites last week. Eastern Kentucky settled for 3 FG's of 25-yards or shorter and failed on a 2-point conversion after scoring a TD with :21 left to take the 29-28 lead. Somehow Troy went 30 yards in 3 plays and got a 47-yard FG on the final play to win. Georgia St ran over Troy last year with 390 rush yards in a 52-33 win but we think this line is fair. We do lean OVER.

CHARLOTTE 31 Utep 18. UTEP's game last week vs Southern Miss was cancelled due to COVID issues at Southern Miss. The 3-2 Miners have been a much improved team this year especially on defense as they are only allowing 23 ppg and 101 rush ypg. Meanwhile, Charlotte has only played three games this year with multiple games cancelled including last week vs FIU. They are 3-0 ATS this year and this is their first home game of the season. However, it's tough laying more than 2 TD's especially with a low total. Also Charlotte struggled with a far lesser UTEP team last year in a 28-21 win.

RICE 28 Middle Tennessee 24. Welcome to the 2020 CFB season Rice who plays their season opener here while Middle Tennessee has already played 6 games. For those of you that want to play on Middle Tennessee here due to their game experience, we'll mention this again... Teams who are playing their first game of the season are 23-9-2 ATS this year against teams who have already played. It is better to have film on your opponent! We expect the Owls to be much improved as they won their final 3 games of 2019 and are an experienced team with 16 returning starters. Meanwhile, after we thought Middle Tennessee was starting to improve with 3 straight covers, they took a step back last week in allowing 768 yards to North Texas in a 17-point loss. This line is right near our power ratings.

1★ OVER 53 UTSA 29 Louisiana Tech 28. UTSA comes in off 3 straight losses but we've been more impressed with them in their losses than their 3 earlier wins this year. Last week, they should have covered vs Army as the first downs were even and UTSA had a 383-358 yard edge. UTSA was stopped on downs inside the Army 25-yard line on each of their final two drives. It should be noted that QB Lowell Narcisse got hurt but they can go back to the regular starter Frank Harris here. RB Sincere McCormick has 702 rush yards already! On the other side, the Marshall/Louisiana Tech game was more lopsided than the 35-17 final as Marshall had 2 TO's, were stopped on downs twice and LT went 11 plays, 87 yards and scored a TD with :36 left. We like UTSA in an upset however, we prefer the OVER. Louisiana Tech games have seen some suppressed scoring lately because they just faced a slow tempo UTEP team and a great defense in Marshall. Meanwhile, UTSA just faced the option and two great defenses in UAB and BYU. Finally, you never have to worry about weather in the dome.

Kentucky 28 MISSOURI 21. Two weeks ago we said Kentucky was underrated due to TO's as they were -4 in close losses to Auburn and Ole Miss. Flash forward two games and the Wildcats have been +8 in TO's in two blowout wins vs Mississippi St and Tennessee. UK has three "Pick 6's" in those games and nearly have a 4th that was returned 76 yards to the 2-yard line. Last week, they got their first win in Neyland Stadium since 1984. The 27-point win was the Wildcats' largest margin of victory in Knoxville since 56-0 in 1893 and their most lopsided victory in the series since 1935. Now they take on a Missouri team that saw their game vs Vanderbilt cancelled last week. Their QB Connor Bazelak is completing 71% of his passes. Our numbers say Kentucky is the play here but not as strong as the last two weeks.

ARMY 39 Mercer 10. Mercer has only played one game so far losing 34-28 at Jacksonville St two weeks ago. They do see the option every year by playing the Citadel and Wofford so this shouldn't be foreign to them. Meanwhile, Army is off to a 5-1 start to the season but have benefited from a soft schedule. Their top 3 QB's were out last week and Freshman QB Cade Ballard got the start in the win at UTSA which was misleading (see page 1). Our power ratings have this one near the line but we certainly don't want to lay a big number with Army here who is 22-35-1 ATS (39%) as a double-digit favorite since 1980 and that numbers is 32% when increasing it to a 3-TD or more favorite.

WESTERN KENTUCKY 34 Chattanooga 20. WKU is now 0-5 ATS on the season failing to cover by 11 ppg. Their offense has left a lot to be desired as they are only averaging 19 ppg and 282 ypg. The switch to QB Kevaris Thomas didn't work last week in a 37-14 loss at UAB. They're taking on a Chattanooga team that hasn't played so far this season. The Mocs went 6-6 last year and have a 2nd-year coach in Rusty Wright. This looks like a good spot for WKU to get right here but we don't see much value in the 2-TD spread.

BP Sports VIP Service
 Get CFB/NFL/CBB/NBA Action Through July 2021!
Just \$499
 bradpowersports.com
 Follow Brad on Twitter: @BradPowers7

Updated College Football Power Ratings for Week 8

Rank	Team	Pre	10/21	Rank	Team	Pre	10/21	Rank	Team	Pre	10/21	Rank	Team	Pre	10/21	Rank	Team	Pre	10/21
1	Clemson	96.42	100.42	33	TCU	75.70	75.20	65	Georgia Tech	69.11	68.11	97	Miami (OH)	59.52	59.02	103	Western Kentucky	66.17	57.17
2	Ohio State	98.16	98.16	34	Memphis	76.61	75.11	66	UCLA	68.16	67.66	104	San Jose State	57.00	57.00	104	Tulane	66.41	65.41
3	Alabama	94.97	97.97	35	Nebraska	75.01	75.01	67	Buffalo	67.60	67.60	105	Kent State	56.69	56.69	106	Ohio	64.80	64.80
4	Georgia	89.50	91.50	36	Baylor	74.37	74.37	68	Illinois	67.52	67.52	106	East Carolina	57.91	55.41	107	Colorado	64.73	64.73
5	Florida	87.90	86.90	37	Boise State	74.07	74.07	69	Michigan State	67.71	67.21	107	Syracuse	62.38	55.38	108	Coastal Carolina	57.39	64.39
6	Wisconsin	87.48	86.48	38	Stanford	74.98	73.98	70	UL-Lafayette	68.86	66.36	108	Arizona	65.24	64.24	109	Arizona	65.24	64.24
7	Penn State	86.17	85.67	39	Cincinnati	74.79	73.79	71	Duke	67.85	66.35	109	San Diego State	64.12	64.12	109	San Diego State	64.12	64.12
8	Oregon	86.52	85.02	40	California	74.06	73.56	72	Tulane	66.41	65.41	110	Rice	54.94	54.94	110	Rice	54.94	54.94
9	Oklahoma	88.77	84.77	41	Louisville	75.84	73.34	73	Ohio	64.80	64.80	111	Eastern Michigan	54.74	54.74	111	Eastern Michigan	54.74	54.74
10	Notre Dame	86.16	84.16	42	Arizona State	73.17	73.17	74	Colorado	64.73	64.73	112	Southern Miss	61.74	54.74	112	Southern Miss	61.74	54.74
11	Texas A&M	86.23	83.73	43	West Virginia	72.34	72.84	75	Coastal Carolina	57.39	64.39	113	Louisiana Tech	60.07	54.07	113	Louisiana Tech	60.07	54.07
12	USC	83.71	83.71	44	Pittsburgh	73.92	72.42	76	Arizona	65.24	64.24	114	South Alabama	52.51	54.01	114	South Alabama	52.51	54.01
13	Michigan	83.60	83.10	45	Purdue	72.85	72.35	77	San Diego State	64.12	64.12	115	FIU	55.27	53.77	115	FIU	55.27	53.77
14	Miami (FL)	76.16	81.66	46	Northwestern	73.72	72.22	78	Wyoming	64.53	64.03	116	UTSA	49.66	53.16	116	UTSA	49.66	53.16
15	Iowa State	79.87	81.37	47	Kansas State	72.07	72.07	79	Air Force	64.74	63.24	117	Kansas	59.13	53.13	117	Kansas	59.13	53.13
16	North Carolina	81.71	81.21	48	Houston	71.01	72.01	80	Army	62.22	63.22	118	Texas State	49.20	52.70	118	Texas State	49.20	52.70
17	Virginia Tech	78.94	80.94	49	Marshall	62.12	71.62	81	Temple	63.46	62.46	119	UNLV	52.54	52.54	119	UNLV	52.54	52.54
18	Texas	84.24	80.74	50	Florida State	76.86	71.36	82	Fresno State	62.75	62.25	120	North Texas	54.76	52.26	120	North Texas	54.76	52.26
19	Oklahoma State	81.00	80.00	51	SMU	69.06	71.06	83	Liberty	55.20	61.70	121	Middle Tennessee	59.02	52.02	121	Middle Tennessee	59.02	52.02
20	Auburn	85.95	79.95	52	Arkansas	63.97	70.97	84	Colorado State	62.10	61.60	122	New Mexico	49.98	49.48	122	New Mexico	49.98	49.48
21	Utah	79.56	79.56	53	Mississippi State	69.67	70.67	85	Georgia Southern	63.00	61.50	123	UTEP	40.04	45.04	123	UTEP	40.04	45.04
22	LSU	87.88	79.38	54	Virginia	72.59	70.09	86	Maryland	61.98	61.48	124	Akron	43.46	43.46	124	Akron	43.46	43.46
22	BYU	70.88	79.38	55	Appalachian State	72.03	70.03	87	Arkansas State	60.16	61.16	125	Bowling Green	43.28	43.28	125	Bowling Green	43.28	43.28
24	Kentucky	78.24	79.24	56	Tulsa	64.97	69.97	88	Navy	70.10	61.10	126	UL-Monroe	51.86	42.86	126	UL-Monroe	51.86	42.86
25	Iowa	79.68	79.18	57	Wake Forest	66.46	69.96	89	Toledo	60.87	60.87	127	Massachusetts	36.36	34.86	127	Massachusetts	36.36	34.86
26	UCF	81.20	78.70	58	Missouri	69.95	69.95	90	Hawaii	60.86	60.86								
27	Washington	78.81	78.31	59	Boston College	68.90	69.90	91	Central Michigan	61.17	60.67								
28	Indiana	78.68	78.18	60	NC State	69.38	69.88	92	Troy	60.01	60.51								
29	Minnesota	78.17	78.17	61	Washington State	70.25	69.75	93	Western Michigan	60.41	60.41								
30	South Carolina	74.35	77.35	62	Texas Tech	72.54	68.54	94	Ball State	59.71	59.71								
31	Tennessee	78.63	76.63	63	Oregon State	68.53	68.53	95	Nevada	60.11	59.61								
32	Ole Miss	76.12	75.62	64	UAB	67.13	68.13	96	Utah State	59.25	59.25								

Week 8 Computer Projected Lines for Every CFB Game

For the past three seasons we have posted computer projected lines for every game. Games where there was of difference of more than 3 points saw our computer lines actually beat the Vegas line at a 302-252-12 (55%) clip the last three years. That's pretty solid and actually better than our own handicapping in some seasons. Last week's plays went 2-4 and now the record for this year is 23-15. Keep in mind, these computer lines don't take into consideration off-the-field factors like revenge or flat spots. They are basically a power-rating number difference between the two teams that also takes into consideration the home field advantage.

Of the 4 games where our computer is off more than 3 points compared to the Vegas line (highlighted), our favorite team this week to back would be **UAB -1**.

The Comp column is the computer projected line and the Diff column is the difference between the Vegas line and the Computer line. "+" numbers in the difference column say back the underdog. "-" numbers in the difference column say back the favorite. Let us know if you have questions.

Thursday, Oct 22nd	Line	Comp	Diff	Saturday, Oct 24th	Line	Comp	Diff
305 Arkansas State				355 West Virginia			
306 Appalachian St	-13	-11.1	+1.9	356 Texas Tech	+3.5	+2.3	+1.2
Friday, October 23rd	Line	Comp	Diff	357 Temple			
307 Tulsa				358 Memphis	-13.5	-15.4	-1.9
308 South Florida	+10.5	+10.6	-0.1	359 Kansas			
309 UL-Lafayette				360 Kansas State	-20	-21.4	-1.4
310 UAB	-1	-4.5	-3.5	361 South Carolina			
387 Illinois				362 LSU	-6	-5.0	+1.0
388 Wisconsin	-19	-21.7	-2.7	363 UL-Monroe			
397 Jacksonville State				364 South Alabama	-15	-12.4	+2.6
398 FIU	-10.5	-10.2	+0.3	365 Maryland			
Saturday, Oct 24th	Line	Comp	Diff	366 Northwestern	-11	-12.7	-1.7
311 Georgia Tech				367 Texas State			
312 Boston College	-3.5	-3.5	0.0	368 BYU	-28.5	-28.7	-0.2
313 Florida State				369 New Mexico			
314 Louisville	-5	-4.0	+1.0	370 Colorado State	PPD		
317 Notre Dame				371 Utah State			
318 Pittsburgh	+10.5	+9.5	+1.0	372 Boise State	-16.5	-17.6	-1.1
319 Alabama				373 Florida Atlantic			
320 Tennessee	+21	+19.3	+1.7	374 Marshall	-17	-15.3	+1.7
321 NC State				375 Hawaii			
322 North Carolina	-15.5	-13.1	+2.4	376 Fresno State	-4	-3.4	+0.6
323 Virginia Tech				377 UNLV			
324 Wake Forest	+9.5	+9.2	+0.3	378 San Diego State	-14.5	-13.3	+1.2
325 Syracuse				379 Air Force			
326 Clemson	-46	-48.0	-2.0	380 San Jose State	+7	+5.0	+2.0
327 Georgia Southern				381 Wyoming			
328 Coastal Carolina	-6.5	-3.9	+2.6	382 Nevada	+4.5	+2.4	+2.1
329 Virginia				383 Southern Miss			
330 Miami, FL	-12.5	-14.1	-1.6	384 Liberty	-11	-8.2	+2.8
331 Tulane				385 Michigan			
332 UCF	-19.5	-16.0	+3.5	386 Minnesota	+3	+2.9	+0.1
335 Houston				389 Georgia State			
336 Navy	+14	+8.2	+5.8	390 Troy	-2.5	-4.0	-1.5
337 Penn State				391 UTEP			
338 Indiana	+6.5	+5.7	+0.8	392 Charlotte	-14.5	-14.9	-0.4
339 Rutgers				393 Middle Tennessee			
340 Michigan State	-13.5	-11.3	+2.2	394 Rice	-3.5	-4.2	-0.7
341 Nebraska				395 Louisiana Tech			
342 Ohio State	-26	-26.2	-0.2	396 UTSA	+2	-0.3	+2.3
343 Iowa				403 Kentucky			
344 Purdue	+3	+5.1	-2.1	404 Missouri	+5.5	+7.3	-1.8
345 Baylor				399 Mercer			
346 Texas	-9	-8.4	+0.6	400 Army	-30.5	-29.2	+1.3
347 Cincinnati				401 Chattanooga			
348 SMU	-2.5	+0.7	+3.2	402 Western Kentucky	-14	-14.2	-0.2
349 Iowa State							
350 Oklahoma State	-3.5	-1.1	+2.4				
351 Oklahoma							
352 TCU	+6.5	+7.3	-0.8				
353 Auburn							
354 Ole Miss	+3	+2.3	+0.7				

Top 20 CFB ATS Trends for Week 8

1. UAB is on a 21-0 SU at home winning by 18 ppg and 15-4-2 ATS covering by 4.5 ppg. This week UAB is only a 1-point favorite hosting UL-Lafayette.
2. Pitt tends to play ND really tight as 10 of the last 12 meetings have been decided by 8 points or less. This week the Panthers are 10.5-point underdogs at home to ND.
3. The third Saturday in October has become tradition. It means an Alabama win and cover over Tennessee as the Tide are 13-0 SU (+25 ppg) and 9-4 ATS (+5 ppg) vs the Vols since Nick Saban took over 2007. This week Alabama is a 21-point favorite at Tennessee.
4. The underdog in the NC State/North Carolina series is on a 16-6 ATS run. This week NC State is a 17-point underdog, their largest underdog role in the series since 1996.
5. Clemson is a 46-point favorite vs Syracuse this week. It is the largest favorite role ever for Clemson vs a FBS team and the largest underdog role ever for Syracuse (previous high was +38 at Florida St in 2013).
6. Clemson is on a 22-0 SU (+36 ppg) and 19-3 ATS (+10 ppg) run vs ACC opponents.
7. Penn State is 22-1 SU vs Indiana since joining the Big Ten in 1993. The Nittany Lions are 6.5-point road favorites vs them this week.
8. Ohio State has owned Nebraska since the Huskers joined the Big Ten. The Buckeyes are 5-1 SU (+27.5 ppg) and 5-1 ATS (+15.8 ppg). This week the Buckeyes are 26-point favorites. It is the 2nd largest underdog role for Nebraska ever (+30 at Oklahoma in 2004).
9. Iowa is on a 21-0 SU (+17.6 ppg) and 17-3-1 ATS (+10.9 ppg) run as a road favorite since late 2011. This week the Hawkeyes are 3.5-point favorites at Purdue.
10. Michigan St is on a 2-13 ATS run (-9.6 ppg) at home the last couple of years. This week the Spartans are 13-point favorites vs Rutgers.
11. Iowa St is on a 19-7-2 ATS run (+6.6 ppg) as a dog. This week the Cyclones are 3.5-point underdogs at Oklahoma State.
12. TCU is now on a 6-15-1 ATS (-7 ppg) run at home the last 5 years. This week the Horned Frogs are 6.5-point home underdogs to Oklahoma.
13. Kansas St is on a 11-0 SU (+25.8 ppg) and 8-3 ATS (+10.7 ppg) run vs in-state rival Kansas. This week the Wildcats are 20-point home favorites vs the Jayhawks.
14. South Alabama is a 15-point favorite hosting UL-Monroe this week. However, the Jaguars are 2-10-1 ATS as a double-digit favorite all-time (since 2012) failing to cover by 6 ppg.
15. Northwestern is on a current 5-14 ATS run as a double-digit favorite (-4.6 ppg). This week the Wildcats are 11-point favorites hosting Maryland.
16. Michigan is on a 30-3 SU (+22 ppg) run in the "Little Brown Jug" series vs Minnesota since 1980 and are 22-11 ATS (+6.3 ppg).
17. Since late 2006, Michigan is 1-20 on the road vs ranked teams losing by an average of 15 ppg and 6-15 ATS failing to cover by 8 ppg. This week the Wolverines are 3-point favorite at No. 21 Minnesota.
18. Teams who are playing their first game of the season are 23-9-2 ATS this year against teams who have already played. This trend would fit San Jose St, Rice and Chattanooga who open up their season this week against teams that have already played.
19. Army is a 30.5-point favorite vs Mercer this week. The Black Knights are just 22-35-1 ATS (39%) as a double-digit favorite since 1980 and that numbers is 32% when increasing it to a 3-TD or more favorite.
20. Temple is 26-13-1 ATS as a road favorite since 2008 with an average cover of 5 ppg. This week the Owls are 13.5-point underdogs at Memphis.

4★ = BEST
3★ = BETTER
2★ = GOOD
1★ = FAIR

THE POWERS' PACK

2★ Carolina (+7.5) over New Orleans
2★ LAS VEGAS (+3) over Tampa Bay
2★ Kansas City/DENVER UNDER 46

Games in Rotation Order

HOME TEAM IN CAPS

Thursday, October 22nd

PHILADELPHIA 25 N.Y. Giants 20. The 5-18-1 record so far by the NFC East is the worst win percentage by any division through the first 6 weeks of the season since 1984. The Eagles are one of the most banged up teams in the NFL but still fought hard last week in a 2-point loss to Baltimore. They are 1-4-1, their worst start since 1998 and if they played in any other division in pretty much any other year in the history of the NFL, we would be writing them off, but they are only a 0.5-game back of the Cowboys. Meanwhile, the Giants are off their first win of the season, although it was by 1-point, at home, against a bad Washington team. NYG was out-gained 337-240 in the game! Philly is on a 11-1 run vs the G-Men but note the Giants are on a 13-2 ATS run as road dogs. Don't see much value here.

Sunday, October 25th

Cleveland 26 CINCINNATI 24. The Browns showed their true colors last week in a blowout loss to the Steelers. That's now twice they stepped up in competition on the road in division and twice they have been crushed. Baker Mayfield is not the long-term answer at QB but the Browns will win too many games this year to get a high draft pick. Meanwhile, Cincy blew a 21-0 lead last week in a 4-point loss to the Colts. Rookie QB Joe Burrow threw for 313 yards and connected 8 times with WR AJ Green. Cincy still covered the spread which is something they have done 10 of the last 12 times in this series including a back-door cover in Week 2. The Bengals cover again here.

WASHINGTON 24 Dallas 23. What was that? Last week we gave out Dallas on these pages and we weren't alone as the Cowboys went from 2.5-point underdogs to 1-point favorites. We will never apologize for beating an NFL market by 3.5 points as long-term we will win far more than we will lose. However, that was as bad as it gets for us on these pages as far as results with Dallas losing 38-10. The Cowboys are now 0-6 ATS on the year and there are rumors of player unrest. Meanwhile, Washington head coach Ron Rivera went for the win last week and came up short in a 1-point loss to the Giants. Despite poor records, both teams are in the race here in the division. We just can't bet on either team right now especially at this price. Pass.

ATLANTA 30 Detroit 28. Another embarrassing loser on these pages last week was fading 0-5 Atlanta as they woke up under interim coach Raheem Morris and crushed the Vikings 40-23. The defense picked off Kirk Cousins 3 times in the first half and QB Matt Ryan threw for 371 yards and 4 TD's. Detroit also had a good performance last week as off the bye they thumped the Jags with a 403-275 yard edge. Two teams famous for blowing leads and we can't trust either here. Pass.

2★ Carolina (plus the points) NEW ORLEANS 28 Carolina 23. Teddy Bridgewater returns to New Orleans where he was 5-0 SU and 5-0 ATS as a starter for the Saints last year. Last week the Panthers saw their 3-game win streak snapped vs the Bears as Teddy threw 2 picks and the Panthers also settled for FG's. We expect a bounce-back effort here. The Saints come in off a bye after a much-needed come-from-behind win over the Chargers. It was their biggest comeback win since 2009 but this team doesn't look as good as we anticipated in the preseason. Note new Carolina O.C. Joe Brady coached under Sean Payton. We like the dog here.

Buffalo 30 N.Y. Jets 16. This is the biggest road favorite role for the Bills since 1992! It is deserved not because we're overly impressed with Buffalo this season but because the Jets could be historically bad. After last week's 24-0 loss to the Dolphins, the Jets are now 0-6 SU getting outscored by 18.3 ppg and also 0-6 ATS failing to meet expectation by 11.1 ppg. How does head coach Adam Gase survive another week? Buffalo is on a short week after the disappointment vs KC but after back-to-back losses, they need to get right here. The Bills beat the Jets worse than the 10-point final in the opener as they had 31-15 first down and 404-254 yard edges.

Green Bay 31 HOUSTON 27. The Packers come in off their first loss of the season as they allowed the final 38 points to Tampa Bay, right after Rodgers' TD dance. Rodgers had by far his worst performance in ages as he was 16 of 35 for 160 yards and a 0-2 ratio. He should have a bounce back performance here vs a Houston defense that has allowed 70% completions and a 13-1 TD-to-INT ratio this year. Last week Houston fell in OT to Tennessee but they are playing better the last couple of weeks under interim coach Crennel. By the way, if the Texans make that 2-point conversion, the game is over, so we didn't have a problem with it considering their QB Watson threw for 335 yards and 4 TD's and certainly the offense looks better without O'Brien calling the plays. We don't see much value here. Pass.

Seattle 30 ARIZONA 28. Even though the Seahawks come in at 5-0 and off a bye, we feel they are one of the more overrated teams in the NFL. The Seahawks are 4-0 in games decided by one possession. They have been outgained in every single game this season and usually by some significant margin as they are -75 ypg. They have the worst defense in the NFL allowing 471 ypg which isn't good news going up against Kyler Murray and Company. They're taking on a confident Arizona team off their best performance of the season in a blowout win over Dallas on MNF, much to our dismay on these pages. The Cardinals usually play the Seahawks tough as they are 5-1-1 ATS the last 7 meetings.

New England 24 San Francisco 20. Yes, the Patriots are 2-3 on the season but one loss was at the goal-line in Seattle, another loss came at Kansas City without Cam Newton and then last week was the only stinker in a loss to Denver. They did hold the Broncos to ZERO TD's and Cam had his first 0-2 ratio game since 2017. They're catching a 49ers team feeling good about themselves after that upset win on SNF over the Rams which cashed on these pages. Jimmy G did throw for 3 TD's and will desperately want to beat his former team here. However, the look-ahead line on this game was New England -5.5. We don't think these teams moved 3.5-points after last week. Now add in the fact, New England hasn't lost 3 straight games since 2002 and when coming off back-to-back losses they are 9-0 SU (+20 ppg) and 7-2 ATS (+13.4 ppg) in that span.

2★ UNDER 46 Kansas City 26 DENVER 17. Both teams come in off big wins. First, Denver upset New England as 7-point dogs as their defense only gave up 12 points. Meanwhile, KC outgained Buffalo 466-206 in a 9-point win on MNF that should stop some concerns after the loss to the Raiders. The Chiefs are on a 9-0 SU and 7-1-1 ATS run in the series but we prefer the total here. In a season filled with a bunch of winning OVER tickets in the NFL, these two teams are a combined 7-4 to the UNDER. KC's defense is underrated because the offense always gets the headlines. Meanwhile, Denver's defense doesn't get enough credit as with an offense that doesn't help them out, they are only allowing 22 ppg. Add in the fact, the current forecast calls for 20 degrees and a half foot of snow and you get our top totals play of the week.

2★ LAS VEGAS 28 Tampa Bay 27. Really good SNF game here as the surprising Raiders come in off a bye after pulling a shocker over Kansas City two weeks ago as double-digit underdogs. Despite a really tough schedule, they are 3-2 on the season and QB Derek Carr has a 11-to-1 TD-to-INT ratio while completing 73% of his passes. Meanwhile, they're catching the Bucs off their best performance of the season as they scored the game's final 38 points in a win over previously unbeaten Green Bay. While Tom Brady gets the headlines, the Tampa Bay defense is now No. 1 in the NFL allowing 282 ypg. We like the spot here for the Raiders and Gruden should relish in the underdog role on primetime similar to an earlier upset over New Orleans.

L.A. CHARGERS 28 Jacksonville 21. Jacksonville is starting to show their true colors. After covering their first two games, the Jags are now on a 0-4 ATS slide failing to cover by 13 ppg and have been blown out multiple times including last week to Detroit. At 1-5, the race is on for Clemson QB Trevor Lawrence. Meanwhile, the Chargers come in off the bye after blowing a 17-point lead to the Saints a couple weeks ago. Laying points is never wise with Anthony Lynn as your head coach as the Chargers 3-9-2 ATS since late 2018, failing to cover by 3.8 ppg and have suffered 8 outright upset losses. They are banged up on offense including WR Keenan Allen. We are passing for now as we don't want either team.

Pittsburgh 26 TENNESSEE 25. As we're typing this up on Wednesday morning, some big money is showing on Tennessee in the market place as the line has moved to pick-em (down from Pittsburgh -2). Both teams enter 5-0 on the season. The Steelers come in off a big blowout win over the Cleveland Browns. They're off to their best start since the late 70s Super Bowl teams. Meanwhile, the Titans have been a surprise this year and a remarkable stat is that QB Ryan Tannehill has a 40-to-7 TD-to-INT ratio in his last 15 regular season starts. They have one of the best offenses in the NFL. However, we should note that Tennessee has been fortunate with 4 close wins including last week vs Houston in OT. Pittsburgh has the much better defense here and we lean with the road team.

Monday, October 26th

L.A. RAMS 25 Chicago 18. We think the Bears are a fraud at 5-1. They have been out-gained in each of their last 3 games and are -24 ypg on the season. Their offense has been held to under 270 yards in each of the last 3 weeks but they have managed to win 5 games this year all by a TD or less. Meanwhile, we're catching a Rams team hungry off an upset loss to the 49ers on SNF last week. We lean Rams and UNDER here as the two teams have had very low scoring games the last two years (17-7 LAR win last year and a 15-6 CHI two years ago).

Kansas St (SU: 3-1, ATS: 3-1, O/U: 2-2)

Table with columns: Date, Opponent, Line Score, ATS O/U. Rows include Arkansas State, Oklahoma, Texas Tech, TCU, Kansas, West Virginia, Oklahoma State, Iowa State, Baylor, Texas.

Kent State (SU: 0-0, ATS: 0-0, O/U: 0-0)

Table with columns: Date, Opponent, Line Score, ATS O/U. Rows include Eastern Michigan, Bowling Green, Akron, Buffalo, Miami (OH), Ohio.

Kentucky (SU: 2-2, ATS: 2-2, O/U: 1-3)

Table with columns: Date, Opponent, Line Score, ATS O/U. Rows include Auburn, Ole Miss, Mississippi State, Tennessee, Missouri, Georgia, Vanderbilt, Alabama, Florida, South Carolina.

Liberty (SU: 5-0, ATS: 3-2, O/U: 3-2)

Table with columns: Date, Opponent, Line Score, ATS O/U. Rows include WKU, FIU, North Alabama, UL-Monroe, Syracuse, Southern Miss, Virginia Tech, Western Carolina, NC State, Coastal Carolina.

Louisiana Tech (SU: 3-2, ATS: 2-3, O/U: 3-2)

Table with columns: Date, Opponent, Line Score, ATS O/U. Rows include Southern Miss, Houston Baptist, BYU, UTEP, Marshall, UAB, North Texas, Rice, UL-Monroe, FIU.

Louisville (SU: 1-4, ATS: 2-2, O/U: 3-2)

Table with columns: Date, Opponent, Line Score, ATS O/U. Rows include W. Kentucky, Miami (FL), Pittsburgh, Georgia Tech, Notre Dame, Florida State, Virginia Tech, Virginia, Syracuse, Boston College, Wake Forest.

LSU (SU: 1-2, ATS: 1-2, O/U: 2-1)

Table with columns: Date, Opponent, Line Score, ATS O/U. Rows include Mississippi State, Vanderbilt, Missouri, South Carolina, Auburn, Alabama, Texas A&M, Ole Miss, Florida, Marshall.

Marshall (SU: 4-0, ATS: 4-0, O/U: 3-1)

Table with columns: Date, Opponent, Line Score, ATS O/U. Rows include East. Kentucky, Appalachian St, South Carolina, Auburn, Alabama, Texas A&M, Ole Miss, Florida, Massachusetts, Middle Tennessee, Charlotte.

Maryland (SU: 0-0, ATS: 0-0, O/U: 0-0)

Table with columns: Date, Opponent, Line Score, ATS O/U. Rows include Northwestern, Minnesota, Penn State, Ohio State, Michigan State, Indiana, Michigan, Rutgers.

Massachusetts (SU: 0-1, ATS: 0-1, O/U: 0-1)

Table with columns: Date, Opponent, Line Score, ATS O/U. Row: Ga Southern.

Memphis (SU: 2-1, ATS: 1-2, O/U: 1-2)

Table with columns: Date, Opponent, Line Score, ATS O/U. Rows include Arkansas State, Marshall, Eastern Michigan, Bowling Green, Akron, Buffalo, Miami (OH), Ohio.

Miami, FL (SU: 4-1, ATS: 4-1, O/U: 3-2)

Table with columns: Date, Opponent, Line Score, ATS O/U. Rows include UAB, Louisville, Florida State, Clemson, Pittsburgh, Virginia, NC State, Virginia Tech, Georgia Tech, Wake Forest, North Carolina.

Miami, OH (SU: 0-0, ATS: 0-0, O/U: 0-0)

Table with columns: Date, Opponent, Line Score, ATS O/U. Rows include Ball State, Buffalo, Ohio, Akron, Kent State, Bowling Green, Michigan, Minnesota, Michigan State, Indiana, Wisconsin, Rutgers, Penn State, Maryland, Ohio State.

Michigan (SU: 0-0, ATS: 0-0, O/U: 0-0)

Table with columns: Date, Opponent, Line Score, ATS O/U. Rows include Minnesota, Michigan State, Indiana, Wisconsin, Rutgers, Penn State, Maryland, Ohio State, Michigan State, Rutgers, Michigan, Iowa, Indiana, Maryland, Northwestern, Ohio State, Penn State.

Michigan State (SU: 0-0, ATS: 0-0, O/U: 0-0)

Table with columns: Date, Opponent, Line Score, ATS O/U. Rows include Rutgers, Michigan, Iowa, Indiana, Maryland, Northwestern, Ohio State, Penn State.

Middle Tennessee (SU: 1-5, ATS: 3-3, O/U: 3-3)

Table with columns: Date, Opponent, Line Score, ATS O/U. Rows include Army, Troy, UTSA, West. Kentucky, FIU, North Texas, Rice, Charlotte, Marshall, Troy.

Minnesota (SU: 0-0, ATS: 0-0, O/U: 0-0)

Table with columns: Date, Opponent, Line Score, ATS O/U. Rows include Michigan, Maryland, Illinois, Iowa, Purdue, Wisconsin, Northwestern, Nebraska.

Mississippi St (SU: 1-3, ATS: 1-3, O/U: 1-3)

Table with columns: Date, Opponent, Line Score, ATS O/U. Rows include LSU, Arkansas, Kentucky, Texas A&M, Alabama, Vanderbilt, Auburn, Georgia, Ole Miss, Missouri.

Missouri (SU: 1-2, ATS: 2-1, O/U: 2-1)

Table with columns: Date, Opponent, Line Score, ATS O/U. Rows include Alabama, Tennessee, LSU, Kentucky, Florida, Georgia, South Carolina, Arkansas, Mississippi St, Vanderbilt.

Navy (SU: 3-2, ATS: 3-2, O/U: 3-1-1)

Table with columns: Date, Opponent, Line Score, ATS O/U. Rows include BYU, Tulane, Air Force, Temple, East Carolina, Houston, SMU, Tulsa, Memphis, USF.

NC State (SU: 4-1, ATS: 4-1, O/U: 4-1)

Table with columns: Date, Opponent, Line Score, ATS O/U. Rows include Wake Forest, Virginia Tech, Pittsburgh, Virginia, Duke, North Carolina, Miami (FL), Florida State, Liberty, Syracuse, Georgia Tech.

Nebraska (SU: 0-0, ATS: 0-0, O/U: 0-0)

Table with columns: Date, Opponent, Line Score, ATS O/U. Rows include Ohio State, Wisconsin, Northwestern, Penn State, Illinois, Iowa, Purdue, Minnesota, Wyoming, UNLV, Utah State, New Mexico, San Diego State, Hawaii, Fresno State, San Jose State.

New Mexico (SU: 0-0, ATS: 0-0, O/U: 0-0)

Table with columns: Date, Opponent, Line Score, ATS O/U. Rows include Colorado State, San Jose State, Nevada, Air Force, Utah State, Wyoming, Fresno State, North Carolina.

North Carolina (SU: 3-1, ATS: 2-2, O/U: 1-3)

Table with columns: Date, Opponent, Line Score, ATS O/U. Rows include Syracuse, Charlotte, Boston College, Michigan Tech, Florida State, NC State, Virginia, Duke, Wake Forest.

North Texas (SU: 2-3, ATS: 2-3, O/U: 4-1)

Table with columns: Date, Opponent, Line Score, ATS O/U. Rows include Houston Baptist, SMU, Houston, Southern Miss, Charlotte, Middle Tenn, UTEP, Louisiana Tech, UAB, Rice, Northern Illinois, Buffalo, Central Michigan, Akron, Miami (OH), Bowling Green, Buffalo, Kent State, Michigan State, Nebraska, Penn State, Rutgers, Maryland, Indiana, Illinois, Michigan, UTEP.

Oklahoma (SU: 2-2, ATS: 1-3, O/U: 3-1)

Table with columns: Date, Opponent, Line Score, ATS O/U. Rows include Missouri State, Kansas State, Iowa State, Texas-40t, TCU, Texas Tech, Kansas, Oklahoma State, West Virginia, Baylor, Tulsa, West Virginia, Kansas, Iowa State, Texas, Kansas State, Oklahoma, Texas Tech, TCU, Baylor.

Ole Miss (SU: 1-3, ATS: 2-2, O/U: 3-1)

Table with columns: Date, Opponent, Line Score, ATS O/U. Rows include Florida, Kentucky, Alabama, Arkansas, Auburn, Vanderbilt, South Carolina, Texas A&M, Mississippi State, LSU.

North Texas (SU: 2-3, ATS: 2-3, O/U: 4-1)

Table with columns: Date, Opponent, Line Score, ATS O/U. Rows include Houston Baptist, SMU, Houston, Southern Miss, Charlotte, Middle Tenn, UTEP, Louisiana Tech, UAB, Rice, UTSA.

Northern Illinois (SU: 0-0, ATS: 0-0, O/U: 0-0)

Table with columns: Date, Opponent, Line Score, ATS O/U. Rows include Buffalo, Central Michigan, Ball State, Western Michigan, Toledo, Eastern Michigan.

Northwestern (SU: 0-0, ATS: 0-0, O/U: 0-0)

Table with columns: Date, Opponent, Line Score, ATS O/U. Rows include Maryland, Iowa, Nebraska, Purdue, Wisconsin, Michigan State, Minnesota, Illinois.

Notre Dame (SU: 4-0, ATS: 1-3, O/U: 2-2)

Table with columns: Date, Opponent, Line Score, ATS O/U. Rows include Duke, USF, Florida State, Louisville, Pittsburgh, Georgia Tech, Clemson, Boston College, North Carolina, Syracuse, Wake Forest.

Ohio (SU: 0-0, ATS: 0-0, O/U: 0-0)

Table with columns: Date, Opponent, Line Score, ATS O/U. Rows include Central Michigan, Akron, Miami (OH), Bowling Green, Buffalo, Kent State, Michigan State, Nebraska, Penn State, Rutgers, Maryland, Indiana, Illinois, Michigan, UTEP.

Ohio State (SU: 0-0, ATS: 0-0, O/U: 0-0)

Table with columns: Date, Opponent, Line Score, ATS O/U. Rows include Nebraska, Penn State, Rutgers, Maryland, Indiana, Illinois, Michigan, UTEP, Michigan State, Indiana, Illinois, Michigan, UTEP.

Oklahoma (SU: 2-2, ATS: 1-3, O/U: 3-1)

Table with columns: Date, Opponent, Line Score, ATS O/U. Rows include Missouri State, Kansas State, Iowa State, Texas-40t, TCU, Texas Tech, Kansas, Oklahoma State, West Virginia, Baylor, Tulsa, West Virginia, Kansas, Iowa State, Texas, Kansas State, Oklahoma, Texas Tech, TCU, Baylor.

Oklahoma St (SU: 3-0, ATS: 2-1, O/U: 1-2)

Table with columns: Date, Opponent, Line Score, ATS O/U. Rows include Tulsa, West Virginia, Kansas, Iowa State, Texas, Kansas State, Oklahoma, Texas Tech, TCU, Baylor, Florida, Kentucky, Alabama, Arkansas, Auburn, Vanderbilt, South Carolina, Texas A&M, Mississippi State, LSU.

Ole Miss (SU: 1-3, ATS: 2-2, O/U: 3-1)

Table with columns: Date, Opponent, Line Score, ATS O/U. Rows include Florida, Kentucky, Alabama, Arkansas, Auburn, Vanderbilt, South Carolina, Texas A&M, Mississippi State, LSU.

Oregon (SU: 0-0, ATS: 0-0, O/U: 0-0)

Table with columns: Date, Opponent, Line Score, ATS O/U. Rows include Stanford, Washington State, UCLA, Oregon State, California, Washington.

Oregon State (SU: 0-0, ATS: 0-0, O/U: 0-0)

Table with columns: Date, Opponent, Line Score, ATS O/U. Rows include Washington State, Washington, California, Oregon, Utah, Stanford.

Penn State (SU: 0-0, ATS: 0-0, O/U: 0-0)

Table with columns: Date, Opponent, Line Score, ATS O/U. Rows include Indiana, Ohio State, Maryland, Nebraska, Michigan, Rutgers, Michigan State.

Pittsburgh (SU: 3-3, ATS: 0-4-1, O/U: 3-2)

Table with columns: Date, Opponent, Line Score, ATS O/U. Rows include Austin Peay, Syracuse, Louisville, NC State, Boston Coll, Miami (FL), Notre Dame, Florida State, Georgia Tech, Virginia Tech, Clemson.

Purdue (SU: 0-0, ATS: 0-0, O/U: 0-0)

Table with columns: Date, Opponent, Line Score, ATS O/U. Rows include Iowa, Illinois, Wisconsin, Northwestern, Minnesota, Rutgers, Nebraska, Indiana.

Rice (SU: 0-0, ATS: 0-0, O/U: 0-0)

Table with columns: Date, Opponent, Line Score, ATS O/U. Rows include Marshall, UAB, Middle Tennessee, Southern Miss, UTSA, Louisiana Tech, North Texas, UTEP.

Rutgers (SU: 0-0, ATS: 0-0, O/U: 0-0)

Table with columns: Date, Opponent, Line Score, ATS O/U. Rows include Michigan State, Indiana, Ohio State, Illinois, Michigan, Purdue, Penn State, Maryland.

San Diego State (SU: 0-0, ATS: 0-0, O/U: 0-0)

Table with columns: Date, Opponent, Line Score, ATS O/U. Rows include UNLV, Utah State, San Jose State, Hawaii, Nevada, Fresno State, Colorado State, BYU.

San Jose State (SU: 0-0, ATS: 0-0, O/U: 0-0)

Table with columns: Date, Opponent, Line Score, ATS O/U. Rows include Air Force, New Mexico, San Diego State, UNLV, Fresno State, Boise State, Hawaii, Nevada.

SMU (SU: 5-0, ATS: 3-2, O/U: 3-2)

Table with columns: Date, Opponent, Line Score, ATS O/U. Rows include Texas State, North Texas, Stephen F. Austin, Memphis, Tulane, Cincinnati, Navy, Temple, Tulsa, Houston, East Carolina.

South Alabama (SU: 2-2, ATS: 3-1, O/U: 1-3)

Table with columns: Date, Opponent, Line Score, ATS/O/U. Rows include games against Southern Miss, Tulane, UAB, Texas State, UL-Monroe, Georgia Southern, Coastal Carolina, UL-Lafayette, Georgia State, Arkansas State, Troy, and South Carolina.

South Carolina (SU: 2-2, ATS: 3-0-1, O/U: 3-1)

Table with columns: Date, Opponent, Line Score, ATS/O/U. Rows include games against Tennessee, Florida, Vanderbilt, Auburn, LSU, Texas A&M, Ole Miss, Missouri, Georgia, and Kentucky.

Southern Miss (SU: 1-3, ATS: 1-3, O/U: 2-2)

Table with columns: Date, Opponent, Line Score, ATS/O/U. Rows include games against South Alabama, Louisiana Tech, Tulane, North Texas, Florida Atlantic, UTEP, Liberty, Rice, North Alabama, Western Kentucky, UTSA, and UAB.

Stanford (SU: 0-0, ATS: 0-0, O/U: 0-0)

Table with columns: Date, Opponent, Line Score, ATS/O/U. Rows include games against Oregon, Colorado, Washington State, California, Washington, Oregon State, and Syracuse.

Syracuse (SU: 1-4, ATS: 2-3, O/U: 3-2)

Table with columns: Date, Opponent, Line Score, ATS/O/U. Rows include games against North Carolina, Pittsburgh, Georgia Tech, Duke, Liberty, Clemson, Wake Forest, Boston College, Louisville, NC State, and Notre Dame.

TGU (SU: 1-2, ATS: 2-1, O/U: 2-1)

Table with columns: Date, Opponent, Line Score, ATS/O/U. Rows include games against Iowa State, Texas, Kansas State, Oklahoma, Baylor, Texas Tech, West Virginia, Kansas, and Oklahoma State.

Temple (SU: 1-1, ATS: 0-2, O/U: 2-0)

Table with columns: Date, Opponent, Line Score, ATS/O/U. Rows include games against Navy, USF, Memphis, Tulane, SMU, UCF, East Carolina, East Carolina, and Cincinnati.

Tennessee (SU: 2-2, ATS: 1-2-1, O/U: 2-2)

Table with columns: Date, Opponent, Line Score, ATS/O/U. Rows include games against South Carolina, Missouri, Georgia, Kentucky, Alabama, Arkansas, Texas A&M, Auburn, Vanderbilt, and Florida.

Texas (SU: 2-2, ATS: 1-3, O/U: 4-0)

Table with columns: Date, Opponent, Line Score, ATS/O/U. Rows include games against UTEP, Texas Tech, TCU, Oklahoma, Baylor, Oklahoma State, West Virginia, Kansas, Iowa State, and Kansas State.

Texas A&M (SU: 3-1, ATS: 2-2, O/U: 2-2)

Table with columns: Date, Opponent, Line Score, ATS/O/U. Rows include games against Vanderbilt, Alabama, Florida, Mississippi St., Arkansas, South Carolina, Tennessee, Ole Miss, and LSU.

Texas St (SU: 1-5, ATS: 3-3, O/U: 1-5)

Table with columns: Date, Opponent, Line Score, ATS/O/U. Rows include games against SMU, UTSA, UL-Monroe, Boston College, Troy, South Alabama, BYU, UL-Lafayette, Appalachian State, Georgia Southern, Arkansas State, and Coastal Carolina.

Texas Tech (SU: 1-3, ATS: 1-3, O/U: 1-3)

Table with columns: Date, Opponent, Line Score, ATS/O/U. Rows include games against Houston Baptist, Texas, Kansas State, Iowa State, West Virginia, Oklahoma, TCU, Baylor, Oklahoma State, and Kansas.

Toledo (SU: 0-0, ATS: 0-0, O/U: 0-0)

Table with columns: Date, Opponent, Line Score, ATS/O/U. Rows include games against Bowling Green, Western Michigan, Eastern Michigan, Ball State, Northern Illinois, and Central Michigan.

Troy (SU: 3-1, ATS: 2-2, O/U: 0-3-1)

Table with columns: Date, Opponent, Line Score, ATS/O/U. Rows include games against Middle Tenn, BYU, Texas State, Eastern Kentucky, Georgia State, Arkansas State, Georgia Southern, Coastal Carolina, Middle Tennessee, Appalachian State, and UL-Monroe.

Tulane (SU: 2-3, ATS: 2-3, O/U: 4-1)

Table with columns: Date, Opponent, Line Score, ATS/O/U. Rows include games against South Alabama, Navy, Southern Miss, Houston, SMU, UCF, Temple, East Carolina, Army, Tulsa, Memphis, and Tulsa.

Tulsa (SU: 1-1, ATS: 2-0, O/U: 0-2)

Table with columns: Date, Opponent, Line Score, ATS/O/U. Rows include games against Oklahoma St., Arkansas State, UCF, USC, East Carolina, SMU, Tulane, and Houston.

UAB (SU: 4-1, ATS: 2-3, O/U: 3-2)

Table with columns: Date, Opponent, Line Score, ATS/O/U. Rows include games against Central Arkansas, Miami, South Alabama, UTSA, Western Kentucky, UL-Lafayette, and Louisiana Tech.

UCF (SU: 2-2, ATS: 1-3, O/U: 3-1)

Table with columns: Date, Opponent, Line Score, ATS/O/U. Rows include games against Georgia Tech, East Carolina, Tulsa, Memphis, Tulane, Houston, Temple, Cincinnati, and USC.

UCLA (SU: 0-0, ATS: 0-0, O/U: 0-0)

Table with columns: Date, Opponent, Line Score, ATS/O/U. Rows include games against Colorado, Utah, Oregon, Arizona, and USC.

UL-Lafayette (SU: 3-1, ATS: 1-3, O/U: 1-3)

Table with columns: Date, Opponent, Line Score, ATS/O/U. Rows include games against Iowa State, Georgia St., Georgia Southern, Coastal Carolina, South Alabama, Texas State, South Alabama, Central Arkansas, and UL-Monroe.

UL-Monroe (SU: 0-5, ATS: 1-4, O/U: 1-4)

Table with columns: Date, Opponent, Line Score, ATS/O/U. Rows include games against Army, Texas State, UTEP, Georgia Southern, and Liberty.

UNLV (SU: 0-0, ATS: 0-0, O/U: 0-0)

Table with columns: Date, Opponent, Line Score, ATS/O/U. Rows include games against San Diego State, Nevada, Fresno State, San Jose State, Colorado State, Wyoming, Boise State, and Hawaii.

USC (SU: 0-0, ATS: 0-0, O/U: 0-0)

Table with columns: Date, Opponent, Line Score, ATS/O/U. Rows include games against Arizona State, Arizona, Utah, Colorado, Washington State, UCLA, and Virginia Tech.

USF (SU: 1-4, ATS: 3-2, O/U: 3-2)

Table with columns: Date, Opponent, Line Score, ATS/O/U. Rows include games against The Citadel, Notre Dame, Florida Atlantic, Cincinnati, East Carolina, Temple, Tulsa, Memphis, and Houston.

Utah (SU: 0-0, ATS: 0-0, O/U: 0-0)

Table with columns: Date, Opponent, Line Score, ATS/O/U. Rows include games against Arizona, UCLA, USC, Arizona State, Oregon State, and Colorado.

Utah State (SU: 0-0, ATS: 0-0, O/U: 0-0)

Table with columns: Date, Opponent, Line Score, ATS/O/U. Rows include games against Boise State, San Diego State, Nevada, Fresno State, Wyoming, New Mexico, Air Force, and Colorado State.

UTEP (SU: 3-2, ATS: 3-2, O/U: 1-4)

Table with columns: Date, Opponent, Line Score, ATS/O/U. Rows include games against Steph. F. Austin, Texas, Abilene Christian, UL-Monroe, Louisiana Tech, Southern Miss, Charlotte, North Texas, FIU, UTSA, UAB, and Rice.

UTSA (SU: 3-3, ATS: 3-3, O/U: 2-4)

Table with columns: Date, Opponent, Line Score, ATS/O/U. Rows include games against Texas St., Stephen F. Austin, Middle Tennessee, UAB, BYU, Army, Louisiana Tech, Florida Atlantic, Rice, UTEP, North Texas, and Vanderbilt.

Vanderbilt (SU: 0-3, ATS: 1-2, O/U: 1-2)

Table with columns: Date, Opponent, Line Score, ATS/O/U. Rows include games against Texas A&M, LSU, South Carolina, Ole Miss, Mississippi State, Kentucky, Florida, Tennessee, and Georgia.

Virginia (SU: 1-3, ATS: 2-2, O/U: 4-0)

Table with columns: Date, Opponent, Line Score, ATS/O/U. Rows include games against Duke, Clemson, NC State, Wake Forest, Miami (FL), North Carolina, Louisville, Abilene Christian, Florida State, Boston College, and Virginia Tech.

Virginia Tech (SU: 3-1, ATS: 2-2, O/U: 3-1)

Table with columns: Date, Opponent, Line Score, ATS/O/U. Rows include games against NC State, Duke, North Carolina, Boston College, Wake Forest, Louisville, Liberty, Miami (FL), and Pittsburgh.

Wake Forest (SU: 2-2, ATS: 3-1, O/U: 3-1)

Table with columns: Date, Opponent, Line Score, ATS/O/U. Rows include games against Clemson, NC State, Campbell, Virginia, Virginia Tech, Syracuse, North Carolina, Duke, Miami (FL), Louisville, and Notre Dame.

Washington (SU: 0-0, ATS: 0-0, O/U: 0-0)

Table with columns: Date, Opponent, Line Score, ATS/O/U. Rows include games against California, Oregon State, Arizona, Washington State, Stanford, and Oregon.

Washington St (SU: 0-0, ATS: 0-0, O/U: 0-0)

Table with columns: Date, Opponent, Line Score, ATS/O/U. Rows include games against Oregon State, Oregon, Stanford, Washington, USC, California, and West Virginia.

West Virginia (SU: 3-1, ATS: 2-1-1, O/U: 2-2)

Table with columns: Date, Opponent, Line Score, ATS/O/U. Rows include games against East. Kentucky, Oklahoma St., Baylor, Kansas, Texas Tech, Kansas State, Texas, TCU, Oklahoma, and Iowa State.

WKU (SU: 1-4, ATS: 0-5, O/U: 4-1)

Table with columns: Date, Opponent, Line Score, ATS/O/U. Rows include games against Louisville, Liberty, Middle Tenn, Marshall, UAB, Chattanooga, and BYU.

Western Michigan (SU: 0-0, ATS: 0-0, O/U: 0-0)

Table with columns: Date, Opponent, Line Score, ATS/O/U. Rows include games against Akron, Toledo, Central Michigan, Northern Illinois, Eastern Michigan, Ball State, and Wisconsin.

Wisconsin (SU: 0-0, ATS: 0-0, O/U: 0-0)

Table with columns: Date, Opponent, Line Score, ATS/O/U. Rows include games against Illinois, Nebraska, Purdue, Michigan, Northwestern, Minnesota, Indiana, and Iowa.

Wyoming (SU: 0-0, ATS: 0-0, O/U: 0-0)

Table with columns: Date, Opponent, Line Score, ATS/O/U. Rows include games against Nevada, Hawaii, Colorado State, Air Force, Utah State, UNLV, New Mexico, and Boise State.