

How You Can Help

During the coming two years we must raise \$500,000 in contributions in order to achieve our objectives.

The support of people like you—citizens convinced of the need for more environmental and ecological education, and willing to back up their beliefs with a cash donation—is vital to our enterprise. Let our staff prove what it can do in extending the Center's formal educational services, enhancing their quality and novelty, providing improved recreational facilities, and presenting a more attractive aspect to visitors.

All this can and will be done, not simply for strangers coming to the Center but for you and your family when you come to share experiences here with friends. Your part in this enterprise can be both an important contribution to the improvement of man's relationship to nature and a source of deep personal satisfaction in years to come.

Sincerely yours,

Dr. Howard Irwin

Dr. Howard Irwin, President
Weis Ecology Center

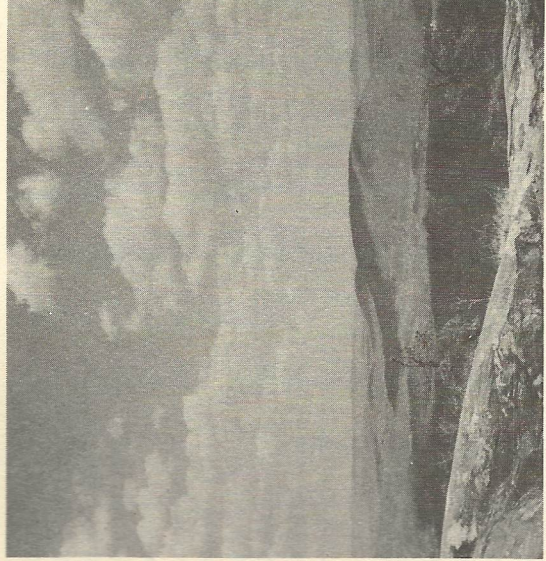


WEIS ECOLOGY CENTER

150 Snake Den Road
Ringwood, New Jersey 07456

Where Man and Nature Meet
"Whenever we try to pick out anything by
itself, we find it hitched up to everything
else in the Universe..."

— John Muir



View from Wyankie High Point (above Weis Center) toward Windbeam Mountain: a land rich in scenery and ecological interest.

Please mail to: Dr. Howard Irwin, Weis Ecology Center Fund Drive, 150 Snake Den Road, Ringwood, New Jersey 07456

Telephone

Address

Name

6 months 12 months 18 months 24 months
All donations are tax deductible

Pledges may be paid over a two year period. Please indicate your preference:

Benefactor \$1,000 Patron
 Donor 500 Friend
 Contributor \$100 In memory of
..... (please fill in amount) In tribute to

Yes, I would like to help as—

THE WEIS ECOLOGY CENTER FUND

An Open Letter to Our Friends

How do our lives—yours and mine—affect the natural world around us? How great is the gap between what we are doing and what we must do if the natural world, with its rich diversity and delicate balances, is to survive? How can man come to a better understanding of his responsibilities as the most powerful of the tenants of this fragile planet?

These questions are immense in scope and complexity, but they must be faced. It is the aim of the Weis Ecology Center to face these questions regionally and locally, and—so we hope—to help thousands of concerned citizens to find the answers and to begin translating these answers into practical achievement.

If such objectives appeal to you, please read on.

In the Right Place

The Weis Ecology Center is, as you know, dedicated to environmental and ecological education. Located near the Wanauque Reservoir in the north-central New Jersey Highlands, it is near some of the most extensive wilderness in the state, including Ringwood State Park and the Hewitt and Norvin Green State Forests. Remarkably, these large natural areas are readily accessible (within 35 miles) from such nearby cities as Paterson and Passaic and also the vast New York-Jersey City-Newark population complex.

More than half of northern Passaic County is forested, and this land with its rich Colonial history and its geological and zoological diversity also contains more major plant community types than any other natural area in the state. It would be difficult to find a more convenient and more stimulating site for educational and recreational programs focused on man's relationship to nature.

In a recent master plan development study by the Nature Center Planning Division of the National Audubon Society, continued development of the Weis Ecology Center was considered to be a highly feasible and potentially unique venture into environmental education and nature activities.

With the Right People

The governing Corporation of the Weis Ecology Center consists of 30 persons, 27 of whom are volunteers—scientists, educators, lawyers, business people, cultural leaders. They give of their time freely. Read what some of them have to say about the Center:

"Only with a true, whole-world understanding and effective communication of the truth of our dependence on that whole world can we foment a new dream, a new revolution of humane and appropriate expectations. It is in this context that the Weis Ecology Center has come into being and picks up the tools to do its work."

— Dr. Howard Irwin, President
Weis Ecology Center

"Simply stated our objectives are to channel carefully planned educational programs to help people understand the many problems of the human environment and to help safeguard the well being of humanity."

— May H. Weis
Founder and Honorary Chairman, Weis Ecology Center



A wide variety of botanical specimens, such as the bloodroot, are among the attractions of the wilderness surrounding the Center.

Such are the people who believe in the Center's future as an educational force, and who are determined to make that future rich in achievement.

With the Right Programs

In the past, the Weis Ecology Center has conducted a number of environmental and ecological programs for high school, college, university, and community groups. Encouraged by these beginnings, the Center plans to expand its efforts and offer a wider range of educational activities to surrounding towns.

Among the offerings of the Center will be self-guiding nature trails and courses of instruction in such topics as nature interpretation for naturalists, natural-resource inventories, wilderness survival, low-impact camping, use of wild plants as food, and the dyeing of natural fabrics. Imaginative but practical programs based on the local environment, but with far-reaching implications, are the goal.

And with the Right Facilities

But what we can do is limited by our facilities—and staff. Briefly, we must—

- Enlarge and renovate our education building, providing improved insulation, plumbing and heating as well as more adequate classrooms, overnight facilities, lavatories, and kitchen.

- Build a new dormitory.
- Obtain suitable office supplies and furniture, typewriters, duplicating machines, projectors, viewing screens, blackboards, bookcases, library materials, and other needs.
- Build or resurface roadways and parking areas.
- Build or upgrade cabins and recreational facilities.
- Enlarge and renovate our visitor center
- Provide funds for increased personnel including staff naturalists and visiting lecturers