

**Night Dive Charter:  
Friday June 30th  
Hyde**

Come join us for an amazing night wreck dive off the North Carolina Coast.

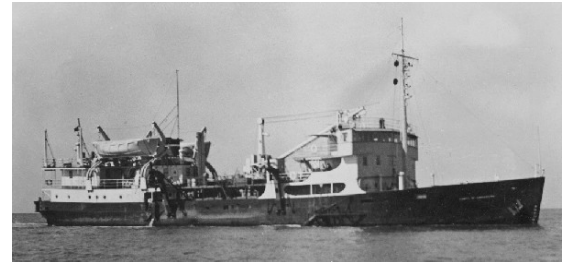


When: Friday July 1st

We will be meeting 5:00 pm at the Wilmington Marina located at 1414 Airline Road, Wilmington. Boat departs at 5:30 pm.

Dive Site: Hyde

Hyde - It was built in 1945 in Wilmington Delaware and saw service in Atlantic, Pacific and Honolulu. Its primary function was to keep waterways open for Naval ship traffic. Because the Hyde was constructed during WWII it was one of a few dredges outfitted with guns, armor, and a gun crew. Today the Hyde sits upright in 85ft of water 18 miles from Masonboro inlet. It was sunk by NC Division of Marine Fisheries in 1988. The deck is around 65-70 ft which makes this a good dive for a novice diver wanting a little more experience.



This is a 2 tank trip. We will do the first dive around 7:00 pm so divers can see the entire dive site. Our 2<sup>nd</sup> tank will be a night dive.

Cost:

Cost: \$99 per diver

For Divers who want to earn their Night Diver Specialty Certification on this trip.



Call us at 919-341-2787 or stop in the shop to reserve your spot.



**Night Dive Charter:  
Friday June 30th  
Hyde**

## Frequently Asked Questions

Cancellation Policy: Carolina Dive Centers full cancellation policy is located on our website trip page at [www.carolinadivecenter.com](http://www.carolinadivecenter.com) If Carolina Dive Center cancels the trip you will be given a full refund. We cannot guarantee the clarity of the water or sea conditions. Our boat captain will always attempt to get you to where you want to go, but the safety of our passengers and the vessel is always the foremost consideration. If it is not possible to get you to the primary site, it is usually possible to get you to an alternate site. In that case you will only be charged for the trip that was actually run, cancellation is not an option.

*Up to 14 days prior to departure: Full refund. 14 days prior to departure: Full payment of trip fee is due. Inside 14 days prior to departure: Dive charter is NOT refundable. However, we will attempt to rebook your reservation with another diver. If we are able to rebook your spot on the charter, you will not be charged.*

### Dive Boat – Aquatic Safaris I

The Aquatic Safaris I is a custom built 48' Island Hopper dive boat (not a converted fishing vessel) that has a wide beam, making it a stable dive platform. Twin diesels with 1080HP ensures a quick comfortable ride to and from the dive site. She cruises fully loaded ~23-25 knots! Custom fins-optional ladders with extra wide steps make exiting from the water easier than ever!!

### Directions to Marina:

Take I-40 East to Wilmington I-40 turns into N College Rd/NC-132 S/US-117 S .  
Take exit 8 for US-74/US-17 toward Wilmington (0.2 miles). Turn right at US-17-BR (0.4 mi).  
Turn right at Eastwood Rd/US-74, continue to follow US-74 (3.6 mi). Turn right at Airlie Rd  
Boat is located at 1414 Airlie Road (first parking lot on Airlie road).

### Hotel Accommodations:

Here are two hotels that provide a discount for divers. When Booking tell them you are diving with

|                                                                                       |                                                                                                   |
|---------------------------------------------------------------------------------------|---------------------------------------------------------------------------------------------------|
| Comfort Inn<br>151 South College Rd.<br>Wilmington, NC 28403<br>Phone: (910) 791-4841 | Suburban Extended Stay Hotel<br>245 Eastwood Rd.<br>Wilmington, NC 28403<br>Phone: (910) 793-1920 |
|---------------------------------------------------------------------------------------|---------------------------------------------------------------------------------------------------|

Call us at 919-341-2787 or stop in the shop to reserve your spot.