



Fargo-Moorhead, ND Chapter #246

The Prairie Rose



*As material for the
construction of our
building, I pledge
the agility of
my hands, the
ability of my mind,
and the integrity
of my heart.*

April 2014

Message From FM #246

Networking vs. Network!

Network - A group or system of interconnected people or things.

Networking - The exchange of information or services among individuals, groups or institutions; specifically: the cultivation of productive relationships for employment or business.

We list "networking" as a benefit and/or value of being a NAWIC member. Is it the networking or should we be using "building a network" of women to exchange information and services that meet our core purpose "To enhance the success of women in the construction industry".

By meeting the Membership/PR & Marketing challenge to identify which aspects of the construction industry we already have in our chapters and then seek out memberships to fill where we have vacancies - we are building our network base. A way to find these members is by both using the old standards (mail, phone, news) while also using new technology (Facebook, Twitter, email, etc.) to introduce companies to NAWIC. If we are open to using all forms of media outlets to connect with the public we have a better chance to "build our network" thus growing NAWIC back to the membership levels we have had.

Fargo-Moorhead has a variety of programs planned through September - please check them out and join us.

For more details about our upcoming programs go to:

www.nawicfm246.org

Or for more information about NAWIC as a whole go to:

www.nawic.org

We look forward to meeting you soon!!

Fargo-Moorhead, ND
Chapter #246

PO Box 763

Fargo, ND 58107-0763

nawicfm246@gmail.com

Website

www.nawicfm246.org

Chartered - June 3, 1978

Find us on

facebook

In This Issue

Message From FM246	1
Calendar/Upcoming Events	2
Program Notice	3
Meeting Agenda	4
Meeting Minutes	5
Chapter Member Info	6
Regional & National Info	6
Committee Reports	7-9
NEF Information	10
Chapter Sales	11
Construction Education	12
Chapter Builds Challenge	13
May Program Notice	14



Sun	Mon	Tue	Wed	Thu	Fri	Sat
		1 April Fool's Day!	2	3	4	5
6	7	8	9	10 FM 246 Membership Meeting	11	12
13	14	15	16	17 R13 Conf Call 11 AM CT	18	19
20 Happy Easter	21	22 earth Day	23	24	25 Monthly reports due to Director	26
27	28	29	30			

Upcoming 2014 Events

ANNUAL FORUM

SAVE THE DATE

Start making plans to attend Forum 2014 in the Quad Cities (Moline/Rock Island, IL and Davenport/Bettendorf, IA)

Radisson Quad City Plaza Hotel
Davenport Iowa.

Watch for future updates & details!!

MAY 1-3, 2014
Quad Cities, IL

ANNUAL MEETING & EDUCATIONAL CONFERENCE (AMEC)

SAVE THE DATE

59th Annual Meeting

Watch for monthly emails about all the things to do & see in Indianapolis when you aren't in the many seminars & workshops that will be available to enhance your career in the construction industry!!

SEPTEMBER 3 - 6, 2014
INDIANAPOLIS, IN

ANNUAL PLANNING CONFERENCE

SAVE THE DATE

Start making plans to attend Region 13's 2014 Annual Planning Conference (APC).

Downtown Milwaukee.

Watch for future updates & details!!

October 10-11, 2014
Milwaukee, WI



Fargo-Moorhead, ND Chapter #246

Monthly Program Notice

Thursday, April 10, 2014

Holiday Inn (Club I) I-29 & 13th Ave. - Fargo, ND

Social Hour	5:30 pm
Dinner	6:00 pm
<i>(Order from menu - paid by individuals)</i>	
Meeting	6:30 pm

Program	6:45 pm
----------------	---------

“Cleaning Green”

Presented by: Bethany Grahn
Owner - Clean & Green Cleaning Service, LLC

Join us as we learn about the benefits of cleaning your home using “green” products and tools. Discover how cleaning with environmentally friendly products can actually be better, faster, cheaper, and healthier for you and your household, while leaving you with a sparkling clean home! Bethany Grahn, owner of Clean & Green Cleaning Service will also share cleaning tips and favorite commercially produced products, as well as recipes to make your own non-toxic cleaners.

RSVP by <u>April 7, 2014</u> to:	Amy Berg
by phone:	218-234-6633
or email:	aberg.nawic@yahoo.com

National Association of Women in Construction



Fargo-Moorhead, ND Chapter #246

Membership Meeting Agenda

Holiday Inn, Fargo, ND

April 10, 2014

CALL TO ORDER: _____ PM

NAWIC PLEDGE: As material for the construction of our building,
I pledge the agility of my hands, the ability of my mind
and the Integrity of my heart.

INTRODUCTIONS:

SECRETARY'S REPORT: February (printed in Newsletter) *(no regular meeting held in March)*

CORRESPONDENCE: INCOMING: Passed
OUTGOING: Mail -
Email - CDD projects for judging;
Meeting Notice, Newsletter & reports to Director

REPORT OF OFFICERS:
Treasurer's Report
Reports of Other Officers

COMMITTEE REPORTS: Printed in Newsletter

UNFINISHED BUSINESS: Forum - May 1-3rd

NEW BUSINESS: Election of Nominating Committee
Board Recommendations

PROGRAM: **"Cleaning Green"** presented by Bethany Grahm

ANNOUNCEMENTS:

Monthly Membership Recognition Month **February/March** Amy

Chapter _____ Total _____

Construction Word Meaning _____

Safety - _____

Next Month - May - Date & Topic - TBD
June 12 - Tour of **"DIY Wood Studio"**

ADJOURNMENT: _____ PM



National Association of Women in Construction

Fargo-Moorhead, ND Chapter #246

Membership Meeting Action Minutes

Holiday Inn, Fargo, ND

February 13, 2014

CALL TO ORDER: The meeting was called to order at 6:20 pm by President Dawn Wiedewitsch

INTRODUCTIONS: Members present: Dawn Wiedewitsch, Amy Berg and two guests: Angie Boisjolie & Jennifer Davis.
There being 2 of 3 voting members in attendance, a quorum was established

NAWIC PLEDGE: As material for the construction of our building,
I pledge the agility of my hands, the ability of my mind
and the Integrity of my heart.

PROGRAM: **Jennifer Davis, CISR of Dawson Insurance gave a presentation on "Construction Insurance & Risk Transfer".**

CORRESPONDENCE: *Incoming:* Passed
Outgoing: Email - CDD Acknowledgement Letters, Meeting Notice, Newsletter & reports to Director
Mailed – Sponsorship, Speaker & Membership Packages along with Press Releases and requests for proclamations.

SECRETARY'S REPORT: January – Approved as printed

TREASURER'S REPORT: January – Filed for Audit
Presentation of Bills: None
Reports of Other Officers: None

COMMITTEE REPORTS: Printed in Newsletter - Amy gave an update on the Membership and PR & Marketing mailings

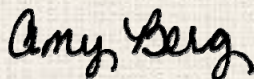
UNFINISHED BUSINESS:
Home Show: The show is Feb 21-23rd at the Fargo Dome. The schedule was discussed.

NEW BUSINESS:
BOARD RECOMMENDATIONS: None
NEW MEMBER INSTALLATION: None

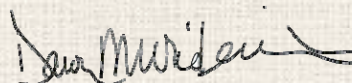
ANNOUNCEMENTS: Monthly Membership Recognition:
Jan - Overall - Dawn & Amy – 29 / Chapter - Dawn & Amy - 29
Construction Word Meaning: Angie & Jennifer each got one correct
Safety: Hazard communication terms - Dawn got them correct

Next Month Meeting: March Board Meeting - TBD
March 2-8 - WIC Week Events
March 13 - Membership Networking & Wine Tasting Event - Uncorked

ADJOURNMENT: There being no further business, the meeting was adjourned at 6:45 PM



Amy Berg, Secretary



Dawn Wiedewitsch, President

Chapter Member Information

Amy Berg, CBT, CIT

Joined - March 28, 1989
Innovative Window & Door Service, LLC
31576 SW Pickerel Lake Rd
Detroit Lakes, MN 56501
218-234-6633
aberg.nawic@yahoo.com

Lynn Madaus

Joined - December 1, 1996
Retired
3513 18th St. S
Fargo, ND 58104
701-200-8200
lynn_m89@yahoo.com

Suzi Retzlaff

Joined - October 1, 2006
Empire Engineering
1553 1st St
West Fargo, ND 58078
701-212-8484
retzlaff@hotmail.com

Dawn Wiedewitsch

Joined - February 1, 1998
Tomboy Tools
49234 245th Ave.
Pelican Rapids, MN 56572
218-849-2582
dmwied@yahoo.com



Quote of the Month

*"Why try so hard to fit in
when you're born to
stand out?"*



***If you have anything you would
like added to the Newsletter:***

Please contact: Amy Berg:
Phone: 218-234-6633
(leave message)
Email: aberg.nawic@yahoo.com

Region 13 Information

Director

Diane Mike, CBT
Erdman Company
PO Box 44975
Madison WI 53744
Cell # 608-444-0531
Office: 608-410-8046
Email: dmike@erdman.com

WEBSITE

Visit the regional website at
www.nawic13.org

NAWIC Office Contact Info

NAWIC
327 S. Adams St.
Fort Worth, Texas 76104
Phone - 800-552-3506
Fax - 817-877-0324

WEBSITE

Visit our national website at
www.nawic.org

FACEBOOK

Connect with us on Facebook at
facebook.com/nawicnational



Committee Reports

MEMBERSHIP

Chapter goal for the year - "Build Membership"!!

One step to accomplishing this goal - we are sending out invites to 20 new companies per month, picked randomly from the yellow pages to introduce them to the Fargo-Moorhead, ND Chapter #246 of NAWIC.

NAWIC has a "Membership Challenge" for 2013-2014 - "Building your Chapter"

Each chapter is challenged to create their own form of a "building" and identify the components necessary to construct it. These components represent the chapter members - existing and potential. Examples would include a real estate firm to buy the land to place the building on, utility firm to layout existing and new lines, excavator, architect, engineer, contractor, roofer, mason, lawyer to settle purchase/leasing/contracts, facility personnel (client), etc. Suzi Retzlaff has finished our plan and since we are starting at the ground floor that is where our building is starting (see diagram and info on page 13).

This challenge works with our goal to build our chapter membership!! So if you know anyone who is actively employed in any facet of the construction industry, from trades to owners (Active/Corporate Membership); a strong supporter of the industry (Associate Membership) or a student in a construction related field of study (Student Membership) please contact Membership Chair - Amy Berg for more information or go to our website - www.nawicfm246.org.

UPDATE: We continue to make contacts with companies in the area and are starting to receive requests for information in the chapter email.



Do any of these describe your job? Then NAWIC is for you!!!

- Accounting / Contract Administrator
- Business Owners
- Engineers / Architects
- Office Manager
- Project Managers
- Operations Managers
- Tradeswomen
- College Student (Construction Major)

PR & MARKETING

Information is being sent to our PR & Marketing contacts on a monthly basis for inclusion in their monthly news happenings.

For updates on what the Fargo-Moorhead, ND Chapter #246 is doing check out our Facebook page, our website or our bi-monthly articles "NAWIC #246 Corner" in the HBA of FM "Plains Builders".



\$CHOLAR\$HIP - DUE TO NFSF BY FEBRUARY 28TH!!!

Please let all students you know who are enrolled in one of the many construction fields that they may be eligible for a scholarship from the NAWIC Founders' Scholarship Foundation (NFSF). Applications are available on the NAWIC website - www.nawic.org Education NFSF and must be returned to the Foundation by February 28th each year to be considered.



Committee Reports

BYLAWS

The two national bylaws that had been circulated were voted on at NAWIC's Mid-year board meeting. Watch for further details from Director, Diane Mike.

WAYS & MEANS (FUNDRAISING)

Sponsorship Opportunities

Information packet is available on the chapter website: www.nawicfm246.org

Auction

November 20th is the date of our 2014 Auction. It's never too early to start thinking of who to invite and start gathering auction items.

Golf Tournament

September 11th, 2014 - golf at Rose Creek Golf Course - dinner & awards following provided by Seasons at Rose Creek. Watch for further details!!

PROGRAMS, EDUCATION AND PROJECTS (PEP)

Upcoming Events - Monthly Meetings

Letters were sent to 5 companies as possible speakers for upcoming meetings. Below is the list of dates & planned events through March:

Date	Event	Topic
April 10	Membership Meeting	"Green Cleaning" presented by Bethany Grahm
May 8	Membership Meeting	"Sanford Hospital-Under Construction"
June 12	Membership Meeting	"Tour of DIY Wood Studio" in Fargo
July	Fun Networking Night	Wine Walk—downtown Fargo
August	Membership Meeting	"STEM"

WIC WEEK - MARCH 2 - 8, 2014

The Fargo-Moorhead, ND Chapter expands WIC Week to encompass our booth at the Red River Valley Home & Garden Show, February 21st-23rd through our March meeting on the 13th.

Feb. 21-23rd - Members worked a booth at the Red River Valley Home & Garden Show where we were able to meet women employed in the construction industry as well as the many construction related businesses in our area. Names of prospective members and possible meeting were gathered over the three days. (follow ups have been made to all)

March 4th - Members cooked Lasagna, Ziti and cookies at the north Ronald McDonald House campus for the residents. While waiting for the food to cook, we make no-sew fleece blankets for Project Linus and put together "personal hygiene" bags for the YWCA Women's shelter.

March 13th - A Wine Tasting Networking event was held at Uncorked in downtown Fargo. Thank you to the guests from Western Bank and The Appraisal Company who were able to join us. We look forward to seeing you at future events and also as a future member of our chapter.

Proclamations were received from the State of Minnesota and the city of Fargo.



Committee Reports

SAFETY - FALL PROTECTION *(Taken from "Safety Puzzles for OSHA's Top Ten Violations")*

What is Fall Protection?

Fall protection is a system that is designed to protect personnel from the risk of falls when working at elevated heights.

Fall prevention is a structural design that limits a fall to the same level. Some examples are platforms with guardrails, bucket trucks, or aerial lifts with work platforms.

Fall arrest equipment is designed to significantly limit injuries in the event of a fall. It is very important that the equipment be selected and worn correctly.

In the construction industry in the United States, falls are the leading cause of worker fatalities. Annually, 150 to 200 workers are killed, and more than 100,000 are injured as a result of falls at construction sites. Fall protection must be provided at:

- 4 feet in general industry;*
- 5 feet in maritime; and*
- 6 feet in construction.*

However, regardless of the fall distance, fall protection must be provided when working over dangerous equipment and machinery.

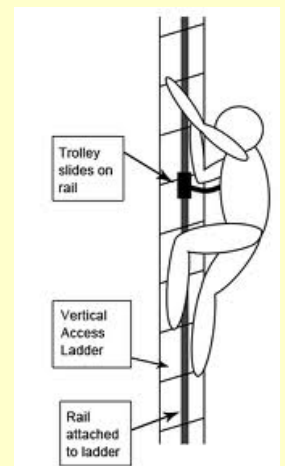
Any time a worker is at a height of six feet or more (construction industry) or four feet or more (general industry), the worker must be protected. Use at least one of the following precautions:

- Guardrail systems*
- Safety net systems*
- Fall arrest systems*
- Cover or guard floor holes as soon as they are created*
- Guard or cover any openings or holes immediately.*
- Construct all floor hole covers so that they will effectively support two times the weight of employees, equipment, and materials that might be imposed on the cover at any one time.*
- In general, it is better to use fall prevention systems, such as guardrails, than fall protection systems, such as safety nets or fall arrest devices.*



Employers and employees need to do the following:

- ✓ *Where protection is required, select fall protection systems appropriate for given situations.*
- ✓ *Use proper construction and installation of safety systems.*
- ✓ *Supervise employees properly.*
- ✓ *Use safe work procedures.*
- ✓ *Train workers in the proper selection, use, and maintenance of all protection systems.*





NAWIC Education Foundation



Educating the Construction Industry Today . . . and Tomorrow.

NAWIC Education Foundation

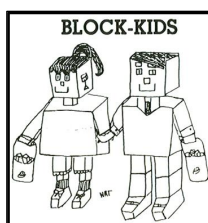
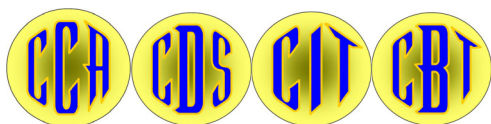
651 Danville Dr., Suite 100
Orlando, FL 32825

NEF Administrator - Patti Susko

Phone #: 407-384-9429
Fax #: 407-384-9430
Toll Free: 866-277-2883
Email: nef@bellsouth.net

ADULT EDUCATION PROGRAMS

Certified Construction Associate (CCA)
Construction Document Specialist (CDS)
Construction Industry Technician (CIT)
Construction Bookkeeping Technician (CBT)



Grades 1 - 6



Grades 8 - 12



Grades 9 - 12

Youth Programs

CAD/Design Drafting -



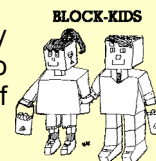
UPDATE!!

All 6 students who signed up for the competition this year have submitted their projects which are now being judged at the local level. The winner will be announced by April 15th.

For more details go to <http://www.nawicfm246.org> /
[Contact/Links](#) / [2013-14 NEF CAD Project and 13-14 246 CDD Intro Letter](#)

Block Kids -

Introduces children to the construction industry in an effort to create an awareness of and to promote an interest in future careers in one of the many facets of the industry.



NOTE: All "blocks" shall be interlocking types of the "Micro" size 2, 4, 6, 8 and 10 posts.
(No "Duplo" size blocks).



BECOME AN NEF AMBASSADOR... Would you like to help promote NEF to all of the Construction Industry?

Ambassadors will receive:

A **bronze pin** for completing **one** item above,
A **silver pin** for completing **two** items, and
A **gold pin** for completing **three** items or more.



The criteria to become a NEF Ambassador and the nomination form are available on the NEF website at www.nawiceducation.org.

The Fargo-Moorhead, ND Chapter
has the following NAWIC
promotional items for sale

For more details contact:
Amy Berg, CBT, CIT
aberg.nawic@yahoo.com

Tote Bag

SanMar Microfiber
14" X 17 1/2"

\$30.00 each.



Back Pack

Port & Company
14" X 17 1/2"

With Front Zipper Pocket

\$10.00 each.



Golf Towel

With hook
11 1/2" X 17 1/2"

\$10.00 each.



Qty	Item	Cost Ea.	Extended Cost
	Tote Bag	\$ 30.00	\$
	Back Pack	\$ 10.00	\$
	Golf Towel	\$ 10.00	\$
		Subtotal *	\$
* Plus Shipping			

Name: _____

Company ** _____

Address: _____

City: _____ State: _____ Zip Code: _____

Email address: _____ Contact Phone #: _____

(please provide a contact email address and/or phone #)

We will contact you with the final amount due that will include the shipping charges.

CONSTRUCTION EDUCATION - Do you know?

FALL PROTECTION: WORD SEARCH *(BRING YOUR ANSWERS TO THE MEETING)*

P R O F R E E F A L L P W O E
L E A D I N G E D G E R O P U
S S R O P E G R A B L E R E O
F T F A B L L P R O A T K N E
C T E I O U N S A V N E A I T
L S S E L I C V E S Y W R N O
Y I B N P P W K T L A H E G E
R X F O A R N K L J R X A D B
R N G E D P O M Z E D L Z M O
D D L P L Y H O F R T K K L A
D G G N J I B O F A N C H O R
J P C Z N R N E O J X J L X D
N T L V M C L E L K C J P T Z
J L T V Y V R N N T G K W D R
H J N K N H A R D W A R E V Y

Word Bank:

ANCHOR	LIFELINE
BODY BELT	OPENING
BUCKLE	ROPEGRAB
FREE FALL	SNAPHOOK
HARDWARE	STEEP ROOF
LANYARD	TOEBOARD
LEADING EDGE	WORK AREA

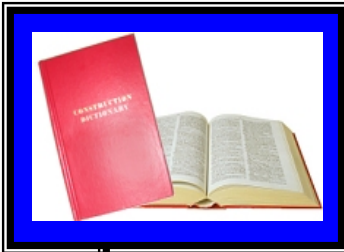
When you are done with the word search, the unused letters in the grid will spell out a hidden message. Fill in the hidden safety message on the lines below:

CORE PURPOSE

TO ENHANCE THE SUCCESS OF WOMEN IN THE CONSTRUCTION INDUSTRY.

CORE VALUES:

BELIEVE • PERSEVERE • DARE



THIS MONTHS CONSTRUCTION WORDS:

What do I mean?

- 1) Baffle _____
- 2) Stillicidium _____

➤ Whoever brings the correct definition to the meeting will receive a small prize.

Good luck to all!!!

(From - Construction Dictionary)

Answers from last month's Words:

- 1) Air blast - Forced air circulation
- 2) Undercroft - A vaulted underground chamber

Last months winner (s) - Angie & Jennifer got 1 and Dawn got the other

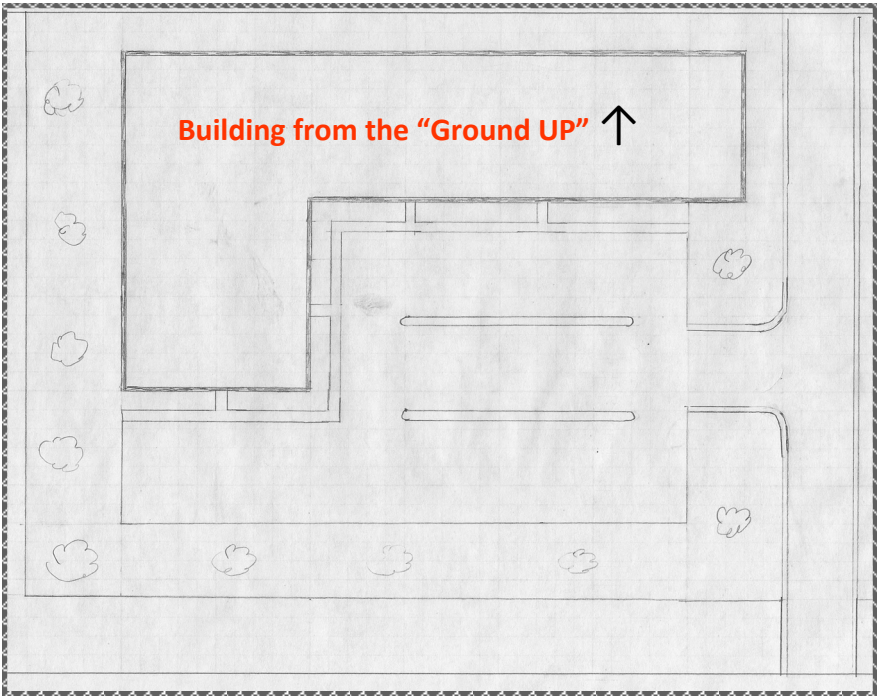


Membership Challenge

“Building Chapter #246”

Do you know of or are you a women employed in one of the many phases of the construction industry listed below? If so, we NEED you to help build the Fargo-Moorhead, ND Chapter #246.

For more information contact:
Membership Chair - Amy Berg
aberg.nawic@yahoo.com
218-234-6633



Architecture	Engineering	Interior Design
	Suzi Retzlaff (Empire Engineering)	
CONTRACTORS		
Electrical	HVAC	Plumbing
Roofing	Carpentry	Earthwork
Utilities	General	Paving
	Amy Berg (Innovative Wdw & Dr Service, LLC)	
Landscapers	Construction Equipment	Real Estate
Financials	Material Suppliers	Safety / Training
	Lynn Madaus (Brock White Co.) Retired	
	Dawn Wiedewitsch (Tomboy Tools)	
Insurance	Marketing	Other

National
Association
of Women
in Construction

NAWIC
Builds



Your Career.



Your Education.



Your Future.

Fargo-Moorhead, ND Chapter #246

Monthly Program Notice

Thursday, May 8, 2014

Holiday Inn (Club I) I-29 & 13th Ave. - Fargo, ND

Social Hour	5:30 pm
Dinner	6:00 pm
<i>(Order from menu - paid by individuals)</i>	
Meeting	6:30 pm

Program 6:45 pm

“Sanford Hospital - Under Construction”

Presented by: Joanna Slominski
Mortenson Construction

Mortenson Construction is building the “New” Sanford Hospital in Fargo. The tower cranes are in place and the work has started. Come learn what Mortenson’s has planned to meet the 2017 completion date.

RSVP by **May 5 2014** to: Amy Berg
by phone: 218-234-6633
or email: aberg.nawic@yahoo.com