



# ANGUS FEMALE SALE

KIST LIVESTOCK AUCTION NOV. 18 2016, 1 P.M. MANDAN, ND



*Selling every cow 5 years and older.*





AARON & SHEYNA STROMMEN



COOPER, CLINT & CASSIDY

*Welcome* to our inaugural female sale. We have worked hard on our cowherd to get to the point where we are able to offer quality females for sale and we are excited to present them for your appraisal.

We believe that true profitability in the beef business is driven by cattle that can do more with less.

As a seedstock provider, we want our customers' operations to be profitable and sustainable for generations – regardless of the market. That is why we require our stock to thrive in a Northern Plains, grass-based environment with minimal supplementation. They must do more with less.

Strommen Ranch cows must calve annually and wean a calf that is a high percentage of its dam's bodyweight. They must also possess the basic phenotypic traits to cover country, breed on time, have the smarts and mothering ability to do it on their own, all the while performing under the conditions that Mother Nature has dealt us. We select for fertility, longevity, sound structure and realistic performance in the cowherd.

Strommen Ranch calves grow out on grass. We DO NOT creep feed. It would be easy for us to achieve 800-900 lb. weaning weights if we used creep feed, but we choose to run our seedstock operation like a real-world commercial operation. We are proud of the fact that for 10 years straight, we've increased weaning weights, while maintaining mature cow size and placing downward pressure on our input costs. We are continually asking our cattle to do more with less.

We have brought a tremendous offering to town. Every bred, registered cow 5 years of age and older will be offered for your appraisal. We are excited to have some great cattle from Finke Cattle and Reich Angus. These programs have purchased cattle from us and you will see their breeding philosophy and management are similar to ours.

The sale will be at Kist Livestock Auction in Mandan, N.D., on Nov. 18, 2016, and will be broadcast on DVAuction. If you have any questions about the cattle, we would be happy to visit with you and help you with your selections. Contact us, the consignors, sale staff or Rance Long, our sale manager.

- Aaron & Sheyna Strommen



## Proven, Balanced, Cow-Makers

Our cattle are backed by generations of proven, efficient genetics, emphasizing: calving ease, fleshing ability, udder quality, disposition, structure and fertility.



# STROMMEN RANCH



## 2016 ANGUS FEMALE SALE

NOV. 18, 2016 • 1 P.M. CST

KIST LIVESTOCK AUCTION, MANDAN, ND

This sale will be broadcast live on the internet.

**DVAuction**  
Broadcasting Real-Time Auctions  
Real time bidding & proxy bidding available.

### SALE DAY PHONES

Aaron Strommen's Cell.....(701) 290-7983  
Sheyna Strommen's Cell.....(701) 290-3886  
Todd Finke's Cell .....(701) 240-7711



### AUCTIONEER

Kyle Shobe, 2010 World Champion Auctioneer  
Lewistown, MT • (406) 366-0472

### SALE STAFF

Kris Petersen.....(701) 339-0305  
Scott Dirk.....(605) 380-6024  
Scott Ressler.....(701) 391-7310

**SALE ORDER** • A sale order will be available sale day.

**TERMS AND CONDITIONS** • All animals sell under the standard terms and conditions of the American Angus Association. Terms of the sale are cash.

**SUPPLEMENTAL INFORMATION** • A supplement sheet will be available sale day with complete and up-to-date information. Announcements from the auction block take precedence over sale book information.

**EPDS** • EPDs are current as of Oct. 16, 2016.

**HERD HEALTH** • All cattle will be accompanied by proper health certificates for immediate shipment. Cows received Cattle-Master Gold FP5 and Spirovac VL5 and were poured. SimAngus™ Heifers have received Bovi-Shield Gold One Shot, Ultrabac 7 at pre-weaning and boosted and have been Bangs vaccinated.

**PHOTOS** • Photos of sale lots were captured by Aaron and/or Sheyna. We are far from being professional livestock photographers, but we at least partially enjoy the experience.

**TRUCKING** • Truckers believed to be reliable will be available to assist you with your purchases.

**LIABILITY** • Anyone attending this sale does so at their own risk. Neither the owners or anyone connected to this sale, assumes any liability, legal or otherwise.

**A.I. CERTIFICATES** • There will not be any A.I. certificates provided by Strommen Ranch or sale consignors on A.I.-bred cattle.

*We also invite you to join us for our*  
**ANGUS BULL SALE**  
AT THE RANCH FEB. 25 2017, 3 P.M. FORT RICE, ND

**Proven, Balanced, Cow-Makers**  
Our bulls and females are backed by generations of proven, efficient genetics, emphasizing: calving ease, fleshing ability, udder quality, disposition, structure and fertility.

**70 YEARLING & TWO-YEAR-OLD ANGUS BULLS**

*Featuring the service of:*  
SA V Resource 1441, Leachman Right Time  
O C C Juneau, Connealy Capitalist,  
Connealy Thunder

### SALE MANAGED WITH:

**RANCE LONG, INC**  
918-510-3464 cell  
rlong@rancelong.com  
www.rancelong.com

**A link to videos of the females will be available on our website**

[www.StrommenRanch.com](http://www.StrommenRanch.com)

Catalog, photos, print advertisements and website by **Strommen Livestock Services** • Fort Rice, N.D. • (701) 445-2020 • (701) 290-3886



# BURGETTE



**LOT 1 ● S R BURGETTE 031**

## **LOT 1 S R BURGETTE 031**

**BD: 3/20/2010**

**Reg #: 16800630**

O C C Focus 813F  
#O C C Paxton 730P  
O C C Blackbird 736K  
#Sitz Alliance 6595  
**S R Burgette 839**  
#Farview Burgette 4228

#Basin Rainmaker 654X  
Dixie Erica of C H 1019  
#O C C Great Plains 943G  
O C C Blackbird 824G  
#Sitz Traveler 8180  
#Sitz Barbaramere Jet 2698  
T M Outreach 027E  
Farview Burgette 156

CE	3
BW	2.8
WW	47
YW	80
MILK	24

S R Burgette 031 may be one of the top donor-cow prospects to ever come out of the Strommen Ranch herd. Her flawless weaning record of 5/110, with a 365-day calving interval, puts her at the top. This massively constructed female comes from a dam that logged a progeny record of WR: 3/109 and stems from a Pathfinder granddam that logged a progeny record of WR: 3/111. S R Burgette 031 has stuck first-cycle A.I. every year of her life, proving her fertility. She raised an SAV Resource 1441 heifer calf that is certainly at the top of 2016 heifer calf crop. The mating to Sinclair Emulation XXP is truly one of the most exciting matings to sell in this sale. She is one to build a program around. **Due 3/14/17 to Sinclair Emulation XXP, heifer calf.**



**S R Burgette 031 as a 6-Year-Old pictured with her 2016 calf.**



**S R Burgette 031 as a 3-Year-Old pictured with her 2013 calf.**





**LOT 2 • S R BLACKCAP 702**



*S R Blackcap 702 is the dam of S R Resource 415, the second high-selling lot of our 2015 Angus Bull Sale.*

## LOT 2 S R BLACKCAP 702

BD: 2/23/2007

Reg #: 15896062

#N Bar Emulation EXT  
#Larks Canyon 74D4  
Larks Miss Bando 74A

#Alberda Traveler 416  
S R Blackcap 510  
Blackcap 109 of Mc Cumber

#Emulation N Bar 5522  
N Bar Primrose 2424  
#Tehama Bando 155  
Nichols Blackbird Y174  
#D H D Traveler 6807  
Alberda Queen Kimberly 222  
#Rito 054 G D A R  
Blackcap 013 of Mc Cumber

CE	7
BW	0
WW	34
YW	66
MILK	18

Foundation genetics with near-perfect structure. She has stuck A.I. every year and is carrying a Resource heifer. Her production ratios are a little misleading as her 2012 calf went blind at a young age and ratioed 77. Larks Canyon, Traveler 416, Rito 054, Viking GD60 and Candolier Forever 376 are all included in her ancestry. She posts a progeny record of WR: 8/96, with a 366-day calving interval. **Due 3/14/17 to S A V Resource 1441, heifer calf.**

## LOT 3 S R BLACKCAP 150

BD: 3/22/2011

Reg #: 17114983

#O C C Magnitude 805M  
#21AR Outfitter 6032  
21AR Sara E802

#Larks Canyon 74D4  
S R Blackcap 702  
S R Blackcap 510

#O C C Emblazon 854E  
O C C Pollyanna 878G  
#B C C Bushwacker 41-93  
21 A R Sara 802

#N Bar Emulation EXT  
Larks Miss Bando 74A  
#Alberda Traveler 416  
Blackcap 109 of Mc Cumber

CE	-2
BW	0.9
WW	37
YW	70
MILK	19

This direct daughter of S R Blackcap 702 is out of 21AR Outfitter, who is known for producing big-bodied, easy-fleshing females with near-perfect feet. She has a progeny record of BR: 3/96 and WR: 3/101. **Due 4/3/17 to S A V Resource 1441, bull calf.**

## LOT 4 S R BLACKCAP 002

BD: 3/3/2010

Reg #: 16794198

#O C C Magnitude 805M  
#21AR Outfitter 6032  
21AR Sara E802

#Alberda Traveler 416  
S R Blackcap 509  
Blackcap 109 of Mc Cumber

#O C C Emblazon 854E  
O C C Pollyanna 878G  
#B C C Bushwacker 41-93  
21 A R Sara 802  
#D H D Traveler 6807  
Alberda Queen Kimberly 222  
#Rito 054 G D A R  
Blackcap 013 of Mc Cumber

CE	-2
BW	0.9
WW	38
YW	68
MILK	27

Another Outfitter daughter that has made Pathfinder status with BR: 4/100 and WR: 4/106. Her dam carries a progeny record of WR: 10/104. She has stuck A.I. every year and carries the service of Resource. **Due 4/5/17 to S A V Resource 1441, bull calf.**



# ALLIANCE 904 DAUGHTERS



**LOT 5 • LASSIE 104 OF CIRCLE V**

## LOT 5 LASSIE 104 OF CIRCLE V

BD: 2/13/2011

Reg #: 17184855

#Sitz Alliance 6595  
**S R Alliance 904**  
 S R Betty 512  
 MC Cumber 7078 VRD 3108  
**Lassie 6199 of Mc Cumber**  
 Lassie 331 of Mc Cumber

#Sitz Traveler 8180  
 #Sitz Barbaramere Jet 2698  
 #O C C Emblazon 854E  
 M H Betty 916  
 #Vermilion Dateline 7078  
 Lassie 974 of Mc Cumber  
 #Leachman Right Time  
 #Lassie 708 of Mc Cumber

CE	2
BW	2.6
WW	38
YW	72
MILK	34

A true donor cow prospect, Lassie 104 is a member of a tremendous set of half-sisters out of a Strommen Ranch-raised bull, S R Alliance 904. This Pathfinder female sports a progeny record of WR: 4/112 and YR: 3/108, with a 363-day calving interval. She is out of dam that recorded a progeny record of WR: 7/106 and YR: 7/105. This year, 104V raised an outstanding Resource bull calf that ratioed 106 and will sell in the 2017 Strommen Ranch Angus Bull Sale. Her first three calves were all bulls, selected by some of the top commercial cattlemen in the region. 104V has stuck every year to A.I. service, proving her capability to raise top-of-the-pen calves, while still maintaining her fertility. This female ties the traits together that are needed for profitable, real-world beef production. Dam's production record was WR: 7/106 and YR: 7@105. **Due 4/3/17 to S A V Resource 1441, heifer calf.**



**Lassie 104V  
of Circle V**

## LOT 6 MISS WIX 114 OF CIRCLE V

BD: 2/20/2011

Reg #: 17184850

#Sitz Alliance 6595  
**S R Alliance 904**  
 S R Betty 512

MC Cumber 6122 Equator 419  
**Miss Wix 667 of Mc Cumber**  
 #Miss Wix 2043 of Mc Cumber

#Sitz Traveler 8180  
 #Sitz Barbaramere Jet 2698  
 #O C C Emblazon 854E  
 M H Betty 916  
 #Mc Cumber Equator 6122  
 Rosetta 162 of Mc Cumber  
 Garrison 8128 Dynamite  
 #Miss Wix 352 of Mc Cumber

CE	-2
BW	2.9
WW	43
YW	78
MILK	24

Another good Alliance 904 daughter with a progeny record of WR: 4/103. This female has stuck to A.I. service every year with a 364-day calving interval. **Due 4/2/17 to S A V Resource 1441, bull calf.**

**"IF YOU CAN'T PUT YOUR HEAD  
ON YOUR PILLOW AT NIGHT AND  
VISUALIZE YOUR IDEAL COW,  
THE ODDS OF YOU MAKING ONE  
ARE VERY, VERY SLIM."**

**"I AM ANGUS: ED OLIVER, GEORGIA"**





# ALLIANCE 904 DAUGHTERS

## LOT 7 MISS WIX 129 OF CIRCLE V

BD: 2/27/2011

Reg #: 17184858

#Sitz Alliance 6595	#Sitz Traveler 8180	CE	0
<b>S R Alliance 904</b>	#Sitz Barbaramere Jet 2698	BW	3
S R Betty 512	#O C C Emblazon 854E	WW	35
MC Cumber New Trend 1206	M H Betty 916	YW	57
<b>Miss Wix 6212 of Mc Cumber</b>	#A A R New Trend	MILK	32
Miss Wix 1001 of Mc Cumber	Miss Wix 705 of Mc Cumber		
	#Q A S Traveler 23-4		
	#Miss Wix 352 of Mc Cumber		

Here is a Pathfinder daughter of Alliance 904 from the Miss Wix cow family that carries a production record of WR: 4/107 with a 366-day calving interval. Her dam posts a progeny record of WR: 8/101. Hard to go wrong with these 904 daughters. 129 weaned a Resource bull calf this year that ratioed 111. **Due 3/14/17 to S A V Resource 1441, heifer calf.**



LOT 9 BLACKCAP 146 OF CIRCLE V

## LOT 9 BLACKCAP 146 OF CIRCLE V

BD: 3/16/2011

Reg #: 17184844

#Sitz Alliance 6595	#Sitz Traveler 8180	CE	1
<b>S R Alliance 904</b>	#Sitz Barbaramere Jet 2698	BW	2.6
S R Betty 512	#O C C Emblazon 854E	WW	40
Sinclair True Value 6PV20	M H Betty 916	YW	71
<b>Blackcap 822 of Circle V</b>	#Sinclair Net Present Value	MILK	25
#Blackcap 6179 of Mc Cumber	N Bar Miss Emulous A404		
	MC Cumber 7078 VRD 3108		
	Blackcap 3167 of Mc Cumber		

A uniquely bred female combining the programs of Sitz, Ohlde, Sinclair and Mc Cumber. She will bring in a heavy Resource bull calf next fall. She posts a production record of WR: 4/100. Her dam has a progeny record of WR: 4/102. **Due 3/13/17 to S A V Resource 1441, bull calf.**

## LOT 8 MISS WIX 110 OF CIRCLE V

BD: 2/19/2011

Reg #: 17184849

#Sitz Alliance 6595	#Sitz Traveler 8180	CE	-3
<b>S R Alliance 904</b>	#Sitz Barbaramere Jet 2698	BW	4.8
S R Betty 512	#O C C Emblazon 854E	WW	26
MC Cumber New Trend 1206	M H Betty 916	YW	51
<b>Miss Wix 6134 of Mc Cumber</b>	#A A R New Trend	MILK	26
Miss Wix 2129 of Mc Cumber	Miss Wix 705 of Mc Cumber		
	#Mc Cumber Foundation 701		
	Miss Wix 765 of Mc Cumber		

Here is a high-maternal bred female with the foundation genetics of Alliance, Emblazon, New Trend and Tehama Bando 155. **Due 4/22/17 to Double R Bar Rito A116,**



S R Betty 512 is the dam of S R Alliance 904, sire of Lots 5-10.

## LOT 10 MISS WIX 145 OF CIRCLE V

BD: 3/16/2011

Reg #: 17184842

#Sitz Alliance 6595	#Sitz Traveler 8180	CE	0
<b>S R Alliance 904</b>	#Sitz Barbaramere Jet 2698	BW	3.3
S R Betty 512	#O C C Emblazon 854E	WW	34
MC Cumber 8005 New Day 455	M H Betty 916	YW	73
<b>Miss Wix 6227 of Mc Cumber</b>	#Boyd New Day 8005	MILK	27
Miss Wix 4179 of Mc Cumber	Enchantress 086 of Mc Cumber		
	#BT New Trend 172K		
	Miss Wix 9101 of Mc Cumber		

A tremendous producer, this Pathfinder daughter is out of the female maker, Alliance 904. This cow proves her value in the fact she has stuck A.I. every year and still achieved Pathfinder status. Her progeny record is WR: 4/104, with a 365-day calving interval. Her dam posted a progeny record of WR: 5/100. **Due 4/3/17 to S A V Resource 1441, bull calf.**







**LOT 11 • S R ELDORENE 966**

## LOT 11 S R ELDORENE 966

BD: 3/11/2009

Reg #: 16549770

#O C C Magnitude 805M  
#21AR Outfitter 6032  
21AR Sara E802

#S A V 8180 Traveler 004  
#S R Eldorene 604  
M H Eldorene 712

#O C C Emblazon 854E  
O C C Pollyanna 878G  
#B C C Bushwacker 41-93  
21 A R Sara 802  
#Sitz Traveler 8180  
Boyd Forever Lady 8003  
#V D A R Lucys Boy  
M H V D A R Eldorene 410

CE	-8
BW	3.5
WW	40
YW	70
MILK	24

Eldorene 966 has certainly earned her spot as one of our favorites. She is a massively constructed Outfitter daughter that has a WR: 6/101 and with a 366-day calving interval. Her calves have a average birth weight of 84 pounds. Her deep-bodied, easy-fleshing Pathfinder dam, who posts a progeny record of WR: 6/108, stems from our productive foundation Eldorene 712 cow. 966's mating to Sinclair Emulation XXP should definitely draw some interest! **Due 3/17/17 to Sinclair Emulation XXP, heifer calf.**



*This son of S R Eldorene 966 was another high-selling lot in our 2015 Angus Bull Sale.*

## LOT 12 S R ELDORENE 009

BD: 3/8/2010

Reg #: 16800642

O C C Focus 813F  
#O C C Paxton 730P  
O C C Blackbird 736K

#B C C Bushwacker 41-93  
S R Eldorene 520  
M H Eldorene 712

#Basin Rainmaker 654X  
Dixie Erica of C H 1019  
#O C C Great Plains 943G  
O C C Blackbird 824G  
#Paramont Ambush 2172  
R C Anita T Bando 918903  
#V D A R Lucys Boy  
M H V D A R Eldorene 410

CE	7
BW	0.8
WW	41
YW	65
MILK	17

This beautiful, light-birth Paxton daughter from the Eldorene cow family should be on your list. Her low-birth Bushwacker dam is out of our foundation Eldorene 712 cow. Calving interval of 5/366 and a progeny record of WR: 4/104. **Due 3/14/17 to Sinclair Emulation XXP, bull calf.**



**LOT 12 • S R ELDORENE 009**





LOT 13 • S R LUCY 951

**LOT 13 S R LUCY 951**

BD: 3/5/2009

Reg #: 16572771

#N Bar Emulation EXT  
**#O C C Great Plains 943G**  
 Dixie Erica of C H 1019

Oak Hollow 7709 of 1318 1118  
**#S R Lucy 646**  
 #S R Lucy 403

#Emulation N Bar 5522  
 N Bar Primrose 2424  
 #PBC 707 1M F0203  
 Dixie Erica of C H 615  
 Oak Hollow Troubadour 1118  
 Oak Hollow Blackcap 1318  
 #B C C Bushwacker 41-93  
 M H Beauty 067

CE	10
BW	-0.3
WW	42
YW	69
MILK	21

This low-birth Lucy female carries a progeny record of BR: 6/98 and WR: 6/102. She stems from a Pathfinder dam that had a progeny record of WR: 6/104 and a Pathfinder granddam that achieved a progeny record of WR: 10/101. **Due 4/20/17 to Multi-sire.**



This 2-year-old son of S R Lucy 319 sold in our 2016 Angus Bull Sale.

**LOT 14 SR LUCY 319**

BD: 4/17/2003

Reg #: 14533679

#D H D Traveler 6807  
**#O C C Emblazon 854E**  
 Dixie Erica of C H 1019

#N Bar Emulation EXT  
**M H Lucy 761**  
 V D A R Lucy 336

#Q A S Traveler 23-4  
 #Bemindful Maid D H D 0807  
 #PBC 707 1M F0203  
 Dixie Erica of C H 615  
 #Emulation N Bar 5522  
 N Bar Primrose 2424  
 #Rito 2100 G D A R  
 V D A R Lucy 1

CE	5
BW	0.8
WW	30
YW	54
MILK	16

This one is hard to let go. She has been one of my favorite cows for years. She has a calving interval of 12/366 and a calving-ease foundation pedigree. Perfect udder, easy keeping and has been good for years. She comes from a perfect-uddered dam that also had 12 calves recorded. **Due 4/1/17 to Double R Bar Rito A116, bull calf.**



LOT 14 • S R LUCY 319



# ALLIANCE 6595 DAUGHTERS

## LOT 15 S R TRAVETT 801

Below: S R Travett 801 is pictured with her 2016 heifer calf. She is ultrasound safe to Sinclair Emulation XXP, with a heifer for 2017.



## LOT 15 S R TRAVETT 801

BD: 3/1/2008

Reg #: 16572799

#Sitz Traveler 8180  
#Sitz Alliance 6595  
#Sitz Barbaramere Jet 2698  
#O C C Emblazon 854E  
S R Travett 501  
#S R Travett 105

#G D A R Traveler 71  
Sitz Everelda Entense 1137  
3 Bar Spike 1766  
#Sitz Baramere Jet 155  
#D H D Traveler 6807  
Dixie Erica of C H 1019  
Sodak Precision 707-97  
Sodak Travett 3002

CE	9
BW	0.4
WW	42
YW	72
MILK	24

Here is one of the original Sitz Alliance 6595 daughters that just keeps getting better with age. She has production ratios of BR: 7/97 and WR: 7/102 with a 352-day calving interval. The Alliance x Emblazon cross worked very well for us. Her 2016 Resource heifer is certainly near the top of the replacement pen. **Due 3/14/17 to Sinclair Emulation XXP, heifer calf.**



This son of S R Betty 820 sold for \$7,500 in our 2016 Angus Bull Sale. She is ultrasound safe to Sinclair Emulation XXP with a bull calf for 2017.



## LOT 16 S R BETTY 820

## LOT 16 S R BETTY 820

BD: 3/8/2008

Reg #: 16572798

#Sitz Traveler 8180  
#Sitz Alliance 6595  
#Sitz Barbaramere Jet 2698  
#O C C Emblazon 854E  
S R Betty 417  
M H Betty 916

#G D A R Traveler 71  
Sitz Everelda Entense 1137  
3 Bar Spike 1766  
#Sitz Baramere Jet 155  
#D H D Traveler 6807  
Dixie Erica of C H 1019  
#Papa Durabull 9805  
V D A R Betty 23

CE	3
BW	1.6
WW	41
YW	71
MILK	23

This Sitz Alliance 6595 daughter is a big-bodied, massive female. She is one of the easiest fleshing females we have and she is due to have an XXP bull calf. She has a 365-day calving interval and a progeny record of WR: 7/103. **Due 3/13/17 to Sinclair Emulation XXP, bull calf.**



## ● LOT 17 ● S R BEAUTY 425

Below: S R Beauty 425 is  
pictured with her 2016  
heifer calf by  
Connealy Thunder



## LOT 17 S R BEAUTY 425

BD: 4/16/2004

Reg #: 14895614

#D H D Traveler 6807  
#O C C Emblazon 854E  
Dixie Erica of C H 1019  
V D A R High Profile 22  
M H Beauty 9121  
V D A R Beauty 50

#Q A S Traveler 23-4  
#Bemindful Maid D H D 0807  
#PBC 707 1M F0203  
Dixie Erica of C H 615  
#P S High Pockets  
V D A R Polly 215  
#A A R New Trend  
#VDAR Revolution Beauty 375

CE	1
BW	2.3
WW	30
YW	53
MILK	14

A proven Beauty cow out of the Ohlde herdsire, Emblazon. She has stuck to A.I. service for the last eight years and is a granddaughter of the great Beauty 50 cow. **Due 3/13/17 to Sinclair Emulation XXP, bull calf.**



V D A R Beauty 50 is the grandam of Lots 17, 37 and 38.

## LOT 18 S R BEAUTY 706

BD: 3/5/2007

Reg #: 15896045

#N Bar Emulation EXT  
#Leachman Right Time  
Leachman Erica 0025  
O C C Exodus 712E  
M H Beauty 807  
M H Beauty 639

#Emulation N Bar 5522  
N Bar Primrose 2424  
#Tehama Bando 155  
Leachman Erica 8058  
#O C C Bonanza 8808  
Dixie Erica of C H 1019  
#Paramont Ambush 2172  
V D A R Beauty 610

CE	-1
BW	2.7
WW	35
YW	61
MILK	21

Here is a Right Time female that has stuck to her A.I. service for the last seven years, with a calving interval of 8/362. She has a progeny record of WR: 8/101 with a 362-day calving interval. Her O C C Exodus dam has a progeny record of WR: 9/103. Her 2016 Resource bull is retained for the 2017 Strommen Ranch Angus Bull Sale and logged a WR of 106. **Due 3/12/17 to S A V Resource 1441, bull calf.**



LOT 18 ● S R BEAUTY 706



# DOROTHY IDEAL



**LOT 19 S R DOROTHY IDEAL 825**



**LOT 20 S R DOROTHY IDEAL 011**

## LOT 19 S R DOROTHY IDEAL 825

BD: 3/9/2008

Reg #: 16185555

#O C C Magnitude 805M  
#21AR Outfitter 6032  
21AR Sara E802

#Ideal 7451 of 8103 4465  
Ideal 4535 of 7451 5467  
Ideal 5467 of 6807 7211

#O C C Emblazon 854E  
O C C Pollyanna 878G  
#B C C Bushwacker 41-93  
21 A R Sara 802  
Ideal 8103 of Eldo 5110 5213  
Ideal 4465 of 6807 4286  
#D H D Traveler 6807  
IDEAL7211 Landmark 5215 4108

CE	-12
BW	3.2
WW	46
YW	79
MILK	24

This Outfitter female is a direct daughter of our foundation Dorothy Ideal 4535 cow. She sports progeny ratios of BR: 7/100 and WR: 7/101, with a 370-day calving interval. Her dam has a progeny record of WR: 11/100. This mating to XXP is a unique blend of the Sinclair and Jorgenson programs. The resulting heifer will truly be something of value. 825's calves have an average birth weight of 82 pounds. **Due 3/13/17 to Sinclair Emulation XXP, heifer calf.**

## LOT 20 S R DOROTHY IDEAL 011

BD: 3/9/2010

Reg #: 16794201

#O C C Magnitude 805M  
#21AR Outfitter 6032  
21AR Sara E802

#Ideal 7451 of 8103 4465  
Ideal 4535 of 7451 5467  
Ideal 5467 of 6807 7211

#O C C Emblazon 854E  
O C C Pollyanna 878G  
#B C C Bushwacker 41-93  
21 A R Sara 802  
Ideal 8103 of Eldo 5110 5213  
Ideal 4465 of 6807 4286  
#D H D Traveler 6807  
IDEAL7211 Landmark 5215 4108

CE	-10
BW	2.6
WW	41
YW	78
MILK	21

Another Dorothy Ideal cow carrying a Resource heifer calf. Her granddam, Ideal 5467 was one of the best 6807 daughters the Jorgenson program ever produced. There is a history of high ribeye area in this cow family. 011 has never missed her first-cycle A.I. service. Her calves have an average birth weight of 85 lbs. **Due 3/13/17 to S A V Resource 1441, heifer calf.**

## LOT 21 S R DOROTHY IDEAL 310

BD: 3/06/13

Reg #: 17690535

O C C Focus 813F  
#O C C Paxton 730P  
O C C Blackbird 736K

#21AR Outfitter 6032  
S R Dorothy Ideal 825  
Ideal 4535 of 7451 5467

#Basin Rainmaker 654X  
Dixie Erica of C H 1019  
#O C C Great Plains 943G  
O C C Blackbird 824G  
#O C C Magnitude 805M  
21AR Sara E802  
#Ideal 7451 of 8103 4465  
Ideal 5467 of 6807 7211

CE	4
BW	-.3
WW	46
YW	75
MILK	21

**Owned by Finke Cattle.** This easy-fleshing, beautifully uddered Paxton daughter is sure to catch your eye on sale day. She is a off to a great start on her progeny record with a NR: 2/104. **Due 3/01/17 to S A V Resource 1441.**





**LOT 22 • S R DOROTHY IDEAL 824**

## LOT 22 S R DOROTHY IDEAL

BD: 3/9/2008

Reg #: 16189113

#N Bar Emulation EXT  
#O C C Great Plains 943G  
Dixie Erica of C H 1019  
  
#Ideal 7451 of 8103 4465  
**Ideal 3551 of 7451 7387**  
Ideal 7387 of 5306 5141

#Emulation N Bar 5522  
N Bar Primrose 2424  
#PBC 707 1M F0203  
Dixie Erica of C H 615  
Ideal 8103 of Eldo 5110 5213  
Ideal 4465 of 6807 4286  
Ideal 5306 of 2462 3383  
#Ideal 5141 of WW Rito 1228

CE	-3
BW	3.4
WW	34
YW	68
MILK	18

Here is a massive, big-bodied Great Plains daughter that has a calving interval of 7/364, and is due with a Resource bull calf. **Due 3/14/17 to S A V Resource 1441, bull calf.**

## LOT 24 IDEAL 4535 OF 7451 5467

BD: 2/22/2004

Reg #: 14777214

Ideal 8103 of Eldo 5110 5213  
**#Ideal 7451 of 8103 4465**  
Ideal 4465 of 6807 4286  
  
#D H D Traveler 6807  
**Ideal 5467 of 6807 7211**  
IDEAL7211 Landmark 5215 4108

Eldorado 5110 Ideal 2228 156  
Landmark 5213 of Ideal 9100  
#D H D Traveler 6807  
E E 4286 of Ideal 2240 1254  
#Q A S Traveler 23-4  
TBemindful Maid D H D 0807  
Landmark 5215 of Ideal 9100  
Eldorado 4108 Ideal 959 156

CE	-3
BW	3.1
WW	39
YW	71
MILK	20

Here's the original foundation Dorothy Ideal cow. She has a progeny record of WR: 11/100, with a 365-day calving interval. Her donor dam, Ideal 5467, was one of the best 6807 daughters Jorgensons ever produced. 4535 has stuck to her A.I. service 9 out of 11 years. She may have some age on her, but this mating to Right Time with a resulting heifer calf is certainly interesting. **Due 4/6/17 to Leachman Right Time, heifer calf.**

*This son of  
Ideal 4535 sold in  
our 2016 Angus  
Bull Sale. 4535 is  
ultrasound safe  
with a Leachman  
Right Time heifer  
calf for 2017.*



**LOT 23 • S R DOROTHY 968**

## LOT 23 S R DOROTHY 968

BD: 3/15/2009

Reg #: 16572786

#N Bar Emulation EXT  
#O C C Great Plains 943G  
Dixie Erica of C H 1019  
  
Ideal 0452 OF 5439 467  
**Ideal 4637 of 452 285**  
Ideal 285 of 049 5486

#Emulation N Bar 5522  
N Bar Primrose 2424  
#PBC 707 1M F0203  
Dixie Erica of C H 615  
#Ideal 5439 of 1418 2455  
Ideal 467 of 0147 955  
Ideal 049 OF F506 6375  
Ideal 5486 of 3109 2223

CE	-2
BW	2.4
WW	33
YW	73
MILK	15

This long-bodied, sleek-fronted Great Plains daughter is carrying the service of Resource with a first-cycle heifer calf. She has a calving interval of 359 days. She is a unique combination of the Ohlde and Jorgenson programs. **Due 3/12/17 to S A V Resource 1441, heifer calf.**



**Ideal 5467 of 6807 7211 is the dam of Lot 24 and  
the granddam of Lots 19-21.**

## LOT 25 S R DOROTHY IDEAL 3127

BD: 4/5/2013

Reg #: 17690585

#S A F Focus of E R  
#Woodhill Admiral 77K  
Woodhill Lass 344-1178  
  
#O C C Paxton 730P  
**S R Dorothy Ideal 029**  
S R Dorothy Ideal 825

#S A F Fame  
G D A R Forever Lady 246  
#R R Scotchcap 9440  
Woodhill Lass 1172-344  
O C C Focus 813F  
O C C Blackbird 736K  
#21AR Outfitter 6032  
Ideal 4535 of 7451 5467

CE	0
BW	2
WW	50
YW	87
MILK	23

A granddaughter of the cow selling as Lot 19. This female posts a progeny record of WR: 1/114 and a YR: 1/113. She lost her 2016 calf to pneumonia. **Due 3/13/17 to Connealy Capitalist 028, bull calf.**





**LOT 26 • S R CLOVA PRIDE 725**

## LOT 26 S R CLOVA PRIDE 725

BD: 3/11/2007

Reg #: 15896051

#Paramont Ambush 2172  
#B C Bushwacker 41-93  
R C Anita T Bando 918903

O C C Broadside 876B  
M H Clova Pride 834  
Miss Lodge Pole 932

#Bandolier Eston Durness 42B  
E W S Miss Burgess 1720  
#Tehama Bando 155  
R C Traveling Ann 8903  
#D H D Traveler 6807  
Revolution Rose of R R 9239  
Feirings 402 Rito 2100  
I O U Miss Pilgrim 768

CE	9
BW	-0.6
WW	42
YW	58
MILK	19

This beautifully constructed, low-birth Bushwacker daughter goes back to Broadside and is due with a heifer calf by XXP. Her progeny record is BR: 8/91 and WR: 8/101; plus, she has 365-day calving interval. Her dam recorded 12 calves on AHIR. **Due 4/4/17 to Sinclair Emulation XXP, heifer calf.**

## LOT 28 S R CLOVA PRIDE 426

BD: 3/10/2014

Reg #: 18010815

#Boyd New Day 8005  
#GDAR Game Day 449  
#G D A R Miss Wix 474

#Brooks Ext 792  
#Basin Clova Pride 933L  
Basin Clova Pride 776J

#A A R New Trend  
S V F Forever Lady 57D  
#Tehama Band 207  
G D A R Miss Wix 749  
#N Bar Emulation EXT  
Princess 4103 B C B R  
#Basin Rainmaker 814Z  
Basin Clova Pride 2047

CE	14
BW	-3.5
WW	35
YW	66
MILK	27

This extremely low-birth Clova Pride daughter is carrying a Resource heifer calf that has unlimited potential. Her Pathfinder dam has a WR: 9/103 and a proven maternal pedigree. 426 is a full sister to Lot 27. **Due 3/13/17 to S A V Resource 1441, heifer calf.**

## LOT 27 S CLOVA PRIDE 263

BD: 3/16/2012

Reg #: 17300979

#Boyd New Day 8005  
#GDAR Game Day 449  
#G D A R Miss Wix 474

#Brooks EXT 792  
#Basin Clova Pride 933L  
Basin Clova Pride 776J

#A A R New Trend  
S V F Forever Lady 57D  
#Tehama Band 207  
G D A R Miss Wix 749  
#N Bar Emulation EXT  
Princess 4103 B C B R  
#Basin Rainmaker 814Z  
Basin Clova Pride 2047

CE	14
BW	-2.3
WW	41
YW	75
MILK	27

**Owned by Finke Cattle.** This type of female should probably never leave the ranch. This Spickler-bred female has a progeny record of BR: 3/87 and WR: 3/101. She has a son working for the Varty Ranch. 263 is a full sister to Lot 28. **Due 2/28/17 to S A V Resource 1441.**



**Basin Clova Pride 933, a Spickler Ranch donor cow, is the dam of Lots 27 and 28.**





**LOT 29 MISS WIX 1209 OF MCCUMBER**

**LOT 29 MISS WIX 1209 OF MC CUMBER**

BD: 3/8/2011

Reg #: 16976344

#N Bar Emulation EXT  
**Sitz JLS Emulation Ext 536P**  
Ideal 4465 of 6807 4286

#Leachman Right Time  
**Miss Wix 7051 OF Mc Cumber**  
Miss Wix 498 of Mc Cumber

#Emulation N Bar 5522  
N Bar Primrose 2424  
#D H D Traveler 6807  
E E 4286 of Ideal 2240 1254  
#N Bar Emulation EXT  
Leachman Erica 0025  
#Mc Cumber 124 Traveler 212  
Miss Wix 063 of Mc Cumber

CE	-1
BW	2.8
WW	25
YW	42
MILK	26

1209's pedigree is packed with great cows: Ideal 4465, Primrose 2424, Leachman Erica 0025 and Miss Wix 365 of Mc Cumber. This double-bred EXT cow is beautifully constructed with body, length and a near-perfect udder. The granddam was a donor for Mc Cumber Angus. Lot 29 posts a 365-day calving interval. **Due 3/15/17 to S A V Resource 1441, heifer calf.**

**LOT 31 MISS WIX 1165 OF MC CUMBER**

BD: 2/17/2011

Reg #: 16976311

#O C C Emblazon 854E  
**O C C Tremendous 619T**  
O C C Dixie Erica 960H

Sitz Rainmaker 6536  
**Miss Wix 986 OF Mc Cumber**  
Miss Wix 6117 of Mc Cumber

#D H D Traveler 6807  
Dixie Erica of C H 1019  
#O C C Anchor 771A  
O C C Dixie Erica 907C  
#Sitz Rainmaker 6169  
#Sitz Elsiemere 331  
#Sinclair Extra 4X13  
#Miss Wix 8002 of Mc Cumber

CE	6
BW	0.5
WW	41
YW	63
MILK	25

1165 has never been bred by a bull. She has always taken to her A.I. service date. This low-birth Miss Wix is carrying a Resource bull calf. **Due 3/13/17 to S A V Resource 1441, bull calf.**



*Miss Wix 365 of McCumber*



**LOT 30 MISS WIX 107 OF CIRCLE V**

**LOT 30 MISS WIX 107 OF CIRCLE V**

BD: 2/16/2011

Reg #: 17184854

#R R Rito 707  
**Sinclair Entrepreneur 8R101**  
N Bar Kinochtry Beauty Z1925

#Sinclair Extra 4X13  
**Miss Wix 803 of Circle V**  
Miss Wix 6102 of Mc Cumber

Rito N Bar  
Eriskay of Rollin Rock 3  
#N Bar Emulation EXT  
#N Bar Kinochtry Beauty 4310  
#N Bar Emulation EXT  
N Bar Lady Ida S C C 2P37  
MC Cumber 7111 Total Value  
Miss Wix 765 of Mc Cumber

CE	2
BW	3
WW	38
YW	64
MILK	10

Here is a really nice-made cow from the Miss Wix cow family at Mc Cumber. 107 is near-perfect uddered with a 354-day calving interval. **Due 4/27/17 to Multi-sire.**



**LOT 32 ERIANNA 1141 OF MCCUMBER**

**LOT 32 ERIANNA 1141 OF MC CUMBER**

BD: 2/9/2011

Reg #: 16976291

#N Bar Emulation EXT  
**#Sinclair Extra 4X13**  
N Bar Lady Ida S C C 2P37

#Leachman Right Time  
**Erianna 8021 of Mc Cumber**  
#Erianna 2206 of Mc Cumber

#Emulation N Bar 5522  
N Bar Primrose 2424  
#N Bar Prime Time D806  
N Bar Lady Ida F1080  
#N Bar Emulation EXT  
Leachman Erica 0025  
#Mc Cumber 6122 Equator 811  
Erianna 880 of Mc Cumber

CE	7
BW	-0.4
WW	32
YW	62
MILK	23

1141 stems from a foundation Pathfinder donor cow, Erianna 2206 of McCumber, who had progeny ratios of WR: 5/109 and YR: 5/110. She sold through the 2009 Mc Cumber Angus Female Sale and was still in production at 14 years of age. **Due 3/12/17 to S A V Resource 1441, bull calf.**





**LOT 33 • BRUSETT BLACK LADY X95**

## LOT 33 BRUSETT BLACK LADY X95

BD: 3/14/2010

Reg #: 16769567

#H A Image Maker 0415  
**XCR Image Maker U444**  
HCR Beauty R 314

#Leachman Right Time  
**Brusett Black Lady Q795**  
Brusett Black Lady 836

#Hero 6267 of R R 2418  
H A Rito Blackcap 9038  
#G A R US Premium Beef  
XCR Beauty L64  
#N Bar Emulation EXT  
Leachman Erica 0025  
#Brusett Mayor 59  
Brusett Extra Investment 208

CE	6
BW	0.7
WW	46
YW	83
MILK	24

**Owned by Finke Cattle.** The X95 cow has been a very solid producing female for us with a NR: 5/102. Her Right Time dam is in the pedigree of some of our top-producing females. A maternal sister weaned her first calf this fall at 815 lbs, a bull calf by SAV Final Answer. **Due 3/17/17 to S R Game Day 213.**

## LOT 34 BRUSETT FOREVER Q742

BD: 3/18/2007

Reg #: 15943435

Brusett Timeline 207  
**Brusett Timesaver 91**  
Brusett Black Lady 836

Brusett Appraiser 84  
**Brusett 8180 325**  
Brusett 8180 811

#Connealy Timeline  
Brusett 520 J006  
#Brusett Mayor 59  
Brusett Extra Investment 208  
#Rito 2RT2 of 0B5RR Traveler  
#Brusett EXT 210  
#Sitz Traveler 8180  
Brusett 752 433

CE	2
BW	1.9
WW	43
YW	83
MILK	15

**Owned by Finke Cattle.** The 742 female was purchased out of the Brusett dispersal in Montana for her outcross genetics and extreme low birth weight potential. She has recorded a BR: 7/89. We have retained several daughters by this foundation cow. **Due 3/01/17 to S A V Resource 1441.**



**LOT 34 • BRUSETT FOREVER Q742**



**LOT 35 • BRUSETT BLACK LADY Z25**

## LOT 35 BRUSETT BLACK LADY Z25

BD: 4/28/2012

Reg #: 17279692

#H A R B Denali 788 J H  
**#21AR Denali 0215A**  
21AR Blackcap 7007A

Vermilion Extra T21  
**Brusett Black Lady W660**  
Brusett Black Lady P660

#Connealy Thunder  
#H A R B Princess Vel 36 J H  
#HARB Pendleton 765 J H  
21AR Blackcap F96C  
#Nichols Extra K205  
Vermilion Lass 0465  
N Bar Dynamite X3714  
Brusett Black Lady 836

CE	4
BW	1.4
WW	43
YW	70
MILK	29

**Owned by Finke Cattle.** Here is a high-performing 21AR Denali daughter that has a NR: 3/106. Z25 is a very attractive made female with an excellent udder. **Due 3/23/17 to S R Game Day 213.**





**LOT 36 • DR MABEL 198**

## LOT 36 DR MABEL 198

BD: 3/26/2011

Reg #: 16985505

#Hero 6267 of R R 2418  
**Sinclair Super Hero 8RD2**  
 Sinclair Lady OC4 4465  
 Sinclair Mt Time 4P88  
**DR Mabel 695**  
 DR Mabel 2028

#R R Hero 6267  
 R R Everelda Entense 0413  
 #Papa Rito T Intense DHD 6844  
 Ideal 4465 of 6807 4286  
 #N Bar Prime Time D806  
 N Bar Lady Ida X2912  
 Papa Romeo 8050  
 DR Mabel 9601

CE	10
BW	-1.9
WW	28
YW	42
MILK	17

We purchased a group of heifers from the DR Angus Dispersal sale in 2011 and kept the best ones that were A.I bred. This Mabel cow has breeding from Dale Davis, N Bar and Jorgenson programs and posts a 364-day calving interval. **Due 4/27/17 to Multi-sire.**



**V D A R Beauty 50 is the maternal great granddam of Lot 37 and granddam of Lot 38.**

## LOT 37 S R BEAUTY 398

BD: 3/26/2013

Reg #: 17690575

#Boyd New Day 8005  
**GDAR Game Day 449**  
 #G D A R Miss Wix 474  
 #Leachman Right Time  
**S R Beauty 502**  
 M H Beauty 723

#A A R New Trend  
 S V F Forever Lady 57D  
 #Tehama Band 207  
 G D A R Miss Wix 749  
 #N Bar Emulation EXT  
 Leachman Erica 0025  
 #D H D Traveler 6807  
 V D A R Beauty 50

CE	12
BW	-1.7
WW	36
YW	70
MILK	25

Here is a low-birth Game Day daughter from the Beauty family. We used Resource on our Game Day daughters and think that it will be a tremendous mating. 398 has a progeny record of BR:1/88 and WR: 1/106. She lost her 2016 calf to sickness. **Due 3/13/17 to S A V Resource 1441, heifer calf.**

## LOT 38 SRF BEAUTY 901W OF FCC

BD: 1/28/2009

Reg #: 16601814

#N Bar Emulation EXT  
**#Leachman Right Time**  
 Leachman Erica 0025  
 #D H D Traveler 6807  
**MH Beauty 723**  
 V D A R Beauty 50

#Emulation N Bar 5522  
 N Bar Primrose 2424  
 #Tehama Bando 155  
 Leachman Erica 8058  
 #Q A S Traveler 23-4  
 #Bemindful Maid D H D 0807  
 #A A R New Trend  
 #VDAR Revolution Beauty 375

CE	2
BW	2.3
WW	29
YW	57
MILK	21

**Owned by Finke Cattle.** A direct daughter of the legendary female producer Leachman Right Time. 901W was one of the original Angus females born here and her 6807 dam left many wonderful progeny both here and at Strommen Ranch. **Due 3/01/17 to S A V Resource 1441, heifer calf.**



**M H Beauty 723 is the dam of Lot 38, SRF Beauty 901W of FCC.**



**PHOTOS •** Photos of sale lots, dams and many of the support photos were primarily captured by Aaron or Sheyna. We are far from being professional livestock photographers, but we usually enjoy the experience – at least by the time we're done.





**LOT 39 • DR EMMA 1122**

**LOT 39 DR EMMA 1122**

BD: 4/9/2011

Reg #: 16985515

Sinclair Rito Legacy 3R9  
**Sinclair Memento 8RL4**  
Sinclair Lady 03S3 4465

Sinclair Mt Time 4P88  
**DR Emma 762**  
DR Bliss 340

#R R Rito 707  
Ideal 4465 of 6807 4286  
N Bar Shadow X4124  
Ideal 4465 of 6807 4286  
#N Bar Prime Time D806  
N Bar Lady Ida X2912  
Papa Romeo 8050  
DR Bliss 701

CE	-2
BW	1.8
WW	38
YW	64
MILK	23

Here is a really good cow we purchased out of the DR Angus Dispersal as a heifer calf. She has a progeny record a WR: 2/112 and YR: 2/108. She lost a calf to sickness in 2014 and raised a tremendous embryo bull calf in 2016 that weaned off at 712 pounds. She also maintains a 365-day calving interval. **Due 3/12/17 to S A V Resource 1441, heifer calf.**

**LOT 40 DR BLACKBIRD 157**

BD: 3/15/2011

Reg #: 16985495

Sinclair Rito Legacy 3R9  
**Sinclair Memento 8RL4**  
Sinclair Lady 03S3 4465

Sinclair Mt Time 4P88  
**DR Blackbird 770**  
DR Blackbird 9828 2122

#R R Rito 707  
Ideal 4465 of 6807 4286  
N Bar Shadow X4124  
Ideal 4465 of 6807 4286  
#N Bar Prime Time D806  
N Bar Lady Ida X2912  
#Papa Rito T Intense DHD 6844  
Papa Blackbird 9828

CE	2
BW	1.5
WW	28
YW	49
MILK	17

Here is another cow from the DR Angus dispersal that is carrying a Resource heifer calf. This low-birth female has a progeny record of BR: 4/93, with a 371-day calving interval. She is out of a cow that posted a WR: 2/102. **Due 4/6/17 to S A V Resource 1441, heifer calf.**

**LOT 41 GALE 193 OF MC CUMBER**

BD: 2/1/2011

Reg #: 17094499

#O C C Missing Link 830M  
**Mc Cumber Missing Link 9112**  
B Pride 7171 of Mc Cumber

LT Timberwolf 5014  
**Gale 841 of Mc Cumber**  
Gale 5001 of Mc Cumber

O C C Headliner 661H  
O C C Dixie Erica 946K  
Sitz JLS Emulation Ext 536P  
B Pride 134 of Mc Cumber  
#Wulffs Ext 6106  
L T Ethelda 3245  
#Leachman Right Time  
Gale 948 of Mc Cumber

CE	-1
BW	1.9
WW	34
YW	66
MILK	21

A Gale from the McCumber program that has a progeny record of WR: 3/104. She raised a 648-pound Resource ET heifer in 2016 and logs a 365-day calving interval. **Due 4/9/17 to Multi-sire, bull calf.**



**LOT 40 • DR BLACKKBIRD 157**





**LOT 43 S R ERICA ENERGY 140**

**LOT 42 S R FARAH 486**

BD: 3/29/2014

Reg #: 18021612

#Baldridge Kaboom K243 KCF  
**Connealy Thunder**  
 #Parka of Conanga 241  
 Rockin Horse Tailor Made 456  
**K N M Farah 125**  
 Feirings Ms Fahren S41

#Jauer 353 Traveler 589 27  
 Pleasanta of Conanga 736  
 #Bon View Bando 598  
 Partina of Conanga 6237  
 #H A Image Maker 0415  
 #CHK WGN Butterfly 807  
 D D A Fahren 21X  
 Feirings Miss Pioneer 859

CE	12
BW	-0.9
WW	34
YW	67
MILK	25

This female carries a lot of breed greats in her pedigree: Connealy Thunder, Image Maker, Bando 598, to name a few. She's carrying a first-cycle bull calf by Connealy Capitalist. Her dam has a production record of WR: 3/103. **Due 3/16/17 to Connealy Capitalist 028, bull calf.**

**LOT 44 S R BLACKCAP 192**

BD: 4/25/2011

Reg #: 17190473

#Sitz Alliance 6595  
**S R Alliance 908**  
 21 A R O Lass 824

#Sitz Traveler 8180  
 #Sitz Barbamare Jet 2698  
 Leachman Booster  
 Vermilion O Lass 6153  
 #D H D Traveler 6807  
 Alberda Queen Kimberly 222  
 #Rito 054 G D A R  
 Blackcap 013 of Mc Cumber

CE	3
BW	2.6
WW	38
YW	66
MILK	21

Blackcap 192 has a maternal pedigree loaded with breed legends. She has progeny record of WR: 2/111, with 367-day calving interval. Her dam posts a production record of WR: 10/104. **Due 4/7/17 to Multi-sire, bull calf.**

**LOT 45 S R BLACKCAP 304**

BD: 3/4/2013

Reg #: 17690531

#Sitz Dash 10277  
**Ox Bow Revival 1313**  
 Ox Bow Manor 933

#Sitz Upward 307R  
 Sitz Everelda Entense 2665  
 #K C F Bennett Total  
 #Ox Bow Manor 7105  
 #Sitz Alliance 6595  
 21 A R O Lass 824  
 #Alberda Traveler 416  
 Blackcap 109 of Mc Cumber

CE	7
BW	1.2
WW	48
YW	81
MILK	19

S R Blackcap 304 is a direct daughter of the female selling as Lot 44. This Revival daughter has an individual WR: 117 and is from a dam that has a progeny record of WR: 2/111. **Due 3/13/17 to Connealy Capitalist 028, heifer calf.**



**LOT 46 S R ENCHANTRESS 619**

**LOT 46 S R ENCHANTRESS 619**

BD: 3/7/2006

Reg #: 15602969

#Emulation N Bar 5522  
**#N Bar Emulation EXT**  
 N Bar Primrose 2424

#Rito 054 G D A R  
**L A Miss Enchantress 021**  
 #L A R Miss Lovana 628

#Emulation 31  
 Ankony 8F78 Lass 8F275  
 #Emulation 31  
 Primrose N Bar 9962  
 #C S U Rito 4114  
 #Blackcap Forever 485 G D A R  
 #Lovana  
 Farview Miss Enchantress 261

CE	3
BW	0.5
WW	25
YW	42
MILK	25

Here's another cow we really like. She has a production record of BR: 9/99 and WR: 9/103, with a 361-day calving interval. Her dam was a tremendous cow from the Luhman herd and had a progeny record of WR: 11/101. **Due 4/1/17 to S A V Resource 1441, heifer calf.**



Sunset on the ranch is one of our favorite times.



## LOT 47 S R POLLY 129

BD: 3/9/2011

Reg #: 17193183

O C C Focus 813F  
#O C C Paxton 730P  
O C C Blackbird 736K

S R Canyon 712  
S R Polly 969  
#M H Polly 817

#Basin Rainmaker 654X  
Dixie Erica of C H 1019  
#O C C Great Plains 943G  
O C C Blackbird 824G  
#Larks Canyon 74D4  
#Ideal 4555 of 7451 6200  
#Sitz Traveler 9929  
V D A R Polly 209

CE	1
BW	2.2
WW	40
YW	67
MILK	19

Here is a big-bodied, extremely easy-fleshing, massive Paxton daughter that is carrying the valuable A.I. service of XXP with a heifer calf. **Due 3/12/17 to Sinclair Emulation XXP, heifer calf.**

## LOT 48 S R SKY TEE LASS 159

BD: 3/30/2011

Reg #: 17103385

O C C Focus 813F  
#O C C Paxton 730P  
O C C Blackbird 736K

#21AR Outfitter 6032  
S R Sky Tee Lass 955  
S R Sky Tee Lass 708

#Basin Rainmaker 654X  
Dixie Erica of C H 1019  
#O C C Great Plains 943G  
O C C Blackbird 824G  
#O C C Magnitude 805M  
21AR Sara E802  
#Larks Canyon 74D4  
S R Sky Tee Lass 518

CE	5
BW	0.6
WW	43
YW	73
MILK	18

Another nice, moderate, easy-fleshing Paxton daughter that has a production record of BR: 4/98 and a WR: 4/101. She has stuck to her A.I. service every year and maintains a 370-day calving interval. **Due 3/14/17 to Sinclair Emulation XXP, heifer calf.**



**This 2-Year-Old son of Lot 49 and S A V Resource 1441 sold for \$7,000 in our 2016 Angus Bull Sale. His dam is ultrasound-safe with another bull calf by Resource for 2017.**

## LOT 49 K N M MAYFLOWER 041

## LOT 49 K N M MAYFLOWER 041

BD: 3/18/2010

Reg #: 16795740

#H A Image Maker 0415  
Rockin Horse Tailor Made 456  
#CHK WGN Butterfly 807

K N M Ambush 925  
K N M Mayflower 265  
K N M Mayflower 923

#Hero 6267 of R R 2418  
H A Rito Blackcap 9038  
#R R Ferdinand 758D  
CHK WGN Butterfly 604  
#High Valley 4C6 Ambush  
Oak Lane Mayflower 08  
#V D A R Traveler 722  
K N M Mayflower 464

CE	12
BW	-1.7
WW	26
YW	50
MILK	22

This low-birth Image Maker granddaughter is nice-fronted and smooth-made, deep and moderate. She had the lead-off 2-year-old bull in the 2016 Strommen Ranch Bull Sale and is due with a full brother in 2017. **Due 3/14/17 to S A V Resource 1441, bull calf.**



## LOT 50 S R POLLY 061

BD: 5/15/2010

Reg #: 16801137

#O C C Great Plains 943G  
S R Great Plains 821  
#Ideal 4555 of 7451 6200

#Sitz Alliance 6595  
S R Polly 804  
#SR Polly 323

#N Bar Emulation EXT  
Dixie Erica of C H 1019  
#Ideal 7451 of 8103 4465  
Ideal 6200 of 033 972  
#Sitz Traveler 8180  
#Sitz Barbaramere Jet 2698  
#O C C Emblazon 854E  
#M H Polly 817

CE	2
BW	1.9
WW	44
YW	76
MILK	23



LOT 50 • S R POLLY 061

## LOT 51 S R SARA 808

BD: 3/5/2008

Reg #: 16572800

#Sitz Traveler 8180  
Sitz Alliance 6595  
#Sitz Barbaramere Jet 2698

#O C C Emblazon 854E  
S R Sara 522  
21 A R Sara 802A

#G D A R Traveler 71  
Sitz Everelda Entense 1137  
3 Bar Spike 1766  
#Sitz Baramere Jet 155  
#D H D Traveler 6807  
Dixie Erica of C H 1019  
#Rito 9FB3 of 5H11 Fullback  
K M R Sara 430

CE	5
BW	1.6
WW	39
YW	69
MILK	23

808 is another example of the Alliance x Emblazon combination that has worked so well here. She posts a progeny WR: 7/104 and stems from a dam with a progeny record of WR: 9/100. **Due 4/27/17 to Multi-sire.**



*This son of 808 sold in our 2016 Angus Bull Sale.*

WE STRIVE TO PRODUCE:

*Hard-working,  
moderate-framed,  
easy-fleshing,  
maternally oriented  
Angus cattle.*



*S R Dorothy Ideal 824 is an O C C Great Plains 953G daughter that sells as Lot 22 in this sale.*



# BRED HEIFERS



**S A V Resource 1441**

## LOT 52 REICH RACHEL 572

BD: 03/18/15

Reg #: 18510852

Rito 707 of Ideal 3407 7075  
**S A V Resource 1441**  
S A V Blackcap May 4136

LT Right Time 7855 of EA  
**Reich Dixie 0207**  
Reich Dixie 772

#R R Rito 707  
Ideal 3407 of 1418 076  
#S A V 8180 Traveler 004  
#S A V May 2397  
#Leachman Right Time  
EA Emblynette 104  
#B C C Bushwacker 41-93  
Reich Dixie L100

CE	2
BW	2.4
WW	56
YW	106
MILK	28

**Owned by Reich Angus.** Outstanding maternal values in this daughter of the extremely popular A.I. sire SAV Resource 1441, backed by a dam who combines the breed-leading Pathfinder traits of Leachman Right Time and BCC Bushwacker 41-93 in her pedigree. In addition, her low-birth dam posts a progeny record of BR: 4/94, combined with %IMF: 3/102 and UREA: 3/106. **Due 3/4/17 to Connealy Reflection, bull calf.**

## LOT 53 REICH RACHEL 576

BD: 03/18/15

Reg #: 18510841

Rito 707 of Ideal 3407 7075  
**S A V Resource 1441**  
S A V Blackcap May 4136

#L T Bandwagon 3105  
**Reich Primrose 187**  
Reich Primrose 699

#R R Rito 707  
Ideal 3407 of 1418 076  
#S A V 8180 Traveler 004  
#S A V May 2397  
#Leachman Right Time  
L T Ms Vikings Value 0256  
#Nichols Extra H6  
Reich Primrose N84

CE	7
BW	0.8
WW	53
YW	99
MILK	32

**Owned by Reich Angus.** This low-birth daughter of Resource posted a personal BR: 91 along with UREA: 100 in the Reich program. Her dam combines the Pathfinder traits of LT Bandwagon 3105 and Nichols Extra H6. **Due 3/4/17 to Connealy Capitalist 028, heifer calf.**

## LOT 54 REICH RACHEL 588

BD: 03/19/15

Reg #: 18510886

Rito 707 of Ideal 3407 7075  
**S A V Resource 1441**  
S A V Blackcap May 4136

#S A V 8180 Traveler 004  
**#Reich Eota Lass 798**  
BT Eota Lass 6N

#R R Rito 707  
Ideal 3407 of 1418 076  
#S A V 8180 Traveler 004  
#S A V May 2397  
#Sitz Traveler 8180  
Boyd Forever Lady 8003  
#B C C Bushwacker 41-93  
BT Eota Lass 318L

CE	-6
BW	5.3
WW	63
YW	110
MILK	30

**Owned by Reich Angus.** Multiple generations of breed-leading AI sires in the pedigree of this Resource female who posted an impressive personal WR: 107, combined with a UREA ratio of 119. Her dam by Traveler 004 earned Pathfinder status posting a progeny record of WR: 7/105, YR: 4/106, and UREA: 6/108. **Due 3/4/17 to Connealy Reflection, heifer calf.**

## LOT 55 REICH RACHEL 5102

BD: 03/20/15

Reg #: 18510855

Rito 707 of Ideal 3407 7075  
**S A V Resource 1441**  
S A V Blackcap May 4136

S A V Alliance 6850  
**Reich Blackcap 9143**  
Reich Blackcap 7144

#R R Rito 707  
Ideal 3407 of 1418 076  
#S A V 8180 Traveler 004  
#S A V May 2397  
#Sitz Alliance 6595  
#S A V Priscilla 8104  
#B C C Bushwacker 41-93  
#Leachman Blackcap 0121

CE	2
BW	2.5
WW	53
YW	94
MILK	28

**Owned by Reich Angus.** A unique daughter of Resource posting a low BR: 97 and backed by a dam who traces to the Pathfinder dam Leachman Blackcap 0121. Her low-birth dam has a progeny record of BR: 5/98. **Due 3/4/17 to Connealy Reflection, heifer calf.**

## LOT 56 REICH RACHEL 5121

BD: 03/21/15

Reg #: 18425517

Rito 707 of Ideal 3407 7075  
**S A V Resource 1441**  
S A V Blackcap May 4136

Reich Final Answer 902  
**Reich Enchantress 289**  
Reich Enchantress 803

#R R Rito 707  
Ideal 3407 of 1418 076  
#S A V 8180 Traveler 004  
#S A V May 2397  
#S A V Final Answer 0035  
#Reich Miss wix 708  
#S A V 8180 Traveler 004  
Reich Enchantress 694

CE	6
BW	0.8
WW	58
YW	103
MILK	26

**Owned by Reich Angus.** Low birth with triple-digit growth in this daughter of Resource who has a pedigree line-bred to the popular and proven Pathfinder sire Traveler 004. Plus, she posted a personal BR: 91 and UREA: 112. Her dam is a granddaughter of the Pathfinder sire Final Answer and balances the progeny record of BR: 2/90 with UREA 1/112. **Due 3/4/17 to Connealy Reflection, bull calf.**





Basin Payweight 1682

## LOT 57 REICH RACHEL 5126

BD: 03/22/15

Reg #: 18510843

Rito 707 of Ideal 3407 7075  
**S A V Resource 1441**  
 S A V Blackcap May 4136

#S A V Final Answer 0035  
**Reich Annie 111**  
 Reich Annie 9147

#R R Rito 707  
 Ideal 3407 of 1418 076  
 #S A V 8180 Traveler 004  
 #S A V May 2397  
 #Sitz Traveler 8180  
 S A V Emulous 8145  
 #B C Matrix 4132  
 #Reich Annie 6127

CE	3
BW	2.1
WW	62
YW	113
MILK	30

**Owned by Reich Angus.** This high-growth Resource daughter records a YW EPD in the top 3% of the breed and also is in the top 15% of the breed for both \$W and \$B traits. Plus, she posted a personal WR: 100. Her dam sports a progeny record of BR: 3/99 and WR: 3/100. **Due 3/4/17 to Connealy Reflection, bull calf.**

## LOT 58 REICH PATRICIA 5187

BD: 03/30/15

Reg #: 18511433

#Basin Payweight 006S  
**Basin Payweight 1682**  
 21AR O Lass 7017

Reich Bandwagon 906  
**Reich Patricia 2101**  
 Reich Patricia 693

#Vermilion Payweight J847  
 Basin Lucy 3829  
 #HARB Pendleton 765 J H  
 21AR O Lass F24A  
 #L T Bandwagon 3105  
 Reich Malinda 775  
 #B C C Bushwacker 41-93  
 Reich Patricia N21

CE	8
BW	0.6
WW	58
YW	97
MILK	27

**Owned by Reich Angus.** A rare opportunity to find a direct daughter of the extremely popular Basin Payweight 1682 who posted personal BR: 91 and WR: 100 with an impressive %IMF ratio of 124. Her dam has a progeny record of BR: 2/94 combined with %IMF 2/114 and UREA 2/100. **Due 3/4/17 to Connealy Capitalist O28, bull calf.**

## LOT 59 REICH PATRICIA 5198

BD: 04/03/15

Reg #: 18511434

#Basin Payweight 006S  
**Basin Payweight 1682**  
 21AR O Lass 7017

#Vermilion Dateline 7078  
**Reich Patricia 2186**  
 Reich Patricia 988

#Vermilion Payweight J847  
 Basin Lucy 3829  
 #HARB Pendleton 765 J H  
 21AR O Lass F24A  
 #Connealy Dateline  
 #Vermilion Blackbird 5044  
 #B C Matrix 4132  
 Reich Patricia 61

CE	10
BW	0.1
WW	57
YW	101
MILK	26

**Owned by Reich Angus.** This daughter of the popular Basin Payweight 1682 offers an EPD profile with double digit CED and triple digit growth plus in the top 5% of the breed for \$B value and in addition, posted BR: 84 in the Reich program. Her productive dam has a progeny record of BR: 2/98, WR: 2/108, YR: 1/120, %IMF 2/105, and UREA 2/104. **Due 3/4/17 to Connealy Capitalist O28, heifer calf.**

## LOT 60 REICH LADY 506

BD: 03/04/15

Reg #: 18418517

#S A V Final Answer 0035  
**S A V Priority 7283**  
 #S A V Blackcap May 5530

BC Pure Pride 327d  
**Reich Lady 3222**  
 Reich Lady 1226

#Sitz Traveler 8180  
 S A V Emulous 8145  
 #B C C Bushwacker 41-93  
 S A V May 7238  
 #B C Lookout 7024  
 #B C Pure Pride 110 825J 327  
 LT Marathon 8880 of EA  
 Reich Lady 551

CE	6
BW	2.2
WW	58
YW	95
MILK	17

**Owned by Reich Angus.** This high-maternal female, sired by the popular and proven SAV Priority 7283, descends from a long line of productive females developed in this program and posted a low individual BR: 92. **Due 3/4/17 to Basin Payweight 1682, heifer calf.**

## LOT 61 REICH ANNIE 515

BD: 03/06/15

Reg #: 18418515

#S A V Final Answer 0035  
**S A V Priority 7283**  
 #S A V Blackcap May 5530

#BC Eagle Eye 110-7  
**Reich Annie 3213**  
 Reich Annie 029

#Sitz Traveler 8180  
 S A V Emulous 8145  
 #B C C Bushwacker 41-93  
 S A V May 7238  
 #B C Lookout 7024  
 #B C Pure Pride Erica D 110  
 #Mytty In Focus  
 #Reich Annie 6127

CE	4
BW	1.9
WW	62
YW	103
MILK	21

**Owned by Reich Angus.** This high-performance daughter of SAV Priority 7283 stacks three generations of proven and popular A.I. sires in her pedigree. She posted an impressive personal WR: 112, along with a UREA ratio of 102. She was raised by a two-year-old dam. **Due 3/4/17 to Basin Payweight 1682, heifer calf.**



# BRED HEIFERS

## LOT 62 REICH ERICA LADY 524

BD: 03/09/15

Reg #: 18418509

#S A V Final Answer 0035  
**S A V Priority 7283**  
#S A V Blackcap May 5530

#Connealy Thunder  
**Reich Erica Lady 337**  
Reich Erica Lady 1144

#Sitz Traveler 8180  
S A V Emulous 8145  
#B C C Bushwacker 41-93  
S A V May 7238  
#Baldridge Kaboom K243 KCF  
#Parka of Conanga 241  
#LT Territory 5824 of EA  
Reich Erica Lady 613

CE	0
BW	4.1
WW	60
YW	101
MILK	22

This daughter of SAV Priority 7283 offers a pedigree engineered for maternal excellence without sacrificing growth and performance posting an impressive individual WR: 109 among a 141 contemporaries. She also posted a %IMF ratio: 100, a UREA ratio: 115 and is produced by a two-year-old daughter of the breed-leading Pathfinder sire Connealy Thunder. **Due 3/4/17 to Basin Payweight 1682, heifer calf.**

## LOT 64 REICH MAJESTIC 552

BD: 03/15/15

Reg #: 18426271

#G A R Retail Product  
**Connealy Mentor 7374**  
#Executa of Conanga 939

#B C Matrix 4132  
**Reich Majestic 075**  
Reich Majestic 696

#G A R Precision 1680  
G A R Ext 4927  
#Jauer 353 Traveler 589 27  
#Exec of Conanga 6940  
#O C C Emblazon 854E  
CAF Pure Pride Ext 99  
#B C C Bushwacker 41-93  
Reich Majestic K39

CE	6
BW	1.5
WW	52
YW	89
MILK	21

A direct daughter of the high-maternal and proven Select Sires A.I. sire Connealy Mentor 7374 who posted a low BR: 97, a WR: 100 and she excelled with a %IMF ratio: 119. Her dam, by the Pathfinder sire Matrix, achieved a progeny record of BR: 3/96, WR: 3/103, %IMF: 2/123, and UREA: 2/102. **Due 3/4/17 to Connealy Capitalist 028, bull calf.**

## LOT 66 REICH MISS MAID 5257

BD: 04/14/15

Reg #: 18419263

#LT Territory 5824 of EA  
**Reich Territory 1155**  
#Reich Miss wix 708

#L T Bandwagon 3105  
**Reich Miss Maid 264**  
Reich Miss Maid 7119

#Sitz Tradition RLS 8702  
EA Lucy 141  
#B C Matrix 4132  
Reich Miss Wix 596  
#Leachman Right Time  
L T Ms Vikings Value 0256  
#B C C Bushwacker 41-93  
BT Miss Maid 83N

CE	8
BW	1.2
WW	39
YW	70
MILK	20

A granddaughter of the proven pathfinder sire Territory who posted a %IMF ratio of 106. Her low-birth dam balances BR 2@97 combined with %IMF 1@106 and stacks the Pathfinder sires LT Bandwagon 3105 and Bushwacker in her pedigree. **Due 3/4/17 to Basin Payweight 1682, heifer calf.**

## LOT 63 REICH BARBARAS 556

BD: 03/16/15

Reg #: 18425460

#S A V Final Answer 0035  
**S A V Priority 7283**  
#S A V Blackcap May 5530

#LT Territory 5824 of EA  
**Reich Barbaras 9162**  
Tokach Barbaras 3144

#Sitz Traveler 8180  
S A V Emulous 8145  
#B C C Bushwacker 41-93  
S A V May 7238  
#Sitz Tradition RLS 8702  
EA Lucy 141  
#B/R New Frontier 095  
Tokach Barbaras 7881

CE	11
BW	0
WW	54
YW	92
MILK	16

Double digit CED in this daughter of Priority backed by a high performance dam by the Pathfinder sire LT Territory 5824 of EA. She posted a low BR: 85 and her low-birth dam has progeny record of BR: 5/93. **Due 3/4/17 to Basin Payweight 1682, heifer calf.**

## LOT 65 REICH MALINDA 5118

BD: 03/21/15

Reg #: 18512411

#G A R Retail Product  
**Connealy Mentor 7374**  
#Executa of Conanga 939

#LT Territory 5824 of EA  
**Reich Malinda 956**  
Jaynbee Malinda 563P

#G A R Precision 1680  
G A R Ext 4927  
#Jauer 353 Traveler 589 27  
#Exec of Conanga 6940  
#Sitz Tradition RLS 8702  
EA Lucy 141  
Jaynbee Precision 745L  
Jaynbee Malinda 542

CE	2
BW	3
WW	52
YW	92
MILK	21

This higher-performing Connealy Mentor 7374 daughter posted a personal WR: 101 in the Reich program and also posted a UREA ratio of 118. Her dam, by the proven performance sire LT Territory 5824 of EA, logs a progeny record of UREA: 3/106. **Due 3/4/17 to Connealy Capitalist 028, bull calf.**



S A V Priority 7301



LOTS  
**67-70**

## STROMMEN RANCH BRED HEIFERS DUE APRIL 22-APRIL 30TH

These purebred Angus bred heifers will sell as a group. They are selling without registration papers, but are all registered Angus. Registration papers are available for \$250 per head. They have been vaccinated with CattleMaster FP5 and Spirovac VL5 and poured for lice. They've been ultrasounded for calving-date by Dr. Bierman of Mandan Veterinary Clinic, Mandan, N.D. They were exposed to WCR Right Time 4346B.

LOT	TAG	DOB	REG #	SIRE	MGS	DUE DATE
67	504	03/02/15	18352965	Connealy Thunder	O C C Emblazon 854E	4/30/17
68	551	03/12/15	18352993	S A V Resource 1441	S R Alliance 908	4/22/17
69	583	03/26/15	18353007	Ox Bow Revival 1313	GDAR Game Day 449	4/25/17
70	5107	04/03/15	18353018	Double R Bar Rito A116	O C C Paxton 730P	4/27/17

LOTS  
**71-81**

## STROMMEN RANCH BRED COWS DUE APRIL 25TH-MAY 8TH

These cows will sell in groups of 5 or more with a numeric gate cut, starting with Lots 71-75. They are selling without registration papers, but all are registered Angus females. Registration papers are available for \$250 per head. They have been vaccinated with CattleMaster FP5 and Spirovac VL5 and poured for lice. They've been ultrasounded for calving-date by Dr. Bierman of Mandan Veterinary Clinic. These cows were in a multiple-sire pasture with a son of Rito 7075 and a son of Ox Bow Revival 1313.

LOT	TAG	DOB	REG #	SIRE	MGS	DUE DATE
71	427	03/10/14	18021606	Connealy Thunder	21AR Outfitter 6032	4/30/17
72	435	03/11/14	18021622	Connealy Thunder	21AR Outfitter 6032	5/05/17
73	453	03/15/14	18012178	S A V Resource 1441	Sinclair Extra 4X13	5/02/17
74	479	03/27/14	18012136	S A V Resource 1441	S R Alliance 908	4/27/17
75	326	03/09/13	17690546	GDAR Game Day 449	Sitz Alliance 6595	4/27/17
76	383	03/19/13	17690572	Ox Bow Revival 1313	O C C Paxton 730P	4/27/17
77	3204	03/18/13	17690587	O C C Emblazon 854E	Papa Durabull 9805	5/02/17
78	143	03/11/11	17114985	21AR Outfitter 6032	O C C Broadside 876B	4/30/17
79	047	03/31/10	16801130	21AR Outfitter 6032	O C C Broadside 876B	5/08/17
80	070	03/29/10	16795735	Rockin Horse Tailor Made	K N M Abundance 906	4/26/17
81	498	04/01/14	Pending	Multi-Sire	Sitz JLS Emulation EXT	4/25/17

### REF **A** DOUBLE R BAR RITO A116

BD: 01/09/13

Reg #: 17431062

#R R Rito 707  
**Rito 707 of Ideal 3407 7075**  
Idel 3407 of 1418 076  
  
#S A V 8180 Traveler 004  
**S A V Emblynette 5472**  
#S A V Emblynette 7260

Rito N Bar	
Eriskay of Rollin Rock 3	
#Ideal 1418 of 8103 4286	CE 8
Ideal 076 of 692 8375	BW 1.1
#Sitz Traveler 8180	WW 53
Boyd Forever Lady 8003	YW 91
#N Bar Emulation EXT	MILK 20
#S A V Emblynette April 1509	

### REF **B** S R REVIVAL 303

BD: 03/04/13

Reg #: 17694084

Sitz Dash 10277  
**Ox Bow Revival 1313**  
Ox Bow Manor 933  
  
L T Bandwagon 3105  
**S R Beauty 117**  
S R Beauty 609

#Sitz Upward 307R	
Sitz Everelda Entense 2665	
#K C F Bennett Total	CE 13
#Ox Bow Manor 7105	BW -1.9
#Leachman Right Time	WW 46
L T Ms Vikings Value 0256	YW 79
#S A V 8180 Traveler 004	MILK 26
MH Beauty 16	

Service sire for Strommen Ranch multi-sire bred cows and Lots 71-81.

Service sire for Strommen Ranch multi-sire bred cows and Lots 71-81.

### REF **C** WCR RIGHT TIME 4346B

BD: 10/04/14

Reg #: 18168522

*Reference sires for  
Lots 67-81*

#N Bar Emulation EXT  
**#Leachman Right Time**  
Leachman Erica 0025  
  
O C C Jet Stream 825J  
**O C C Dixie Erica 775T**  
O C C Dixie Erica 903E

#Emulation N Bar 5522  
N Bar Primrose 2424  
#Tehama Bando 155  
Leachman Erica 8058  
#O C C Emblazon 854E  
O C C Juanada 968G  
O C C Candor 763C  
O C C Dixie Erica 799B

CE	8
BW	.8
WW	38
YW	65
MILK	19

Service sire for Strommen Ranch bred heifers, Lots 67-70.



# SIMANGUS™ HEIFER CALVES

LOTS  
**101-120**

## **LOTS 101-120 20 COMMERCIAL SIMANGUS HEIFERS**

This select group of commercial SimAngus™ heifer calves comes from our embryo recipient herd. These will be the top-of-the-crop stock with no heifers retained. These heifers are 1/4 to 1/2 Simmental. This commercial herd has more than 35 years of A.I. breeding, with most recent Angus bloodlines being BC Matrix 4132, LeMar Dakota Gold 18T, Sinclair Extra 4X13, TC Grid Iron 258, and Hoover Dam. Recent Simmental bloodlines used in this recip herd have been Hook's Shear Force 38K, SRS Fortune 500 and Nichols Legacy G151, to name a few.



*BC Matrix*



*Shear Force*



*Hoover Dam*



*Dakota Gold*

## **STROMMEN RANCH GOAL: BALANCE**

Chasing fads or using one-trait selection is a really good way to hurt the important traits we all need to survive in the beef industry. The important traits every cowherd needs are fertility, longevity and fleshing ability, as well as sound feet, legs and udders. It is our intention to breed cattle that excel at certain traits, but not at the expense of other important traits.

- We want fleshing ability, but not at the expense of fertility.
- We want cattle to perform, but not to an extreme that it diminishes the cows' ability to breed back and maintain her condition in our environment.
- We want to continually improve weaning weights, but not with the expense of added input cost.
- We want cattle with acceptable carcass merit, but not at the expense of maternal traits.
- We select cattle that are moderate in frame, but we demand that they perform and have ample muscle.

This all sounds like a perfect game plan, but is really a juggling act of sorts. We do extensive research and appraise lots of cattle so that we can make the best-informed decision about the genetics we bring in to keep our program moving in the right direction.

**By taking a balanced approach to genetic improvement, we hope to manage our risk – and help customers manage theirs.**

# **DVAuction**

**www.dvauction.com**

We'd love for you to join us in person, but if you cannot be at Kist Livestock Auction on Nov. 18, 2016, please join us online at [www.dvauction.com](http://www.dvauction.com), where you can watch videos of the offering beforehand and, on sale day, bid on and purchase lots. Here's how:

### **Visit [www.dvauction.com](http://www.dvauction.com) and Register!**

- 1) Create an account at [www.dvauction.com](http://www.dvauction.com) under the "create new account" tab.
- 2) Apply for bidding by clicking "apply for bidding" in the upper left corner of your screen at least 24 hours prior to the auction.
- 3) Tune into the sale and make your purchase!

For general questions, please contact the  
DVAuction Office directly  
(402) 316-5460 or [support@dvauction.com](mailto:support@dvauction.com)

\*High Speed Internet Access Required





## ABOUT OUR SALE PARTNERS



### *Finke Cattle*

#### **Todd & Kelly Finke**

Berthold, N.D.  
(701) 240-7711

Fourth-generation ranchers Todd and Kelly Finke own and operate Finke Cattle. The family raises registered Simmental, SimAngus™ and Angus cattle. Raising functional cattle that thrive in the Northern Plains has been the primary focus for the Finke family since Todd's Great Grandparents Hilda and Christian Finke each homesteaded ranches in 1900 and 1901, respectively. In 1972, Todd's parents, Roger and Susan Finke, launched the family's registered Simmental seedstock business. In 2007, with the purchase of M H Beauty 723 from Strommen Ranch, Todd and Kelly added registered Angus cattle to the operation. Today, the Finkes aim to produce moderate-framed, deep-bodied, easy fleshing, no-nonsense females and powerful bulls. They market their bulls through the Edge of the West sale in Mandan, N.D., on Feb. 13, 2017.

Their ranch is nestled in the beautiful, wind-swept plains of northern North Dakota, near the town of Berthold and is adjacent to the Laurentian Divide, which splits the direction of water flow in eastern and southern Canada from that of the northern Midwestern United States. Todd and Kelly represent the fourth generation to call the ranch home and they're proud to be raising the fifth generation of Finke cattle enthusiasts, Carter, Abby and Anna.



TODD & KELLY FINKE  
CARTER, ABBY & ANNA

### *Reich Angus*

#### **Mardee Reich**

Zap, N.D.  
(701) 880-0422

Reich Angus is a family-owned operation located in West-Central North Dakota. Their ranch sets along the Knife River and their cattle graze largely on native prairie grasses for all but just a couple of months in the winter. During the coldest of the winter months, the cattle are brought closer to home and supplemented with hay until after calving in March and April.

The Reichs share our breeding philosophy: producing females that will have a moderate mature frame size with the capacity and mothering ability to excel in a tough, Northern Plains environment. They expect their cows to hold their condition while consistently weaning off a heavy calf without the help of a creep-feeder. They place high priority on fertility, udder quality, natural thickness, good disposition and sound structure. Their cattle are bred to be problem-free. Through intense culling pressure, an extensive AI program and performance testing, their herd continues to improve every year. They host an annual production sale at their ranch, Feb. 18, 2017.

Mardee Reich and her kids Kaydee and Will are carrying on the program legacy she began with her late husband Jack and son, Vander.



MARDEE REICH  
KAYDEE & WILL





## REFERENCE SIRES



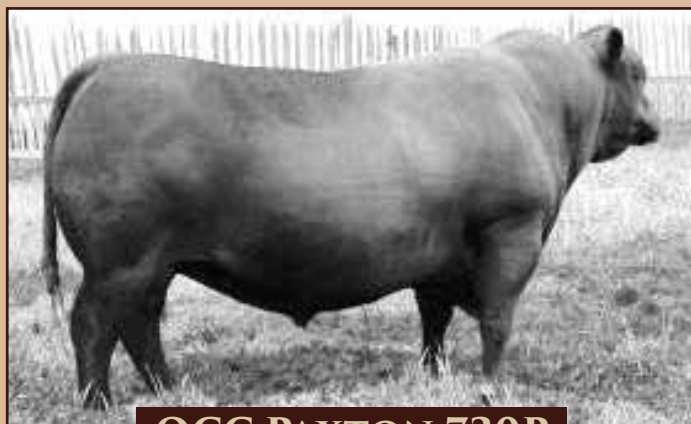
**SITZ ALLIANCE 6595**



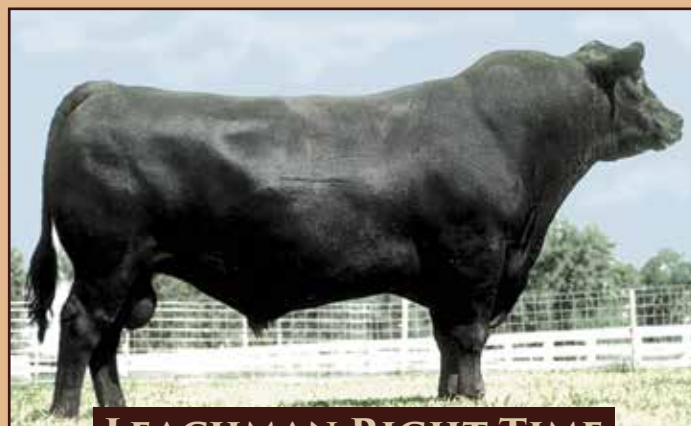
**OCC GREAT PLAINS 943G**



**BCC BUSHWACKER 41-93**



**OCC PAXTON 730P**



**LEACHMAN RIGHT TIME**



**OCC EMBLAZON 854E**



# A.I. SERVICE SIRES



**SAV RESOURCE 1441**



**CONNEALY CAPITALIST**



**SINCLAIR EMULATION XXP**



**BASIN PAYWEIGHT 1682**







## A FEW OF OUR FAVORITE RANCH SCENES FROM 2016





*These proven, balanced, female-makers are the backbone of our cowherd.*



IT BANDWAGON 3105



N BAR EMULATION EXT



OCC EMBLAZON 854E



OCC GREAT PLAINS 943G



LEACHMAN RIGHT TIME



GDAR GAME DAY 449



CONNEALY THUNDER



BCC BUSHWACKER 41-93



SITZ ALLIANCE 6595



OCC PAXTON 730P



ZIAR OUTFITTER 6032



LARKS CANYON 74D4

Our herd dates back to 1942 when Aaron's grandfather, Ernest Strommen, bought his first registered Angus female. His herd consisted of moderate-framed, highly-fertile, low-input cattle that calved with little assistance and produced good milk in a grass-based environment.

In March, we will calve 280 head, including 120 commercial females used in our embryo transplant program. Our Angus females have been selected for their fleshing ability on native range, fertility, longevity and sound udder and leg structure. Our cattle must survive – and thrive – in a low-input, grass-based environment of the Northern Plains.

We have no feed base and choose to not put up feed. Every acre of this ranch is grazed and we purchase all of the supplemental feed we need to get through a typical North Dakota winter. We don't use corn silage or liquid supplements.

This situation has quickly taught us the value of managing our natural resources so that our cattle can graze quality, unharvested forages well into the winter. It has reinforced the value we place on cattle that successfully convert grass and forage into pounds of beef.

We invite you to join us for our Angus Bull Sale, Feb. 25, 2017, starting at 3 p.m. at the ranch, Fort Rice, ND. The bulls will be on display and are available for viewing at the ranch anytime.



*Visitors are always welcome! Videos and catalog will be posted online.*

**Aaron & Sheyna Strommen • 701-290-7983 (Cell) • 701-445-2020 (Home) • [www.StrommenRanch.com](http://www.StrommenRanch.com)**

**f Connect with us on facebook: [www.facebook.com/StrommenRanch](http://www.facebook.com/StrommenRanch)**





Aaron & Sheyna Strommen  
6485 County Road 80  
Fort Rice, ND 58554

*Selling every cow  
5 years and older.*

# NOVEMBER 18, 2016

KIST LIVESTOCK AUCTION • MANDAN, N.D.

**100+** 65 Bred Cows  
20 Bred Heifers  
20 SimAngus™  
Heifer Calves  
**HEAD SELL**

