

# The Courier-Journal

A GANNETT COMPANY

July 23, 2015



Jewelry In Candles  
makes the biggest  
flame of all when an  
employee leaves a



*Jewelry*  
IN  
CANDLES

We do not want to make the headlines of our local or national newspaper, therefore, we welcomed...

**Tom Carroll**  
**Fire Inspector**  
**Jeffersontown Fire Station**  
**July 23, 2015**



*Jewelry*  
IN  
CANDLES

## PURPOSE OF REGULAR FIRE INSPECTION

- Required by OSHA every two years
- Management responsibility to maintain a safe environment for employees and visitors
- Understanding + Preparation = Prevention

*No matter how many candles and tarts we sell, those highlights would be diminished if we had a serious injury or fatality...*



## Front Office



*Jewelry*  
IN  
CANDLES

- Fire extinguisher not hung up; should be mounted 3 feet off the floor
- **Has been resolved**



## Front Office



*Jewelry*  
IN  
CANDLES

- Fire inspector concerned that door can be locked and egress is prevented should an evacuation occur
- **Will sound fire alarm during August Safety Month; will verify that doors unlock**





# Production Mix Room



*Jewelry*  
IN  
CANDLES

- Fire extinguisher directional sign needs to be removed
- **Not resolved; to be removed by 7/31**



# Inventory



*Jewelry*  
CANDLES

- No issues found...Inspector commented that it was important to keep fire doors closed when not in use





# Shipping



*Jewelry*  
IN  
CANDLES

- Elevator has no working phone line; elevator inspection is coming up in August 2015
- **Not resolved; currently working on installing Internet phone line within next 30 days**



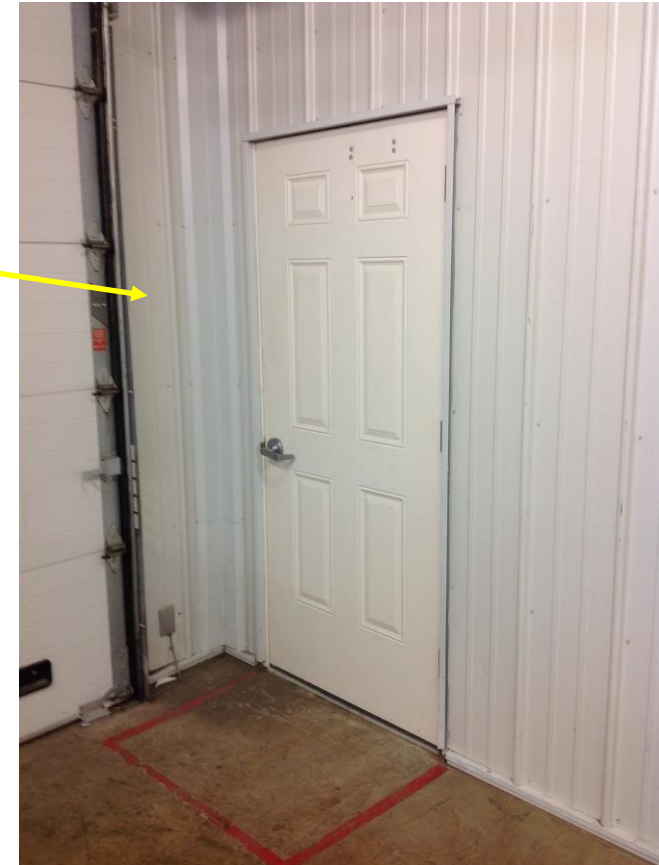


# Shipping



*Jewelry*  
IN  
CANDLES

- Inspector gave JIC a compliment on how the elevator electrical closet (inside and out) were so clean due to most organizations failing this part of the inspection

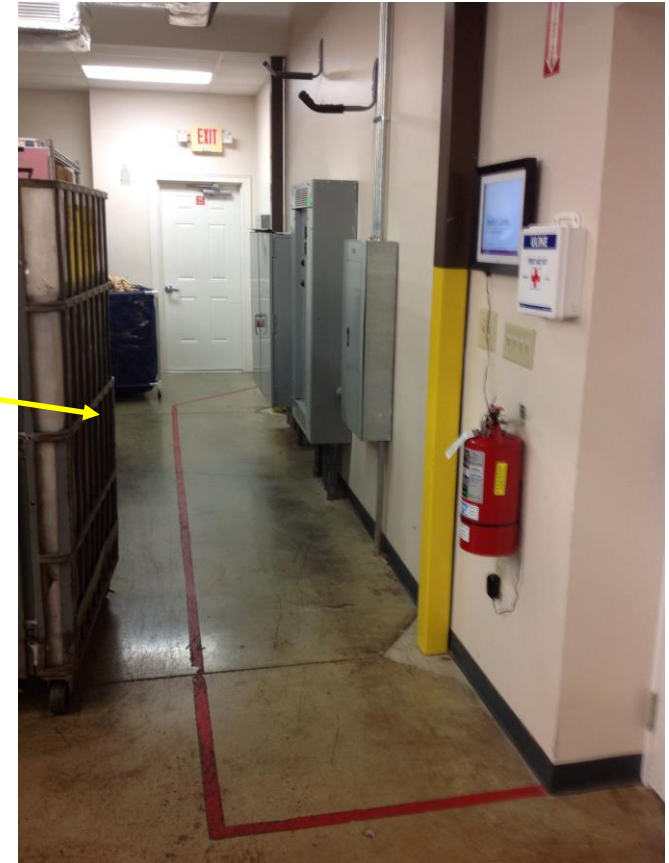


# Shipping



*Jewelry*  
IN  
CANDLES

- Inspector gave JIC a compliment on how the 3 foot radius was clear of obstructions





## Second Floor



*Jewelry*  
IN  
CANDLES

- Inspector was concerned about the items close to air handler; preferred a 3 foot clearance radius
- Area has been cleaned up, whereby a 3 foot clearance has been created and red marker tape put on the floor as a visual reference





*Jewelry*  
IN  
CANDLES

## SUMMARY REVIEW

- Overall, inspector was very pleased with what he saw...listed suggestions
  - ☐ To preserve emergency lighting power supply, test for 30 seconds monthly and 1.5 hours every quarter
  - ☐ Check fire extinguishers monthly
  - ☐ Keep fire doors closed when not in use
  - ☐ Have Simplex sound fire alarm and check to make sure door in Production unlocks