

Additional opportunities to  
advance your skills!



## KIFA's Spring Drawing & Painting Series

Instruction, outings, showings  
and fun in capturing nature's  
essence!

### *“OnLocation”*

Every week we take to the outdoors  
with various instructors at different  
locations on the western and eastern  
shores. At Goshen Farm and Atria  
Manresa we will have receptions to  
show works, even in progress.

All is media welcome; bring your own  
supplies.

\$10 / \$15 per session  
(Members/Nonmembers)

\$30 / \$50 On Location Series Pass  
Provides 4 sessions for the price of 3  
and includes entry for the show  
receptions!

*Dates and locations will be posted on website.  
Carpools will leave from KIFA leave in time to  
arrive for starting time at the location. On  
rainy days we may take to the studio*

.....

### *Summer Reflections Show*

August 30 - September 30  
Open to all to exhibit your summer  
works for the month of September.

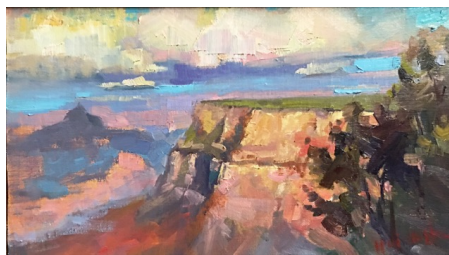
## *“Paint Stevensville”* *and surrounds of Kent Island*

### *Our Judges*

#### **KEN KARLIC**

Ken's watercolors can best be described as sophisticated chaos, as an accurate drawing gives way to a spontaneous painting to create a beautiful mess. He's interested in how something feels, and enjoys painting quickly to create works that may be experienced slowly. Ken is a national award-winning artist, teaches at Chesapeake Fine Art Studio in Stevensville MD, and is a partner in the graphic design firm Splice Design Group with clients including the Guggenheim Foundation. Ken is represented in several galleries from Baltimore to New York, and is a member of the Mid-Atlantic Plein-Air Painters Association (MAPAPA), a Signature Artist Member of Baltimore Watercolor Society, and a member in the Annapolis Watercolor Club. He lives and works in Bel Air.

*Ken will be judging the four-day event.*



#### **HAI-OU HOU**

Widely exhibited nationally and internationally Hai-Ou studied at the Central Institute of Fine Art and Design in Beijing where she was born. After immigrating to the U. S. she received her Master of Fine Arts from Towson University. Her works hang in many museum, corporate and private collections. Recent awards include New Tang Dynasty for Figure Painting, numerous Plein Air and Quick Draw awards in Sedona, Laguna, Curacao Telluride, Paint Annapolis, Plein Air Easton and more. She established the Chesapeake Fine Art Studio which feature renown teachers in many painting media. She is a member of

*Hai-Ou will be judging the Quick Draw event.*

## THIRD ANNUAL *“Paint Stevensville”* *and surrounds of Kent Island*

May 31 - June 3, 2017

Supported by the Queens Anne's County for  
Historic Stevensville  
Arts & Entertainment District



## “Paint Stevensville” and surrounds of Kent Island

### WEDNESDAY, THURSDAY, FRIDAY & SATURDAY,

#### MAY 31 - JUNE 3, 2017

Be a part of four days of drawing and painting in and around Kent Island and the historic Stevensville area with views of architecture, gardens, streetscapes, water and marsh.

KIFA encourages beginners and accomplished artists alike in a non-juried event in diverse media of acrylics, oil, watercolor, pastels and drawing.

#### CASH AWARDS & PRIZES

Awards for “Excellence”, “Best in Show”, and “Youth Best in Show” based on the criteria that best captures the “feeling of the day”. Prizes for Honorable Mentions.

Categories in Oil/Acrylics, Pastels, Watercolor, Drawing to include “Nocturnal” art will be determined by the Judges.

*Winners will be featured (without entry fee) in our Galleries for the month of June.*

#### “Paint Stevensville” Exhibit

##### JUNE 3 - 25, 2017

In celebration of Spring, this exhibit is open to all those who have participated in in our Plein Art events and studio instruction. All works must be suitably framed. Entry fees for one piece is \$15 and up to three pieces for \$20 for Members and \$25 for NonMembers.

KIFA commission is 25% of the sales. The Artists are to pick up their artwork June 26 from 3:00 to 6:00 p.m. or call Maureen Wheatley to make other arrangements.

*Applications available online and at Paint Stevensville Registration.*

#### A Very Special Thank You to our Sponsors!!

##### Chesapeake Fine Art Studio

609 Thompson Creek Road  
Stevensville

##### Art Things Inc.

2 Annapolis Street  
West Annapolis



## 2017 Event Calendar

### Wednesday, May 31

8 - 9 a.m. **Early Registration\*** allows for an optional day of painting. Have paper/canvas stamped, pick up information packet, and start painting!

6:00 p.m. **Welcoming Registration Reception** for the Artists\* held at the Kent Island Federation of Arts. If artists not done so, they can check in, can get their paper and canvas stamped, and pick up their information packet.

### Thursday, June 1

7:30 - 9:00 **Event Registration.** Artists paint all day on **Kent Island and surrounding area** as designated on the Map. **Nocturnal painting** at the Kent Narrows.

6:30 p.m. Artists return to KIFA for a Light Eastern Shore dinner.

### Friday, June 2

Artists paint all day. Artists may choose more **Nocturnal painting** of the bay or Historic Stevensville.

### Saturday, June 3

Artists continue to paint.

#### Quick Draw Competition – Artists Paint Historic Stevensville

10:30 - 11:00 Quick draw artists register in downtown area.

11:00 - 1:00 Artists paint against the clock in the Historic District

1:30 Judging of Quick Draw works. Works on canvas must be framed or on have a 1” “wrap.” Works on paper must be matted and framed.

2:00 - 3:30 **Off-the-Easel** sale near Rustico's Restaurant

#### “Paint Stevensville” Artists

4:30 Artists return to KIFA with their Plein Air works from the past 4 days to be judged. Each artist is allowed a 3’x6’ standard to hang additional pieces for the Wet Paint Sale.

5:00 –6:00 Judging of Artwork in the Gallery, artists are asked to remain outside KIFA’s Gallery during this time. Artists may exhibit these pieces at KIFA for the month of June.

6:00 – 8:00 **Wet Paint Sale** Artists are to remove their additional sale pieces at the end of the sale.

\* Artists will be given maps in their packets at registration designating prime areas to paint. All artists must have their canvases and paper stamped at KIFA 405 Main Street, Stevensville.

### ENTRY FEES

#### Full Program

\$35 Members/ \$45 NonMembers

#### Quick Draw Only

\$10

### KIFA MEMBERSHIPS

\$15 Youth/College

\$35 Senior 65+

\$40 Individual

\$45 Family

### Our Chairperson

**Maureen Wheatley**

Email: [reeniart@gmail.com](mailto:reeniart@gmail.com)

*Details and updates will be found on our website!*

Kent Island Federation of Arts, Inc.  
Main Street, Stevensville, Maryland 21666

Tel: 410-643-7424405

Email: [info@kifa.us](mailto:info@kifa.us)

Website: [www.kifa.us](http://www.kifa.us)

