
The Links Connector

New Leadership for 2012 - 2014

New Leaders have been elected for the South Bend Area (IN) Chapter of The Links, Incorporated for the 2012 - 2014 term

Elections were held at the April Meeting of the Chapter for the next two-year term. The officers elected for the 2012-2014 Term are: Janice Hall, President; Ruth Miles, Vice President; Tina Patton, Secretary; Ida Watson, Treasurer; and Rosamond (Roz) Byrd, Financial Secretary. The President will be making other facet and committee appointments later in the term.



President-elect Janice Hall

This promises to be a very active, functional, and worthwhile term of service by our new leadership. President-Elect Hall takes on the challenge with much enthusiasm, desire, and dedication. Our Strategic Plan, developed under the direction of our outgoing President, Tina Patton, will provide the roadmap needed to move our chapter forward in the right direction.

The South Bend Area (IN) Chapter is now in its 22nd year of operation and has had many successful events in its history under the direction of seven presidents: Lillian Bell-Gaines, Myrtle Wilson, Joyce Stith, Otha Reese, Ruth Miles, Virginia Calvin, and Tina Patton. Our eighth president, Janice Hall will carry on in their footsteps. There were twenty-four charter members that got it all started in April of 1990. Since then, the chapter has provided many community services and fundraising activities. A relationship was established with the YWCA of St Joseph County and was instrumental in furnishing a room in the YWCA's new facilities and has provided many activities at the YWCA to broaden the knowledge and experiences of the residents there. The Chapter has been successful in providing enriching entertainment to the community; such as: The Boys Choir of Harlem, three Gospelfests, Annual Holiday Brunches, Annual Charitable Chefs, and Salsa Parties. Other service activities have included: Mother's Day Concerts, Art Poster Contests, Breakfast/Pancake Forums, Pen Pal and Friendship Boxes to Africa, Volunteer Reading Programs, Health and Wellness Programs, Youth Symposiums, and Math and Science Academy. The challenge is before us to continue serving our community.

PAST PRESIDENT TINA PATTON SPEAKS . . .



Links Calvin, Reese, Watson, Wilson, (seated), Patton and Harris (standing), represented the South Bend Area (IN) Chapter at the 2011 Central Area Conference in St. Louis, Missouri on June 29, 2011 through July 2, 2011.

The Memorial Service was held at 8:00 a.m., Thursday morning with members wearing uninterrupted white to honor and remember those Link members, Connecting Links, and Heir-O-Links who had passed since the last conference two years ago. Our Link sister, Goldie Ivory was honored with a rose being placed in the vase when her name was called.

The 1st Plenary Session started at 9:45 a.m. on Thursday. After the Links Pledge and Links Song, greetings were given by the Area Directors and Immediate Past Area Directors from the other areas. This was followed by the Seating of the Delegates. Our President, Link Tina Patton, was in her assigned seat, with our Alternate, Link Otha Reese, seated in the Alternate section. Link Teree gave her "State of the Central Area Report."

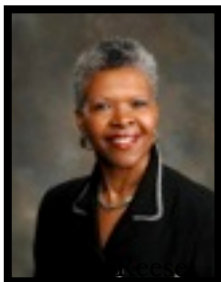
The Legacy Luncheon followed with the Legacy Address given by the 14th National President, Gwendolyn B. Lee from the South Suburban Chicago (IL) Chapter. This is the luncheon where hats were on parade: big hats, small hats, all color hats, straw hats, cloth hats, cloth wraps, feather hats. It was a beautiful sight to see. Take a look them in this newsletter.

The Plenary Session III was held on Friday morning at 9:15 a.m. Link Margot J. Copeland, President, The Links, Incorporated, Cleveland (OH) Chapter gave the "State of the Organization" Address. She gave an inspiring speech; one that should be shared with every Link member.

The Civic Luncheon followed, where again hats were on parade. Link Margot gave the Keynote Address. Next was the Award Presentations where chapters won awards for National Trends and Services, International Trends and Services, Services to Youth, and The Arts. Corporate Recognitions were given by Link Teree.



THE 2012 ANNUAL CHARITABLE CHEF - APRIL 28.2012



The 2012 Annual Charitable Chef was held on Saturday, April 28, 2012, at the Cove in the Upper Deck of the Stanley Coveleski Regional Stadium in South Bend, Indiana. Otha Reese chaired this committee along with Virginia Chism, Ruth Miles, and Rosamond Byrd.

Charitable Chef was the brainchild of a former South Bend member who visited a Memphis, Tennessee chapter and observed a similar event. She brought the idea back to the South Bend Chapter. Since then, the Charitable Chef events have been very successful, giving the Connecting Links the opportunity to show off their culinary skills. For the first time instead of regular desserts, an ice cream station, with all the trimmings was set up. Guests could add their favorite toppings on their choice of ice cream. This station was a big hit. There was a long line waiting to taste this treat. Another added feature was an hors d'oeuvres station with veggies and cheese. Other stations included vegetables, potatoes, salad and meats.

A message from our President:

Sister Links, I want to thank everyone for a job well done on Saturday at the Charitable Chefs event. The event included new and different items like hors d'oeuvres, the set menu and the ice cream bar which we believe everyone enjoyed. The venue was great overlooking the baseball stadium giving the ambiance and excellence that our guests are accustomed too. A special thank you to everyone on the Charitable Chef committee led by Link Reese. You all were great at pulling us all together.

Although this was the last major event of the fiscal year, we still have much to do this summer to get the new members ready for Linkdom. I'm sure President-Elect Hall will appreciate as much help as everyone can provide.

--Tina Patton



Members Wilson, Miles, and Reese chat together.

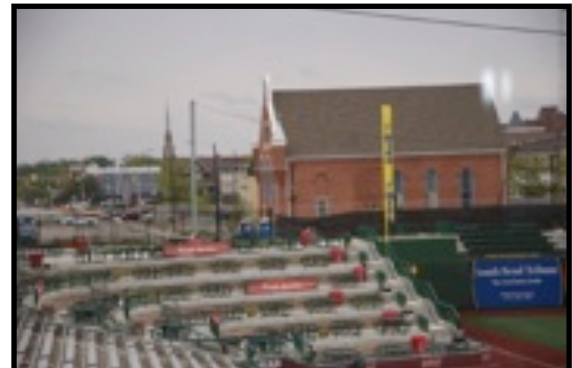
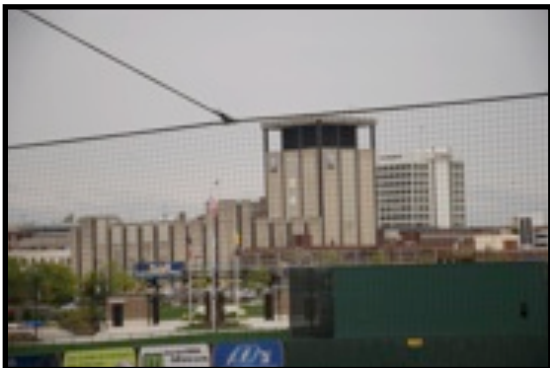


Links Wilson and Chism share a moment.

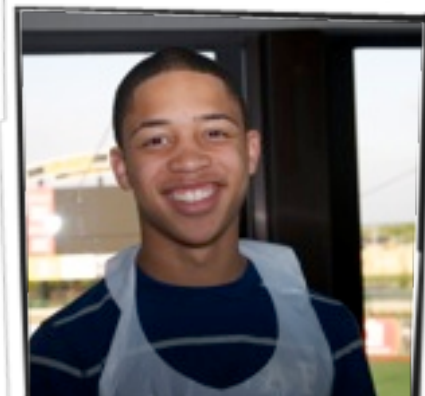


Link and Connecting Link Patton prepare the ice cream station.

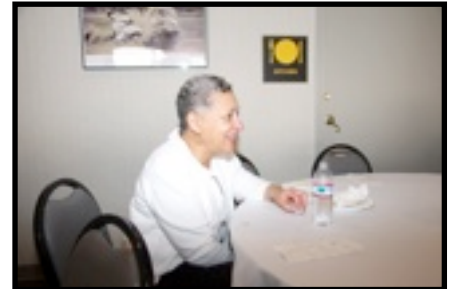
OVERLOOKING THE SILVER HAWKS' BALLPARK AND THE CITY AT THE 2012 CHARITABLE CHEF



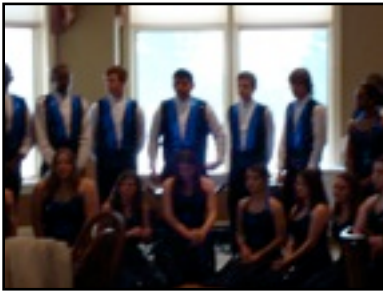
**CONNECTING LINKS OR DESIGNEES SERVING THE FOOD AT THE
2012 CHARITABLE CHEF**



**ENJOYING THE FOOD AND EACH OTHER'S COMPANY
AT THE 2012 CHARITABLE CHEF**



A LOOK BACK AT SOUTH BEND CHAPTER ACTIVITIES IN RECENT YEARS



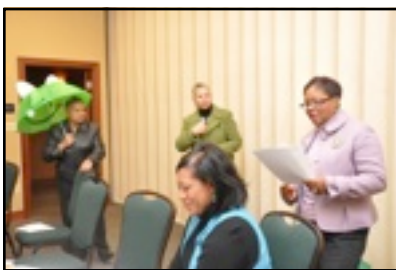
Holiday Brunch 2008



Holiday Brunch 2009



Holiday Brunch 2011



Umbrella Programming 2011



Alumnae Honors, 2011



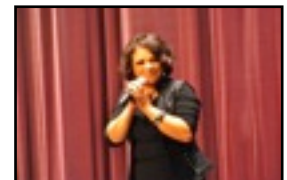
Health Facet Program, March 2011



Heart Month, February 2012



Meet and Greet, October 2011



Afternoon Tea, October 2011



Finance Committee Meeting,
August 2011

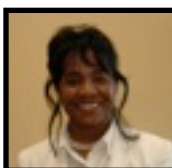


Charitable Chef, 2006

**THE SOUTH BEND AREA (IN) CHAPTER
LINKS OFFICERS - 2010-2012**



President - Tina Patton
Member Since 2000



Acting Vice President - Teresa Phillips
Charter Member - 1990



Recording Secretary - Leslie Wesley
Member Since 2003



Financial Secretary - Joyce Stith
Charter Member - 1990



Treasurer - Imogene Harris
Member Since 2006



Program Chair - Myrtle Wilson
Charter Member--1990

**THE SOUTH BEND AREA (IN) CHAPTER
LINKS OFFICERS - 2012-2014**



President - Janice Hall
Member Since 2006



Vice President - Ruth Miles
Member Since - 1993



Recording Secretary - Tina Patton
Member Since 2000



Financial Secretary - Roz Byrd
Charter Member - 1990/2003



Treasurer - Ida Watson
Member Since 2006



Immediate Past President - Tina Patton