


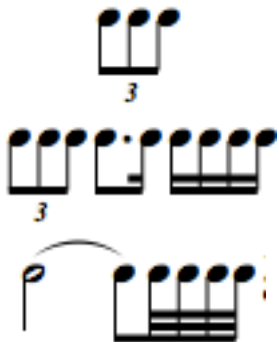
# VARIATIONS ON “SCARBOROUGH FAIR”

Calvin Custer

<p><u>KEYS</u></p> 	<p><u>GRADE</u></p> <p>3</p>		<p><u>PERCUSSION REQUIREMENTS</u></p> <p>Timpani Bells Vibraphone Chimes Piano Snare Drum Bass Drum Crash Cymbals Suspended Cymbal Triangle Small Gong</p>
<p><u>GENRE</u></p> <p>Theme and Variations</p>			
<p><u>METER</u></p> <p><b>c</b>   <b><math>\frac{3}{4}</math></b>   <b><math>\frac{4}{4}</math></b></p>	<p><u>NUMBER OF MEASURES</u></p> <p>157</p>	<p><u>PERFORMANCE TIME</u></p> <p>ca. 4:30</p>	<p><u>PUBLISHER</u></p> <p>Hal Leonard Corporation (1989)</p>

**TECHNICAL CONSIDERATIONS**

Articulations  
Trills  
Tempo changes  
Percussion requirements  
Dynamic contrast  
Accidentals  
*sol*  
Meter changes  
Solos  
Piano parts  
Individual parts  
Style markings  
Phrasing  
Percussion rolls  
Texture  
Dynamic extremes  
Cues  
*Tutti*  
Style changes  
Balance and blend



**TEMPO(S)/STYLE(S)**

With energy (♩ = 130)  
*rit.*  
Andantino (♩ = 112)  
*dolce*  
*molto rit.*  
Andante (♩ = 88)  
Allegro (♩ = 120)

**SOLOS**

Flute 1  
Flute 2  
Alto Sax 1  
F Horn 1  
F Horn 2  
F Horn 4  
Oboe  
Baritone  
Trombone 1 (1 only)

**CUES**

Alto Sax 1 in Clarinet 1  
Alto Clarinet in Tenor Sax  
Bass Clarinet in Bari Sax  
F Horn 4 in Baritone  
Trumpets in Piano  
Baritone in Piano  
F Horn 1 in Trumpet 1  
F Horn 3, 4 in Trumpet 2  
Clarinet 1 in Clarinet 2

**VOCABULARY**

With energy  
*sol*  
*dim.*  
Andantino  
*dolce*  
*col ped.*  
half  
*cresc.*  
*sim.*

<p>Trombone 2 (1 only) Trombone 3 (1 only) Tuba</p>	<p>Alto Clarinet in Baritone Tenor Sax in Baritone Alto Clarinet in F Horn 1 Tenor Sax in F Horn 1 Bari Sax in F Horn 2 Bari Sax in Tuba Baritone in Tenor Sax F Horn 3 in Trumpet 2 F Horn 1 in Trombone 1 F Horn 4 in Trombone 3 Bassoon in String Bass Bass Clarinet in String Bass Alto Sax in String Bass Tenor Sax in String Bass Trombone in Piano Tuba in Piano F Horn 1, 2 in Trumpet 1 Trumpet 1, 2 in Trumpet 3 Clarinet 1 in Clarinet 3 Bassoon in Baritone Flutes in Piccolo Bassoon in F Horn 1 Bass Clarinet in F Horn 2 Bass Clarinet in Tuba F Horns in Alto Sax F Horn 1 in Trumpet 1 F Horn 3 in Trumpet 3 F Horn 2 in Trombone 2</p>	<p><i>molto rit. e dim.</i> Andante Allegro <i>8va</i> <i>tr.</i> <i>rit.</i> solo <i>piu dim.</i> motors off, resonators open <i>tutti</i> choke <i>a2</i> <i>div.</i> 2 only <i>8vb</i></p>
---	--	---

<p style="text-align: center;"><b><u>DYNAMICS</u></b></p> <p style="text-align: center;"><i>pp</i> <i>p</i> <i>mp</i> <i>mf</i> <i>f</i> <i>ff</i> <i>fff</i> <i>cresc.</i> <i>dim.</i></p>	<p style="text-align: center;"><b><u>ARTICULATIONS</u></b></p> <p style="text-align: center;">Accents Slurs Ties Accent/tenuto Tenuto</p>
---	---

*piu dim.*

***sfp*** ————— ***ff***

***f*** ————— ***ff***

***pp*** < ***p*** > < ***mf*** > ***pp***

***pp*** < ***p*** >

***mf*** ————— ***pp***

————— ***p***

————— ***mp***

—————

————— ***mf***

—————

***p*** —————

***p*** < ————— >

***sfz*** > ————— ***p***

***ff*** > ————— <

***mf*** ————— ***ff***

***p*** ————— ***f***

————— ***f***

————— ***mf***

————— ***ff***

### **CONDUCTOR CONSIDERATIONS**

Tempo changes  
Style changes  
Dynamic contrast  
Solos  
Phrasing  
Emotive conducting  
Chamber-like playing  
Articulations  
Theme and variations  
Multiple layers of parts  
Meter changes  
Character of each section  
Dramatic feel at times  
Life of the folk song to be brought out