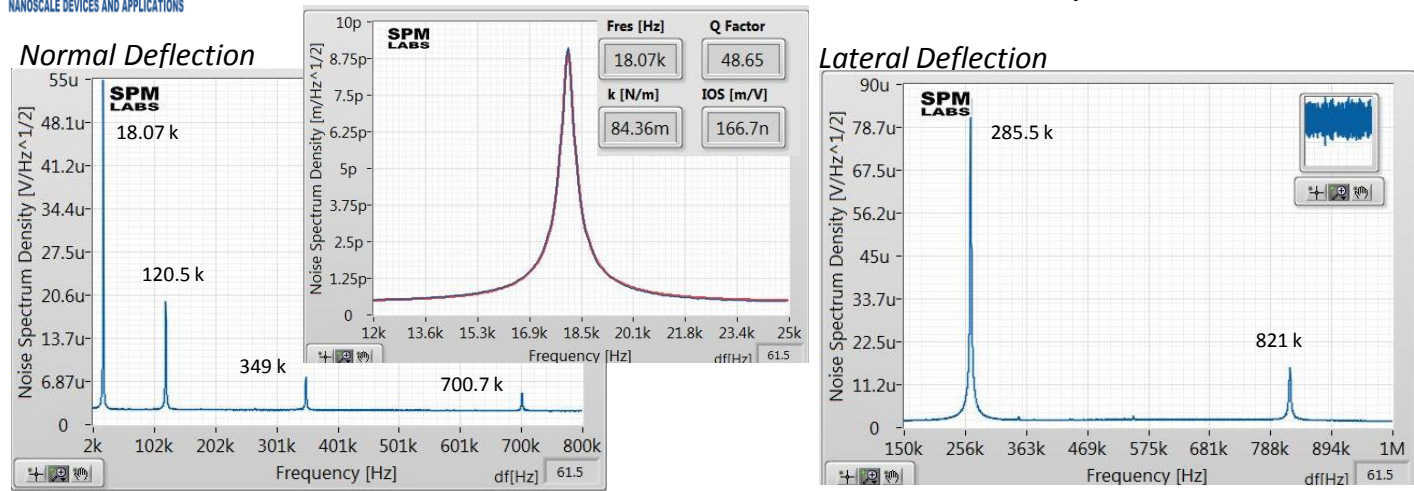


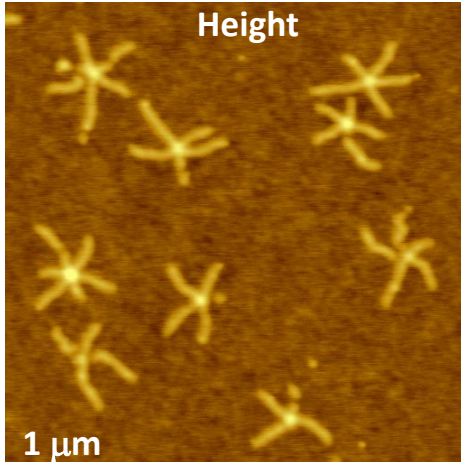
*Thermal Tune Data obtained with DCC accessory*



This Si 225/35/1 probe is the softest that can be applied in AM-PI imaging. The imaging is gentle as it is seen from high-force height image of spoke-wheel macromolecules. The same molecules are deformed in high-force AM imaging with 125/35/2 probe. The 225/35/1 probe can be also used for contact mode imaging of SBS block copolymer. There were no problems in using this probe for imaging of bitumen samples in AM-PI mode.

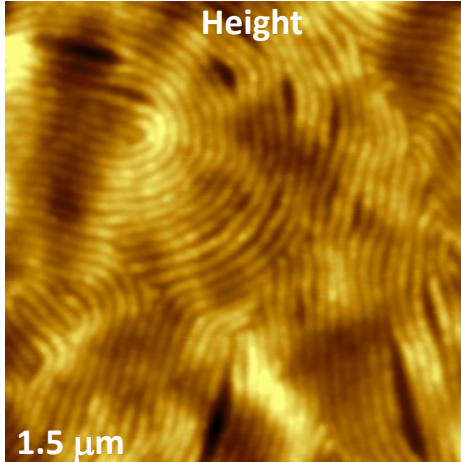
**Spoke-wheel molecules**

*Tapping mode, High force*

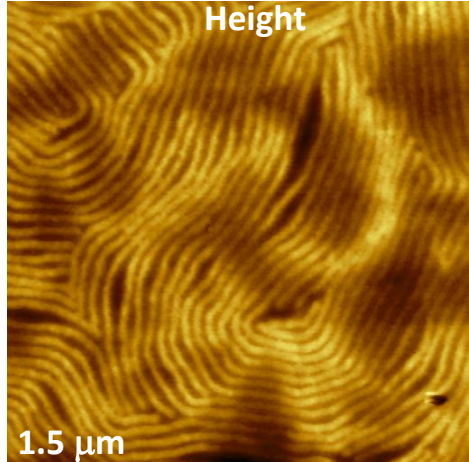


**Triblock copolymer, SBS**

*Tapping mode*



*Contact mode*



**Bitumen**

