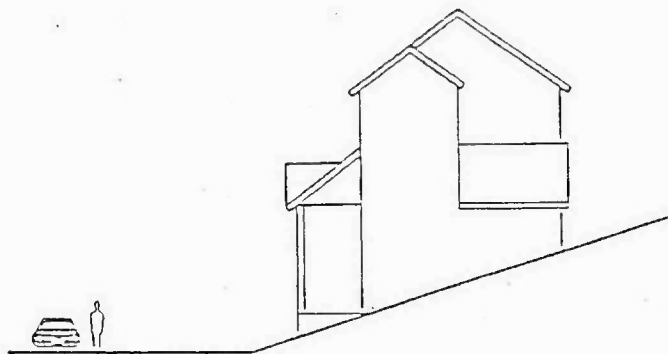


StoneBridge Village ACC
Building Height limitations on sloping lots
May 8, 2000

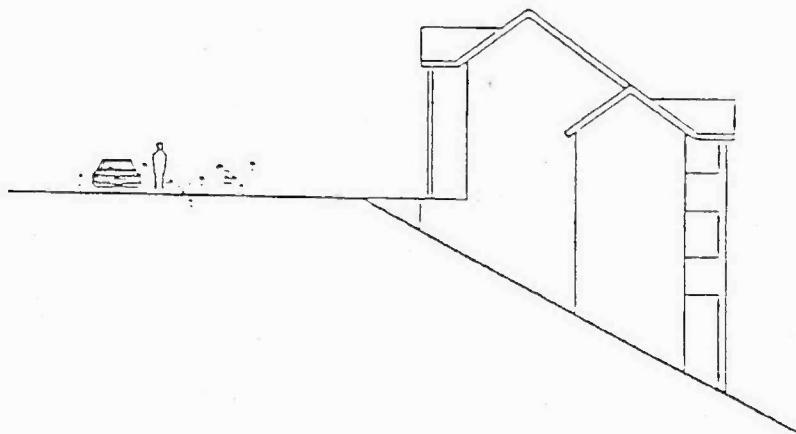
1. Uphill Sloping Lots:

Street facade shall be limited to 25 feet in height* maximum.



2. Downhill Sloping Lots:

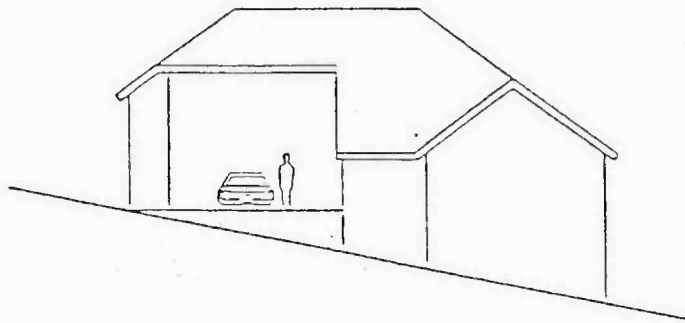
Building height shall be limited to 30 feet in height* maximum. Facades in excess of 25' shall be articulated with the use of decks, roofs, bays or similar projections and recesses, along with variations in finish materials, to avoid expansive, mono-planar elements.



Appendix A

3. Side Sloping Lots:

Street facade shall be limited to 25 feet in height* maximum at any point. Non-street facades shall be limited to 30 feet in height* maximum. Facades in excess of 25' shall be articulated with the use of decks, roofs, bays or similar projections and recesses, along with variations in finish materials, to avoid expansive, mono-planar elements.



Appendix A