

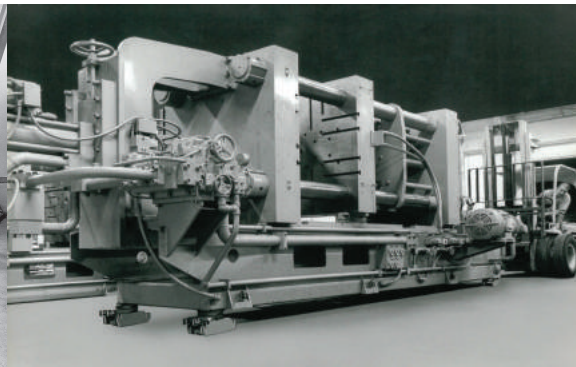
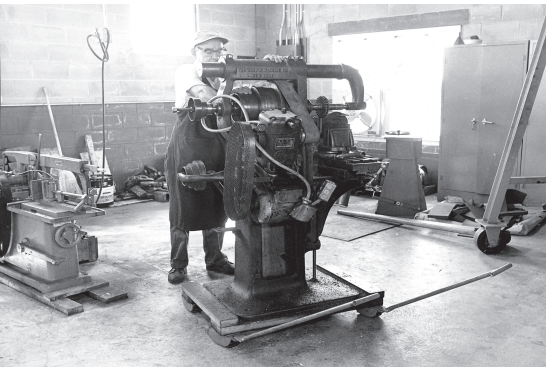


OVER 65 YEARS OF EXCELLENCE

ENGINEERED SOLUTIONS

WWW.HILMANROLLERS.COM

MADE IN USA 



HILMAN

Hilman Inc. designs, engineers and manufactures high capacity rollers, powered heavy moving systems, and custom load moving solutions.

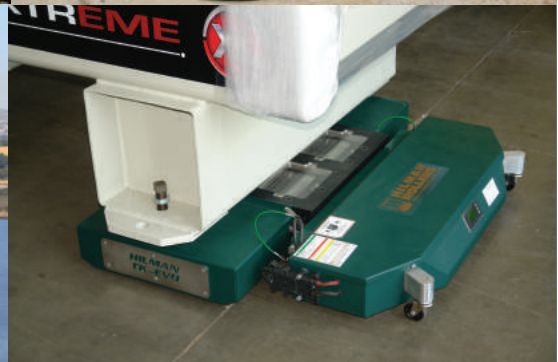
With more than 65 years of innovation and experience, Hilman has earned and maintained a reputation for offering its customers the highest standards of quality, consistency and value making us a world leader when it comes to heavy load moving solutions.

Our high capacity rollers are known throughout the world for their dependability, flexible design, and durability and have been the benchmark by which all other machinery rollers and load moving systems are

measured. In addition, we can design and fabricate custom load moving systems for heavy moving problems that require special attention.

We manufacture our products in the USA. Hilman Inc. is ISO-9001:2015 approved and can submit for the approval of Lloyd's, DNV and ABS as well as other third parties.

Hilman is always up for a challenge. If you have a specific project and would like to learn more about our custom load moving solutions, please contact us.



KITS & SETS



EASY TO CHOOSE, EASY TO USE

Hilman Rollers are high capacity, low profile roller dollies that utilize a recirculating chain design for moving, shifting or positioning heavy weights.

FT SERIES



Variety of Top Styles – versatile top configurations are built into the body of the roller. These steel chain action rollers are a great choice to move heavy equipment over ordinary concrete floors.

NYTON SERIES



Floor Protection – High impact synthetic Nylon rolls are used instead of steel for protection on delicate floor surfaces such as new concrete, epoxy coated surfaces, painted or sealed floors.

ERS SERIES



Lowest Height – Two-piece design features an open top base roller with serrated side plates to maintain a firm grip on moving loads plus detachable swivel attachments.

LIFT



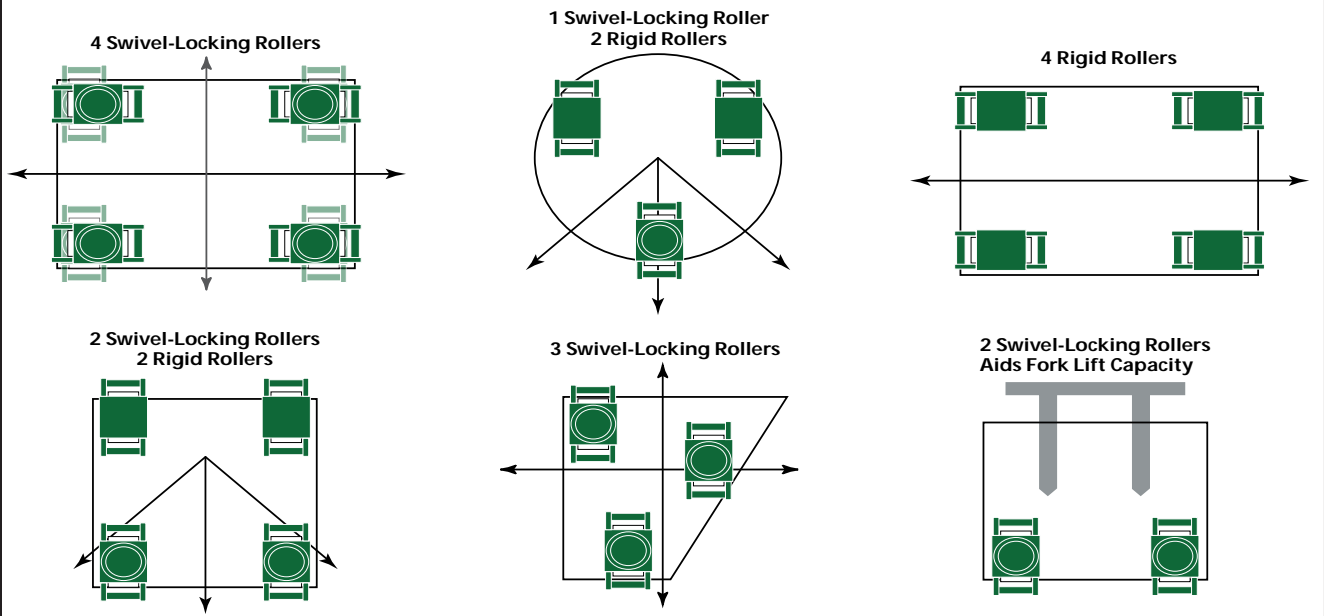
SET



ROLL

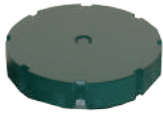


ROLLER CONFIGURATIONS



FT ADVANTAGES

Choose swivel for turning or rigid for straight line moving in a track or standalone.



SMOOTH STEEL TOPS (S)
ideal for weld mounting the rollers to equipment or as a base unit for a variety of top modifications.



PADDED STEEL TOPS (P)
allow some compression and provide a non-slip surface for moving on less than perfect floors.

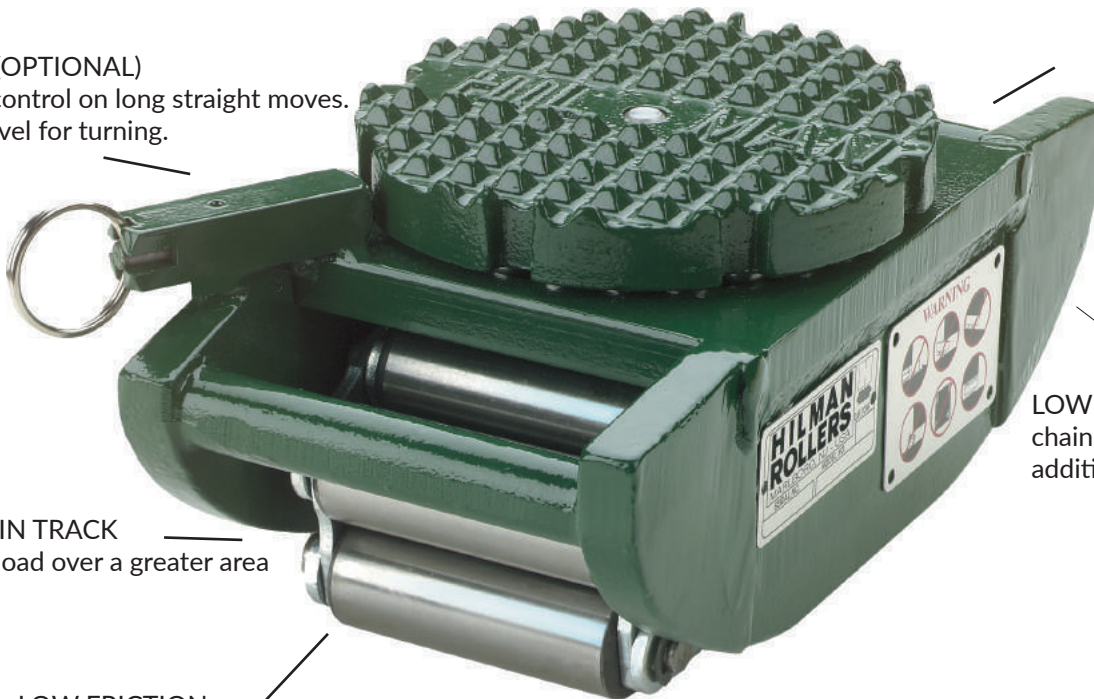


DIAMOND STEEL TOP (D)
spike-like steel grid able to grip into wood and provide a secure move for crated or palletized equipment.

VERSATILE TOP PLATES

LOCKING (OPTIONAL)
for added control on long straight moves. Unlock swivel for turning.

CAST STEEL FRAME
for high quality



WIDE CHAIN TRACK
distributes load over a greater area

LOW MAINTENANCE
chains require no bearings or additional lubrication

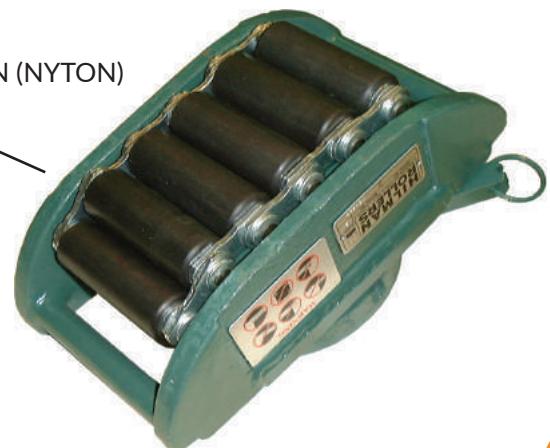
LOW FRICTION
Endless roller chain operates without axle or journal friction as they rotate about the load bearing frame plate. Each roll turns individually giving a friction-free creeping motion.

HARDENED, PRECISION GROUND CHAIN ROLLS
for durability and extra long life



HANDLE
for good grip and positioning

HIGH IMPACT NYLON CHAIN (NYTON)
for delicate floors



INDIVIDUAL

The FT Series offers the widest array of top configurations that are built right into the body of the roller. With six individual roller capacities, these steel chain action rollers are a perfect choice to move heavy equipment over ordinary concrete floors.



SP



SS



RP



RS



SLP



SLD



SLS



RD

Hilman Part #	Top Style	Capacity (tons)	Length		Width		Height		Weight		Contact Rolls
			(in)	(mm)	(in)	(mm)	(in)	(mm)	(lbs)	(kg)	
.75-SP	SWIVEL	0.75	6 1/2	165	3 5/8	92	3 5/16	84	9	4	5
2-SP	PADDED	2	6 1/2	165	4 1/8	92	3 15/16	79	15	4	5
.75-SS	SWIVEL	0.75	6 1/2	165	3 5/8	92	3 5/16	84	9	4	5
2-SS	SMOOTH	2	6 1/2	165	4 1/8	92	3 11/16	70	15	4	5
.75-RP		0.75	6 1/2	165	3 5/8	105	3 1/8	100	9	7	4
2-RP		2	6 1/2	165	4 1/8	105	3 5/8	92	15	7	4
3.75-RP		3.75*	10 1/2	267	5 3/4	146	4 3/16	106	29	13	5
7.5-RP	RIGID	7.5*	10 1/2	267	5 3/4	146	4 7/16	113	33	15	4
10-RP	PADDED	10*	10 1/2	267	5 3/4	146	4 7/16	113	33	15	4
15-RP		15	12 3/4	324	6 3/8	162	4 5/16	110	42	19	5
30-RP		30*	15	380	8	203	6 3/4	171	107	49	5
50-RP		50*	21	533	8	203	7 3/4	197	179	81	7
.75-RS		0.75	6 1/2	165	3 5/8	105	2 3/4	94	9	7	4
2-RS		2	6 1/2	165	4 1/8	105	3 1/4	83	15	7	4
3.75-RS	RIGID	3.75*	10 1/2	267	5 5/8	143	3 11/16	94	29	13	5
7.5-RS	SMOOTH	7.5*	10 1/2	267	5 5/8	143	3 15/16	100	32	15	4
10-RS		10*	10 1/2	267	5 5/8	143	3 15/16	100	32	15	4
15-RS		15	12 3/4	324	6 3/8	162	3 13/16	97	43	20	5
30-RS		30*	15	380	8	203	5 3/4	146	105	48	5
50-RS		50*	21	533	8	203	6 3/4	171	176	80	7
3.75-SLP		3.75*	10 1/2	267	5 3/4	146	5	127	34	15	5
7.5-SLP	SWIVEL	7.5*	10 1/2	267	5 3/4	146	5 1/4	133	38	17	4
10-SLP	LOCKING	10*	10 1/2	267	5 3/4	146	5 1/4	133	38	17	4
15-SLP	PADDED	15	12 3/4	324	6 3/8	162	5 1/8	130	49	22	5
30-SLP		30*	15	380	8	203	8	203	122	55	5
50-SLP		50*	21	533	8	203	8 5/16	227	193	88	7
3.75-SLD		3.75*	10 1/2	267	5 3/4	146	4 3/4	121	34	15	5
7.5-SLD	SWIVEL	7.5*	10 1/2	267	5 3/4	146	5	127	37	17	4
10-SLD	LOCKING	10*	10 1/2	267	5 3/4	146	5	127	37	17	4
15-SLD	DIAMOND	15	12 3/4	324	6 3/8	162	4 7/8	124	49	22	5
30-SLD		30	15	380	8	203	7 3/32	180	118	54	5
50-SLD		50	21	533	8	203	8 1/16	205	189	86	7
3.75-SLS		3.75*	10 1/2	267	6	152	4 5/8	117	35	16	5
7.5-SLS	SWIVEL	7.5*	10 1/2	267	6	152	4 7/8	124	38	17	4
10-SLS	LOCKING	10*	10 1/2	267	6	152	4 7/8	124	38	17	4
15-SLS	SMOOTH	15	12 3/4	324	6 3/8	162	4 3/4	121	50	23	5
30-SLS		30	15	380	8	203	6 31/32	177	119	54	5
50-SLS		50	20 7/8	530	8	203	7 15/16	202	191	87	7
3.75-RD		3.75*	10 1/2	267	5 3/4	146	4 1/16**	103	29	13	5
7.5-RD		7.5*	10 1/2	267	5 3/4	146	4 5/16**	110	32	15	4
10-RD	RIGID	10*	10 1/2	267	5 3/4	146	4 5/16**	110	32	15	4
15-RD	DIAMOND	15	12 3/4	324	6 3/8	162	4 3/32**	104	38	17	5
30-RD		30*	15	380	8	203	6 1/8**	156	105	48	5
50-RD		50*	21	533	8	203	7 1/8**	181	176	80	7

*Width dimension of top exceeds roller frame width

** Height to top of spike

KITS & SETS

Hilman Part #	Kit/Set Capacity	Kit / Set Include	Weight	
			(lbs)	(kg)
KRS-3-2S/2R	3	(2) 0.75-SP Rollers, (2) 0.75-RP Rollers, (2) 3-KH Handles , Case	55	25
RS-3-2S/2R	3	(2) 0.75-SP Rollers, (2) 0.75-RP Rollers, (2) 3-KH Handles	52	24
KRS-3-4S	3	(4) 0.75-SP Rollers, (2) 3-KH Handles, Case	55	25
RS-3-4S	3	(4) 0.75-SP Rollers, (2) 3-KH Handles	52	24
KRS-8-2S/2R	8	(2) 2-SP Rollers, (2) 2-RP Rollers, (2) 8-KH Handles, Case	85	39
RS-8-2S/2R	8	(2) 2-SP Rollers, (2) 2-RP Rollers, (2) 8-KH Handles	76	35
KRS-8-4S	8	(4) 2-SP Rollers, (2) 8-KH Handles, Case	85	39
RS-8-4S	8	(4) 2-SP Rollers, (2) 8-KH Handles	76	35
KRS-15-SLP	15	(4) 3.75-SLP Rollers; (2) KDH48F Handles; Case	203	92
RS-15-SLP	15	(4) 3.75-SLP Rollers; (2) H36F 36" Handles	156	71
KRS-15-SLD	15	(4) 3.75-SLD Rollers; (4) P-1 Preload Pads; (2) KDH48F Handles; Case	203	92
RS-15-SLD	15	(4) 3.75-SLD Rollers; (4) P-1 Preload Pads; (2) H36F 36" Handles	156	71
KRS-30-SLP	30	(4) 7.5-SLP Rollers; (2) KDH48F Handles; Case	215	98
RS-30-SLP	30	(4) 7.5-SLP Rollers; (2) H48F 48" Handles	172	78
KRS-30-SLD	30	(4) 7.5-SLD Rollers; (4) P-1 Preload Pads; (2) KDH48F Handles; Case	215	98
RS-30-SLD	30	(4) 7.5-SLD Rollers; (4) P-1 Preload Pads; (2) H48F 48" Handles	172	78
KRS-40-SLP	40	(4) 10-SLP Rollers; (2) KDH48F Kit Size Handles; Case	219	99
RS-40-SLP	40	(4) 10-SLP Rollers; (2) H48F 48" Handles	176	80
KRS-40-SLD	40	(4) 10-SLD Rollers; (4) P-1 Preload Pads; (2) KDH48F Handles; Case	219	99
RS-40-SLD	40	(4) 10-SLD Rollers; (4) P-1 Preload Pads; (2) H48F 48" Handles	176	80
KRS-60-SLP	60	(4) 15-SLP Rollers; (2) KDH48F Kit Size Handles; Case	255	116
RS-60-SLP	60	(4) 15-SLP Rollers; (2) H48F 48" Handles	212	96
KRS-60-SLD	60	(4) 15-SLD Rollers; (4) P-1 Preload Pads; (2) KDH48F Handles; Case	259	117
RS-60-SLD	60	(4) 15-SLD Rollers; (4) P-1 Preload Pads; (2) H48F 48" Handles	216	98
RS-120-SLP	120	(4) 30-SLP Rollers; (2) H60F 60" Handles	542	256
RS-120-SLD	120	(4) 30-SLD Rollers; (4) P-2 Preload Pads; (2) H60F 60" Handles	540	245
RS-200-SLP	200	(4) 50-SLP Rollers; (2) H60F 60" Handles	834	378
RS-200-SLD	200	(4) 50-SLD Rollers; (4) P-2 Preload Pads; (2) H60F 60" Handles	848	385



*All Kits 15 to 60 tons include- Steel Case Kit Box KB-D2: 27.75" (705mm) x 14.75" (375mm) x 9.63" (245mm)

*All Kits 3 to 8 tons include- Steel Case Kit Box KB-D1: 16" (406mm) x 12.375" (314mm) x 4.44" (113mm)

Hilman Part #	Fits	Fits	Description	Length		Weight	
				(in)	(mm)	(lbs)	(kg)
3-KH	FT 3 ton Kits	Nyton 2 ton Kits	One Part Kit Size Handle	15	381	3	1
8-KH	FT 8 ton Kits	Nyton 4 ton Kits	Two Part Kit Size Handle	30	762	6	3
KDH48F	FT 15 - 60 ton Kits	Nyton 8 - 24 ton Kits	Two Part Kit Size Handle	48	1219	12	5
H36F	FT 3.75 - 15 ton Rollers	Nyton 2 - 6 ton Rollers	One Part Handle	36	914	10	5



NYTON

The Nyton series is designed for heavy moving capabilities on delicate floor surfaces such as new concrete, epoxy coated surfaces, painted or sealed floors, and some properly supported tile and terrazzo floors.

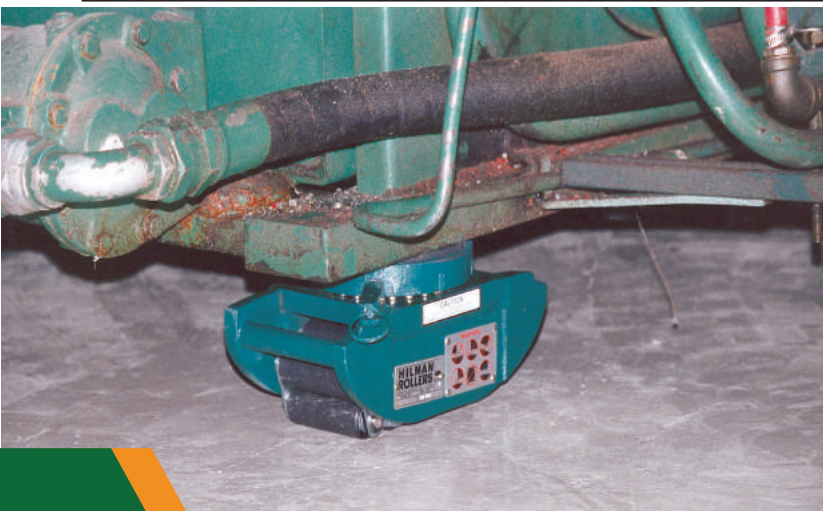
Hilman Part #	Capacity (tons)	Length		Width		Height		Weight		Contact Rolls	Type	Top Style
		(in)	(mm)	(in)	(mm)	(in)	(mm)	(lbs)	(kg)			
N.5-SP	0.5	6 1/2	165	3 5/8	92	3 7/16	87	7	3	5	Swivel	Padded
N1-SP	1	6 1/2	165	4 1/8	105	3 15/16	100	12	5	4	Swivel	Padded
N2-SLP*	2	10 1/2	267	5 3/4	146	5	127	28	13	5	Swivel	Padded
N3-SLP*	3	10 1/2	267	5 3/4	146	5 1/4	134	29	13	4	Swivel	Padded
N6-SLP	6	12 3/4	324	6 3/8	162	5 1/8	130	36	16	5	Swivel	Padded
N10-SLP	10	15	381	8	203	7 31/32	202	100	45	5	Swivel	Padded
N.5-RP	0.5	6 1/2	165	3 5/8	92	3 1/8	80	6	3	5	Rigid	Padded
N1-RP	1	6 1/2	165	4 1/8	105	3 5/8	92	11	5	4	Rigid	Padded
N2-RP*	2	10 1/2	267	5 3/4	146	4 3/16	107	23	10	5	Rigid	Padded
N3-RP*	3	10 1/2	267	5 3/4	146	4 7/16	113	24	11	4	Rigid	Padded
N6-RP	6	12 3/4	324	6 3/8	162	4 5/16	110	31	14	5	Rigid	Padded
N10-RP	10	15	381	8	203	6 3/4	171	86	39	5	Rigid	Padded

*Width dimension of top exceeds roller frame width



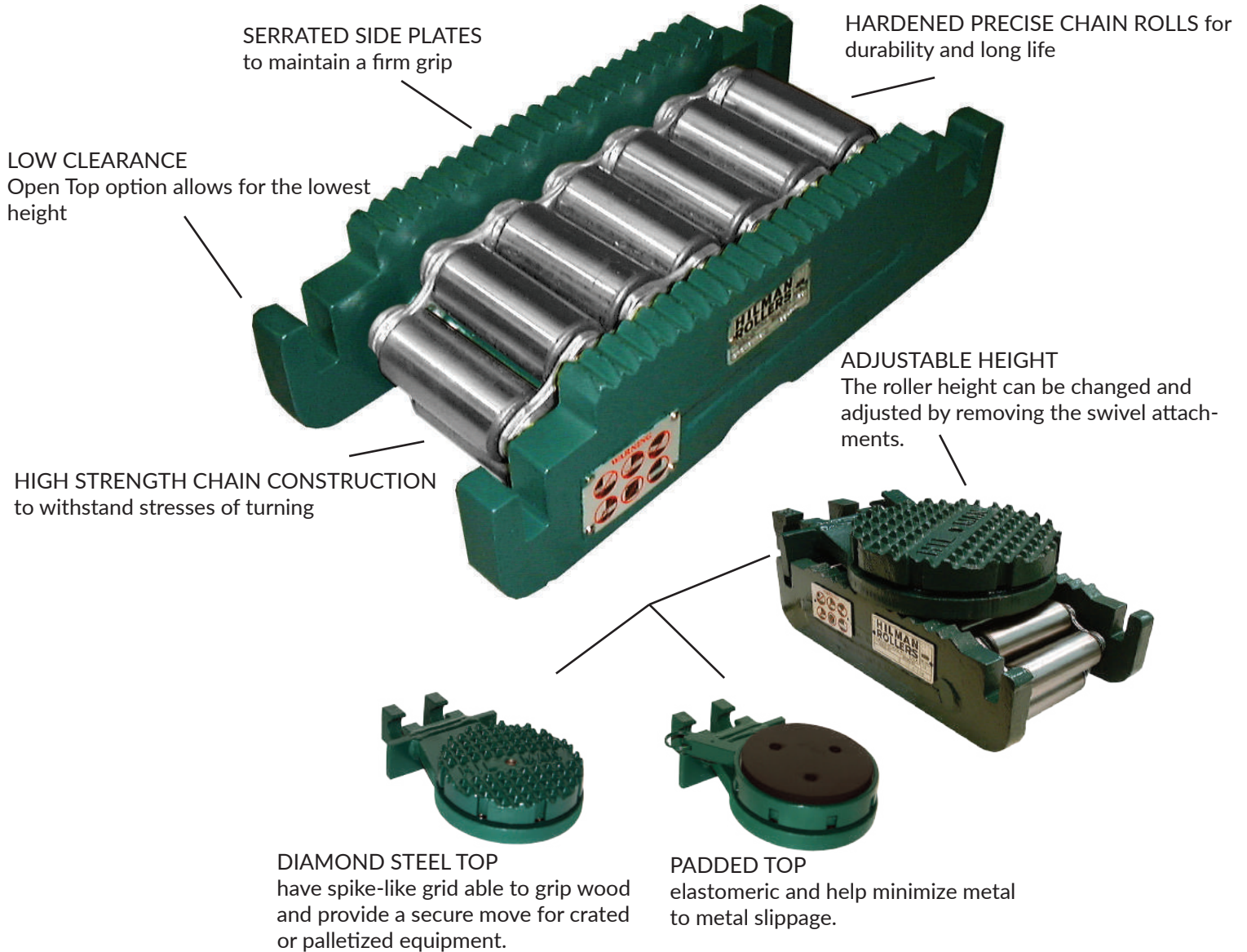
Hilman Part #	Kit/Set Capacity (tons)	Kit/Set Include	Weight (lbs)	(kg)
KNRS-2-2S/2R	2	(2) N.5-SP Rollers, (2) N.5-RP Rollers, (2) 3-KH Handles; Case	45	20
NRS-2-2S/2R	2	(2) N.5-SP Rollers, (2) N.5-RP Rollers, (2) 3-KH Handles	42	19
KNRS-2-4S	2	(4) N.5-SP Rollers, (2) 3-KH Handles; Case	47	21
NRS-2-4S	2	(4) N.5-SP Rollers, (2) 3-KH Handles	44	20
KNRS-4-2S/2R	4	(2) N1-SP Rollers, (2) N1-RP Rollers, (2) 8-KH Handles; Case	69	31
NRS-4-2S/2R	4	(2) N1-SP Rollers, (2) N1-RP Rollers, (2) 8-KH Handles	60	27
KNRS-4-4S	4	(4) N1-SP Rollers, (2) 8-KH Handles; Case	69	31
NRS-4-4S	4	(4) N1-SP Rollers, (2) 8-KH Handles	60	27
KNRS-8-SLP	8	(4) N2-SLP Rollers, (2) KD48F Kit Size Handles; Case	179	81
NRS-8-SLP	8	(4) N2-SLP Rollers, (2) KD48F Kit Size Handles	136	62
KNRS-12-SLP	12	(4) N3-SLP Rollers, (2) KD48F Kit Size Handles; Case	179	81
NRS-12-SLP	12	(4) N3-SLP Rollers, (2) KD48F Kit Size Handles	136	62
KNRS-24-SLP	24	(4) N6-SLP Rollers, (2) KD48F Kit Size Handles; Case	203	92
NRS-24-SLP	24	(4) N6-SLP Rollers, (2) KD48F Kit Size Handles	160	73
NRS-40-SLP	40	(4) N10-SLP Rollers, (2) H60F 60" Handles	458	208

*All Kits include- Steel Case Kit Box KB-D2: 27.75" (705mm) x 14.75" (375mm) x 9.63" (245mm)



ERS ADVANTAGES

The ERS Series features a two-piece design with a base roller with serrated side plates to maintain a firm grip on moving loads plus detachable swivel attachments. Manually situated on the Rollers, these optional attachments enhance maneuverability and add minimal height to the basic roller. It is especially valuable for tasks requiring a roller with low clearance.



Hilman Part #	Capacity (tons)	Length		Width		Height		Weight		Contact Rolls
		(in)	(mm)	(in)	(mm)	(in)	(mm)	(lbs)	(kg)	
3.75-ERS	3.75	8 5/8	219	4 7/16	113	2 3/4	70	15	7	5
5-ERS	5	8 5/8	219	5 5/16	135	2 3/4	70	20	9	5
10-ERS	10	10 3/8	264	5 3/16	132	3 3/8	86	29	13	5
12.5-ERS	12.5	10 3/8	264	5 5/8	143	3 3/8	86	31	14	5
25-ERS	25	5 3/4	400	7 1/4	184	4 3/4	121	79	36	5
65-ERS	65	23	584	7 3/8	187	5 5/8	143	156	71	7
100-ERS	100	23	584	7 7/8	200	5 5/8	143	165	75	7

KITS & SETS

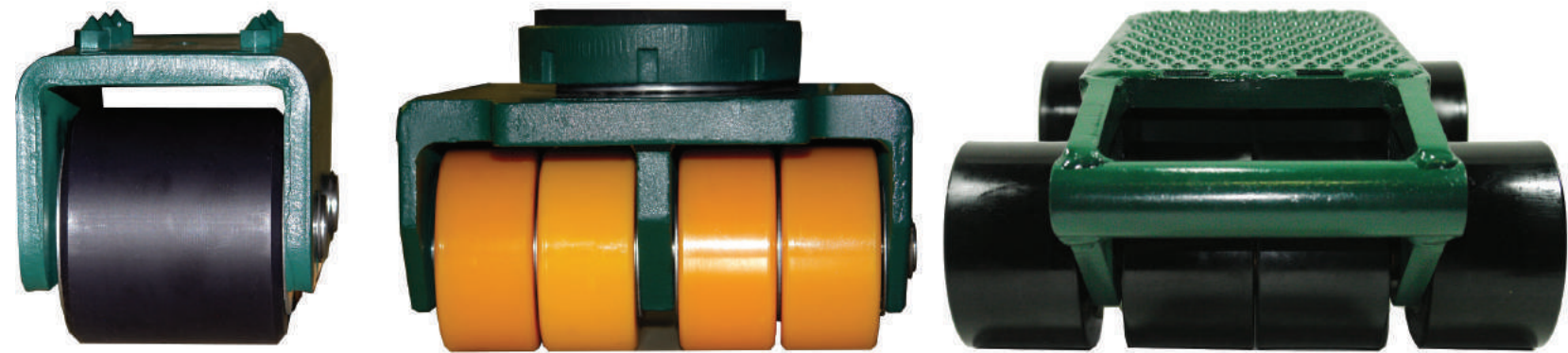


Hilman Part #	Kit/Set Capacity (tons)	Kit/Set Include	Weight	
			(lbs)	(kg)
KRS-15-ERSD	15	(4) 3.75-ERS Rollers, (4) T-3.75-LD Swivel Locking Diamond Attachments, (4) P-1 Preload Pads, (2) KDH48E Kit Size Handles; Case	181	82
RS-15-ERSD	15	(4) 3.75-ERS Rollers, (4) T-3.75-LD Swivel Locking Diamond Attachments, (4) P-1 Preload Pads, (2) H36E 36" Handles	130	59
KRS-20-ERSD	20	(4) 5-ERS Rollers, (4) T-5-LD Swivel Locking Diamond Attachments, (4) P-1 Preload Pads, (2) KDH48E Kit Size Handle; Case	201	91
RS-20-ERSD	20	(4) 5-ERS Rollers, (4) T-5-LD Swivel Locking Diamond Attachments, (4) P-1 Preload Pads, (2) H36E 36" Handles	150	68
KRS-40-ERSD	40	(4) 10-ERS Rollers, (4) T-10-LD Swivel Locking Diamond Attachments, (4) P-1 Preload Pads, (2) KDH48E Kit Size Handles; Case	241	109
RS-40-ERSD	40	(4) 10-ERS Rollers, (4) T-10-LD Swivel Locking Diamond Attachments, (4) P-1 Preload Pads, (2) H48E 48" Handles	196	89
KRS-50-ERSD	50	(4) 12.5-ERS Rollers, (4) T-12.5-LD Swivel Locking Diamond Attachments, (4) P-1 Preload Pads, (2) KDH48E Kit Size Handles; Case	249	113
RS-50-ERSD	50	(4) 12.5-ERS Rollers, (4) T-12.5-LD Swivel Locking Diamond Attachments, (4) P-1 Preload Pads, (2) H48E 48" Handles	204	93
RS-100-ERSD	100	(4) 25-ERS Rollers, (4) T-25-LD Swivel Locking Diamond Attachments, (4) P-2 Preload Pads, (2) H48E 48" Handles	514	233
RS-260-ERSD	260	(4) 65-ERS Rollers, (4) T-65-LD Swivel Locking Diamond Attachments, (4) P-2 Preload Pads, (2) H60E 60" Handles	870	395
RS-400-ERSD	400	(4) 100-ERS Rollers, (4) T-100-LD Swivel Locking Diamond Attachments, (4) P-2 Preload Pads, (2) H60E 60" Handles	906	411

Swivel Locking Diamond Top	Swivel Locking Padded Top	Fits Individual Roller Part #	Padded (P) Style Height*		Diamond (D) Style Height*		Attachment Width		Length*		Weight	
			(in)	(mm)	(in)	(mm)	(in)	(mm)	(in)	(mm)	(lbs)	(kg)
T-3.75-LD	T-3.75-LP	3.75-ERS	4 11/16	119	4 7/16	113	5 7/8	149	10 3/4	273	13	6
T-5-LD	T-5-LP	5-ERS	4 11/16	119	4 7/16	113	5 7/8	149	10 3/4	273	13	6
T-10-LD	T-10-LP	10-ERS	5 5/16	135	5 1/16	129	5 7/8	149	12 1/2	318	14	6
T-12.5-LD	T-12.5-LP	12.5-ERS	5 5/16	135	5 1/16	129	5 7/8	149	12 1/2	318	14	6
T-25-LD	T-25-LP	25-ERS	7 15/16	202	7 1/16	179	8	203	18 19/32	472	42	19
T-65-LD	T-65-LP	65-ERS	8 13/16	224	7 15/16	202	8 3/8	213	25 3/8	645	47	21
T-100-LD	T-100-LP	100-ERS	8 13/16	224	7 15/16	202	8 3/8	213	25 3/8	645	47	21

Hilman Part #	Fits	Description	Length		Weight	
			(in)	(mm)	(lbs)	(kg)
KDH48E	ERS Series 15 - 50 ton Kits	Two Part Kit Size Handles	48	1219	11	5
H36E	ERS Series Swivel Attachments to T - 25	One Part Handle	36	914	7	3
H48E	ERS Series Swivel Attachments to T - 65	One Part Handle	48	1219	10	5
H60E	All ERS Series Swivel Attachments	One Part Handle	60	1524	24	11

BULL DOLLY



BULL DOLLY

The Hilman Bull Dolly Series are a lightweight, cost effective solution for moving heavy equipment such as large safes, chillers, condensers and other machinery.

1-6 TONS



Lightweight, Cost Effective- Offers different wheel options to protect floors and a variety of top styles for straight moving or turning.

9-18 TONS



Higher Capacity, Large Foot-print - allows user to spread the load over greater area up to 18 tons!

4-72 TON KITS



Prepackaged Kits - come equipped with everything needed to move heavy equipment with ease!

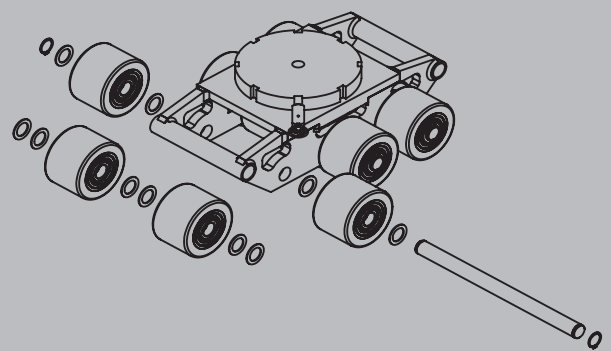


FLOOR PROTECTION

Polyurethane and Nylon wheel options are non-marking and can be used on a variety of floor surfaces.

MAINTENANCE FRIENDLY

Our dollies have very few moving parts minimizing maintenance requirements.

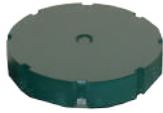


EASY TO MANEUVER

Bull Dollies are ideal for positioning and moving heavy loads either in a straight line or where turns are needed.

ADVANTAGES

Choose Rigid for straight or Swivel for easy turning.



SMOOTH STEEL TOPS (S)
ideal for weld-mounting the rollers to equipment or as a base unit for a variety of top modifications.



PADDED STEEL TOPS (P)
allow some compression and provide a non-slip surface for moving on less than perfect floors.



DIAMOND STEEL TOP (D)
spike-like steel grid able to grip into wood and provide a secure move for crated or palletized equipment.

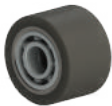
VERSATILE TOP PLATES



LOW PROFILE

LOCK
enables the units to be used as swivel or rigid top dollies

WHEEL OPTIONS



NYLON WHEELS
for good floor protection and favorable wear. They will not "set" if left under load (static) for a period of time



POLY WHEELS
are a softer wheel that provide excellent floor protection on tile floors



STEEL WHEELS
provide the best wear characteristics and are great for durable floors

MAINTENANCE FRIENDLY
wheel & axle design has very few moving parts for easy maintenance

LARGER FOOTPRINT
to spread the load over greater area



MULTI-FUNCTIONAL HANDLE
for pulling

HANDLE & ALIGNMENT BAR
larger models have a handle for pulling or you can use a standard 1 inch alignment bar to stabilize heavy loads or connect multiple dollies



KITS

Lightweight, Cost Effective – easy to maneuver heavy equipment such as large safes, chillers, condensers and machinery.

KBSP-24P

KBSS-12S

KBSD-4N



Product Number	Kit Capacity	Dolly Capacity	Top Style Description	Roller Material	Kits Include	Weight	
						lbs.	kgs.
KBRD-4N	4 ton	1 ton	Rigid Diamond	Nylon	(4) BRD-1N Dollies, (2) Handles, (4) Pre-load pads	75	34
KBRD-4P	4 ton	1 ton	Rigid Diamond	Polyurethane	(4) BRD-1P Dollies, (2) Handles, (4) Pre-load pads	75	34
KBRD-4S	4 ton	1 ton	Rigid Diamond	Steel	(4) BRD-1S Dollies, (2) Handles, (4) Pre-load pads	75	34
KBSP-4N	4 ton	1 ton	Swivel Padded	Nylon	(4) BSP-1N Dollies, (2) Handles	85	39
KBSP-4P	4 ton	1 ton	Swivel Padded	Polyurethane	(4) BSP-1P Dollies, (2) Handles	85	39
KBSP-4S	4 ton	1 ton	Swivel Padded	Steel	(4) BSP-1S Dollies, (2) Handles	85	39
KBSD-4N	4 ton	1 ton	Swivel Diamond	Nylon	(4) BSD-1N Dollies, (2) Handles, (4) Pre-load pads	83	38
KBSD-4P	4 ton	1 ton	Swivel Diamond	Polyurethane	(4) BSD-1P Dollies, (2) Handles, (4) Pre-load pads	83	38
KBSD-4S	4 ton	1 ton	Swivel Diamond	Steel	(4) BSD-1S Dollies, (2) Handles, (4) Pre-load pads	83	38
KBRD-12N	12 ton	3 ton	Rigid Diamond	Nylon	(4) BRD-3N Dollies, (2) Handles, (4) Pre-load pads	91	41
KBRD-12P	12 ton	3 ton	Rigid Diamond	Polyurethane	(4) BRD-3P Dollies, (2) Handles, (4) Pre-load pad	91	41
KBRD-12S	12 ton	3 ton	Rigid Diamond	Steel	(4) BRD-3S Dollies, (2) Handles, (4) Pre-load pads	91	41
KBSP-12N	12 ton	3 ton	Swivel Padded	Nylon	(4) BSP-3N Dollies, (2) Handles	100	45
KBSP-12P	12 ton	3 ton	Swivel Padded	Polyurethane	(4) BSP-3P Dollies, (2) Handles	100	45
KBSP-12S	12 ton	3 ton	Swivel Padded	Steel	(4) BSP-3S Dollies, (2) Handles	100	45
KBSD-12N	12 ton	3 ton	Swivel Diamond	Nylon	(4) BSD-3N Dollies, (2) Handles, (4) Pre-load pads	102	46
KBSD-12P	12 ton	3 ton	Swivel Diamond	Polyurethane	(4) BSD-3P Dollies, (2) Handles, (4) Pre-load pads	102	46
KBSD-12S	12 ton	3 ton	Swivel Diamond	Steel	(4) BSD-3S Dollies, (2) Handles, (4) Pre-load pads	102	46
KBSS-12N	12 ton	3 ton	Swivel Smooth	Nylon	(4) BSS-3N Dollies, (2) Handles	102	46
KBSS-12P	12 ton	3 ton	Swivel Smooth	Polyurethane	(4) BSS-3P Dollies, (2) Handles	102	46
KBSS-12S	12 ton	3 ton	Swivel Smooth	Steel	(4) BSS-3S Dollies, (2) Handles	102	46
KBRD-24N	24 ton	6 ton	Rigid Diamond	Nylon	(4) BRD-6N Dollies, (2) Handles, (4) Pre-load pads	196	89
KBRD-24P	24 ton	6 ton	Rigid Diamond	Polyurethane	(4) BRD-6P Dollies, (2) Handles, (4) Pre-load pads	196	89
KBRD-24S	24 ton	6 ton	Rigid Diamond	Steel	(4) BRD-6S Dollies, (2) Handles, (4) Pre-load pads	196	89
KBSP-24N	24 ton	6 ton	Swivel Padded	Nylon	(4) BSP-6N Dollies, (2) Handles	216	98
KBSP-24P	24 ton	6 ton	Swivel Padded	Polyurethane	(4) BSP-6P Dollies, (2) Handles	216	98
KBSP-24S	24 ton	6 ton	Swivel Padded	Steel	(4) BSP-6S Dollies, (2) Handles	216	98
KBSD-24N	24 ton	6 ton	Swivel Diamond	Nylon	(4) BSD-6N Dollies, (2) Handles, (4) Pre-load pads	21	98
KBSD-24P	24 ton	6 ton	Swivel Diamond	Polyurethane	(4) BSD-6P Dollies, (2) Handles, (4) Pre-load pads	216	98
KBSD-24S	24 ton	6 ton	Swivel Diamond	Steel	(4) BSD-6S Dollies, (2) Handles, (4) Pre-load pads	216	98
KBSS-24N	24 ton	6 ton	Swivel Smooth	Nylon	(4) BSS-6N Dollies, (2) Handles	213	97
KBSS-24P	24 ton	6 ton	Swivel Smooth	Polyurethane	(4) BSS-6P Dollies, (2) Handles	213	97
KBSS-24S	24 ton	6 ton	Swivel Smooth	Steel	(4) BSS-6S Dollies, (2) Handles	213	97

INDIVIDUAL

Bull Dollies are ideal for positioning and moving heavy loads either in a straight line or where turns are needed.

Offers different wheel options to protect floors and a variety of top styles for straight moving (Rigid) or turning (Swivel).

Rigid Diamond



Product Number	Roller Capacity	Top Style Description	Roller Material	Height		Width		Length		Weight	
				inches	mm	inches	mm	inches	mm	lbs.	kg
BRD-1N	1 ton	Rigid Diamond	Nylon	4	102	4.43	113	6.5	165	9	4
BRD-1P	1 ton	Rigid Diamond	Polyurethane	4	102	4.43	113	6.5	165	9	4
BRD-1S	1 ton	Rigid Diamond	Steel	4	102	4.43	113	6.5	165	9	4
BRD-3N	3 ton	Rigid Diamond	Nylon	4.36	111	5.23	133	8	203	13	6
BRD-3P	3 ton	Rigid Diamond	Polyurethane	4.36	111	5.23	133	8	203	13	6
BRD-3S	3 ton	Rigid Diamond	Steel	4.36	111	5.23	133	8	203	13	6
BRD-6N	6 ton	Rigid Diamond	Nylon	4.45	113	10	254	11	279	34	15
BRD-6P	6 ton	Rigid Diamond	Polyurethane	4.45	113	10	254	11	279	34	15
BRD-6S	6 ton	Rigid Diamond	Steel	4.45	113	10	254	11	279	34	15

Swivel Diamond



BSD-1N	1 ton	Swivel Diamond	Nylon	4.43	113	4.43	113	6.5	165	11	5
BSD-1P	1 ton	Swivel Diamond	Polyurethane	4.43	113	4.43	113	6.5	165	11	5
BSD-1S	1 ton	Swivel Diamond	Steel	4.43	113	4.43	113	6.5	165	11	5
BSD-3N	3 ton	Swivel Diamond	Nylon	4.79	122	5.23	133	8	203	16	7
BSD-3P	3 ton	Swivel Diamond	Polyurethane	4.79	122	5.23	133	8	203	16	7
BSD-3S	3 ton	Swivel Diamond	Steel	4.79	122	5.23	133	8	203	16	7
BSD-6N	6 ton	Swivel Diamond	Nylon	5.1	129	10	254	11	279	39	18
BSD-6P	6 ton	Swivel Diamond	Polyurethane	5.1	129	10	254	11	279	39	18
BSD-6S	6 ton	Swivel Diamond	Steel	5.1	129	10	254	11	279	39	18

Swivel Padded



BSP-1N	1 ton	Swivel Padded	Nylon	4.99	127	4.43	113	6.5	165	12	5
BSP-1P	1 ton	Swivel Padded	Polyurethane	4.99	127	4.43	113	6.5	165	12	5
BSP-1S	1 ton	Swivel Padded	Steel	4.99	127	4.43	113	6.5	165	12	5
BSP-3N	3 ton	Swivel Padded	Nylon	5.35	136	5.23	133	8	203	15	7
BSP-3P	3 ton	Swivel Padded	Polyurethane	5.35	136	5.23	133	8	203	15	7
BSP-3S	3 ton	Swivel Padded	Steel	5.35	136	5.23	133	8	203	15	7
BSP-6N	6 ton	Swivel Padded	Nylon	6.6	142	10	254	11	279	39	18
BSP-6P	6 ton	Swivel Padded	Polyurethane	6.6	142	10	254	11	279	39	18
BSP-6S	6 ton	Swivel Padded	Steel	6.6	142	10	254	11	279	39	18

Swivel Smooth

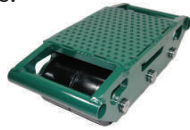


BSS-3N	3 ton	Swivel Smooth	Nylon	4.79	122	5.23	133	8	203	16	7
BSS-3P	3 ton	Swivel Smooth	Polyurethane	4.79	122	5.23	133	8	203	16	7
BSS-3S	3 ton	Swivel Smooth	Steel	4.79	122	5.23	133	8	203	16	7
BSS-6N	6 ton	Swivel Smooth	Nylon	4.85	123	10	254	11	279	38	17
BSS-6P	6 ton	Swivel Smooth	Polyurethane	4.85	123	10	254	11	279	38	17
BSS-6S	6 ton	Swivel Smooth	Steel	4.85	123	10	254	11	279	38	17

Note: All Swivel Top Styles Include Locks

HIGH CAPACITY

9, 12 and 18 ton models have a larger footprint to spread the weight of the load over greater area. Our larger dollies also feature a multi-functional carrying handle that can not only be used to position the unit, but can also fit an optional standard 1 inch alignment bar to stabilize heavy loads.



INDIVIDUAL

Product Number	Roller Capacity	Top Style Description	Roller Material	Height		Width		Length		Weight	
				inches	mm	inches	mm	inches	mm	lbs.	kg
BRD-9P	9 ton	Rigid Diamond	Polyurethane	5.63	143	8.125	206	18.32	465	111	50
BSS-9P	9 ton	Swivel Smooth	Polyurethane	6.86	174	8.125	206	18.32	465	119	53
BSP-9P	9 ton	Swivel Padded	Polyurethane	7.86	199	8.125	206	18.32	465	120	54
BSD-9P	9 ton	Swivel Diamond	Polyurethane	6.98	177	8.125	206	18.32	465	119	53
BRD-12P	12 ton	Rigid Diamond	Polyurethane	5.63	143	8.125	206	18.32	465	122	55
BSS-12P	12 ton	Swivel Smooth	Polyurethane	6.86	174	8.125	206	18.32	465	130	58
BSP-12P	12 ton	Swivel Padded	Polyurethane	7.86	199	8.125	206	18.32	465	131	59
BSD-12P	12 ton	Swivel Diamond	Polyurethane	6.98	177	8.125	206	18.32	465	127	57
BRD-18P	18 ton	Rigid Diamond	Polyurethane	5.63	143	8.125	206	18.32	465	146	66
BSS-18P	18 ton	Swivel Smooth	Polyurethane	6.86	174	8.125	206	18.32	465	153	69
BSP-18P	18 ton	Swivel Padded	Polyurethane	7.86	199	8.125	206	18.32	465	155	70
BSD-18P	18 ton	Swivel Diamond	Polyurethane	6.98	177	8.125	206	18.32	465	146	66
BRD-9N	9 ton	Rigid Diamond	Nylon	5.63	143	8.125	206	18.32	465	111	50
BSS-9N	9 ton	Swivel Smooth	Nylon	6.86	174	8.125	206	18.32	465	119	53
BSP-9N	9 ton	Swivel Padded	Nylon	7.86	199	8.125	206	18.32	465	114	51
BSD-9N	9 ton	Swivel Diamond	Nylon	6.98	177	8.125	206	18.32	465	110	49
BRD-12N	12 ton	Rigid Diamond	Nylon	5.63	143	8.125	206	18.32	465	122	55
BSS-12N	12 ton	Swivel Smooth	Nylon	6.86	174	8.125	206	18.32	465	130	58
BSP-12N	12 ton	Swivel Padded	Nylon	7.86	199	8.125	206	18.32	465	119	53
BSD-12N	12 ton	Swivel Diamond	Nylon	6.98	177	8.125	206	18.32	465	115	52
BRD-18N	18 ton	Rigid Diamond	Nylon	5.63	143	8.125	206	18.32	465	146	66
BSS-18N	18 ton	Swivel Smooth	Nylon	6.86	174	8.125	206	18.32	465	153	69
BSP-18N	18 ton	Swivel Padded	Nylon	7.86	199	8.125	206	18.32	465	132	59
BSD-18N	18 ton	Swivel Diamond	Nylon	6.98	177	8.125	206	18.32	465	128	58



SETS

Product Number	Set Capacity	Dolly Capacity	Top Style Description	Roller Material	Set Includes	Weight	
						lbs.	kg
RS-BSP-36P	36 ton	9 ton	Swivel Padded	Polyurethane	(4) BSP-9P Dollies, (2) Handles	409	181
RS-BSP-48P	48 ton	12 ton	Swivel Padded	Polyurethane	(4) BSP-12P Dollies, (2) Handles	443	200
RS-BSP-72P	72 ton	18 ton	Swivel Padded	Polyurethane	(4) BSP-18P Dollies, (2) Handles	517	234
RS-BSD-36P	36 ton	9 ton	Swivel Diamond	Polyurethane	(4) BSD-9P Dollies, (2) Handles	401	181
RS-BSD-48P	48 ton	12 ton	Swivel Diamond	Polyurethane	(4) BSD-12P Dollies, (2) Handles	435	197
RS-BSD-72P	72 ton	18 ton	Swivel Diamond	Polyurethane	(4) BSD-18P Dollies, (2) Handles	509	230
RS-BSP-36N	36 ton	9 ton	Swivel Padded	Nylon	(4) BSP-9N Dollies, (2) Handles	372	168
RS-BSP-48N	48 ton	12 ton	Swivel Padded	Nylon	(4) BSP-12N Dollies, (2) Handles	395	179
RS-BSP-72N	72 ton	18 ton	Swivel Padded	Nylon	(4) BSP-18N Dollies, (2) Handles	445	201
RS-BSD-36N	36 ton	9 ton	Swivel Diamond	Nylon	(4) BSD-9N Dollies, (2) Handles	364	165
RS-BSD-48N	48 ton	12 ton	Swivel Diamond	Nylon	(4) BSD-12N Dollies, (2) Handles	386	175
RS-BSD-72N	72 ton	18 ton	Swivel Diamond	Nylon	(4) BSD-18N Dollies, (2) Handles	436	197

TRI-GLIDE



TRI-GLIDE

3-POINT MOVING SYSTEM

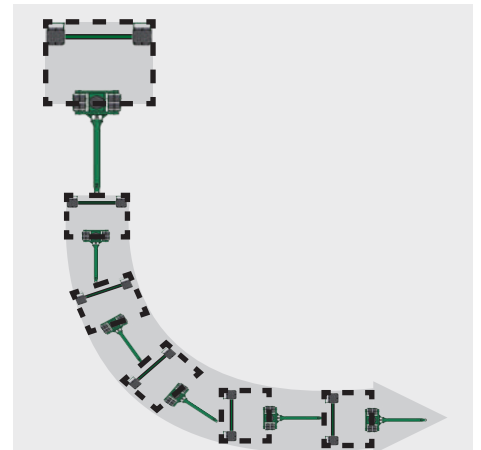
Placing the dollies in a 3-point configuration can stabilize the rollers and prevent them from slipping out, even under pulling and tugging forces.



Using Center of Gravity, the front unit is placed under then load.



Placing the dollies where support is needed ensures the rear dollies will be kept parallel in order to track properly when moving.

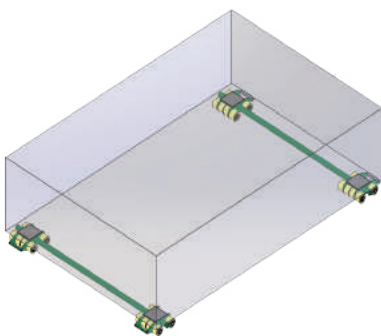


As the load is steered with the front unit, the rear dollies will follow, providing the user with a wide range of mobility.

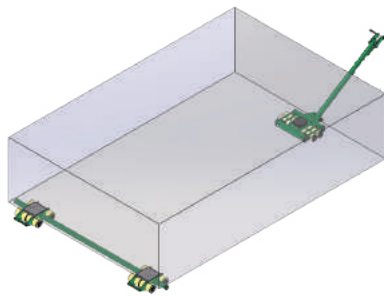
CONFIGURATIONS

The Hilman Tri-Glide System is versatile in that the front and rear units can be combined and configured to further stabilize bulky loads.

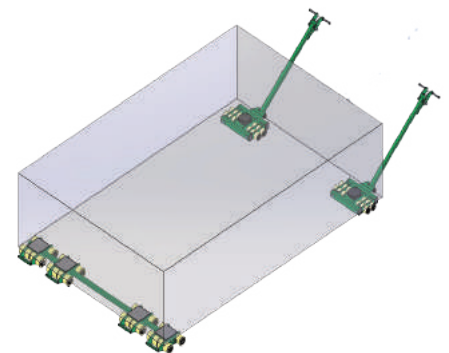
4-Point Moving Solution
Two Rear Units with Spreader Bars



3-Point Moving Solution
One Front Unit
One Rear Unit with Spreader Bar



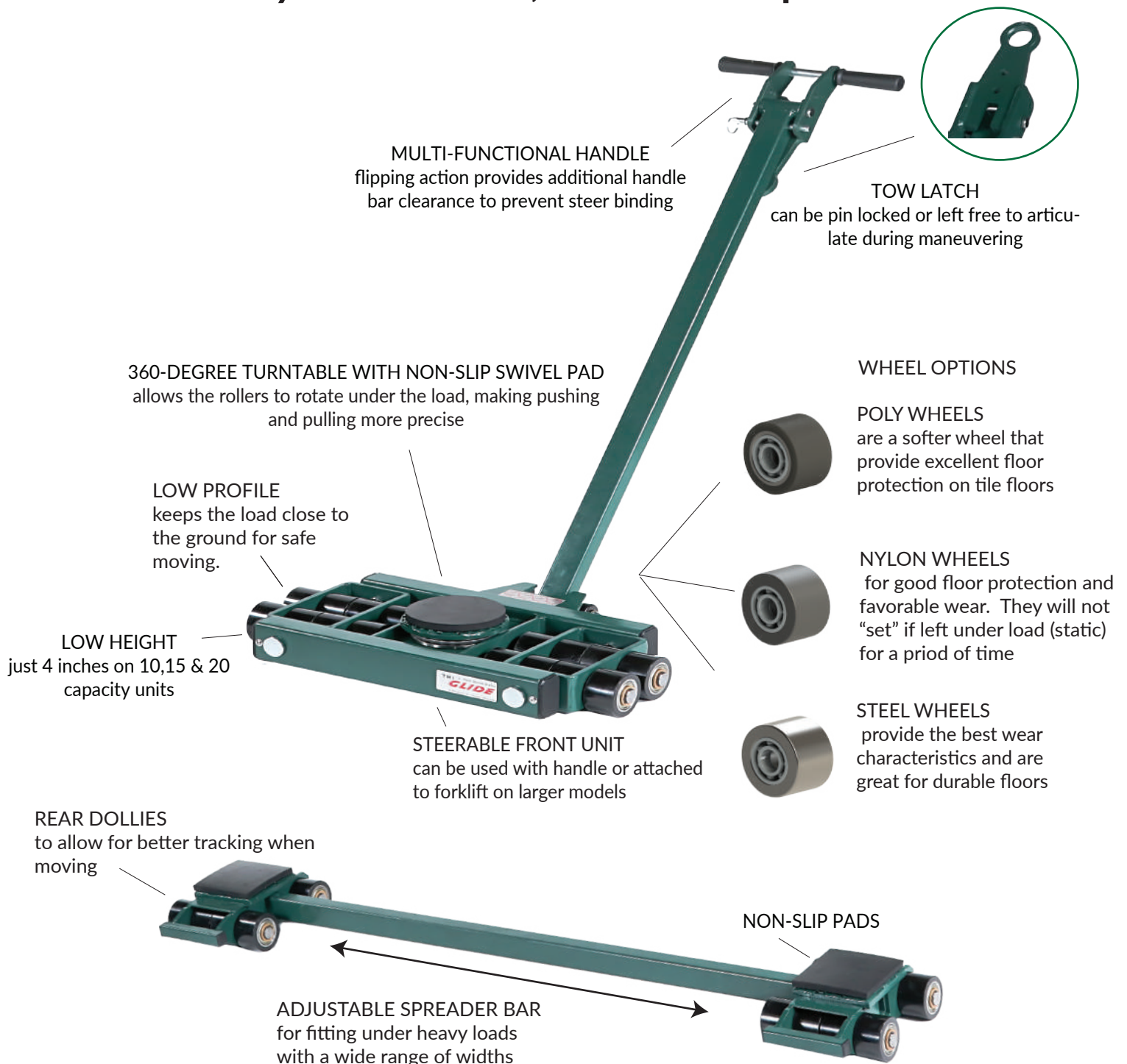
4-Point Moving Solution
Two Front Units
One Rear Unit with Spreader Bar



ADVANTAGES

The Hilman Tri-Glide provides a stable, efficient solution for moving heavy loads. It is designed with a large footprint to spread the weight of the load over a greater area. Our Polyurethane and Nylon rollers are non-marking and can be used on a variety of floor surfaces.

Easy Maneuverability, Maintenance Friendly, Easy to Assemble, No Tools Required!



10, 15 & 20 TON

Hilman Tri-Glide components can be purchased individually to accommodate user preference. All units come with non-slip pads for the front unit and rear dollies.

LOW HEIGHT FLOOR PROTECTION EASY 3 POINT SYSTEM

Wheel Options



Kits

All kits include: (1) Front Unit with Handle and (2) Rear Dollies with a Spreader Bar

Hilman Part #	Capacity	Wheel Type	Wheel Count	Height (w/pad)	Height (w/o pad)	Weights (lbs.)	Handle Length	Alignment Bar
KTG-10N	10 Ton	Nylon	8/8	4.5" (114mm)	4" (102mm)	155	49.5" (1257mm)	60" (1524mm)
KTG-10P	10 Ton	Poly	8/8	4.5" (114mm)	4" (102mm)	161	49.5" (1257mm)	60" (1524mm)
KTG-10S	10 Ton	Steel	8/8	4.5" (114mm)	4" (102mm)	193	49.5" (1257mm)	60" (1524mm)
KTG-15N	15 Ton	Nylon	12/12	4.5" (114mm)	4" (102mm)	168	49.5" (1257mm)	60" (1524mm)
KTG-15P	15 Ton	Poly	12/12	4.5" (114mm)	4" (102mm)	181	49.5" (1257mm)	60" (1524mm)
KTG-15S	15 Ton	Steel	12/12	4.5" (114mm)	4" (102mm)	236	49.5" (1257mm)	60" (1524mm)
KTG-20N	20 Ton	Nylon	16/16	4.5" (114mm)	4" (102mm)	184	49.5" (1257mm)	60" (1524mm)
KTG-20P	20 Ton	Poly	16/16	4.5" (114mm)	4" (102mm)	198	49.5" (1257mm)	60" (1524mm)
KTG-20S	20 Ton	Steel	16/16	4.5" (114mm)	4" (102mm)	260	49.5" (1257mm)	60" (1524mm)

Individual Front

Includes: (1) Front Unit with a multi-functional handle for pulling or towing

Hilman Part #	Capacity	Type	Width (in.)	Height (w/o pad)	Height (w/pad)	Wheel Size	Roller Type	Weight (lbs)
TG-F5N	5 Ton	Front	17.875"	4" (102mm)	4.5" (114mm)	Ø3.13" (79mm)	Nylon	96
TG-F5P	5 Ton	Front	17.875"	4" (102mm)	4.5" (114mm)	Ø3.13" (79mm)	Poly	99
TG-F5S	5 Ton	Front	17.875"	4" (102mm)	4.5" (114mm)	Ø3.13" (79mm)	Steel	115
TG-F7.5N	7.5 Ton	Front	22.6875"	4" (102mm)	4.5" (114mm)	Ø3.13" (79mm)	Nylon	106
TG-F7.5P	7.5 Ton	Front	22.6875"	4" (102mm)	4.5" (114mm)	Ø3.13" (79mm)	Poly	113
TG-F7.5S	7.5 Ton	Front	22.6875"	4" (102mm)	4.5" (114mm)	Ø3.13" (79mm)	Steel	145
TG-F10N	10 Ton	Front	26.6875"	4" (102mm)	4.5" (114mm)	Ø3.13" (79mm)	Nylon	113
TG-F10P	10 Ton	Front	26.6875"	4" (102mm)	4.5" (114mm)	Ø3.13" (79mm)	Poly	120
TG-F10S	10 Ton	Front	26.6875"	4" (102mm)	4.5" (114mm)	Ø3.13" (79mm)	Steel	151

Individual Rear

Includes: (2) Rear dollies with a spreader bar

Hilman Part #	Capacity	Type	Width (in.)	Height (w/o pad)	Height (w/pad)	Wheel Size	Roller Type	Weight (lbs)
TG-R5N	5 Ton	Rear	6.25"	4" (102mm)	4.5" (114mm)	Ø3.13" (79mm)	Nylon	59
TG-R5P	5 Ton	Rear	6.25"	4" (102mm)	4.5" (114mm)	Ø3.13" (79mm)	Poly	62
TG-R5S	5 Ton	Rear	6.25"	4" (102mm)	4.5" (114mm)	Ø3.13" (79mm)	Steel	78
TG-R7.5N	7.5 Ton	Rear	7.6875"	4" (102mm)	4.5" (114mm)	Ø3.13" (79mm)	Nylon	62
TG-R7.5P	7.5 Ton	Rear	7.6875"	4" (102mm)	4.5" (114mm)	Ø3.13" (79mm)	Poly	68
TG-R7.5S	7.5 Ton	Rear	7.6875"	4" (102mm)	4.5" (114mm)	Ø3.13" (79mm)	Steel	91
TG-R10N	10 Ton	Rear	9.6875"	4" (102mm)	4.5" (114mm)	Ø3.13" (79mm)	Nylon	71
TG-R10P	10 Ton	Rear	9.6875"	4" (102mm)	4.5" (114mm)	Ø3.13" (79mm)	Poly	78
TG-R10S	10 Ton	Rear	9.6875"	4" (102mm)	4.5" (114mm)	Ø3.13" (79mm)	Steel	109

24-80 Tons



Kits

All kits include: (1) Front Unit with Handle and (2) Rear Dollies with a Spreader Bar

Hilman Part #	Capacity	Wheel Type	Wheel Count	Height (w/pad)	Height (w/o pad)	Weight (lbs)	Handle Length	Alignment Bar
KTG-24P	24 Ton	Poly	8/8	5.5" (140mm)	5.25" (133mm)	384	43.75" (1162mm)	72" (1829mm)
KTG-40P	40 Ton	Poly	16/16	5.5" (140mm)	5.25" (133mm)	467	43.75" (1162mm)	72" (1829mm)

Individual Front

Includes: (1) Front Unit with a Tow Handle

Hilman Part #	Capacity	Type	Width (in.)	Height (w/pad):	Height (w/o pad):	Wheel Size	Roller Type	Weight (lbs)
TG-F12P	12 Ton	Front	26.875	5.5" (140mm)	5.25" (133mm)	Ø4.25" (108mm)	Poly	24
TG-F20P	20 Ton	Front	39.1875	5.5" (140mm)	5.25" (133mm)	Ø4.25" (108mm)	Poly	286

Individual Rear

Includes: (2) Rear Dollies with a Spreader Bar

Hilman Part #	Capacity	Type	Width (in.)	Height (w/pad):	Height (w/o pad):	Wheel Size	Roller Type	Weight (lbs)
TG-R12P	12 Ton	Rear	8.25	5.5" (140mm)	5.25" (133mm)	Ø4.25" (108mm)	Poly	135
TG-R20P	20 Ton	Rear	14.1875	5.5" (140mm)	5.25" (133mm)	Ø4.25" (108mm)	Poly	181



Kits

All kits include: (1) Front Unit with Handle and (2) Rear Dollies with a Spreader Bar

Hilman Part #	Capacity	Wheel Type	Wheel Count	Height (w/pad):	Height (w/o pad):	Weight (lbs)	Handle Length	Alignment Bar
KTG-60P	60 Ton	Poly	24/24	7.75" (197mm)	7.00" (178mm)	981	45.125" (1146mm)	96" (2438mm)
KTG-80P	80 Ton	Poly	32/32	7.75" (197mm)	7.00" (178mm)	1095	45.125" (1146mm)	96" (2438mm)

Individual Front

Includes: (1) Front Unit with a Tow Handle

Hilman Part #	Capacity	Type	Width (in.)	Height (w/pad):	Height (w/o pad):	Wheel Size	Roller Type	Weight (lbs)
TG-F30P	30 Ton	Front	48.0625	7.75" (197mm)	7.00" (178mm)	Ø5.51" (140mm)	Poly	603
TG-F40P	40 Ton	Front	56.0625	7.75" (197mm)	7.00" (178mm)	Ø5.51" (140mm)	Poly	667

Individual Rear

Includes: (2) Rear Dollies with a Spreader Bar

Hilman Part #	Capacity	Type	Width (in.)	Height (w/pad):	Height (w/o pad):	Wheel Size	Roller Type	Weight (lbs)
TG-R30P	30 Ton	Rear	17.25	7.75" (197mm)	7.00" (178mm)	Ø5.51" (140mm)	Poly	378
TG-R40P	40 Ton	Rear	21.0625	7.75" (197mm)	7.00" (178mm)	Ø5.51" (140mm)	Poly	428

OMNI-SKATE



OMNI-SKATE

The Hilman OMNI-SKATE is a multi-directional load skate capable of traveling in any direction and rotating on axis. Designed, engineered and manufactured in the USA, the OMNI-SKATE optimizes your move while being the most reliable and rugged solution in the industry.

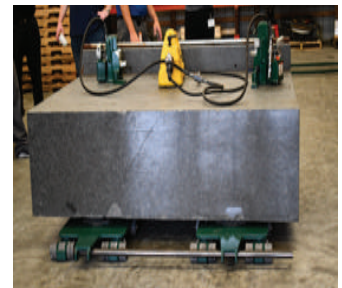
3, 6, 8 & 10 TONS



Omni-Skates - 360 Degree
Maneuverability - Move heavy loads in
tight spaces and around sharp corners in
any direction.

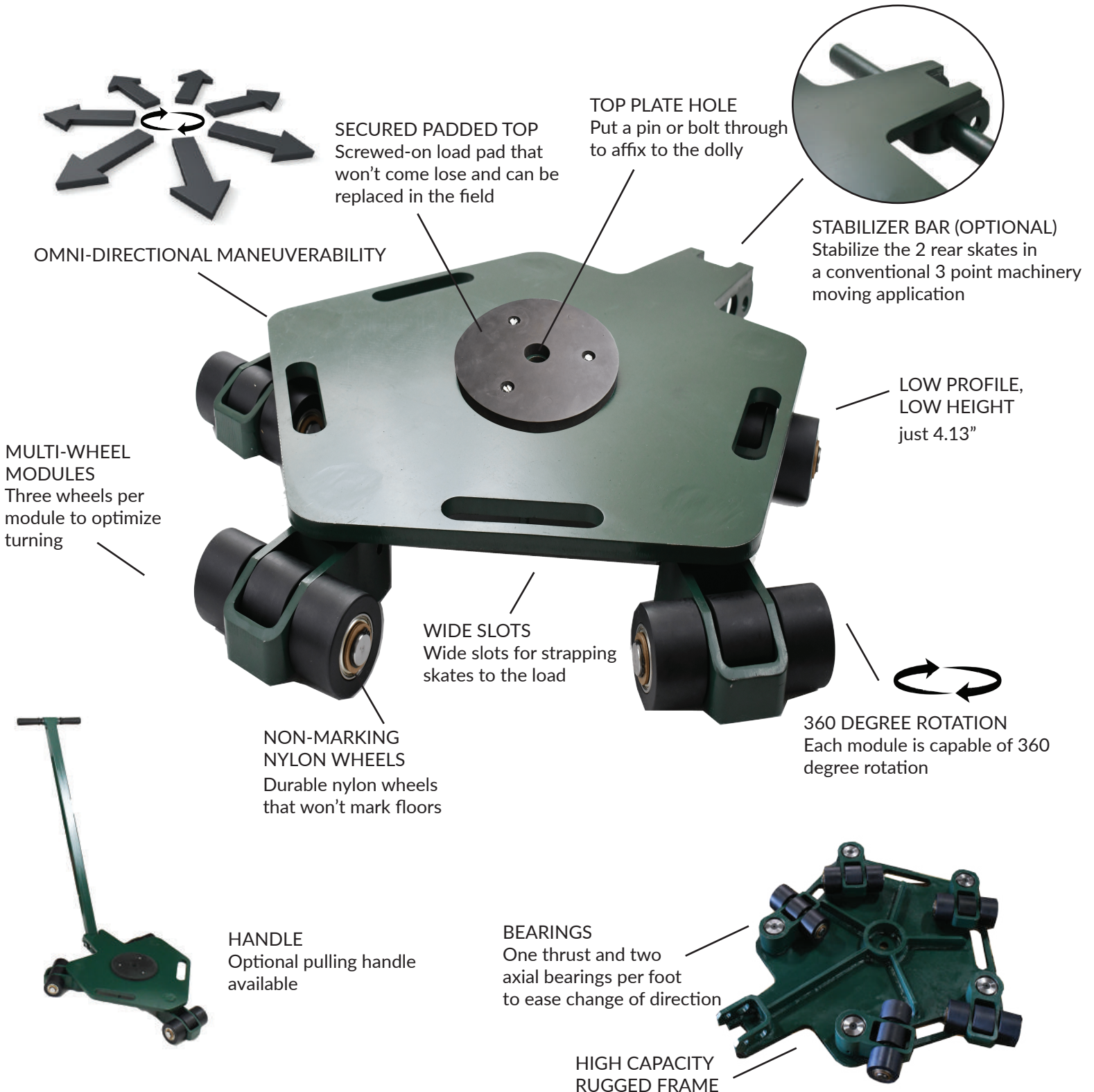
LIFT. SET. ROLL

Lift up the back end of the load first using one or two toe jacks. You can do this manually or with a hydraulic pump. If you use just one jack, lift the load directly next to the front dolly. You can also use 4 toe jacks to lift entire load simultaneously. Roll the rear dollies under the load then lower the load onto the dollies. Repeat for front dollies, remove toe jacks and you are ready to move!



FEATURES

The Hilman OMNI-SKATE is available in capacities of 3, 6, 8 and 10 tons. They can also be combined into sets of 4 for capacities up to 40 tons!



SPECIFICATIONS



	OMNI-3	OMNI-6	OMNI-8	OMNI-10
LOAD CAPACITY	3 ton	6 ton	8 ton	10 ton
WHEEL TYPE	NYLON	NYLON	NYLON	NYLON
HEIGHT	4.63 in	4.63 in	4.63 in	4.63 in
WIDTH	18.937"	24.125"	22.9375"	31.4375"
LENGTH	22.562"	30.125"	31.375"	38.75"
WHEEL DIAMETER	Ø 3.13	Ø 3.13	Ø 3.13	Ø 3.13
NUMBER OF WHEELS	6	9	12	15
PAD DIAMETER	Ø 8"	Ø 8"	Ø 8"	Ø 8"
WEIGHT	68 lb/31 kg	111 lb /50 kg	139 lb/63 kg	185 lb/84 kg

ACCESSORIES

Handle for pulling

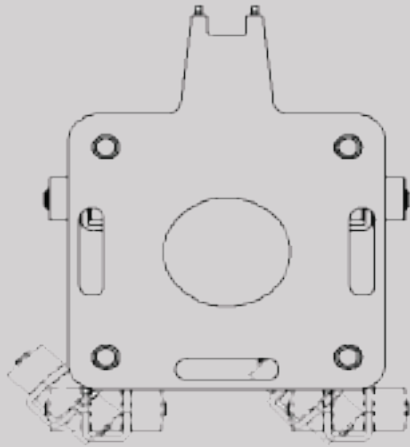


Alignment Bar with Coupling

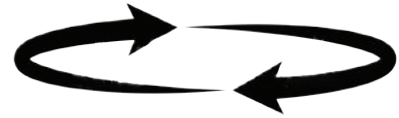


OMNI-SKATE

The Hilman Omni-Skate provides a stable, efficient solution for moving heavy loads.



360 DEGREE ROTATION



ALIGNMENT BAR

Combine dollies into pairs using an adjustable alignment bar.

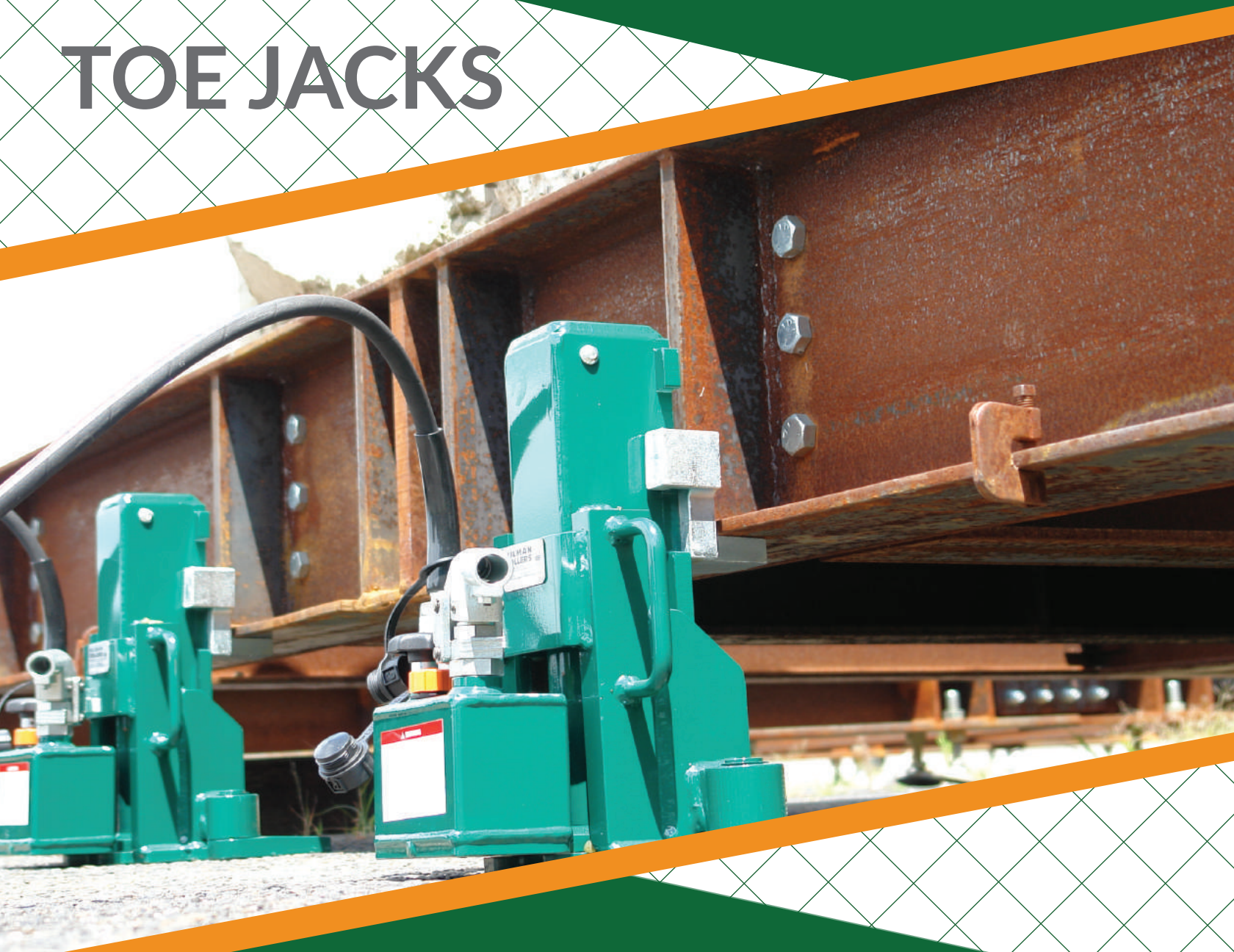


CONFIGURATIONS

Our dollies can be configured in a number of ways including attaching them to the Powerattack or using them in conjunction with our TK-EVO or Trakstopper.

Images are for representation purposes only. Actual product may differ.

TOE JACKS



TOE JACKS

Hilman Toe Jacks allow you to get under and lift equipment. Since there are lifting points on both the toe and the top of the jack these are the perfect complement to our chain action rollers and dollies.

5 & 10 TON



LOW GROUND CLEARANCE
-Our Toe Jacks can lift equipment with just over 1" of ground clearance (1.06" to be exact).

10 & 25 DELUXE



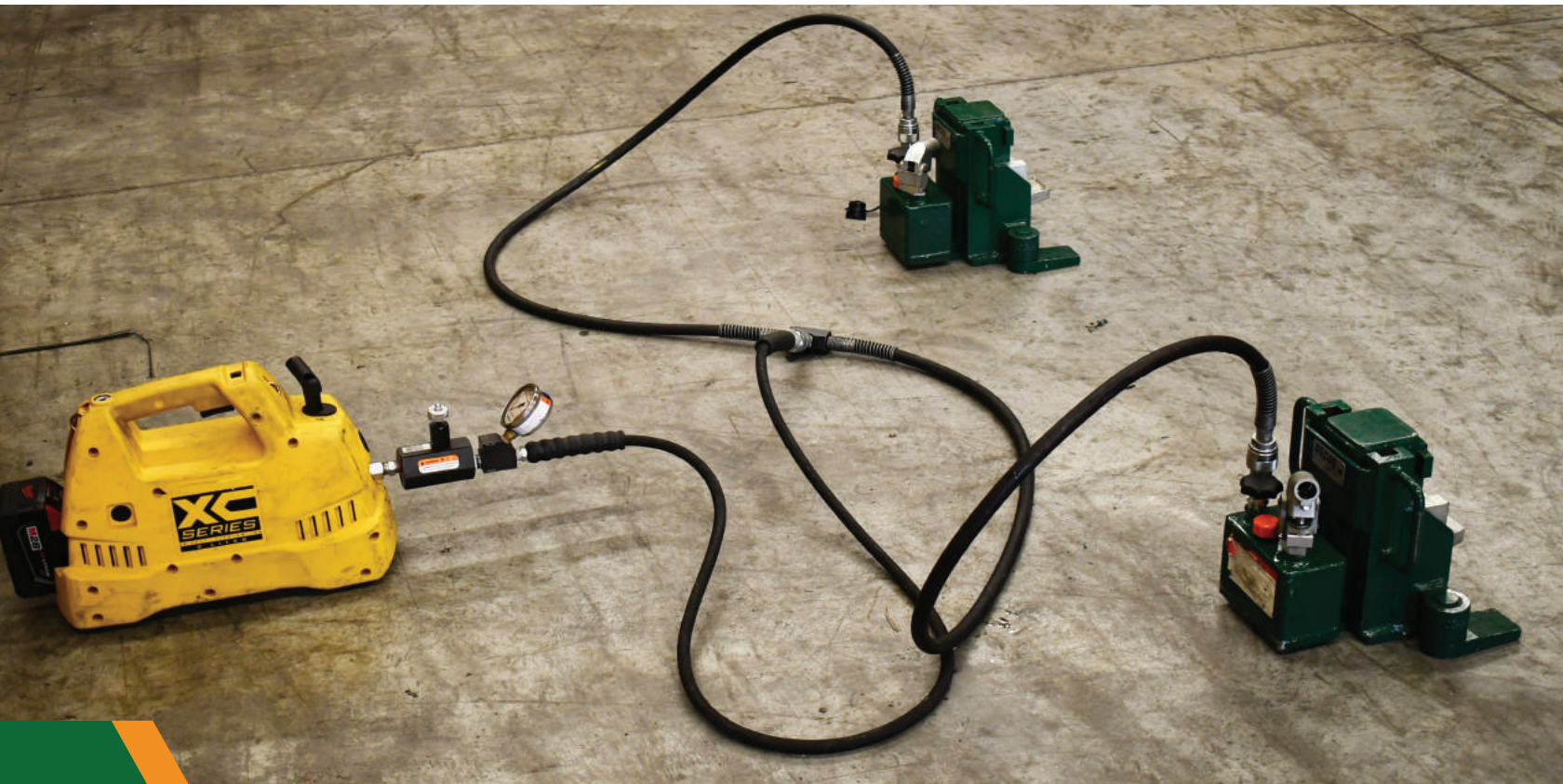
HIGH QUALITY LIFTING TOE
-Hilman Deluxe Jacks feature a high quality lifting toe that can be adjusted to several heights to accommodate different lift points.

20 & 50 TON KITS



HYDRAULIC PUMP - our quality toe jacks kits include hydraulic pumps and have everything you need to lift equipment safely and efficiently

**EASY LIFTING!
USE MANUALLY OR CONNECT TO PUMP!**



TOE JACKS

LOW CLEARANCE

Our Toe Jacks can lift equipment with just over 1" of ground clearance (1.06" to be exact).

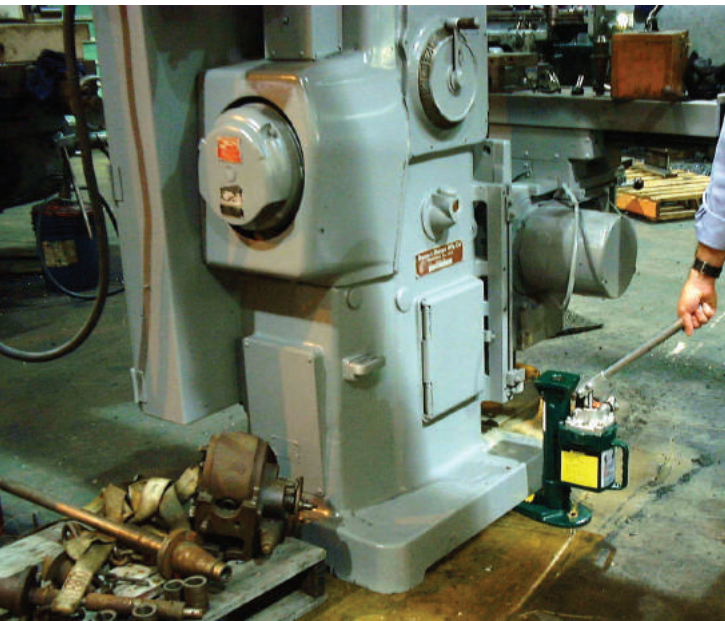
MOVE EASILY

Our 5 & 10 models can operate both vertically and horizontally. Since the base, toe and pump swivel independently of each other, you can fit the jack in confined spaces.

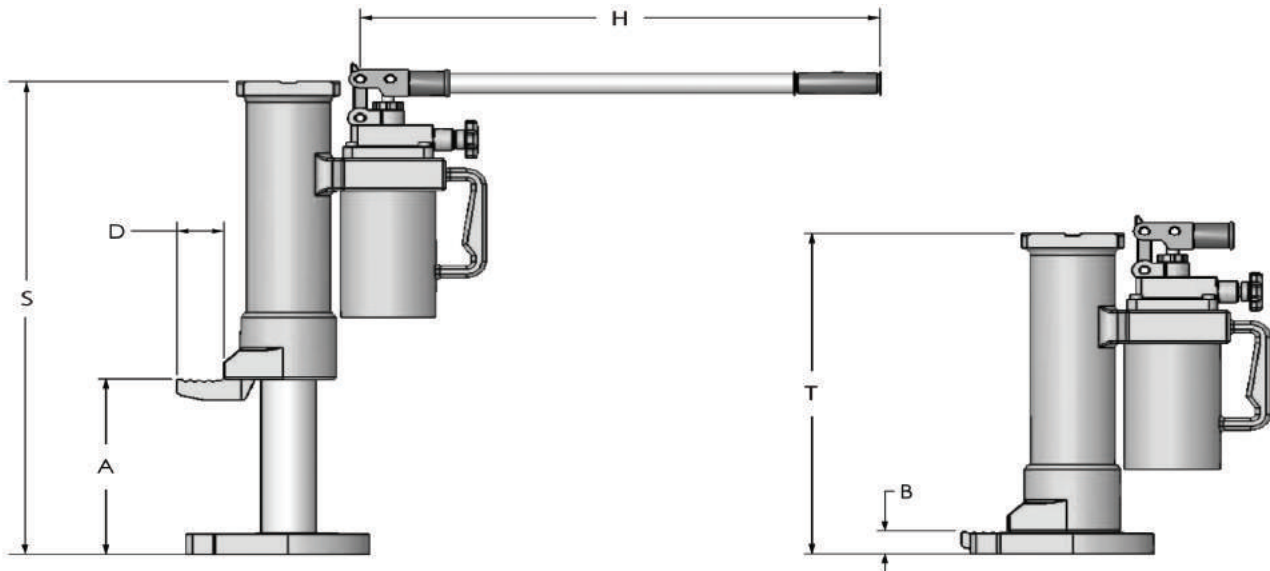
Our Toe Jacks comply with ASME B30.1 standards.



TOE JACKS



MODEL	CAPACITY	MAXIMUM LIFTING HEIGHT		PICKING UP POSITION HEIGHT		TOE DEPTH (D)	HANDLE LENGTH (H)	FORCE ON LEVER AT MAXIMUM LOAD		WEIGHT
		At Base (A)	At Top (S)	At Base (B)	At Top (T)					
		inches (mm)	inches (mm)	inches (mm)	inches (mm)					
HTJ5	5 TON	8 (206)	22.5 (574)	1 (25)	14.5 (368)	2.0 (55)	17.75 (451)	85.5 (380)	54 (24.5)	
HTJ10	10 TON	9 (233)	25.5 (646)	1 (25)	16.25 (413)	2.0 (55)	17.75 (451)	90.0 (400)	76 (34.5)	



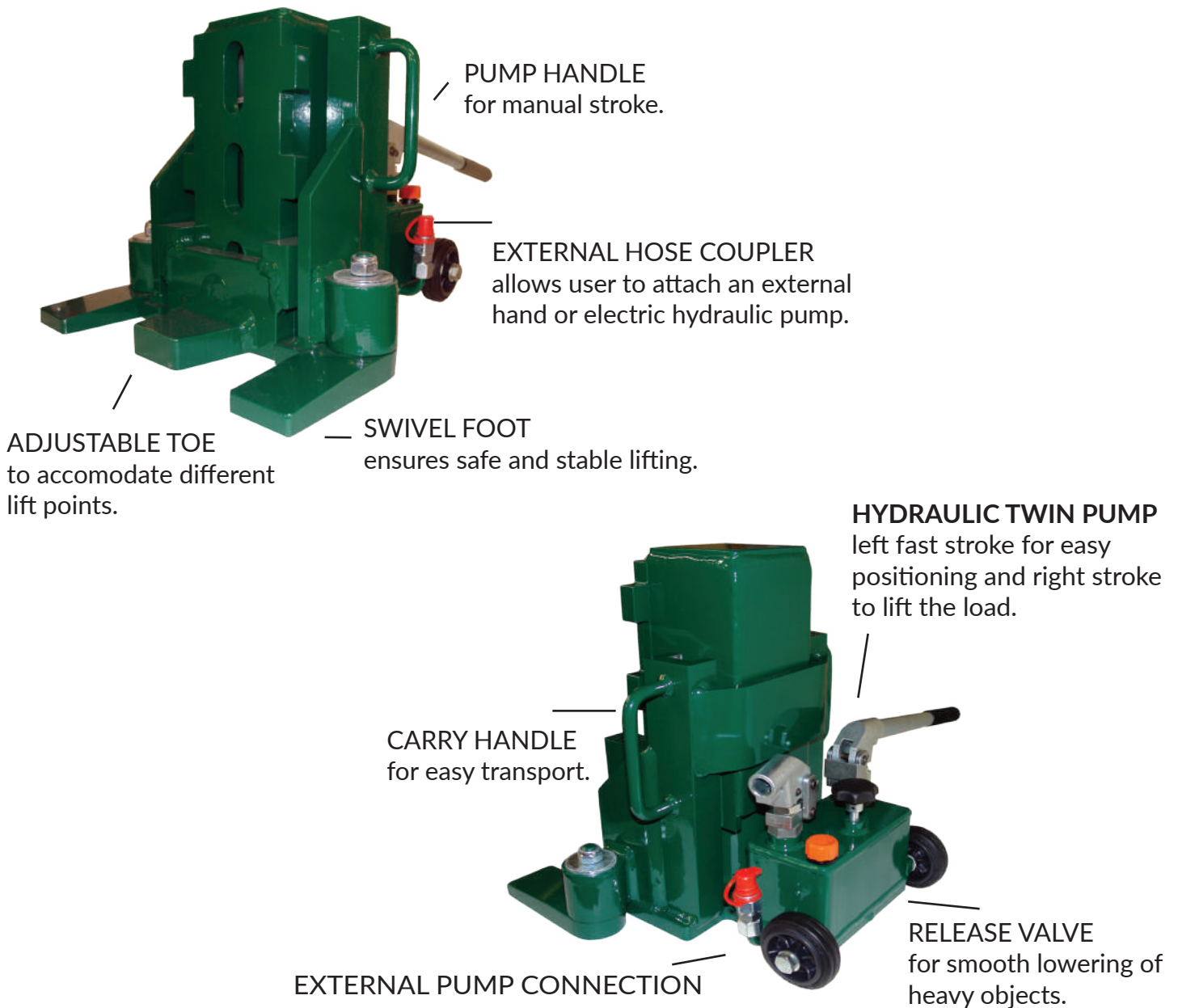
DELUXE JACKS

HIGH QUALITY LIFTING TOE

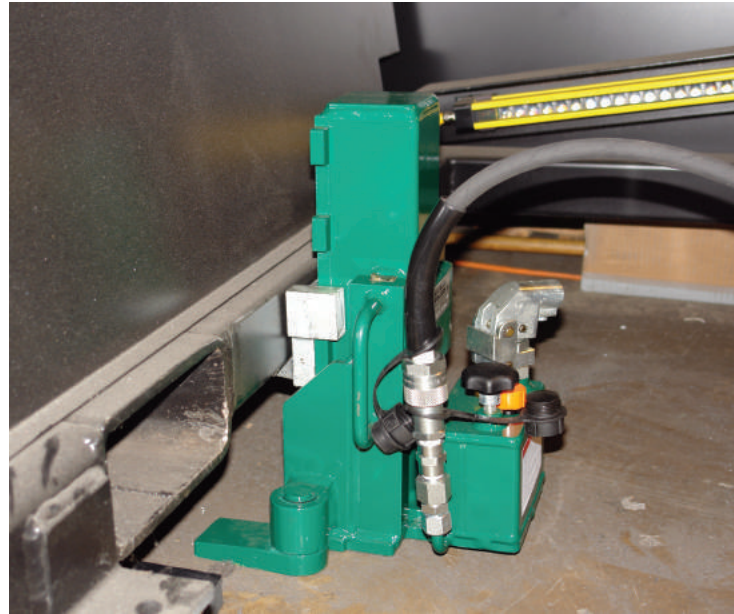
Hilman Deluxe Jacks feature a high quality lifting toe that can be adjusted to several heights to accommodate different lift points. Strong lift legs and a release valve combine to make stable lifting and smooth lowering of heavy objects.

HYDRAULIC PUMP

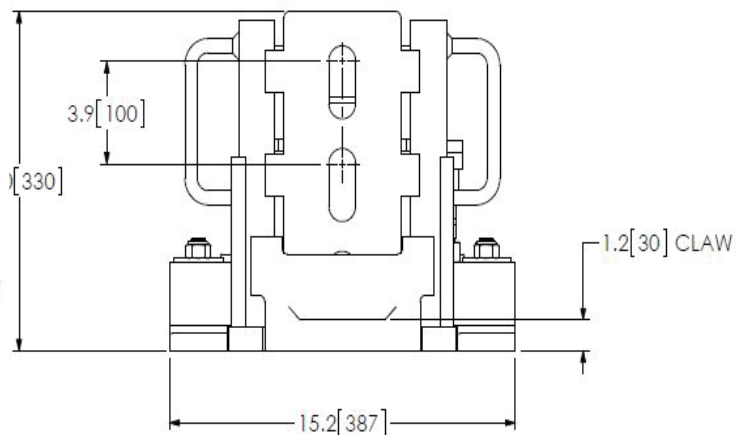
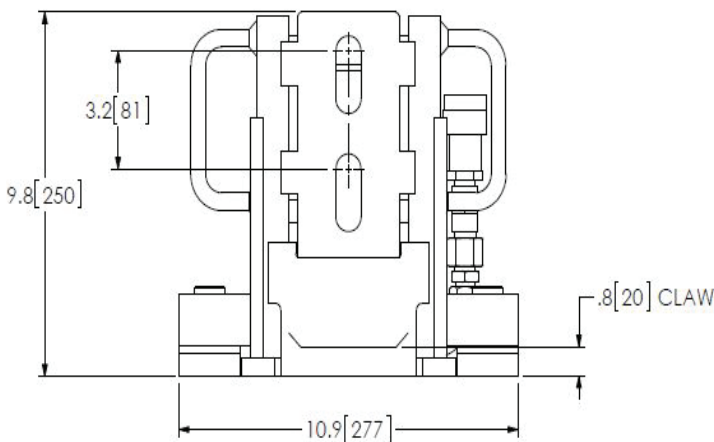
Deluxe Jacks come with an external hose coupler that allows the user to attach an external hand or electric hydraulic pump for easy and safe positioning.



DELUXE

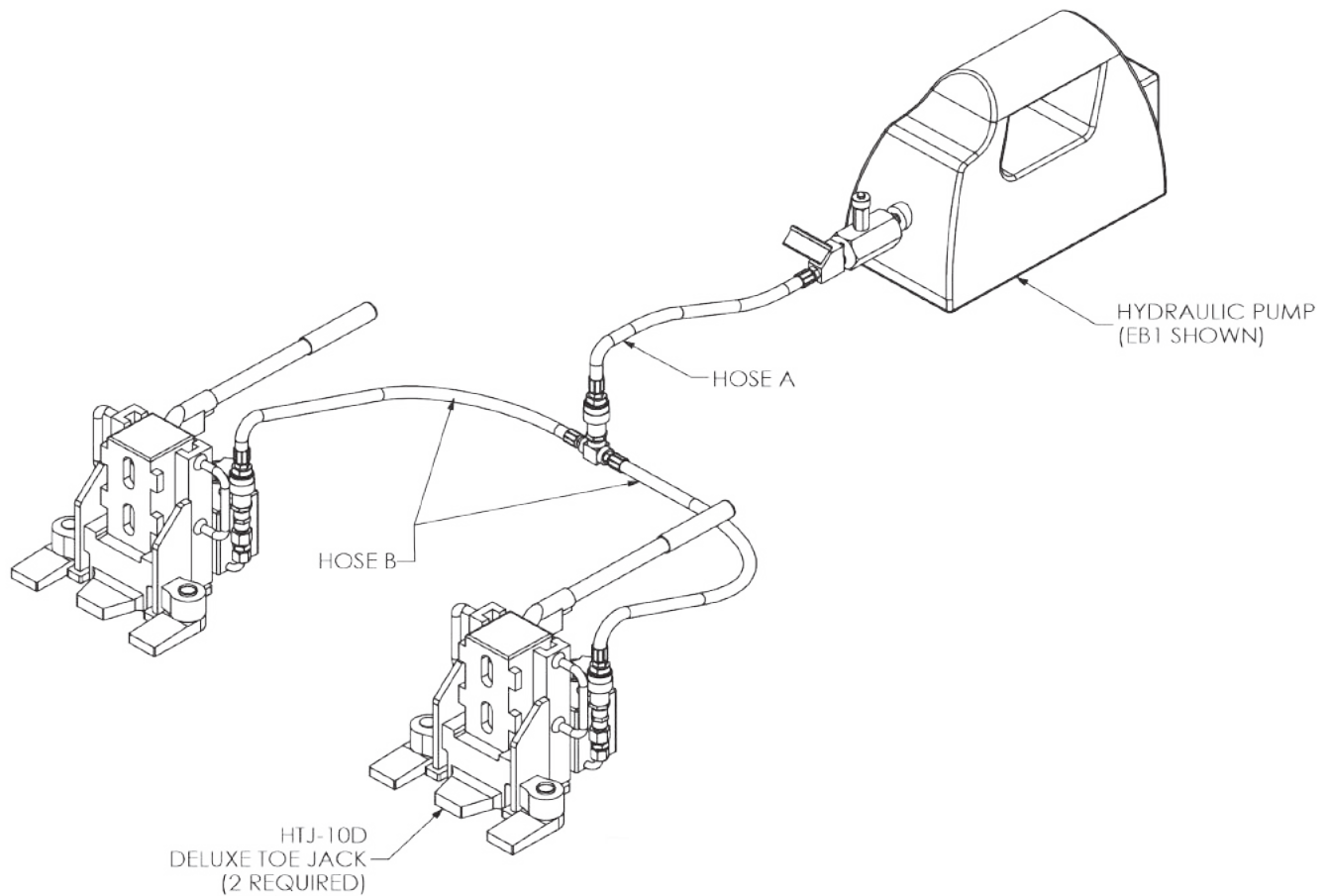


MODEL	CAPACITY	CLAW HEIGHT		ADJUSTABILITY		STROKE		LENGTH (L)		WIDTH (W)		HEIGHT (H)		WEIGHT	
		inches	(mm)	inches	(mm)	inches	(mm)	inches	(mm)	inches	(mm)	inches	(mm)	lb.	(kg)
HTJ-10D	10 TON	0.79"	(20)	3 x 3.19"	(3 x 81)	5.5"	(140)	10.67	(271)	10.9	(277)	9.8	(250)	62	(28)
HTJ-25D	25 TON	1.18"	(30)	3 x 3.94"	(3 x 100)	5.5"	(140)	15.28	(388)	15.24	(387)	13.0	(330)	159	(72)



KITS

Everything you need to lift your load with minimal effort. This complete kit features battery powered hydraulic pump, optional manual operation of jacks, adjustable toe, stabilizing feet, release valve for smooth lowering. System comes complete with two 10 ton deluxe hydraulic jacks (manual or automatic operation), portable hydraulic battery powered pump and hydraulic hose assembly with 10' of hose for each jack. Available in 20 & 50 tons. Custom hose length also available.



POWERATTACK



POWERATTACK

The PowerAttack is an innovative way to move loads on skates or trolleys up to 30 tons instead of forklifts!

Reliable, Powerful, Easy to Maneuver!

KPA-25C



Corded-25 Ton Capacity

Powered by an electric cable either with 110V or 230V (PA-25C-230V) drive motor

KPA-30CC

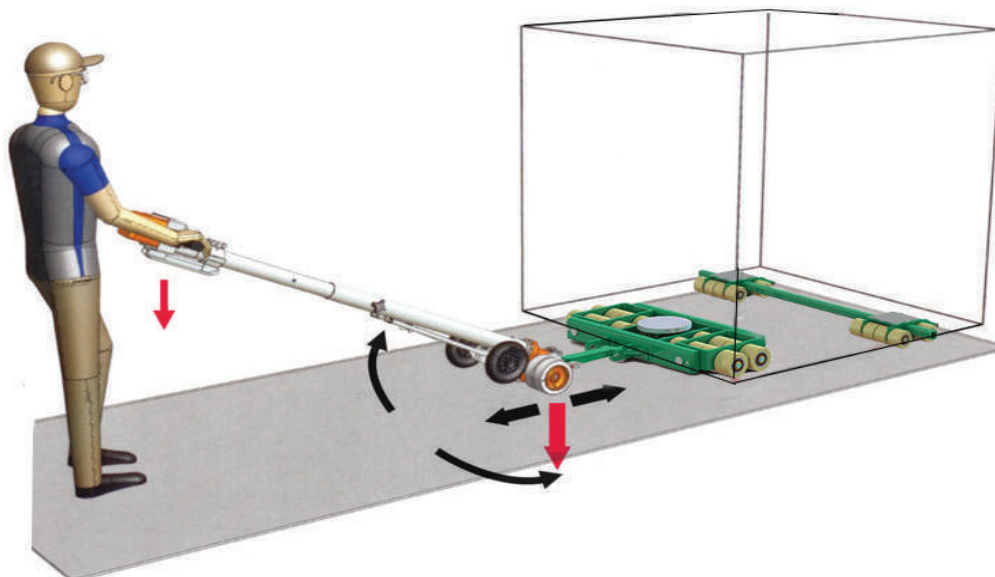


Battery Powered-30 Ton Capacity

Powered by a 24V synchronous motor with 1kw output, generating 800Nm to drive-wheels

APPLIED MECHANICS

The PowerAttack uses lever and traction to move heavy loads while it is attached to a steerable skate such as the Hilman Tri-Glide with an adaptor. Rear dollies are used for good grip. The handle extends to provide ample leverage giving traction to the powered wheels. The PowerAttack can push or pull up to 30 tons.



*Images are for representation purposes only. Actual product configuration and support points will differ based on the load.

ADVANTAGES

Each Powerattack comes with an adjustable load toe, an L Adaptor and an adaptor to connect to a front skate. The battery version also includes 2 batteries and charge unit.



Hilman Part #	KPA-25C	KPA-25C-230V	KPA-30CC
Total Capacity	25 tons	25 tons	30 tons
Telescopic Length	65" (1650 mm) - 84" (2150 mm)	65" (1650 mm) - 84" (2150 mm)	65" (1650 mm) - 84" (2150 mm)
Width	15" (380 mm)	15" (380 mm)	15" (380 mm)
Weight	110 lbs (50 kg)	110 lbs (50 kg)	165 lbs (75 kg)

*Loads can be moved up to 30 tons depending on floor surface, types of skates, etc.

FEATURES



CLEAN ROOM MOVING

The Battery PowerAttack is a great option for clean room moving or in spaces where emissions is an issue. The soft polyurethane wheels are non-marking and prevent damage to floors.

CUSTOM ATTACHMENTS

The PowerAttack can be used in combination with other Hilman items such as the Tri-Glide. Custom attachments are also available if needed for a specific application.



UNIVERSAL MACHINERY MOVING KITS

This versatile and easy to use 3 point moving system is designed to meet the majority of your load moving requirements. The kit includes everything you need to move loads easily, effectively and safely.

- Jacking package allows easy lifting of load
- Three-point machine skates provide a stable rolling platform
- Powered load mover makes it easy to move your load into its new position with the push of a button
- Poly wheels offer durability and floor protection



Essential Package

Great Value for Efficient Load Moving!

Includes:

- (1) Corded Power Load Mover
- (1) 3 Point Moving Dolly
- (2) Rear Dollies with Adjustable Spreader Bar
- (2) 10 Ton Manual Toe Jacks

Deluxe Package

Cordless, Easy to Use!

Includes:

- (1) Battery Powered Load Mover
- (2) Batteries
- (1) Charger
- (1) 3 Point Moving Dolly
- (2) Rear Dollies with Adjustable Spreader Bar
- (2) 10 Ton Hydraulic Jacks
- (2) 10 ft Hoses
- (1) Battery Powered Hydraulic Pump



EXPERIENCE

Hilman designs, engineers and manufactures complete turnkey custom solutions tailor-made to your project needs. Our engineers work closely with our customers on unique projects around the world to supply them with products that integrate seamlessly into their applications for a perfect move!

1000'S OF PROVEN DESIGNS





HILMAN INC.
12 Timber Lane
Marlboro, New Jersey 07746
USA
Phone: +1-732-462-6277
E-mail: sales@hilmanrollers.com
Website: www.hilmanrollers.com

ISO 9001