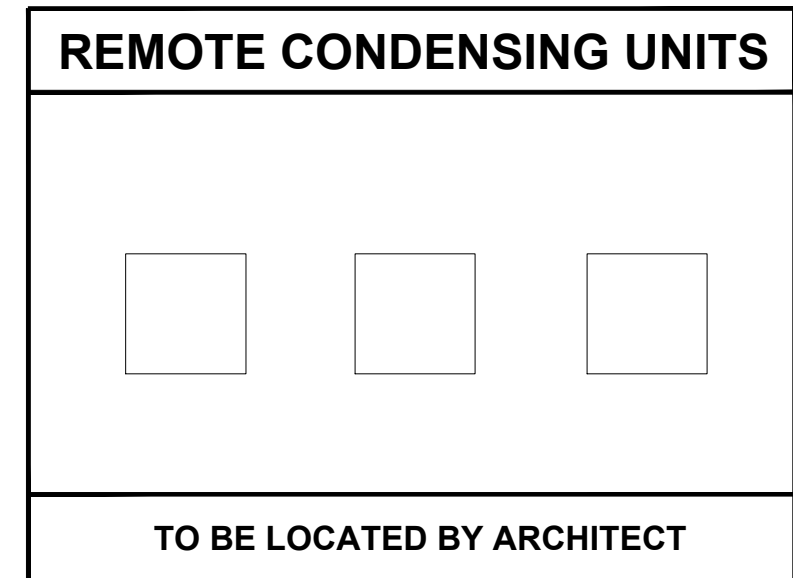
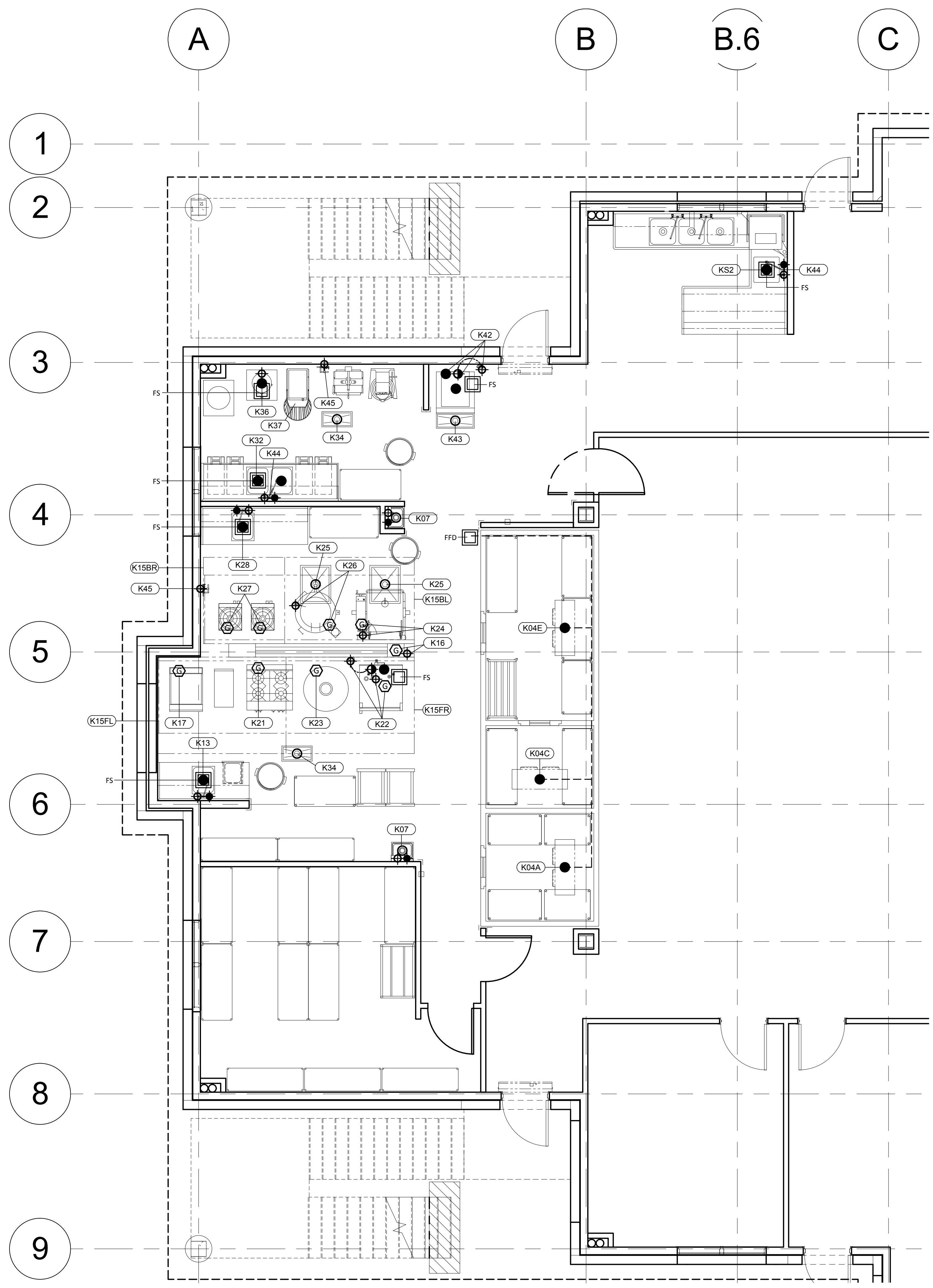




Project

FOODSERVICE EQUIPMENT LAYOUT  
**RADHA KRISHNA TEMPLE**  
 1450 N. WATERS ROAD  
 ALLEN, TX 75013



NOTE:  
 SEE SHEET FS-1UL FOR UTILITY LOAD SCHEDULE

- ### MECHANICAL NOTES
- WORK DESCRIBED IN THESE NOTES IS TO BE PERFORMED UNDER DIVISION 14 (PLUMBING) AND DIVISION 15 (HVAC)
- THIS DRAWING LOCATES FINAL MECHANICAL POINTS OF CONNECTION FOR EACH FOODSERVICE EQUIPMENT ITEM. IT DOES NOT INDICATE UTILITY ROUGH-IN LOCATIONS, LOCATIONS, SIZES, AND HEIGHTS ABOVE THE FLOOR ARE APPROXIMATELY AS THEY WILL OCCUR ON EQUIPMENT ITEMS SHOWN. THE DESIGN OF SYSTEMS TO ACCOMMODATE THESE REQUIREMENTS IS TO BE IN ACCORDANCE WITH ALL APPLICABLE CODES AND MEET WITH THE APPROVAL OF ALL GOVERNING AUTHORITIES.
  - UTILITIES SHOWN ARE FOR FOODSERVICE EQUIPMENT ITEMS ONLY. THIS DRAWING MUST BE USED IN CONJUNCTION WITH THE MECHANICAL DRAWINGS FOR OTHER REQUIRED UTILITIES.
  - CONCEAL ALL UTILITIES (GAS, WATER AND STEAM LINES) IN WALLS AND STUB-OUT OF WALLS AS REQUIRED FOR CONNECTIONS. DO NOT STUB OUT OF THE FLOOR UNLESS INDICATED ON PLANS AND/OR RUN EXPOSED ON THE FACE OF THE WALL.
  - ALL EXPOSED PIPING AND FITTINGS TO BE STAINLESS STEEL OR CHROME PLATED BRASS IF POSSIBLE. IF USED, COPPER LINES AND PVC DRAIN PIPES SHOULD BE PAINTED SILVER GLOSS WHERE EXPOSED.
  - ALL HORIZONTAL PIPING RUNS EXTENDED TO AND CONNECTED TO EQUIPMENT ITEMS SHALL BE AT THE HIGHEST PRACTICAL ELEVATION, BUT NOT LESS THAN 6" (150MM) ABOVE THE FINISHED FLOOR SO AS TO PROVIDE CLEARANCE FOR CLEANING.
  - PROVIDE WATER AND GREASE PROOF EXHAUST DUCTS FROM VENT CONNECTIONS OF DISHWASHING MACHINES, EXHAUST HOODS, AND VENTILATORS.
  - PROVIDE FIRE EXTINGUISHING SYSTEM IN ALL GREASE EXHAUST DUCTS AS REQUIRED.
  - N/A
  - FOR FIRE SUPPRESSION SYSTEM, A MECHANICAL GAS SHUT OFF VALVE OR ELECTRICAL SOLENOID SHUT OFF VALVE WITH MOMENTARY POWER INTERRUPTION DEVICE SHALL BE PROVIDED LOOSE BY KITCHEN EQUIPMENT CONTRACTOR FOR FIELD INSTALLATION IN SUPPLY LINE FOR GAS FUELED EQUIPMENT ITEMS.
  - PROVIDE GREASE TRAPS WITH TOP FLUSH WITH TOP OF FINISHED FLOOR UNLESS PROVIDED OUTSIDE FOODSERVICE AREA. GREASE TRAPS SHALL NOT BE LOCATED BENEATH ANY FOODSERVICE EQUIPMENT. GREASE TRAPS SIZED AND LOCATED BY MECHANICAL ENGINEERS.
  - PROVIDE EACH AIR-COOLED REFRIGERATION SYSTEM WITH A MINIMUM AIR SUPPLY OF 1,000 CFM (472 L/S) PER HORSE POWER AND ADEQUATE EXHAUST TO KEEP AREA ADJACENT TO COMPRESSOR AND/OR COMPRESSOR ROOM TEMPERATURE BELOW 90°F (32°C).
  - N/A
  - N/A
  - ALL INTERCONNECTED WATER LINE (IWL) RUNS ARE FOR DESIGN INTENT ONLY AND DO NOT REPRESENT ACTUAL FIELD RUNS. REFER TO UTILITY LOAD SCHEDULE SHEETS FOR INFORMATION ON POINT OF CONNECTIVITY.
  - N/A
  - GAS REGULATOR AND INCOMING GAS LINE TO BE INSTALLED AS TIGHT AS POSSIBLE TO WALL. SEE DETAIL CM 1.04.1
  - PROVIDE AND INSTALL BACKFLOW PREVENTERS AS REQUIRED.
  - KITCHEN EQUIPMENT TRADE TO SUPPLY GAS REGULATORS (FOR COOKING EQUIPMENT ONLY), QUICK DISCONNECT HOSES, FAUCETS, OVERFLOWS AND LEVER DRAIN VALVES FOR PLUMBING TRADE TO COMPLETE AND INSTALL. ALL DIRECT/INDIRECT WASTE LINES, INTERCONNECTIONS AND FINAL CONNECTIONS BY PLUMBING TRADE.
  - REFRIGERATION LINES (VALVES, CONTROLS, INSULATION, ETC.) FOR WALK-INS AND REMOTE REFRIGERATED UNITS SUPPLIED AND INSTALLED BY KITCHEN EQUIPMENT TRADE. GC TO PROVIDE PENETRATIONS AND SLEEVES IN FLOOR, ROOF AND WALL FOR LINE RUNS AND SEAL OPENINGS. PLUMBING TRADE TO PROVIDE AND INSTALL INDIRECT DRAIN LINES AND TRAPS FROM EVAPORATOR COILS AND SEAL PENETRATIONS IN WALK-IN PANELS.
  - N/A
  - PLUMBING TRADE/ GAS COMPANY TO PROVIDE AND INSTALL GAS REGULATOR TO DELIVER ADEQUATE GAS PRESSURE (5"-10" WC, 1/2#) IN MAIN GAS LINE SERVING COOKING LINE.

### FIRE EXTINGUISHING SYSTEM NOTES

FM1	WET CHEMICAL PIPING TO CONNECTION AT VENTILATOR BY KITCHEN EQUIPMENT TRADE.
FM2	IF REQUIRED BY LOCAL MECHANICAL JURISDICTIONS, PLUMBING TRADE TO PROVIDE BY -PASS AT GAS SOLENOID VALVE.

### MECHANICAL SYMBOLS

◆	HW	HOT WATER
⊕	CW	COLD WATER
●	IW	INDIRECT WASTE
○	DW	DIRECT WASTE
⊙	G	GAS CONNECTION
△	CWT	COOLING WATER TOWER
△	CWTR	COOLING WATER TOWER RETURN
⊞	SS	STEAM SUPPLY
⊞	CSR	CONDENSATE STEAM RETURN
⊞	FS/FFD	FLOOR SINK/FUNNEL FLOOR DRAIN
⊞	AGD	AIR GAP DRAIN
⊞	AFD	AREA FLOOR DRAIN
⊞	EXH	EXHAUST DUCT
⊞	SUP	SUPPLY DUCT
⊞	IWL	INTERCONNECTED WATER LINE
△	AIR	COMPRESSED AIR (LAUNDRY ONLY)

ISSUE	DATE	DESCRIPTION

PROJECT NUMBER: CM170123  
 SCALE: 1/4"=1'-0"  
 DRAWN: TCG  
 DATE: 06/05/2020

SHEET DESCRIPTION:  
**FOODSERVICE MECHANICAL SPOT CONNECTIONS PLAN**

SHEET NUMBER

# FS-1M